



食品餐饮设备行业 产品目录

FOODSERVICE
CONDENSED
CATALOG





The Alliance For Water Efficiency is a national nonprofit organization that advocates for water efficiency and conservation among its diverse membership.

节水委员会同盟是一个致力于节水和节能的国家级非盈利组织。

T&S is a member of the U.S. Green Building Council (USGBC), an independent accrediting body that has developed a rating system, the Leadership in Energy and Environmental Design (LEED®) to measure energy efficiency and sustainable building practices.

美国绿色建筑协会是一个已形成评估体系的独立评审机构。作为能源和环境设计 (LEED®) 的领导者，美国绿色建筑协会测评能源效率以及建筑的可持续性。T&S是美国绿色建筑协会的会员。

As a WaterSense Partner we signed an agreement with the U.S. Environmental Protection Agency (EPA) to show our commitment to promote its goals for national water efficiency.

作为节水环保协会合作伙伴，我们已与美国国家环保局签订了协议，以表示我们为促进节水环保的决心。

Company History 公司历史

With a steadfast commitment to quality, T&S Brass has set industry standards for more than 70 years and introduced a number of plumbing innovations, including the market's first pre-rinse unit and the foot pedal valve.

Today, T&S manufactures and sells faucets, fittings, and specialty products and accessories for foodservice, industrial, commercial plumbing, and laboratory markets. Its products have become the standard for the majority of U.S. hospitals, schools, restaurants, prisons, and public facilities.

At our headquarters in Travelers Rest, SC, our associates take pride in consistently delivering the finest in craftsmanship and service. We produce more than 5,000 quality products and parts.

T&S sells meticulously designed and rigorously built products on nearly every continent. Still family owned and operated, reliability remains the fundamental principal behind everything we do.

每一件T&S产品都展现行业的最高水准，这是T&S公司恒久不变的企业精神。在这一精神的指引下，T&S精益求精的制造工艺，打造出设计和性能完美结合。最先在市场上推出预冲洗花洒装置和脚踏阀等产品。

T&S公司制造和销售各种水龙头、零配件、专业产品，并提供给食品饮料设备行业、商用建筑、工业建筑、医疗和实验机构等领域。

在Traveler Rest, T&S 美国总部，我们以坚持提供最好的产品和快速服务而自豪。T&S公司生产有超过5000种和零配件来满足所有客户的需求。

T&S公司不仅在美国商用五金行业担当重要角色，而且在近20年中将业务伸向全球，加拿大、澳大利亚、日本、欧洲、南美等区域和国家。T&S公司坚信：客户的信任和支持是对T&S事业的基石，是前进的动力。T&S将继续提升产品质量、建立卓越的声誉，继续保持业界的领先地位！



T&S leadership in conservation T&S公司节水环保的领导者

For decades, T&S has been a leader in water conservation. Our B-0107 and B-0108 pre-rinse units meet or exceed all U.S. government requirements for water conservation. This water-conscious emphasis not only protects our valuable natural resources, it also saves our customers large amounts of money as well — in water costs, in sewer costs, and in energy costs for water heating.

Trust T&S to continue to lead equipment suppliers in water and energy conservation efforts. For more information on T&S water conservation, visit www.tsbrass.com and check out Water Conservation Resources on the home page.

数十年来，T&S产品一直保持着节水环保产品的领先地位。B-0107和B-0108预冲洗花洒装置都满足或超过美国政府对保护水资源的立法要求。节水环保不仅仅保护我们的宝贵自然资源，更是帮助我们客户节约成本-减少水费用，污水处理费用和加热水需要的能源费用等。

要获取更多有关T&S产品节能环保的信息，请登录www.tsbrass.com，进入水资源保护主页。

What is LEED?

LEED certification is a third-party validation of a building's green performance, and it demonstrates that building green can provide benefits without higher costs. LEED credits are awarded based on criteria in five categories of performance. Architects and building planners apply for this certification, and a building project must meet prerequisites to be registered. A project must also achieve the minimum number of points to earn a basic "Certified" level of LEED certification. The number of points the project earns determines the level of LEED certification (Certified, Silver, Gold or Platinum).

With LEED 2009, several changes have been implemented to make the certification even better. Some of these developments address the increasing environmental concern for conserving freshwater.

Because T&S is a market leader in creating products that drastically cut water usage, we're able to provide you with more point-earning power under the new LEED system. Though LEED doesn't certify products, T&S can contribute to LEED certification in three specific categories: Water Efficiency, Innovation and Design and Regional Priority.

LEED是什么？

LEED属于针对建筑物绿色性能的第三方认证，以表明绿色建筑具有多种优势，且不会产生高昂的成本。LEED认证由五大方面的若干指标构成。由建筑师和建筑规划师提出认证申请，并且建筑项目应满足登记注册的先决条件。每个项目的得分至少达到LEED规定的“认证”级别。项目的得分决定LEED的认证级别（认证级、银级、金级、铂金级）。

自2009年设立以来，LEED认证历经数次变更之后，已日趋完善。某些改进主要体现在对淡水资源的关注。

作为致力于生产高效节水产品的市场领导者，T&S能够在新LEED体系下，进一步提升您的得分能力。尽管LEED认证不针对任何产品，T&S仍将会尝试在节水效率、创新以及设计和地域优先性方面获得LEED认证。



Clear reasons to choose T&S

为何选择T&S 产品?



Quick Ship 快速运输

Fast delivery service, global supply.
快速发货服务, 全球供货。

Conveniently Located Warehouses 仓库地理位置优越

Get better, faster service. T&S has warehouses strategically located in Hong Kong and Shanghai.
更好更快的服务, T&S在上海和香港都有保税仓库。

Interchangeability 互换性

Change out components easily, carry less inventory and enjoy the flexibility our products offer.
方便快捷地更换产品各组件, 减少库存及享受我们产品的灵活性。

Quality and Innovation 品质和创新

You can see and feel the difference T&S's products deliver. Our products are designed to meet your evolving application needs, be extremely durable, and cut installation time.
我们的产品与众不同, 可以满足客户的多种需要, 非常耐用, 节约您的安装时间。

Outstanding Customer Service 专业的客户服务

Call and speak with an expert. Our highly trained, friendly staff answers your calls without delay, 9:00 a.m. EST to 5:00 p.m. PST.
严格训练的客服人员会及时接听您的电话, 早上9:00到下午5:00。

Extensive Product Line 扩展的产品线

No matter your industry or application, our extensive range of products and services can meet your needs.
无论您的产品需要什么, 我们丰富的产品线都能满足您的需求。

Rigorous Testing 严格测试

Stop worrying about product performance. We test every single product we manufacture.
不用对我们产品性能而担忧, T&S每个产品出厂前都严格经过质量测试。

Family-Owned and Operated 关于我们

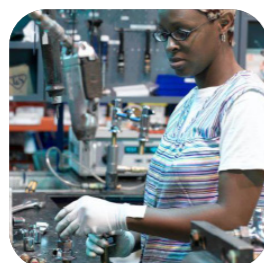
Pride and professionalism mean a lot to you, and to us. Family-owned T&S has been a leader in reliable, innovative products and services since 1947.
T&S公司从1947年起, 一直引领食品餐饮设备行业的行业标准。

Custom Engineering and Modifications 定制及更改

Let our experienced engineers help you satisfy specific requirements quickly.
经验丰富的工程师可以快速地满足你们提出的特殊产品改装要求。

Codes and Compliances 规范及法规

Trust T&S for products that are manufactured to highest industry standards and certified by nationally and internationally recognized organizations (ISO, UL, CSA, NSF, IAPMO, ASSE, and more).
T&S产品都是严格按照美国国家及国际组织的认证 (ISO, UL, CSA, NSF, IAPMO, ASSE 及其它) 来生产的。



Content

目录

T&S Standard Products 天仕标准系列



- Pre-Rinse Units 预冲洗花洒装置系列 1~3
- Mini Pre-Rinse Units 迷你花洒系列 4
- Accessories of Pre-Rinse Units 预冲洗花洒装置零配件 5
- Workboard and Pantry Faucets 工作台龙头和厨房龙头 6~12
- Cartridge Assemblies 阀芯配件 13
- Cartridge Accessories 零配件 14
- Electronic Sensor Faucets 电子感应龙头 15~17
- Single Lever Faucets and Metering Faucets 单柄龙头/计量龙头 18
- Single Sink Faucets and Service Sink Faucets 单星盆龙头/拖把池龙头 19
- Spouts and Pedal Valves 水嘴/脚踏阀 20
- Glass Fillers and Dipperwells 推杯龙头/流水井系列 21
- Waste Valves and Big-Flo Faucets 排水阀/大流量龙头 22
- Pot and Kettle Fillers 汤锅注水龙头 23
- Hose Reel Systems 洗地龙头系统 24~26
- Hose Reels 洗地龙头 27~28
- Pre-Rinse Unit Water Conservation Calculator 花洒节水计算表 29

Emergency Eyewash Unit by Haws Haws 紧急洗眼装置



- Eyewash Units 洗眼器 30~31

Equip Series Equip经济款系列龙头



- Pre-Rinse Units Series and Accessories 预冲洗花洒装置与配件 33~34
- Pantry Faucet and Accessories 厨房龙头 35~41
- Accessories 零配件 42
- Glass Fillers 推杯龙头 43
- Hose Reel Systems 洗地龙头系统 44
- Hose Reels 洗地龙头 45
- CQC节水认证产品清单 46

- INDEX 搜索型号 47~48



Product Update

产品更新



B-0107 Spray Valve/B-0107喷阀

Changes 改变

- The flow rate of B-0107 spray valve was modified from 1.42 GPM (5.4 LPM) to 1.15 GPM (4.35 LPM). Production will begin using the new flow rate on October 1, 2018
- 从2018年10月1日开始, B-0107喷阀流量从原先的1.42GPM (5.4LPM)改为1.15GPM (4.35LPM)



B-0107-J Series Spray Valve/B-0107-J系列喷阀

Changes 改变

- Reduced the bumper length from 2-5/8" (67 mm) to 1-5/8" (41 mm) to make it easier to clean around the spray tip
- Improved bumper markings so they are easier to read
- Added Metric measurements to bumper (Liters per Minute and BAR)
- The changes were implemented for the following series:
 - B-0107-J
 - B-0107-C
 - EB-0107-J
 - EB-0107-C



- 缓冲垫的长度由67mm升级为41mm, 使喷头更方便清洗
- 改善缓冲垫上的标识, 更便于阅读
- 缓冲垫上增加其他度量单位(升每分钟和巴)
- 升级产品包括:
 - B-0107-J
 - B-0107-C
 - EB-0107-J
 - EB-0107-C

※ Warranty: T&S line: 2 years. T&S PRU: 3 years. Other lines: 1 years.
 保修: T&S系列: 2年保修期; T&S预冲洗花洒装置: 3年; 其他系列: 1年

T&S Antimicrobial Handles 抗菌手柄

Providing an antimicrobial barrier to prevent the spread of disease and the risk of cross-contamination

提供抗菌屏障, 防止疾病传播和交叉污染的风险



Wrist-Action 腕式手柄
 B-WH4-NS-AM
 B-WH4-K-NS-AM
 B-WH4C-NS-AM (Cold冷)
 B-WH4H-NS-AM (Hot热)



Four-Arm 十字手柄
 002521-45NS-AM
 B-18KNS-AM
 B-19KNS-AM
 175FCNS-AM (Cold冷)
 175FHNS-AM (Hot热)



Lever 一字手柄
 001638-45NS-AM
 B-9K-NS-AM
 001636-45NS-AM (Cold冷)
 001637-45NS-AM (Hot热)

Bacteria Test

细菌测试

Specimen 样本	Contact Time 接触时间	Number of Microorganisms Recovered (of 788,000 Organisms) 恢复的微生物数(788,000个生物)
Untreated Coated Metal 未经处理的镀层金属	24h	19,100,000
Antimicrobial Coated Metal 抗菌镀层金属	24h	<50

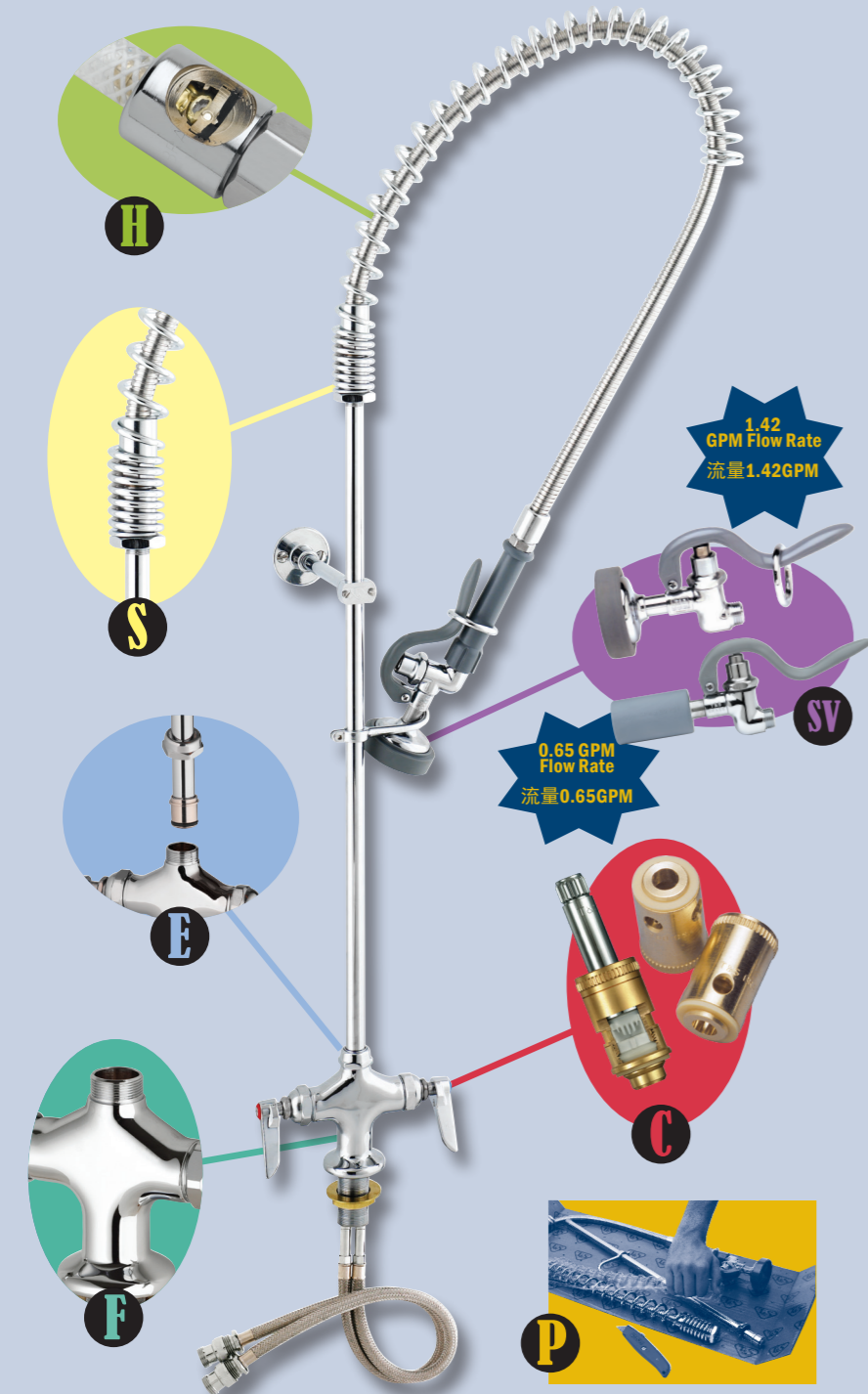
Fungal Test

真菌测试

Specimen 样本	Contact Time 接触时间	Fungal Growth 真菌是否生长
Untreated Coated Metal 未经处理的镀层金属	28 Days	Yes 是
Antimicrobial Coated Metal 抗菌镀层金属	28 Days	No 否



The Superior Features of a
T&S **EasyInstall** Rinse Unit
T&S快速安装预冲洗花洒装置的优良特性



EasyInstall



- C** CARTRIDGES
- Interchangeable
 - Self-contained and easily replaced
 - Ceramic and compression
- 阀芯
- 灵活更换
 - 自动调节和易替换性
 - 耐磨损陶瓷或压缩阀芯
- E** EASYINSTALL
- Patented design
 - Unique "pop-and-lock" riser connection that takes as little as 10 minutes to install
- 快速安装
- T&S专利设计
 - 独特的“快插、锁紧”设计使得安装仅需10分钟
- F** FAUCETS
- Forged one-piece base faucet eliminates leaks
 - Copper layer over casting makes smoother surface
 - Thick chrome plating
- 龙头
- 龙头底部一体化, 有效排除渗漏可能
 - 镀铜工艺使表面更光滑
 - 加厚镀铬层
- H** HOSES
- Stainless steel hoses with double interlocked covers for long life
 - Sealed ends prevent tears
 - Vinyl nylon reinforced inner hose tested to 1200 PSI
- 软管
- 不锈钢双扣软管
 - 端口防撕裂密封设计
 - 内壁有聚乙烯编织, 每平方英尺能承受1200磅的压力
- P** PACKAGING
- Pre-assembled parts are ready for quick installation
 - Fewer parts to misplace
- 包装
- 预先组装部分组件, 为安装节省更多时间
 - 降低安装失误可能
- S** SPRING
- Specially designed spring reinforced at the stress point where hose connects
 - Protects and extends life of hose
- 弹簧
- 独特的设计, 在软管受力点进行了加固
 - 保护软管, 延长软管寿命
- SV** SPRAY VALVES
- Significant water-savings with low-flow rates
 - Uncompromising performance
 - Tested to over 1 million cycles
- 喷阀
- 低流量对节水有着重大意义
 - 一如既往的优质品质

B-0113-B
EasyInstall Pre-Rinse Unit
快速安装预冲洗花洒装置

- Deck-mounted single hole base faucet with "pop-and-lock" riser installation feature
- B-0107 spray valve (1.15 GPM/4.35 LPM)
- B-0044-H2A flexible stainless steel hose
- B-0109-01 6" (152 mm) wall bracket
- 18" (457 mm) flexible inlets
- Deck mounting hole I.D.: 38mm
- Production location: China

- 台式单孔的水龙头底座, “快插、锁紧”安装特点
- B-0107喷阀1.15GPM(4.35LPM)
- B-0044-H2A不锈钢双扣软管
- B-0109-01 6"(152 mm)墙上托架
- 18"(457 mm)进水口软管
- 台面安装孔直径:38mm
- 产地: 中国



B-0113-ADF12-B
EasyInstall Pre-Rinse Unit
快速安装预冲洗花洒装置

- B-0107 spray valve (1.15 GPM/4.35 LPM)
- With 12" (305 mm) add-on faucet and wall bracket
- Production location: China

- B-0107喷阀1.15GPM(4.35LPM)
- 花洒龙头配置12"(305mm)附加龙头
- 产地: 中国



B-0113-ADF12-B
EasyInstall Pre-Rinse Unit
快速安装预冲洗花洒装置

EasyInstall

B-0113-12-CR8SP
Pull-Down Pre-Rinse Unit
拉伸式预冲洗花洒装置

- Single hole deck-mounted faucet
- 1.07 GPM (4.05 LPM) sprayer
- Stainless steel pull-down activated valve unit w/ insulate grip handle blue sprayer
- Deck mounting holes I.D.: 38mm
- Production location: United States

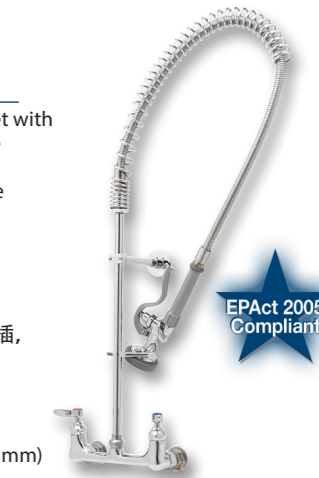
- 单孔台式底座
- 1.07GPM(4.05LPM)喷阀
- 不锈钢拉伸式喷阀装置蓝色喷阀带隔热手柄
- 台面安装孔直径:38mm
- 产地: 美国



B-0133-B
EasyInstall Pre-Rinse Unit
快速安装预冲洗花洒装置

- 8" (203 mm) center wall-mounted faucet with "pop-and-lock" riser installation feature
- B-0107 spray valve (1.15 GPM/4.35 LPM)
- B-0044-H2A flexible stainless steel hose
- B-0109-01 6" (152 mm) wall bracket
- Wall mounting holes I.D.: 25mm X 2, 8"(203mm) center
- Production location: China

- 间距为8"(203mm)长的墙式底座, “快插、锁紧”安装特点
- B-0107喷阀1.15GPM(4.35LPM)
- B-0044-H2A不锈钢双扣软管
- B-0109-01 6"(152 mm)墙上托架
- 墙面安装孔直径:25mm X 2, 孔距8"(203mm)
- 产地: 中国



B-0133-ADF12-B
EasyInstall Pre-Rinse Unit
快速安装预冲洗花洒装置

- Same as B-0133-B except with 12" (305 mm) add-on faucet
- B-0107 spray valve (1.15 GPM/4.35 LPM)
- Production location: China

- 与B-0133-B相同, 除配置了12"(305 mm)附加龙头
- B-0107喷阀1.15GPM(4.35LPM)
- 产地: 中国



Pre-Rinse Units and Accessories 预冲洗花洒装置及配件

B-0121 Pre-Rinse Unit 预冲洗花洒装置

- 8" (203 mm) deck mount mixing faucet
- 12-1/16" (306 mm) overhead swivel arm
- Eterna cartridges with spring checks
- Lever Handles
- B-0107 Spray Valve (1.15 GPM/4.35 LPM)
- 1/2" NPT Female Inlets
- Deck mounting holes I.D.: 25mmX2, 8" (203 mm) center
- Production location: United States



EPAAct 2005
Compliant

- 8"(203mm)间距台出混水龙头
- 12-1/16"(306mm)高架摆臂
- 带弹簧止回阀的Eterna压缩滤芯
- 一字型手柄
- B-0107 喷阀 1.15 GPM (4.35LPM)
- 1/2"NPT 内螺纹进水口
- 台面安装孔直径: 25mmX2, 孔距8" (203mm)
- 产地: 美国

B-0123-B Pre-Rinse Unit 预冲洗花洒装置

- 8"(203 mm) center deck faucet with "Pop and Lock" rise installation feature
- 41-13/16" (1062 mm) high
- B-0107 spray valve (1.15 GPM/4.35 LPM)
- B-0109-01 6" (152 mm) wall bracket
- B-0044-H2A flexible stainless steel hose
- Deck mounting holes I.D.: 25mmX2, 8" (203mm) center
- Production location: China



EPAAct 2005
Compliant

- 双孔台出, 8" (203mm)间距龙头底座, 快速安装
- 1062mm高度
- 配置B-0107花洒喷阀1.15GPM (4.35LPM)
- B-0109-01 6" (152mm)墙上支架
- 配置B-0044-H2A不锈钢软管
- 台面安装孔直径: 25mmX2, 孔距8" (203mm)
- 产地: 中国

B-2285-B Pre-Rinse Unit 预冲洗花洒装置

- Single hole base faucet
- 42-1/2" (1080 mm) high
- 1/2" male NPSM threaded inlet
- 24"(610 mm) riser model (000375-40)
- B-0107 spray valve (1.15 GPM/4.35 LPM)
- B-0044-H2A flexible stainless steel hose
- Deck mounting hole I.D.: 25mm
- Production location: United States



EPAAct 2005
Compliant

- 单孔底座
- 高42-1/2"(1080mm)
- 1/2"NPSM外螺纹进水口
- 直管高24"(610mm)
- B-0107喷阀1.15 GPM (4.35LPM)
- B-0044-H2A不锈钢软管
- 台面安装孔直径: 25mm
- 产地: 美国

B-2338 Pre-Rinse Unit 预冲洗花洒装置

- Single hole base faucet with 1/2" NPSM male inlets
- 40-1/4" (1023 mm) high
- 18" (457 mm) riser model (000369-40)
- B-0107 spray valve (1.15 GPM/4.35 LPM)
- B-0044-H2A flexible stainless steel hose
- Add on faucet with 12" (305 mm) nozzle
- Deck mounting hole I.D.: 38mm
- Production location: China



EPAAct 2005
Compliant

- 单孔底座带有1/2"NPSM外螺纹进水口
- 高度40-1/4"(1023mm)
- 18"(457mm)高的直管
- B-0107喷阀1.15 GPM (4.35LPM)
- B-0044-H2A不锈钢软管
- 12"(305mm)附加龙头
- 台面安装孔直径: 38mm
- 产地: 中国

B-0156 Add-On Faucet For Pre-Rinse Units 为预冲洗花洒装置设计的Add-On龙头

- 12" (305 mm) swing nozzle with aerator
- Includes 3" (76 mm) nipple for installation on existing base faucets (000358-40)
- Production location: China



Note: the B-0156 increases the height of a pre-rinse unit by approximately 4-1/2" (114 mm).

备注: B-0156会增加预冲洗花洒装置的高度, 增加大约 4-1/2"(114 mm)

- B-0155 same as B-0156 except with 6" (152mm) nozzle (059X)
B-0155 与 B-0156 相同, 除了采用长度为6" (152mm)水嘴(059X)
- B-0155-LN add-on faucet less nozzle
B-0155-LN附加龙头无水嘴
- B-0157 same as B-0156 except with 18" (457mm) nozzle (065X)
B-0157 与 B-0156相同, 除采用长度为18"(457mm)的水嘴(065X)
- B-0158 add-on faucet with 14" (356mm) nozzle (063X)
B-0158 带14"(356mm)水嘴的附加龙头(063X)

B-0044-H2A Flexible Stainless Steel Hose, less handle 不锈钢双扣软管 (不含手柄)

- 38 5/8"(981mm) long, less handle
- Inner Polyurethane Hose
- Production location: China



- 38 5/8"(981mm)长, 无手柄
- 聚氨酯内管
- 产地: 中国

- B-0020-H 20" flexible stainless steel hose
B-0020-H 20" 不锈钢软管
- B-0020-H2A 14 3/8" flexible stainless steel hose, less handle
B-0020-H2A 14 3/8" 不锈钢软管, 无手柄
- B-0044-H 44" flexible stainless steel hose
B-0044-H 44" 不锈钢软管
- B-0060-H 60" flexible stainless steel hose
B-0060-H 60" 不锈钢软管

Mini Pre-Rinse Line 迷你预冲洗花洒装置

The T&S Pre-Rinse Solution For Limited Kitchen Space

Leading the way in innovation, we are pleased to introduce our new line of T&S Mini Pre-Rinse Units, designed to fit in compact kitchens and in tight spaces.

All T&S Mini Pre-Rinse Units include many of the same high-quality components and features you already find with our standard-sized pre-rinse:

- EasyInstall design saves significant installation time
- B-0109-01 6" Wall Bracket for added stability
- Add-On Faucet with Swivel Nozzle for pot and kettle filling convenience
- Water-conserving Spray Valves
- Wall or deck mount Base Faucet with your choice of Ceramic or Compression Cartridges
- Compact Spring with Flexible Stainless Steel Hose and Finger Hook

T&S花洒装置为有限的厨房空间提供解决方案

T&S一直领先创新之路, 我们乐于为您介绍T&S为适应空间紧凑的厨房设计的新产品, 迷你型预冲洗花洒装置。



所有的T&S 迷你预冲洗花洒装置包含了许多被熟知的标准型花洒喷枪的特点:

- 快速安装设计有效节省了安装时间
- B-0109-01 为稳固而设计的6"墙上支架
- 清洗方便而的附加摇摆龙头
- 节水喷阀
- 可以任选的金属陶瓷滤芯或压缩滤芯、搭配墙出或台出龙头底座
- 加固弹簧、不锈钢软管、喷阀挂钩

Examples of Available Models

MPY-2DLN-06 – Single deck mount base faucet, add-on faucet, 6" swing nozzle, compact spring and hose with B-0107-C spray valve, 6" wall bracket, club handles, Production location: China

MPZ-2DLN-08 – Single deck mount base faucet, add-on faucet, 8" swing nozzle, compact spring and hose, B-0107 spray valve, 6" wall bracket, lever handles, Production location: China

可选择型号:

迷你花洒总高度: 610 mm~635 mm 开孔直径: 38mm

• MPY-2DLN-06—单孔台出龙头底座, 附加龙头, 6"(152mm)摇摆水嘴, 加固弹簧和不锈钢管, B-0107-C喷阀, 6"(152mm)墙上支架一字型手柄, 产地: 中国

• MPZ-2DLN-08—单孔台出龙头底座, 附加龙头, 8"(203mm) 摇摆水嘴, 加固弹簧及软管, B-0107喷阀(1.15 GPM), 6"(152mm)墙上支架, 一字型手柄, 产地: 中国



MPY-2DLN-06



MPZ-2DLN-08

迷你预冲洗花洒装置-组装您所需的迷你花洒

Base Faucets 龙头底座	Add-On Faucets Nozzles 附加龙头	Faucet Handles 龙头手柄
B-0113 style single hole base faucet 单孔龙头底座	B-0123 deck-mount with 8" centers base faucet 8"台出龙头底座	B-0133 style wall-mount with 8" centers base faucet 8"墙出龙头底座
6" Swing Nozzle 6"摆动式水嘴	8" Swing Nozzle 8"摆动式水嘴	Lever Handle 一字型手柄
NEW B-0107-J	B-0107	4" Wrist-Action Handle 腕式手柄
B-0107-C35	B-0107-035	Club Handle 棒球式手柄
B-0107-C	B-0107-C35	B-0907-FEZ 真空调节器

MP

Spray Valve 喷阀
Z B-0107
Y B-0107-C
X B-0107-035
W B-0107-C35
L B-0107-J35
J B-0107-J

PRU Body 花洒喷阀装配本体
2D Single Hole Base
单孔底座 (B-0113 style)
8D Deck mount with 8" centers
8"间距台出 (B-0123 style)
8W Wall Mount with 8" centers
8"间距墙出 (B-0133 style)

Handle 手柄
L Lever
一字型
W 4" Wrist Action
4"腕式
C Club (decorative)
棒球式 (装饰性的)

Vacuum Breaker 真空调节器
V Atmospheric
Vacuum Breaker
(B-0970-FEZ)
大气真空调节器
N No Vacuum
Breaker
无真空调节器

Add-On Faucet Nozzle 附加龙头水嘴
06 6" Swing Nozzle
6"摆动式水嘴
08 8" Swing Nozzle
8"摆动式水嘴

Ceramic Cartridge 金属陶瓷滤芯
CR Ceramic cartridge
Note: The compression cartridge is the default cartridge installed in the Mini Pre-Rinse Unit
注: 压缩滤芯可以安装在迷你花洒上

MPZ-4DLN-06 available. 也有MPZ-4DLN-06供选择

Pre-Rinse Units Accessories 预冲洗花洒装置配件

B-0107 Standard Spray Valve 标准喷阀

- Connects directly to flexible stainless steel hose or handle assembly
- 1.15 GPM (4.35 LPM)
- Designed for heavy use in commercial kitchens
- Shuts off when handle is released
- Production location: China

- 直接跟不锈钢双扣软管或手柄连接装配
- 1.15 GPM (4.35 LPM)
- 为商业厨房而设计
- 松开把手就自动关闭
- 产地: 中国

EPAAct 2005
Compliant



B-0107-C Low Flow Spray Valve 低流量喷阀

- Connects directly to flexible stainless steel hose or handle assembly
- Low flow 0.65 GPM (2.46 LPM)
- Designed for heavy use in commercial kitchens
- Production location: China

- 直接跟不锈钢双扣软管或手柄连接装配
- 低流量0.65 GPM(2.46LPM)
- 为商业厨房而设计
- 产地: 中国

EPAAct 2005
Compliant



B-0107-J same as B-0107-C except with 1.07 GPM (4.05 LPM) flow rate
与 B-0107-C 相同, 除了流量为 1.07 GPM (4.05 LPM)

B-0109-01 Wall Bracket 墙装支架

- 6" (152 mm) wall bracket (-B models)
- Fits 3/8" pre-rinse risers
- Adjustable length by field cutting unthreaded end of pipe
- 9"(229 mm), 12"(305 mm), 18"(457 mm), 24"(610 mm) available
- Production location: China

- 6"墙装支架(后缀为-B的花洒型号自带6"墙装支架)
- 适用于管径为3/8"的预冲洗花洒直管
- 可通过切除管子无螺纹的一端来调节支架长度
- 9"(229mm), 12"(305mm), 18"(457mm), 24"(610mm) 支架均有售
- 产地: 中国



002711-40NS Eterna Cartridge with Lever Handle Eterna压缩阀芯带一字手柄

- Quarter-Turn Eterna cartridge
- LTC with spring check
- Blue Index (cold water)
- Screw & new style bonnet
- Production location: China

- 90° 旋转Eterna压缩阀芯
- 左旋, 带有弹簧止回阀
- 蓝色指示片 (冷水)
- 使用螺丝及新款阀帽
- 产地: 中国



002712-40NS Eterna Cartridge with Lever Handle Eterna压缩阀芯带一字手柄

- RTC with spring check
- Red Index (hot water)
- Production location: China

- 右旋, 带有弹簧止回阀
- 红色指示片 (热水)
- 产地: 中国



002987-40 Grip Handle 花洒手柄

- A connection between spray valve and hose
- Two washers in both two sides
- Production location: China

- 连接于喷阀和软管之间
- 两头分别各有一个垫片
- 产地: 中国



EPAAct 2005
Compliant

000888-45 EasyInstall Overhead Spring 快速安装高架弹簧

- Specially designed spring reinforced at the stress point where hose connects
- Production location: China

- 独特的弹簧设计, 加固了软管接触点
- 产地: 中国



B-10K B-0107 Spray Valve Repair Kit 花洒喷阀配件包

- Repairs B-0107 spray valves
- 2(000895-45) Spring
- 2(000974-45) Bonnet washer
- 2(010476-45) Hose washer
- 2(001100-45) Packing stem
- 2(009306-20) Valve stem
- 2(001014-45) Bonnet binding washer
- 2(012915-45) Seat washer
- 1(007861-45) Spray head ring
- 1(000913-45) Spray face screw
- 1(001121-45) Spray face
- Production location: China

- 包含以下配件:
- 2个 000895-45 小弹簧
- 2个 000974-45 阀帽密封圈
- 2个 010476-45 不锈钢软管密封圈
- 2个 001100-45 螺母密封圈
- 2个 009306-20 喷阀底座密封圈
- 2个 001014-45 阀帽紧固密封圈
- 2个 012915-45 底座垫圈
- 1个 007861-45 喷阀面箍
- 1个 000913-45 喷阀面螺丝
- 1个 001121-45 喷阀面
- 产地: 中国



018200-40 Swivel for PRU 花洒旋转件

- Swivel allows 360° rotation and motion
- Both for T&S standard series and Equip series
- Production location: China

- 可旋转360°
- T&S标准款和Equip系列通用
- 产地: 中国



B-TEE-RGD Accessory Tee Assembly 花洒三通

- Recommended installation is just below spring body on pre-rinse riser
- Provides additional water source for accessory applications such as chemical injectors (for cleaning jobs, etc.)
- Production location: United States

- 推荐安装在预冲洗花洒弹簧下面的直管上
- 可根据需求外加额外的水资源, 如化学喷剂(用于清洁工作等)
- 产地: 美国



Workboard and Pantry Faucets 工作台龙头及厨房龙头

B-1110 Deck-Mounted Workboard Faucet 台式工作台龙头

- 6" (152 mm) swing nozzle and 4" (102 mm) centers, 1/2" NPT thread
- Chrome plated escutcheon
- Deck mounting hole I.D.: 25mmX2, 4" (102 mm) center
- Production location: China

- 6" (152 mm) 摆动式水嘴, 间距4" (102mm), 1/2"NPT螺纹
- 镀铬面板
- 台面安装孔直径: 25mmX2, 孔距4"(102mm)
- 产地: 中国



B-0207 Deck-Mounted Single Pantry Faucet 台式单柄厨房龙头

- 6" (152 mm) swing nozzle
- Lever handle
- 1/2" NPSM male shank
- 1/4" NPT union type tailpiece
- Deck mounting hole I.D.: 25mm
- Production location: United States

- 6" (152 mm) 摆动式水嘴
- 1/2"NPSM外螺纹
- 尾部采用1/4"NPT接头
- 台面安装孔直径: 25mm
- 产地: 美国



B-1122 Deck-Mounted Workboard Faucet 台式工作台龙头

- 10" (254 mm) swing nozzle and 8" (203 mm) centers, 1/2" NPT thread
- Chrome plated escutcheon
- Deck mounting holes I.D.: 25mmX2, 8"(203mm) center
- Production location: China

- 10" (254 mm) 摆动式水嘴, 间距为 8" (203mm), 1/2" NPT螺纹
- 镀铬面板
- 台面安装孔直径: 25mm x 2, 孔距8"(203mm)
- 产地: 中国



B-0211 Wall-Mounted Single Pantry Faucet 墙式单柄厨房龙头

- 12" (305 mm) swing nozzle, four arm handle
- 1/2" NPT female flanged inlet
- Wall mounting hole: 25 mm
- Production location: United States

- 12"(305 mm) 摆动式水嘴, 十字手柄
- 1/2"NPT内螺纹法兰进水口
- 墙面安装孔直径: 25mm
- 产地: 美国



B-0221 Deck-Mounted Mixing Faucet 台式混水龙头

- Double pantry faucet with 12" (305 mm) swing nozzle
- 8" (203 mm) centers, lever handles
- 1/2" NPT female eccentric flanged female inlets
- Deck mounting holes I.D.: 25mmX2, 8"(203mm) center
- Production location: China

- 双孔型厨房龙头, 带12"(305 mm)摆动式水嘴
- 间距为8"(203 mm), 一字型手柄
- 1/2" NPT偏心内螺纹的法兰进水接口
- 台面安装孔直径: 25mm x 2, 孔距8"(203mm)
- 产地: 中国



B-0300 Deck-Mounted Double Pantry Faucet 单孔台式混水厨房龙头

- Swivel gooseneck with 5-3/4" (145 mm) spread
- Lever handles
- Deck mounting hole I.D.: 38mm
- Production location: China

- 5-3/4" (145 mm) 的旋转式鹅颈
- 一字型手柄
- 台面安装孔直径: 38mm
- 产地: 中国



B-0320 Deck-Mounted Double Pantry Faucet 台式双孔厨房龙头

- Swivel gooseneck with 5-3/4" (145 mm) spread
- 8" (203 mm) centers
- Lever handles, 1/2" NPT female eccentric flanged inlets
- Deck mounting holes I.D.: 25mmX2, 8"(203mm) center
- Production location: China

- 展开为5-3/4"(145 mm)的旋转式鹅颈
- 8"(203 mm)长的间距
- 一字手柄, 1/2" NPT偏心内螺纹的法兰进水接口
- 台面安装孔直径: 25mm x 2, 孔距8"(203mm)
- 产地: 中国



B-0232-WH4 Wall-Mounted Mixing Faucet 墙式混水龙头

- Double pantry faucet with 6" (152 mm) swing nozzle
- 8" (203 mm) centers
- 4" (102 mm) wrist handles, 1/2" NPT female eccentric flanged inlets
- Wall mounting holes I.D.: 25mmX2, 8"(203mm) center
- Production location: China

- 6" (152 mm) 摇摆水嘴
- 8" (203 mm) 长的间距
- 4" (102 mm) 腕式手柄, 1/2" NPT偏心内螺纹的法兰进水接口
- 墙面安装孔直径: 25mm x 2, 孔距8"(203mm)
- 产地: 中国



B-0305 Deck-Mounted Single Pantry Faucet 台式单柄厨房龙头

- Swivel gooseneck with 5-3/4" (145 mm) spread
- 1/2" NPSM male shank, nut and tailpiece furnished for optional 1/4" NPT connection
- Deck mounting hole I.D.: 25mm
- Production location: United States

- 5-3/4" (145 mm) 的旋转式鹅颈
- 1/2"NPSM外螺纹连接杆, 螺母和配件可以选1/4" NPT接头
- 台面安装孔直径: 25mm
- 产地: 美国



Nozzle/Gooseneck/Spout 水嘴及鹅颈

Swing Nozzles

摆动式水嘴

- Nozzle tip has male threads with a stream regulator
- 带标准流量的外螺纹水嘴头



Model (型号)		Standard Sizes (标准尺寸)	
No.	Length (长度)	Clearance (出水口到台面距离)	
059X	6" (152mm)	2" (51mm)	
060X	8" (203mm)	2-9/16" (65mm)	
061X	10" (254mm)	3-5/16" (83mm)	
062X	12" (305mm)	3-15/16" (100mm)	
063X	14" (356mm)	4-5/8" (117mm)	
064X	16" (406mm)	5-7/16" (138mm)	
065X	18" (457mm)	5-15/16" (152mm)	

Swing Gooseneck

摆动式鹅颈

- Nozzle tip has male threads with a stream regulator
- 带标准流量的外螺纹水嘴头



Model (型号)		Standard Sizes (标准尺寸)	
No.	Spread (展开长度)	Height (高度)	Clearance (出水口到台面间距)
131X	2-15/16" (74mm)	4-3/4" (120mm)	2-3/16" (55mm)
132X	2-7/8" (73mm)	8-9/16" (217mm)	5-9/16" (141mm)
133X	5-3/4" (145mm)	10-5/16" (263mm)	5-15/16" (151mm)
134X	7-3/4" (197mm)	11-7/16" (290mm)	5-7/8" (149mm)
135x	8-3/4" (223mm)	12-1/16" (306mm)	5-7/8" (149mm)
136X	12-3/16" (310mm)	14-11/16" (373mm)	5-3/4" (147mm)

OCS6 Swivel Cast Spout

摇摆铸造水嘴

- polished chromium plated cast nozzle with aerator outlet
- 带起泡器出水口的抛光镀铬板面铸造水嘴



Model (型号)		Standard Sizes (标准尺寸)	
No.	Length (长度)	Height (高度)	Clearance (出水口到台面间距)
OCS6	6" (152 mm)	2-5/16" (59 mm)	11/16" (18 mm)
OCS8	8" (203 mm)	5-1/8" (130 mm)	3-1/2" (88 mm)

Double-Joint Nozzles

双层叠加式水嘴

- Nozzle tip has male threads with a stream regulator
- 带标准流量的外螺纹水嘴头



Model (型号)		Standard Sizes (标准尺寸)		
No.	Back (后长)	Front (前长)	Total (总长)	
066X	6" (152 mm)	6" (152 mm)	12" (305 mm)	
067X	9" (229 mm)	6" (152 mm)	15" (381 mm)	
068X	12" (305 mm)	6" (152 mm)	18" (457 mm)	
069X	12" (305 mm)	12" (305 mm)	24" (610 mm)	

Rigid Gooseneck

固定式鹅颈

- Nozzle tip has 3/8" NPSM outlet with a stream regulator
- 带标准流量的 3/8" NPSM 外螺纹水嘴头



Model (型号)		Standard Sizes (标准尺寸)		
No.	Spread (展开长度)	Height (高度)	Clearance (出水口到台面间距)	
119X	2-5/8" (67 mm)	8-3/4" (222 mm)	5-1/4" (133 mm)	
120X	5-1/2" (140 mm)	10-1/4" (261 mm)	5-1/4" (133 mm)	
122X	5-1/2" (140 mm)	11-1/2" (292 mm)	6-1/2" (165 mm)	
123X	5-1/2" (140 mm)	12-1/2" (318 mm)	7-1/2" (190 mm)	
125X	5-1/2" (140 mm)	14-1/2" (368 mm)	9-1/2" (241 mm)	
126X	5-1/2" (140 mm)	15-1/2" (394 mm)	10-1/2" (267 mm)	
127X	7-5/8" (194 mm)	11-1/2" (292 mm)	5-1/2" (140 mm)	
129X	8-1/2" (216 mm)	11-3/4" (298 mm)	5-7/16" (138 mm)	
130X	12-3/16" (310 mm)	13-3/8" (340 mm)	4-1/2" (114 mm)	
165X	4-1/16" (103 mm)	9-1/4" (236 mm)	5-13/16" (147 mm)	

Workboard and Pantry Faucets 工作台龙头及厨房龙头

任意搭配的龙头底座和水嘴
欲知产品详情, 请咨询天仕客服
水嘴升级中, 流量预计将会有变化
Nozzles are updating, and the flow rates are expected to be changed.



Nozzles 水嘴

Swing Nozzle
摆动式水嘴



Double-Joint Nozzle
双管叠加水嘴



Cast Nozzle
水嘴



Swivel Gooseneck
摇摆鹅颈管



059X 6" (152 mm)

060X 8" (203 mm)

061X 10" (254 mm)

062X 12" (305 mm)

065X 18" (457 mm)

066X 12" (305 mm)

067X 15" (381 mm)

068X 18" (457 mm)

OCS6 6" (152 mm)

133X
5-11/16" (145 mm)



B-0210-LN
Swivel Base Faucet
摇摆单孔龙头

- Wall mounted faucet
- Four-arm handles
- Wall mounting hole: 25mm
- 墙出龙头
- 可出热水或冷水
- 墙出开孔尺寸: 25mm

B-0212



B-0211

B-0210

B-0262

B-0260

B-0216

B-0312



B-0240-LN
Combination Sink Faucet
可调节式星盆龙头底座

- Wall mounted mixing faucet
- Lever handles
- 2-1/4" (57 mm) to 8-1/4" (210 mm) centers adjustable inlet arm
- 墙出混水龙头
- 一字型手柄
- 可调进水管中心距 2-1/4" (57 mm) 到 8-1/4" (210 mm)

B-0242



B-0241

B-0240



B-0243

B-0343

Workboard and Pantry Faucets 工作台龙头及厨房龙头

任意搭配龙头底座和水嘴
欲知产品详情，请咨询天仕客服
水嘴升级中，流量预计将会有变化
Nozzles are updating, and the flow rates are expected to be changed.

Nozzles 水嘴

Swing Nozzle 摆动式水嘴	059X 6" (152 mm)	B-0202	B-0207
	060X 8" (203 mm)		
	061X 10" (254 mm)		
	062X 12" (305 mm)	B-0201	B-0206
	065X 18" (457 mm)	B-0200	B-0205
Double-Joint Nozzle 双管叠加水嘴	066X 12"(305 mm)	B-0252	B-0257
	067X 15"(381 mm)	B-0251	
	068X 18"(457 mm)	B-0250	B-0255
Cast Nozzle 水嘴	0CS6 6"(152 mm)		B-0208
			
Swivel Gooseneck 摇摆鹅颈管	133X 5-3/4"(145 mm)	B-0300	B-0305
			



**B-0200-LN
Swivel Base Faucet
摇摆龙头**

- Double pantry faucet, deck-mounted
- Lever handles
- Deck mounting hole: 35mm
- 台出单孔冷热混水龙头
- 一字型手柄
- 台面安装孔径: 35mm

**B-0205-LN
Swivel Base Faucet
摇摆龙头**

- Single pantry faucet, deck-mounted
- Lever handle
- Deck mounting hole: 25mm
- 台出单孔, 可出热水或冷水
- 一字型手柄
- 台面安装孔径: 25mm

Workboard and Pantry Faucets 工作台龙头及厨房龙头

B-0220-LN Deck Mixing Faucet 台出混水龙头	B-0225-LN Deck Mixing Faucet 台出混水龙头	B-0230-LN Swivel Base Faucet 墙出摇摆龙头
<ul style="list-style-type: none"> • Deck mixing faucet • Lever handles • 8" (203 mm) centers • 台出双孔, 冷热混水龙头 • 一字型手柄 • 中心间距8" (203 mm) 	<ul style="list-style-type: none"> • Deck mixing faucet • Lever handles • 4" (102 mm) centers • 台出双孔, 冷热混水龙头 • 一字型手柄 • 中心间距4" (102 mm) 	<ul style="list-style-type: none"> • Wall mounted mixing faucet • Lever handles • 8" (203 mm) centers • 墙出双孔, 冷热混水龙头 • 一字型手柄 • 中心间距8" (203 mm)
B-0222	B-0228	B-0232
B-0220-060X	B-0227	
B-0220-061X	B-0226	B-2342
B-0221	B-0225	B-0231
B-0220		B-0230
B-0247		B-0267
B-0246		B-0266
B-0245		B-0265
	B-2501	
B-0320	B-0325	B-0331





Workboard and Pantry Faucets 工作台龙头及厨房龙头




Workboard and Pantry Faucets 工作台龙头及厨房龙头



任意搭配龙头底座和水嘴
欲知产品详情, 请咨询天仕客服
More information, ask Customer Service

以下水嘴流量均为2.2 GPM (8.3 LPM)
The flow rate of below nozzles are all 2.2 GPM
Nozzles 水嘴

	
B-1105-LN Workboard Faucet 工作台龙头	B-1100-LN Workboard Faucet 工作台龙头
<ul style="list-style-type: none"> • Wall mounted • Forged brass body • 6-1/2" (165 mm) long x 2" (51 mm) wide chrome plated escutcheon • 3-1/2" (89 mm) centers • 墙出 • 锻造龙头本体 • 6-1/2" (165 mm) 长 x 2" (51 mm) 宽镀铬孔罩 • 冷热进水管间距3-1/2" (89 mm) 	<ul style="list-style-type: none"> • Deck mounted • Forged brass body • 6-1/2" (165 mm) long x 2" (51 mm) wide chrome plated escutcheon • 3-1/2" (89 mm) centers • 台出 • 锻造龙头本体 • 6-1/2" (165 mm) 长 x 2" (51 mm) 宽镀铬孔罩 • 冷热进水管间距3-1/2" (89 mm)
Swing Nozzle 摆动式水嘴	
059X-A22 6" (152 mm)	B-1105
060X-A22 8" (203 mm)	B-1106
061X-A22 10" (254 mm)	B-1107
062X-A22 12" (305 mm)	B-1108
Double-Joint Nozzle 双管叠加水嘴	
068X-A22 18" (457 mm)	B-1135
Swivel Gooseneck 摇摆鹅颈管	
133X-A22 5-3/4" (145 mm)	B-1145

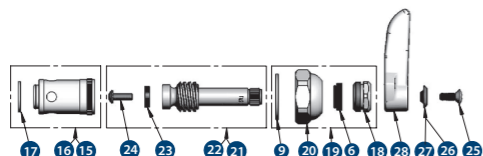
		
B-1110-LN Workboard Faucet 工作台龙头	B-1115-LN Workboard Faucet 工作台龙头	B-1120-LN Workboard Faucet 工作台龙头
<ul style="list-style-type: none"> • Deck mounted • Forged brass body • 6-1/2" (165 mm) long x 2" (51 mm) wide chrome plated escutcheon • 4" (102 mm) centers • 1" (25 mm) long shanks • 1/2" NPT thread • 台出 • 锻造黄铜龙头本体 • 6-1/2" (165 mm) 长 x 2" (51 mm) 宽的镀铬罩 • 4" (102 mm) 间距 	<ul style="list-style-type: none"> • Wall mounted • Forged brass body • 6-1/2" (165 mm) long x 2" (51 mm) wide chrome plated escutcheon • 4" (102 mm) centers • 1" (25 mm) long shanks • 1/2" NPT thread • 墙出 • 锻造黄铜龙头本体 • 6-1/2" (165 mm) 长 x 2" (51 mm) 宽的镀铬罩 • 4" (102 mm) 间距 	<ul style="list-style-type: none"> • Deck mounted • Forged brass body • 10-1/2" (267 mm) long x 2" (51 mm) wide chrome plated escutcheon • 8" (203 mm) centers • 1" (25 mm) long shanks • 1/2" NPT thread • 台出 • 锻造黄铜龙头本体 • 10-1/2" (267 mm) 长 x 2" (51 mm) 宽的镀铬罩 • 8" (203 mm) 间距
Swing Nozzle 摆动式水嘴		
059X-A22 6" (152 mm)	B-1110	B-1115
060X-A22 8" (203 mm)	B-1111	B-1116
061X-A22 10" (254 mm)	B-1112	B-1117
062X-A22 12" (305 mm)	B-1113	B-1118
Double-Joint Nozzle 双管叠加水嘴		
068X-A22 18" (457 mm)	B-1131	B-1136
Swivel Gooseneck 摇摆鹅颈管		
133X-A22 5-3/4" (145 mm)	B-1141	B-1146

以下水嘴流量均为2.2 GPM (8.3 LPM)
The flow rate of below nozzles are all 2.2 GPM
Nozzles 水嘴

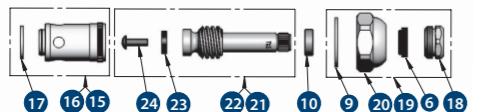
Cartridge Assemblies 阀芯组件

Eterna Cartridge Assemblies 压缩阀芯组件

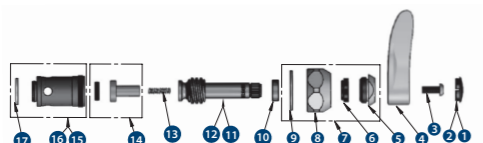
Old Style Eterna Cartridge
老款压缩阀芯
without Spring Check 无止回阀



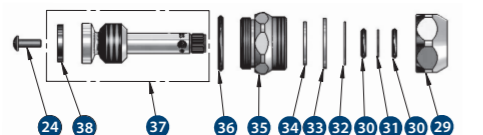
Quarter-Turn Eterna Cartridge
90°旋转压缩阀芯
without Spring Check 无止回阀



New Style Eterna Cartridge with Spring Checks
新款压缩阀芯带止回阀
Used on New Product ID Models
用于新产品型号



New Style Big-Flo Assembly
新款大流量组件



Eterna for Concealed Widespread Faucets
暗式大流量龙头阀芯



Cerama Cartridge Assemblies 陶瓷阀芯组件

Look for the CR suffix on our model numbers for Cerama cartridges 在型号后加CR后缀即可选购Cerama陶瓷阀芯

CERAMA (Old Style) Manual Faucets
without cross flow prevention

陶瓷阀芯 (老款)
手动龙头
不带止回阀

	OLD STYLE CARTRIDGES 老款阀芯	
Manual Faucets with CERAMA 带陶瓷阀芯的手动龙头	Quarter-Turn Cartridge 90°旋转阀芯	Quarter-Turn Cartridge with Lever Handle, Index and Screw 90°旋转阀芯, 配一字手柄、指示片和螺丝
CERAMA Quarter-Turn, Hot 90°旋转陶瓷阀芯, 热水	011278-25	012444-25
CERAMA Quarter-Turn, Cold 90°旋转陶瓷阀芯, 冷水	011279-25	012445-25

CERAMA (New Style) Manual Faucets and PRU
with cross flow prevention (-NS)

陶瓷阀芯 (新款)
手动龙头及预冲洗花洒装置
带有止回阀 (-NS)

	NEW STYLE CARTRIDGES (-NS) 新款阀芯 (-NS)	
Manual Faucets and PRU with Cross Flow Prevention CERAMA 手动龙头及预冲洗花洒, 陶瓷阀芯带止回阀	Quarter-Turn Cartridge with Check Valve 90°旋转阀芯带止回阀	Quarter-Turn Cartridge with Check Valve, Lever Handle, Index and Screw 90°旋转阀芯带止回阀、一字手柄和螺丝
CERAMA with Check Valve, Quarter-Turn, Hot 陶瓷阀芯带止回阀, 90°旋转, 热水	012394-25NS	012446-25NS
CERAMA with Check Valve, Quarter-Turn, Cold 陶瓷阀芯带止回阀, 90°旋转, 冷水	012395-25NS	012447-25NS

Accessories 零配件

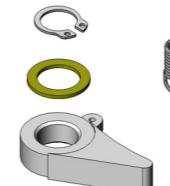
B-3999-OF Waste Drain Overflow Kit 排水阀溢流组件

- 1-1/4" (32 mm) overflow tube assembly outlet with head and elbow tube
- Material: Chrome plated brass
- Production location: China
- 1-1/4"(32mm)溢流出水口, 配有溢流头和弯管
- 材质: 镀铬黄铜
- 产地: 中国



014940-45 Ratchet Kit 棘轮组件包

- Ratchet assembly kit for B-7000 series hose reels
- Production location: China
- B-7000系列洗地龙头棘轮组件包
- 产地: 中国



014941-45 Hose kit 软管组件

- 35' (10.7 m) of 3/8" heavy duty non-marking hose
- 3/8" NPT inlet & outlet
- Fit T&S 3/8" hose reel
- Production location: China
- 3/8"x 35'(10.7m)重工型无痕软管
- 3/8"NPT进出水口
- 适用于所有T&S管径为3/8"的洗地龙头
- 产地: 中国



B-0230-K Elbow Kit 弯头组件包

- Two short elbows with 1/2" NPT male inlet and 1/2" NPT female outlet
- Two 1/2" NPT supply nipples with lock nuts and washers
- Fits all T&S B-Line wall mount sink faucets and PRUs
- Production location: China
- 2个短弯头, 1/2" NPT外螺纹进水口 x 1/2" NPT内螺纹出水口
- 2个1/2" NPT供水接头, 配螺母及垫片
- 适用于标准款墙出星盆龙头和墙出花洒
- 产地: 中国



B-0230-KIT Elbow Kit 弯头组件包

- Same as B-0230-K, except with two 24" (610 mm) flexible supply hose
- Production location: China
- 与B-0230-K相同, 除带2根24"(610mm)的弹性供水管
- 产地: 中国



B-1100-K Elbow Kit 弯头组件包

- 1/2" NPT male x female short elbow kit
- Installation kit for workboard wall-mount faucet
- Production location: China
- 1/2" NPT外螺纹x内螺纹短弯头组件包
- 墙出工作台龙头安装组件包
- 产地: 中国



EZ-K EasyInstall Kit 快装组件包

- EasyInstall kit converts rigid risers & nozzles for use with swivel outlet
- EasyInstall retro-fit kit
- (1) LocTie capsule
- (1) 3/8" hex key
- (1) lock washer
- (1) O-ring
- (1) EasyInstall nut
- (1) EasyInstall Bushing
- Production location: China



- 快装组件包, 用于将固定式直管或水嘴转换为旋转式
- 快装加装组件包
- 1包乐泰胶水
- 1把3/8"的六角扳手
- 1个锁紧垫圈
- 1个O型圈
- 1个快装螺母
- 1个快装衬套
- 产地: 中国

Lever Handle 一字手柄

- 001636-45NS Cold
- 001637-45NS Hot
- 001638-45NS Blank
- Order B-9K-NS parts kit (includes Hot and Cold)
- Production location: China



- 001636-45NS 冷水
- 001637-45NS 热水
- 001638-45NS 空白
- 订购B-9K-NS零件包 (包含冷热水)
- 产地: 中国

Four Arm Handle 十字手柄

- 002521-45NS Handle only
- 175FCNS Cold (include button and screw)
- 175FHNS Hot (includes button and screw)
- Order B-19KNS parts kit (includes Hot and Cold)



- 002521-45NS 只有手柄
- 175FCNS 冷水 (包含指示片和螺丝)
- 175FHNS 热水 (包含指示片和螺丝)
- 订购B-19KNS零件包 (包含冷热水)

4" (102 mm) Wrist-Action Handle 4" (102mm)腕式手柄

- B-WH4C-NS Cold
- B-WH4H-NS Hot
- B-WH4-NS Blank
- Production location: China



- B-WH4C-NS 冷水
- B-WH4H-NS 热水
- B-WH4-NS 空白
- 产地: 中国

Electronic Faucets 电子感应龙头

电子感应龙头——值得信赖的设计

Standard Features of Electronic Faucet

感应龙头标准特点

Standard Features

- Hands free washing greatly reduces risk of contamination
- Sensor-operated faucets conserve water
- Water-resistant circuit control module
- Each model comes with the convenience of electric plug-in (AC) and battery (DC) power options
- ADA-compliant
- Adjustable water shut-off delay
- Chrome plated brass
- Troubleshooting LED indicator lights
- Scratch-resistant sensor lens
- Filtered solenoid valve with serviceable strainer filter
- Modular quick-release sensor connections
- Low battery indicator light
- Pre-assembled with appropriate mounting hardware included
- Check valves for cross flow prevention in all models
- Requires on sealants for easy installation

标准特征

- 无接触冲洗, 大大降低交叉感染几率
- 电子感应控制, 节水环保
- 防水电路控制模块
- 具有交流电AC模块和直流电DC模块, 交流、直流两用
- ADA残疾人保护法推荐产品
- 可调节的关水延迟
- 镀铬黄铜
- LED故障指示灯
- 耐划伤传感器镜头
- 带过滤装置的电磁阀
- 模块化速动传感器连接
- 低电量指示灯
- 预先组装配件
- 所有型号都配置了防回流止回阀
- 仅密封剂即可简易安装



EC-HYDROGEN-LF Low Flow Hydro Generator Accessory for ChekPoint Sensor Faucets

感应龙头的自发电装置

- Flow rate of 0.5 GPM (1.9 LPM) - 1.0 GPM (3.8 LPM) is required for use with low flow hydrogen
- Utilizes hydroelectric power, eliminating the need for batteries or hardwire transformers
- Generates and stores its own power, saving energy and money
- Requires a minimum of 10 activations a day at a minimum of both 0.5 GPM (1.9 LPM) and 20 PSI (1.4 bar) to maintain charge
- Provides up to 10 years of battery life

- 适用于流量为0.5 GPM (1.9 LPM) - 1.0 GPM (3.8 LPM)的低流量龙头
- 利用水力发电, 无需电池或硬线变压器
- 电源自发生并储存, 节能省钱
- 要求每天至少激活龙头10次, 每次至少0.5 GPM (1.9 LPM)且达到20 PSI (1.4 bar)才能维持电量
- 电池寿命可达10年



ChekPoint Electronic Faucet models compatible with the EC-HYDROGEN-LF Low Flow Hydrogenerator:

与EC-HYDROGEN-LF低流量发电机兼容的ChekPoint电子感应龙头型号包括:

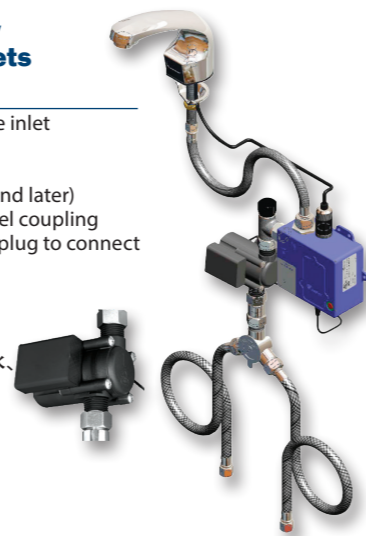
EC-3100	EC-3102	EC-3103
EC-3104	EC-3130	EC-3132
EC-3142		

EC-HYDROGEN Hydro Generator Accessory for ChekPoint Sensor Faucets

感应龙头的自发电装置

- Hydro generator with 1/2" NPSM male inlet and outlet threads
- Eliminates need for AC or DC back-up
- Retrofit to existing EC-models (2007 and later)
- Includes generator, (1) 1/2" NPSM swivel coupling
- 71" (1800 mm) power cord with male plug to connect to control module
- Production location: Taiwan

- 自发电装置配备1/2"NPSM外螺纹进水、出水口螺纹
- 不再需要AC或DC
- 对现有EC型号的更新(2007年之后)
- 包括发电机, 1/2" NPSM旋转接头
- 71" (1800 mm)长带插头电源线, 连接中央控制模块
- 产地: 台湾



Order the ChekPoint models to include the hydro generator by adding "-HG" to model: EC-3100-HG, EC-3101-HG, EC-3102-HG and EC-3103-HG, OR order EC-Hydrogen for retrofit kit

订购ChekPoint自发电装置的型号后缀需有"-HG", EC-3100-HG, EC-3101-HG, EC-3102-HG和EC-3103-HG 或者订购 EC-Hydrogen 组件

Electronic Faucets 电子感应龙头

Electronic Faucets:

Saving as much as one gallon per hand wash, T&S electronic faucets are an ideal water-saving option for a variety of applications. These smart faucets only turn on when a user's hands are under the spout and flow at a predetermined low-flow rate. Now, with our Hydro-generator, you can save water and energy. As one of three power options for T&S electronic faucets, our Hydro-generator harnesses the flow of water to generate enough electricity to power its next use.

感应龙头:

T&S电子感应龙头每洗一次手便可节约近1加仑的水(3.79L), 是众多龙头中节水的理想选择。这种智能龙头仅在将手放置水嘴下时才会出水, 并使流量为预设值好的低流量。如今, 我们的自发电装置可以帮您既节水又节能。自发电装置作为T&S电子感应龙头的3个供电方式之一, 能通过水的流动产生足够电力, 以便下次使用。

EC-3100 Electronic Faucet

电子感应龙头

- Single hole sensor faucet
- Deck mount, rigid gooseneck
- AC-DC control module
- Temperature control mixing valve
- Deck mounting hole I.D.: 25mm
- Production location: China

- 单孔感应龙头
- 台式安装, 固定式鹅颈
- AC-DC控制模块
- 能调节温度的混水阀
- 台面安装孔直径: 25mm
- 产地: 中国



EC-3101 Electronic Faucet

电子感应龙头

- Wall mount sensor faucet
- Rigid gooseneck
- AC-DC control module
- Temperature control mixing valve
- Wall mounting hole I.D.: 25mm
- Production location: China

- 单孔感应龙头
- 墙上安装, 固定式鹅颈
- AC-DC控制模块
- 能调节温度的混水阀
- 墙面安装孔直径: 25mm
- 产地: 中国



EC-3102 Electronic Faucet

电子感应龙头

- Single hole sensor faucet
- Deck mount, cast spout
- AC-DC control module
- Temperature control mixing valve
- Deck mounting hole I.D.: 25mm
- Production location: China

- 单孔感应龙头
- 台式安装, 铸造水嘴
- AC-DC控制模块
- 能调节温度的混水阀
- 台面安装孔直径: 25mm
- 产地: 中国



EC-3103 Electronic Faucet

电子感应龙头

- 4" (102 mm) centerset sensor faucet
- Deck mount, cast spout
- AC-DC control module
- Temperature control mixing valve
- Deck mounting hole I.D.: 25mm, 13mmx2, Clearance: 102mm
- Production location: China

- 中心距为4" (102mm)感应龙头
- 台式安装, 铸造水嘴
- AC-DC控制模块
- 能调节温度的混水阀
- 台面安装孔直径: 25mm; 13mmx2, 间距102mm
- 产地: 中国



EC-3100-LF22-SB Electronic Faucet

电子感应龙头

- Chrome plated brass single hole deck mounted electronic sensor faucet
- Surgical bend rigid gooseneck with 2.2 GPM (8.3 LPM) laminar flow vandal resistant aerator
- Modular assembly for easy installation
- AC/DC waterproof control module box with integral strainer
- (2) 3/8" compression, 18" (457 mm) long flexible stainless steel hot and cold water supply hoses
- Check valve assembly for cross flow prevention
- Hands-free washing reduces risk of contamination and saves water
- Production location: China

- 镀铬黄铜单孔台出电子感应龙头
- 医用外科弯曲固定式鹅颈, 带有2.2GPM(8.3LPM)平流防破坏起泡器
- 快速安装的模块化装配
- 带滤网的AC/DC防水控制盒
- 压缩 (2) 3/8", 长18" (457mm)不锈钢冷热水软管
- 防止串流的止回阀装配
- 无接触冲洗, 降低感染率
- 产地: 中国



Sensor Faucets (BDE series): the parts of the old and new products are not interchangeable. The parts of the old products will be kept for 5 years to 2026
感应龙头 (台下型系列): 新老产品的配件互不通用, 老产品配件库存保留5年至2026年



NEW MODELS in T&S's ChekPoint™ Above Deck Electronic Faucets
新型号! T&S ChekPoint™系列 台上型电子感应龙头

Above Deck Electronic Faucet (ADE) Feature:
台上型电子感应龙头特点:

- Side temperature adjustment handle
- The temperature adjustment handle can be removed
- AC/DC battery: 6V Lithium
- Above deck controls, easy for installation and maintenance
- Water-resistant control module with internal flow control switches
- Customizable auto time-out and shut-off delay settings
- Optional auto-flush feature flows water for 30 seconds after every 12 inactive hours
- Plug-in AC transformer or battery power options
- 侧方带有温度调节手柄
- 温度调节手柄可拆除
- AC/DC电池: 6V锂电池
- 控制感应系统在台上, 便于安装维修
- 防水控制盒带有内嵌式流量控制开关
- 可自定义自动暂停及关水延迟设置
- 可选配自动冲洗功能, 每闲置12小时龙头会自动冲洗30秒
- 电源可选配插入式AC变压器或电池

EC-3142
Above Deck Electronic Faucet
台上型电子感应龙头

- Contemporary look
- 32 mm mounting hole, 5 mm anti-rotation pin hole (optional)
- Production location: Taiwan

- 现代感外观
- 32mm安装孔, 5mm防转杆(选配)
- 产地: 台湾



NEW!



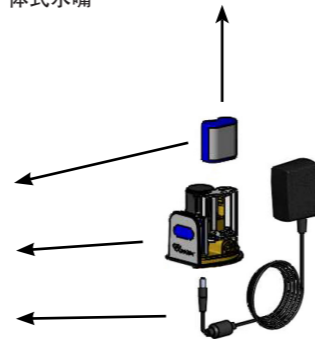
EC-3132
Above Deck Electronic Faucet
台上型电子感应龙头

- Single hole deck mount faucet with polished chrome plated brass body and integral spout
- 2.2 GPM (8.3 LPM) vandal resistant aerator
- Above deck temperature mixing handle
- 32 mm mounting hole, 5 mm anti-rotation pin hole (optional)
- Production location: Taiwan

- 单孔台式龙头, 抛光镀铬黄铜本体和一体式水嘴
- 2.2GPM(8.3LPM)防破坏起泡器
- 台上型温度调节手柄
- 32mm安装孔, 5mm防转杆(选配)
- 产地: 台湾



- 6 VDC Lithium Battery
6V直流锂电池
- ADE Control Module
台上型感应龙头控制盒
- A/C Transformer
电源适配器



EC-3130
Above Deck Electronic Faucet
台上型电子感应龙头

- Single hole deck mount faucet with polished chrome plated brass body
- 5-7/16" (137 mm) swivel/rigid gooseneck
- 2.2 GPM (8.3 LPM) vandal resistant aerator
- Above deck temperature mixing handle
- 32 mm mounting hole, 5 mm anti-rotation pin hole (optional)
- Production location: Taiwan

- 单孔台式龙头, 抛光镀铬黄铜本体
- 5-7/16" (137mm)旋转/固定式鹅颈
- 2.2 GPM(8.3LPM)防破坏起泡器
- 台上型温度调节手柄
- 32mm安装孔, 5mm防转杆(选配)
- 产地: 台湾



All Three ADE base models are available with a factory installed hydrogenerator (-HG model) or retrofit (EC-HYDRO-GEN), and with 4" (-4DP, 102 mm) or 8" (-8DP, 203mm) deck plates.

以上3种台上型的感应龙头都可选择在工厂预装发电机(选择带有-HG后缀的型号)或者改装(EC-HYDROGEN), 也可选择装配4" (后缀-4DP, 102 mm)或者8" (后缀-8DP, 203 mm)

B-2730
Single Lever Mixing Faucet
单柄混水龙头

- Polished chrome plated brass body
- 4' (1.2 m) sidespray with hose
- 9" (229 mm) swivel spout
- 16" (406 mm) flexible stainless steel braided supply hoses with 3/8" compression inlets
- Chrome plated deckplate
- See deck mounting holes in line drawing on T&S Website
- Production location: China

- 抛光镀铬黄铜本体
- 4' (1.2 m)侧装喷阀软管
- 9"(229mm)摇摆水嘴
- 配有16"(406mm)不锈钢编织进水管和3/8"压缩进水口
- 镀铬龙头底座
- 开孔尺寸请参看T&S网站上相应型号分解图
- 产地: 中国



B-2742
Single Lever Faucet
单柄水龙头

- Single lever side mount base faucet
- Swivel / rigid gooseneck assembly with B-0199-06 aerator
- Two (2) 16" (406 mm) long flexible supply hoses with 3/8" compression fittings
- Production location: United States

- 侧装单柄龙头手柄, 调节水温
- 带B-0199-06起泡器的摆动/固定式颈管
- 配有2根16"(406mm)不锈钢进水管和3/8"压缩接头
- 产地: 中国



B-2743
Single Lever Faucet
单柄水龙头

- Single lever side mount base faucet
- Swivel / rigid gooseneck assembly with B-0199-06 aerator: 2.2 GPM (8.3 LPM)
- Two (2) 16" (406 mm) long flexible supply hoses with 3/8" compression fittings
- See deck mounting holes in line drawing on T&S Website
- Production location: United States

- 侧装单柄龙头手柄, 调节水温
- 摆动/固定式鹅颈管, 带B-0199-06起泡器, 出水流量: 2.2 GPM(8.3LPM)
- 配有2根16"(406mm)不锈钢进水管和3/8"压缩接头
- 4'(1.2 m) 侧装喷阀
- 开孔尺寸请参看T&S网站上相应型号分解图
- 产地: 美国



013842-45
Sidespray
小喷阀

- 48" (1219 mm) reinforced vinyl hose
- 1/4" NPSM female thread
- Production location: China

- 长48"(1219mm)的聚乙烯软管
- 1/4" NPSM内螺纹接口
- 产地: 中国



B-0712
Push Button Metering Faucet
按钮式延时龙头

- 1/2" NPSM male inlet
- 4-1/8" (105 mm) center of faucet to center of spout
- Clearance: 1 5/16" (34 mm)
- B-0199-03 aerator: 2.2 GPM (8.3 LPM)
- Deck mounting hole I.D.: 29mm
- Production location: United States

- 1/2"NPSM外螺纹进水口
- 出水嘴中心到龙头中心距离为4-1/8"(105 mm)
- 出水口离台面距离1 5/16" (34 mm)
- B-0199-06 起泡器, 出水流量: 2.2 GPM(8.3LPM)
- 台面安装孔直径: 29mm
- 产地: 美国



B-0712-PA
Pivot Action Metering Faucet
轴动延时龙头

- 1/2" NPSM male inlet
- 4-1/8" (105 mm) center of faucet to center of spout
- Clearance: 1-5/16" (34 mm)
- B-0199-03 aerator: 2.2 GPM (8.3 LPM)
- Deck mounting hole I.D.: 29mm
- Production location: United States

- 1/2"NPSM外螺纹进水口
- 水嘴中心到龙头中心距离为4-1/8"(105 mm)
- 出水口离台面高1-5/16" (34 mm)
- B-0199-06 起泡器, 出水流量: 2.2 GPM(8.3LPM)
- 台面安装孔直径: 29mm
- 产地: 美国



B-0805
Slow Self-Closing Single Temperature Faucet
下压延时龙头

- 1/2" NPSM male inlet with coupling nut
- Fits sinks up to 1" (25 mm) thick
- 4-15/16"(126 mm) high
- B-0199-02 aerator (2.2 GPM/8.3 LPM)
- Deck mounting hole I.D.: 25mm
- Production location: United States

- 1/2"NPSM外螺纹进水口带有接头螺母
- 适用于厚度最大为1"(25mm)的星盆
- 高度为4-15/16"(126mm)
- 采用2.2 GPM (8.3LPM)起泡器B-0199-02
- 台面安装孔直径: 25mm
- 产地: 美国



B-2711
Single Lever Faucet
单柄混水龙头

- Polished chrome plated brass body
- 4" (102 mm) centerset faucet
- 1/2" NPSM male inlets shanks and 2.2 GPM (8.3 LPM) aerator
- Deck mounting hole I.D.: 25mmX2, 4" (102 mm) center
- Production location: China

- 抛光镀铬黄铜本体
- 冷热水管间距4"(102mm)
- 1/2" NPSM外螺纹进水口
- 出水流量2.2GPM(8.3LPM)
- 台面安装孔直径: 25mmX2, 两孔间距102mm
- 产地: 中国



Single Sink Faucet / Service Sink Faucet 单星盆龙头/拖把池龙头

B-0715 Single Sink Faucet, Wall Mounted 单星盆龙头, 墙出

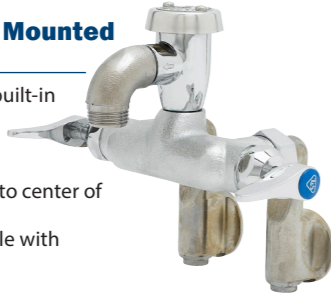
- 1/2" NPT male inlet
- Adjustable flange
- 6" (152 mm) inlet to center of outlet
- Lever handle with blue index
- Wall mounting hole I.D.: 25mm
- Production location: United States



- 1/2"NPT外螺纹进水口
- 可调节的法兰接头
- 龙头进水口到出水口距离是6"(152mm)
- 一字形手柄带有蓝色指示片
- 墙面或背板安装孔直径: 25mm
- 产地: 美国

B-0669-RGH Service Sink Faucet, Wall Mounted 拖把池龙头, 墙出

- 1/2" female adjustable inlets with built-in service stops
- Adjustable centers from 2-1/4" (57mm) to 8-1/4" (210mm)
- 5-1/2" (140mm) from back of inlets to center of outlet
- Atmospheric vacuum breaker nozzle with garden hose thread
- Includes spring check
- Production location: China



- 1/2"内螺纹进水口内置维修开关
- 进水间距调节范围为2-1/4"(57mm)至8-1/4"(210mm)
- 进水口后缘与出水口中心间距5-1/2"(140mm)
- 配置真空断流器, 水嘴处可外接管子
- 配置弹簧止回阀
- 产地: 中国

B-0672-CR-RGH Service Sink Faucet, Wall Mounted 拖把池龙头, 墙出

- 8" (203mm) centers adjustable from 7-3/4" (197mm) to 8-1/4"(210mm)
- 4-11/16" (118mm) from back of inlets to center of outlet
- Rough chrome plated finish
- Plain end spout with pail hook
- 1/2" NPT female eccentric flange inlets
- Wall mounting hole I.D.: 25mmx2, 8" (203mm) center
- Optional Compress Cartridge model: B-0672-RGH
- Production location: China



- 8"(203mm)间距, 调节范围从7-3/4"(197mm)至8-1/4"(210mm)
- 进水口后缘到出水口中心间距为4-11/16"(118mm)
- 带提桶挂钩的水嘴
- 1/2" NPT内螺纹偏心法兰进水口
- 墙面或背板安装孔直径: 25mmx2, 两孔间距203mm
- 另有压缩阀芯型号可选: B-0672-RGH
- 产地: 中国

B-0665-BSTR Service Sink Faucet 拖把池龙头

- Wall-mounted faucet with rough chrome plated finish
- Built-in service stops in body
- 8" (203 mm) centers adjustable from 7-3/4" (197 mm) to 8-1/4" (210 mm)
- Vacuum breaker spout with pail hook & 3/4" garden hose outlet
- Upper support rod, 1/2" NPT female inlets
- Wall mounting hole I.D.: 25mmx2, clearance 203 mm
- Optional Ceramic Cartridge model: B-0665-CR-BSTR
- Production location: China



- 镀铬墙式水龙头, 本体内嵌止动块
- 8"(203 mm)进水间距, 调节范围为7-3/4"(197mm)至8-1/4"(210mm)
- 水嘴配备真空调节器, 可连接3/4"螺纹接口的软管和提桶挂钩
- 上部带有支撑杆, 1/2"NPT内螺纹进水口
- 墙面或背板安装孔直径: 25mmx2, 两孔间距203mm
- 另有陶瓷阀芯型号可选: B-0665-CR-BSTR
- 产地: 中国



Spout and Pedal Valves 水嘴及脚踏阀

B-0520 Rigid/Swivel Gooseneck Spout 固定式/旋转式鹅颈管

- Deck-mounted gooseneck spout
- 5-3/4" (145mm) spread (133X)
- 10-5/8" (270 mm) high from deck to top
- 6-3/16" (158 mm) clearance from deck to stream regulator outlet
- Deck mounting hole I.D.: 25mm
- Production location: United States



- 台式鹅颈管
- 展开的距离为5-3/4"(145mm)
- 从台面到顶部距离为10-5/8"(270mm)
- 从台面到出水口的距离为6-3/16"(158 mm)
- 台面安装孔直径: 25mm
- 产地: 美国

B-0502 Double Foot Pedal Valve 脚踏阀—双脚

- Floor-mounted double foot pedal valve for hot and cold water
- Metering cartridges
- Inlets on 2-7/16" (61 mm) centers
- 1" (25 mm) from floor to center of inlets
- 1/2" NPT female inlets and outlets
- Furnished with two mounting screws included
- Production location: United States



- 安装在地面上的双脚踏式阀门
- 计量阀芯
- 进水口中心间距为2-7/16"(61mm)
- 地面到进水口中心的距离1"(25mm)
- 1/2"NPT内螺纹的进水、出水口
- 配有两个螺钉
- 产地: 美国

B-0507 Single Pedal Valve, Floor Mounted 脚踏阀—单脚, 地板安装

- For hot or cold water
- 1" (25 mm) from floor to center of inlets
- 1/2" NPT female inlets and outlets
- Furnished with two mounting screws included
- Production location: United States



- 单热或单冷出水
- 地面到进水口中心的距离1"(25mm)
- 1/2"NPT内螺纹的进水、出水口
- 配有两个螺钉
- 产地: 美国

B-2464 Single Pedal Valve & Rigid/Swivel Gooseneck Spout 脚踏阀—单脚, 地板安装

- Includes the B-0507 single pedal valve
- 5-13/16" (148 mm) swivel gooseneck spout
- Rosespray outlet
- Deck mounting hole I.D.: 25mm
- Production location: United States



- 包含B-0507单脚踏阀
- 5-13/16(148mm)旋转型鹅颈管
- 莲蓬型出水口
- 台面安装孔直径: 25mm
- 产地: 美国

B-0508-01 Single Pedal Valve, Wall Mounted 脚踏阀—单脚, 墙出

- For hot or cold water
- Self-closing valve
- Angle loose key stop on inlet (B-1351)
- Loose key volume control valve with 3/8" IPS female outlet (B-1355)
- 1/2" NPT female inlet
- Production location: United States



- 单冷或单热出水
- 瞬间自动关闭
- 内置式止动锁装置(B-1351)
- 1/2"NPT内螺纹进水口
- 产地: 美国

B-0509 Double Knee Pedal Valve 双膝型踏板阀

- Inlets on 2-7/16" (61 mm) centers
- 1/2" NPT Inlets & Outlet
- Self-closing valve
- Production location: United States



- 进水口中心距为2-7/16"(61mm)
- 1/2"NPT内螺纹进水口与出水口
- 瞬间自动关闭
- 产地: 美国

B-0507-509PDL Knee Pedal Valve 单膝型踏板阀

- 1/2" NPT Female inlet & outlet
- Pedals 6 13/16"(173mm) long
- 2 mounting screws
- Production location: United States



- 1/2"NPT内螺纹进水口及出水口
- 踏板6 13/16"(173mm)长
- 两侧两枚固定螺钉
- 产地: 美国

Glass Fillers / Dipperwell Bowl and Faucet 推杯龙头/流水井和流水井龙头

T&S Glass Fillers have a sleek new look, and newly designed and improved features.
T&S推杯龙头 时尚,前卫设计

B-1210/ B-1210-01 Glass Filler 推杯龙头

- Deck-mounted pedestal push back glass filler
- 1/2" NPT male shank, 2" (51 mm) long
- Dark blue push back arm is easier to operate
- B-1210: Base of flange to outlet is 8" (203 mm)
- B-1210-01: Same as B-1210 except base of flange to outlet is 10" (253 mm)
- Deck mounting hole I.D.: 25mm
- Production location: United States

- B-1210: 从法兰底座到出水口的距离是203mm
- B-1210-01 与B-1210相同,除了底座到出水口的距离是253mm
- 台式安装后推式注水器
- 1/2"NPT外螺纹连接杆,长2"(51mm)
- 深蓝色后压式手柄,操作更简单
- 瞬时关闭设计
- 台面安装孔直径: 25mm
- 产地: 美国



B-1230 Water Station 注水站

- Glass filler water station includes:
- 10-5/8" (270 mm) x 12-5/8" (321 mm) drip pan, stainless steel
 - B-1210 push back glass filler
 - 1-1/4" (32mm) drain
 - Production location: United States

- 杯式注水站包括:
- 10-5/8"(270mm)x12-5/8"(321mm) 不锈钢滴水盘
- B-1210后压式推杯龙头
- 1-1/4" (32mm)排水管
- 产地: 美国



B-2282-01 Dipperwell Bowl and Faucet 流水井和流水井龙头

- Includes B-2282 faucet and 006678-45 bowl
- Deck mounting hole I.D.: 22mm, 146mm. Attention the clearance between faucet and bowl.
- Production location: China

- 包括B-2282流水井龙头和006678-45流水井
- 流水井进水管中心距到流水井龙头进水管中心距为121mm
- 台面安装孔直径: 22mm, 146mm, 注意龙头与流水井的间距。
- 产地: 中国

B-2282 Dipperwell Faucet 流水井龙头

- 6-1/16" (154 mm) overall height
- 1-11/16" (43 mm) clearance
- 2-3/4" (70 mm) shank
- Deck mounting hole I.D.: 22mm
- Production location: China

- 总高度: 6-1/16"(154mm)
- 桌面到出水口距离为1-11/16"(43mm)
- 螺纹柄的长度为2-3/4"(70mm)
- 台面安装孔直径: 22mm
- 产地: 中国

006678-45 Dipperwell Bowl 流水井

- Keeps ice cream scoops and paddles clean and sanitized
- Stainless steel internal cup, outer bowl
- 1-1/2" (38 mm) brass tailpiece drain
- Sits flush with table top
- Drains quickly and easily
- Production location: China

- 保持冰淇淋勺和搅拌棒的清洁卫生
- 不锈钢内杯, 外杯
- 外径为1-1/2"(38mm)的铜制下水管
- 固定安装在桌面上
- 排水迅速、及时
- 产地: 中国



Waste Valves / Big-Flo Faucets 排水阀/大流量龙头

010387-45 Basket Strainer for Waste Valve 排水阀滤网

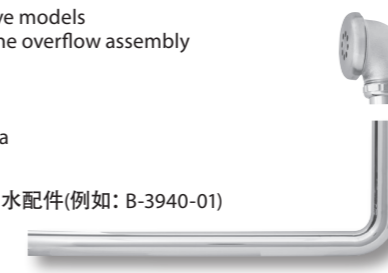
- Available on all 3-1/2" models as a modification
- Also available: Flat Strainer - 3" (010385-45); 3-1/2" (010386-45)
- Production location: China
- 适用于替换所有3-1/2"型号的滤网
- 提供平滤网 - 3"(010385-45); 3-1/2"(010386-45)
- 产地: 中国



Overflow Assembly For Waste Valve 排水阀溢水组件

- Available on all waste valve models
- All "-01" models include the overflow assembly (ex.: B-3940-01)
- Tube only - (011355-45)
- Head only - (011356-45)
- Production location: China

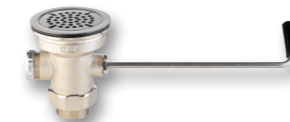
- 适用于所有排水阀产品
- 所有型号后缀"-01"包括排水配件(例如: B-3940-01)
- 配备出水管-(011355-45)
- 配备弯头-(011356-45)
- 产地: 中国



B-3940 Twist Waste Valves 排水阀

- Twist rotary waste valves
- Drain adapter
- Valve bodies come standard with 2" (51 mm) outlet
- 3" (76 mm) sink opening applications
- Production location: China

- 弯杆排水阀
- 排水接头
- 采用标准的2"(51mm)出水接头
- 安装于3"(76mm)水槽开孔
- 产地: 中国



B-3942-01 Waste Valve and overflow Assembly 排水阀和排水配件

- "-01" models include an overflow assembly
- Production location: China

- "-01"型号包括排水阀和溢水头和溢水管
- 产地: 中国



型号 Model	水槽开孔 Sink Opening	排水口径 Drain Outlet	手柄长度 Handle length
B-3940	3"	1-1/2" & 2" male	312mm
B-3940-01*	3"	1-1/2" & 2" male	312mm
B-3942	3"	2" male & 1-1/2" female	312mm
B-3942-01*	3"	2" male & 1-1/2" female	312mm
B-3950	3-1/2"	1-1/2" & 2" male	312mm
B-3950-01*	3-1/2"	1-1/2" & 2" male	312mm
B-3952	3-1/2"	2" male & 1-1/2" female	312mm
B-3952-01*	3-1/2"	2" male & 1-1/2" female	312mm

male为外螺纹; female为内螺纹

- "-01" models include an overflow assembly

- "-01" 后缀的型号已包括溢水口组件

- Two extra handles available: Models with "XS" suffix are shorter handles: 198mm, and "XL" suffix are longer handles: 413mm. Such as: B-3942-XS, B-3950-XL

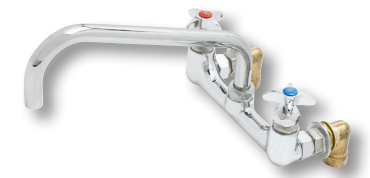
- 另有两种手柄可选: 后缀加XS的型号表示短手柄, 长度198mm, XL长手柄, 长度413mm.

B-3942-XS

B-3952-XL

B-0290 Big-Flo Faucet 大流量龙头

- Wall mounted
- 8" (203 mm) centers
- 12" (305 mm) swing nozzle (114X)
- Four-arm handles
- 1-1/4" (32 mm) mounting holes
- Production location: United States



- 墙出双孔
- 8"(203mm)间距龙头
- 12"(305mm)摆动式水嘴(114X)
- 十字手柄
- 开孔直径1-1/4" (32 mm)
- 产地: 美国

B-0293 Big-Flo Faucet 大流量龙头

- 8" (203 mm) centers
- Deck mounted
- 12" (305 mm) swing nozzle (114X)
- Four-arm handles
- Production location: United States



- 8" (203mm)间距龙头底座
- 双孔台出
- 12"(305mm)摆动式水嘴(114X)
- 十字手柄
- 产地: 美国

B-0296 Big-Flo Faucet 大流量龙头

- Deck mounted
- Single temperature control valve
- 1/2" NPT male inlet
- 12" (305 mm) swing nozzle (114X)
- Four-arm handles
- Production location: United States



- 单孔台出
- 单温控制
- 1/2" NPT外螺纹进水接口
- 12"(305mm)摆动式水嘴(114X)
- 十字手柄
- 产地: 美国

B-3992 Module Waste Valve Module排水阀

- Module design for easy installation and maintenance
- For 3-1/2" sink opening
- 2" NPT male x 1-1/2" NPT female outlet
- Production location: United States

- 安装和维护十分简便
- 适用3-1/2"星盆孔
- 2" NPT外螺纹转1-1/2" NPT内螺纹
- 产地: 美国



Pot and Kettle Fillers 汤锅注水龙头

B-0590 Pot Filler Faucet 汤锅注水龙头

- Deck mounted faucet and single control
- 18" (457 mm) double joint nozzle (002848-40)
- Insulated on-off volume control grip on tip of nozzle
- Deck mounting hole I.D.: 25mm
- Production location: United States

- 台出龙头，单温控制
- 18"(457mm)双层叠加式水嘴(002848-40)
- 水嘴端有绝缘开关
- 台面安装孔直径: 25mm
- 产地: 美国



B-0592 Pot Filler Faucet 汤锅注水龙头

- Same with B-0590, except a four-arm handle and wall mounted
- Wall mounting hole I.D.: 25mm
- Production location: China

- 同B-0590, 除了十字手柄和墙出水
- 墙面或背板安装孔直径: 25mm
- 产地: 中国



B-0598 Pot Filler Faucet 汤锅注水龙头

- Wall-mounted faucet with 8" (203 mm) centers
- 24" (610 mm) double joint nozzle
- Insulated on-off control grip on tip of nozzle
- 1/2" NPT female inlets
- Wall mounting hole I.D.: 25mm
- Production location: United States

- 墙式龙头间距为8"(203 mm)
- 24"(610mm)双层叠加式水嘴
- 水嘴端有绝缘开关
- 1/2"NPT内螺纹进水接口
- 墙面或背板安装孔直径: 25mmx2,两孔间距203mm
- 产地: 美国



B-0605 Pot and Kettle Filler 汤锅注水龙头

- Wall-mounted single control faucet
- 1/2" NPT female inlet
- 3/8" NPT vacuum breaker
- B-0068-H2A flexible stainless steel hose
- Hook nozzle with self-closing valve
- Wall mounting hole I.D.: 25mm
- Production location: United States

- 墙式单孔龙头
- 1/2" NPT内螺纹的进水接口
- 3/8" NPT真空调节器
- 配备B-0068-H2A不锈钢双扣软管
- 钩型水嘴配备自动关闭阀
- 墙面或背板安装孔直径: 25mm
- 产地: 美国



B-0610 Pot and Kettle Filler 汤锅注水龙头

- Wall-mounted mixing faucet with 8" (203 mm) centers
- Vacuum breaker (B-0968)
- B-0068-H2A flexible stainless steel hose
- Hook nozzle with self-closing valve
- 1/2" NPT female inlets
- Wall mounting holes I.D.: 25mmx2, clearance 203mm
- Production location: United States

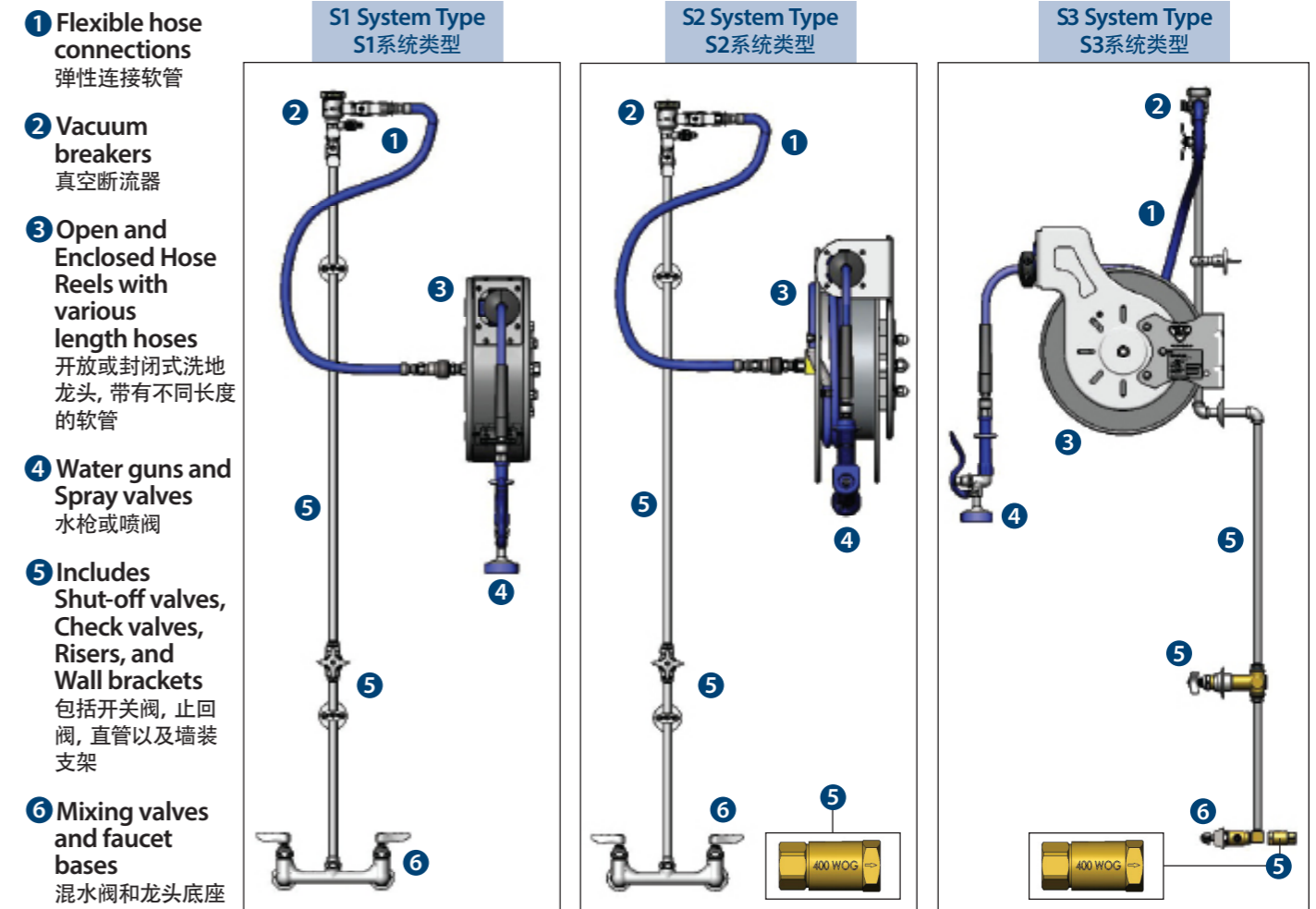
- 间距为8"(203mm)墙式混水龙头
- 真空调节器(B-0968)
- 配备B-0068-H2A不锈钢双扣软管
- 钩型水嘴配备自动关闭阀
- 1/2"NPT内螺纹进水接口
- 墙面或背板安装孔直径: 25mmx2, 两孔间距203mm
- 产地: 美国



Hose Reel Systems 洗地龙头系统

The best choice to ensure code compliance and efficiency
确保符合规范及效率的最佳选择

We offer a wide selection of Complete Hose Reel System models
我们为您提供了各种成套洗地龙头系统的型号



T&S can help you configure a custom system based on your needs with a wide variety of options
T&S有各种各样的选项, 可以基于您的需求为您定制具体洗地龙头系统

Naming Convention of T&S Hose Reel System
T&S洗地龙头系统命名规则

B- 7 2 3 2 - U 01 W S1 E

Reel Material
卷盘材质

1 = Stainless Steel
不锈钢

2 = Painted Steel
涂层钢

Diameter
管径

2 = 3/8"
3 = 1/2"
(stainless models only
仅限不锈钢型号)

Spray Valve
喷阀

-01 = EB-0107
-1L = B-0107
-02 = MV-2516-24
-03 = MV-2516-34
-04 = MV-2516-44
-05 = MV-2522-24
-06 = MV-2522-34
-07 = MV-2522-44
-08 = B-0108-H
-8L = B-0108
-10 = EB-2322
-11 = MV-3516-24

System Type*
系统类型*

See chart below
详见下表

Cartridge Type
阀芯类型

E = Eterna
压缩阀芯

C = Cerama
陶瓷阀芯

Hose Length
软管长度

3/8" Diameter Options
管径3/8" 选配

1 = 15' (4.6 m, open models only, 仅限开放式)

2 = 30' (9.1 m, closed models only, 仅限封闭式)

3 = 35' (10.7 m, open models only, 仅限开放式)

4 = 50' (15.2 m)

1/2" Diameter Options
管径1/2" 选配

3 = 35' (10.7 m, open models only, 仅限开放式)

4 = 50' (15.2 m)

Reel
卷盘

C = Closed
封闭式 (3/8" only, 仅限管径3/8"的型号)

U = Open
开放式

Mounting Brackets
安装支架

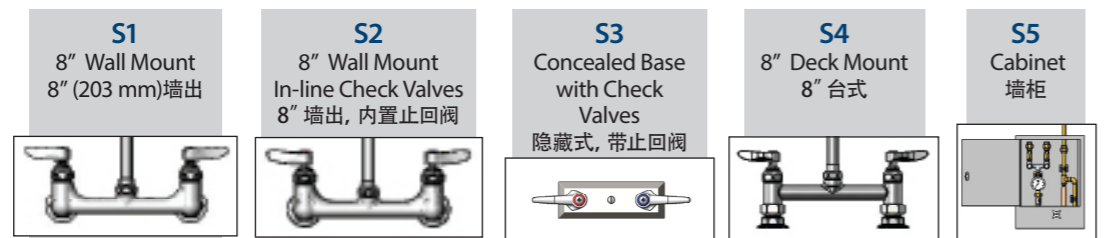
P = Pivot/Ceiling Bracket
旋转式/天花板支架

W = Wall Swing Bracket
墙出摇摆支架

T = Table Leg Bracket
桌腿支架

X = No Bracket
无支架

*System Type/系统类型:



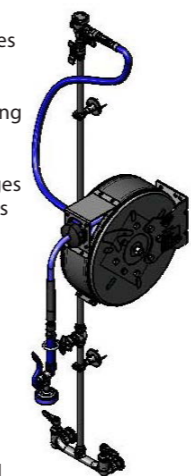
Model /型号 (for example/示例): B-7232-U01XS1E B-7232-U01XS2E B-7232-U01XS3 B-7232-U01WS4E B-7232-U01XS5

Available T&S Hose Reel System Models/在售T&S洗地龙头系统型号:

B-7122-C01XS1E	B-7212-U01XS3	B-7232-U01XS2E	B-7232-U01WS5
B-7212-U01WS1E	B-7222-C01XS1E	B-7232-U01WS3	B-7232-U01XS5
B-7212-U01XS1E	B-7232-U01WS1E	B-7232-U01XS3	B-7232-U05XS1E
B-7212-U01WS2E	B-7232-U01XS1E	B-7232-U01WS4E	
B-7212-U01XS2E	B-7232-U01WS2E	B-7232-U01XS4E	

B-7222-C01XS1E
Enclosed 30' Hose Reel System
封闭式30' 洗地龙头系统

- All-in-one system with exposed piping and accessories
- 8" (203 mm) wall mount mixing faucet w/ polished chrome plated brass body
- Quarter-turn Eterna compression cartridges with spring checks to prevent cross flow of water
- Lever handles w/ color coded indexes
- 1/2" NPT female eccentric inlets with 2" (51 mm) flanges
- EasyInstall 16" (406 mm) and rigid 40" (1016 mm) risers w/ control valve between risers
- Continuous pressure vacuum breaker
- 36" (914 mm) flexible water hose connector with stainless steel quick disconnect
- Enclosed epoxy coated hose reel
- High flow spray valve w/ heat resistant blue handle, swivel and hold down ring
- 3/8" x 30' (9.1 m) heavy-duty non-marking hose
- Material: Polished chrome plated brass faucet body, risers and spray valve body, chrome plated metal handles, control valve and vacuum breaker and metal enclosed reel
- Production location: China



- 一体式明管连接于附件
- 8"(203mm)墙出混水龙头带有抛光镀铬本体
- 90°旋转Eterna压缩阀芯带有弹簧止回阀,以防止水流串流
- 一字手柄带有冷水标色指示片
- 1/2"NPT内螺纹偏心进水口, 2"(51mm)法兰
- 快装16"(406mm)和固定式40"(1016mm)直管之间带有控制阀
- 续压真空断流器
- 36"(914mm)弹性水管接头带有不锈钢快速断开
- 封闭式涂层卷盘
- 高流量喷阀带有隔热蓝色手柄, 旋转件和压环
- 3/8"x 30'(9.1m)重工型无痕软管
- 材质: 抛光镀铬黄铜龙头本体、直管和喷阀本体, 镀铬金属手柄、控制阀和真空断流器, 不锈钢卷盘
- 产地: 中国

B-7232-U01XS1E
Enclosed 50' Hose Reel System
封闭式50' 洗地龙头系统

- 8" (203 mm) wall mount mixing faucet w/ polished chrome plated brass body
- Quarter-turn Eterna compression cartridges with spring checks to prevent cross flow of water
- EasyInstall 16" (406 mm) and rigid 40" (1016 mm) risers w/ control valve between risers
- Continuous pressure vacuum breaker
- Open coated hose reel
- High flow spray valve w/ heat resistant blue handle, swivel and hold down ring
- 3/8" x 35' (10.7 m) heavy-duty non-marking hose
- Material: Polished chrome plated brass faucet body, risers and spray valve body, chrome plated metal handles, control valve and vacuum breaker and metal reel
- Production location: China



- 8"(203mm)墙出混水龙头带有抛光镀铬本体
- 90°旋转Eterna压缩阀芯带有弹簧止回阀,以防止水流串流
- 快装16"(406mm)和固定式40"(1016mm)直管之间带有控制阀
- 续压真空断流器
- 开放式涂层卷盘
- 高流量喷阀带有隔热蓝色手柄, 旋转件和压环
- 3/8"x 35'(10.7m)重工型无痕软管
- 材质: 抛光镀铬黄铜龙头本体、直管和喷阀本体, 镀铬金属手柄、控制阀和真空断流器, 不锈钢卷盘
- 产地: 中国

B-2339
Open Reel 15' Hose Reel System
开放式15' 洗地龙头系统

- Flush mount stainless steel control cabinet with locking latch contains water control system
- 1/2" NPT female union inlets (2) and outlet
- 1/2" in-line check valves
- Loose key mixing valve with compression spindles, tee handles and screws
- Bi-metallic thermometer with 3" (76 mm) dial face
- Dual check valve backflow preventer
- Shut-off valve with 4-arm handle operable from outside of closed cabinet
- Enclosed coated hose reel with 3/8" NPT female inlet
- High flow spray valve w/ heat resistant blue handle, hold down ring & swivel
- 3/8" x 30' (9.1 m) heavy-duty non-marking hose rated to 300 PSI (20.7 bar)
- Ratcheting system holds the length of hose until a slight tug to retract automatically
- Adjustable hose bumper
- Multi-fit bracket for wall, ceiling or under counter mounting
- Material: Stainless steel cabinet, chrome plated metal handle, brass control unit components and metal enclosed reel and wall bracket.
- Production location: United States



- 镶嵌式不锈钢控制柜, 带锁紧门及供水控制系统
- 1/2" NPT内螺纹进水口(2个)及出水口(1个)
- 1/2"内嵌式止回阀
- 活动阀带压缩轴、三通手柄及螺丝
- 双金属温度计带3"(76mm)刻度盘
- 双止回防回流阀
- 关水阀带十字手柄, 可在封闭柜外部操作
- 封闭式涂层洗地龙头, 带3/8"NPT内螺纹进水口
- 大流量喷阀带隔热蓝色手柄、压环及旋转件
- 3/8"x 30'(9.1m)重工型无痕软管, 额定300PSI(20.7 bar)
- 棘轮系统能卡住软管, 轻轻一拉便可自动收回
- 可调软管止动块
- 多导向支架, 可安装于墙面, 天花板或柜台下
- 材质: 不锈钢柜, 镀铬金属手柄, 黄铜控制装置组件, 金属封闭式卷盘及墙装支架
- 产地: 美国

Naming Convention of T&S Hose Reel
T&S洗地龙头命名规则

**Model B-7000 Series/B-7000系列
OPEN Hose Reels/开放式洗地龙头**

B - 7

Reel Material
卷盘材质

- 1 = Stainless Steel
不锈钢
- 2 = Painted Steel
涂层钢

Hose Length
软管长度

- 0 = 12' (3.6 m)
- 1 = 15' (4.6 m)
- 3 = 35' (10.7 m)
- 4 = 50' (15.2 m)

Diameter
管径

- 2 = 3/8"
- 3 = 1/2"
- 5 = 3/4"

(See Spray Valves and Water Guns chart, right)

(喷阀及水枪, 详见右表)

For example: B-7145-02 = Stainless steel open hose reel, 50'(15.2 m) hose with 3/4" diameter, MV-2516-24 Rear Trigger Water Gun (5/16").

例: B-7145-02 = 不锈钢开放式洗地龙头, 50'(15.2m)软管, 3/4"管径, MV-2516-24后扳机水枪(5/16")

**Model B-7000-C Series/B-7000-C系列
ENCLOSED Hose Reels/封闭式洗地龙头**

B - 7

Reel Material
卷盘材质

- 1 = Stainless Steel
不锈钢
- 2 = Painted Steel
涂层钢

Hose Length
软管长度

- 2 = 30' (9.1 m)
- 4 = 50' (15.2 m)

Diameter
管径

- 2 = 3/8"

(See Spray Valves and Water Guns chart, above)

(喷阀及水枪, 详见右表)

For example: B-7222-C01 = Painted Steel enclosed hose reel, 30' (9.1 m) hose with 3/8" diameter, EB-0107 High-Flow Spray Valve.

例: B-7222-C01 = 涂层钢封闭式洗地龙头, 30'(9.1m)软管, 3/8"管径, EB-0107高流量喷阀

Spray Valves and Water Guns

喷阀及水枪

Suffix
后缀

	EB-0107 High-Flow Spray Valve 5.6 GPM @ 60 PSI 高流量喷阀 21.2 LPM @ 4.1 bar	-01
	B-0107 Spray Valve 1.15 GPM @ 60 PSI 喷阀 4.35 LPM @ 4.1 bar	-01M
	MV-2516-24 5/16" dia. flow Rear Trigger Water Gun 7.69 GPM @ 60 PSI 高流量喷阀 孔径5/16" 后扳机水枪 29.1 LPM @ 4.1 bar	-02
	MV-2522-24 5/16" dia. flow Front Trigger Water Gun 8.05 GPM @ 60 PSI 高流量喷阀 孔径5/16" 前扳机水枪 30.5 LPM @ 4.1 bar	-05

These configurators and charts show you how to custom order a hose reel according to its application.

Note: Not all combinations are available. Check with T&S Customer Service for more information

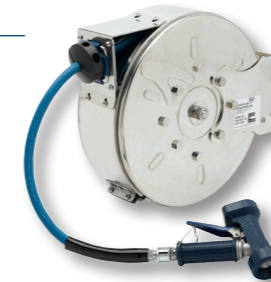
这些搭配和图表展示了如何根据实际应用来选择一个合适的洗地龙头

注意: 不是所有组合出来的洗地龙头型号都有售, 详情可咨询T&S客服

B-7122-C02
Enclosed Retractable Hose Reel
封闭式洗地龙头

- Enclosed reel with stainless steel finish
- 30' (9 m) of heavy-duty blue hose, 3/8" I.D.
- Production location: China

- 不锈钢封闭式卷盘
- 30'(9m)长的蓝色重工软管, 内径3/8"(9.5mm)
- 产地: 中国



B-7245-06
Heavy-Duty Hose Reels
重工洗地龙头

- Open reel with epoxy coated steel finish
- 50' (15.2 m) industrial grade white hose, 3/4" I.D.
- Ratcheting system holds the length of hose until a slight tug; retracts automatically
- 3/4" NPT female inlet
- Stainless steel front trigger water gun
- Production location: China

- 环氧敞开式卷盘
- 50'(15.2m)工业级白色软管, 内径3/4"(19.05mm)
- 棘轮固定长度, 轻轻拉动即可自动收回
- 3/4" NPT内螺纹进水口
- 不锈钢前扳机水枪
- 产地: 中国



G019430-45
Swing Bracket
洗地龙头摇摆支架

- EasyInstall universal stainless steel hose reel bracket
- Fit all T&S 3/8" & 1/2" reels
- One person installation
- Production location: China

- 快装一体式不锈钢洗地龙头支架
- 适用于所有T&S管径为3/8"和1/2"的洗地龙头
- 单人安装
- 产地: 中国



B-7132-01
Open Retractable Hose Reel
开放式洗地龙头

- Open reel with stainless steel finish
- 35' (10.7 m) of heavy-duty blue hose, 3/8" I.D.
- Production location: China

- 不锈钢敞开式卷盘
- 35'(10.7m)长的蓝色重工软管, 内径3/8"(9.5mm)
- 产地: 中国



B-7232-01
Open Retractable Hose Reel
开放式洗地龙头

- Open reel with epoxy coated steel finish
- 35' (10.7 m) of heavy-duty blue hose, 3/8" I.D.
- Production location: China

- 环氧敞开式卷盘
- 35'(10.7m)长的蓝色重工软管, 内径3/8"(9.5mm)
- 产地: 中国



Hose Reel Swivel

洗地龙头旋转件

- Provides easier rotation between the spray device and the hose, making it easier for customers to use

- The swivel will come installed on the spray device when ordered as part of a hose reel
- Spray devices ordered individually will not include the swivel
- Swivels can be ordered individually using the following part numbers:

- 019652-40 for the 3/8" swivel
- 019653-40 for the 1/2" swivel

- Production location: China

- 安装于喷阀/水枪和软管之间, 更方便旋转, 方便客户使用
- 订购洗地龙头时, 旋转件会作为洗地龙头的一部分安装于喷阀/水枪上
- 单独订购喷阀/水枪则不包含旋转件
- 旋转件可单独订购, 型号如下:

- 019652-40用于管径为3/8"的洗地龙头
- 019653-40用于管径为1/2"的洗地龙头

- 产地: 中国



G018477-45
Table Leg Swing Bracket
桌腿摇摆支架

- Stainless steel hose reel bracket
- Fit all T&S 3/8" & 1/2" reels
- Spring loaded latch
- Production location: China

- 不锈钢洗地龙头支架
- 适用于所有T&S管径为3/8"和1/2"的洗地龙头
- 弹簧锁
- 产地: 中国



Cost savings calculator for pre-rinse spray valves 花洒喷阀/节水计算表



T&S low-flow models (B-0107) water flow rate
T&S B-0107花洒喷阀流量(1.15 GPM/4.35 LPM)

4.35 Liters/minute
升/分钟

Current spray valve water flow rate
普通花洒喷阀流量(4 GPM/15.14 LPM)

15.14 Liters/minute
升/分钟

Operating hours per day
日工作小时

3 hour/day
小时/每天

Operating days per year
年工作天数

365 day/year
小时/每天

Water heater performance and costs 加热水的成本

Water heater fuel type
加热水的方式

Electric 用电
 Gas 用气

Water heater efficiency
热吸收率(%)

70 %

Temperature rise through heater
水温加热到(度)

43 °C

Fuel cost
电费(元)/度

¥ 1.2 yuan/kWh
元/度

Water cost
水费(元)/立方米

¥ 5.8 yuan/m³
元/立方米

Results 耗用成本 计算结果

Annual Water consumption
一年用水量(升)

B-0107 low-flow models (per unit)
B-0107花洒喷阀结果

285,795 Liters 升

Current spray valve (per unit)
普通花洒喷阀测试结果

994,698 Liters 升

Annual water cost
一年水费(元)

¥ 1,657.61 元

¥ 5769.25 元

Annual water heating cost
一年电费(元)

¥ 24,579.07 元

¥ 85,546.47 元

Total annual cost
一年总费用(元)

¥ 26,236.68 元

¥ 91,315.72 元

Total cost **saving** with T&S B-0107 low-flow Pre-rinse Spray valve **¥ 65,079.04**
用天仕B-0107花洒喷阀一年节省**65,079.04元**

紧急洗眼装置

Emergency eyewash unit by Haws

Haws 紧急洗眼器

Laundry Room 洗衣房

Kitchen 厨房

INJURY REDUCTION

Inverted wash streams clear the eye by gently sweeping contaminants away from the eye interior and nasal cavity helping reduce further injury.

INCREASED COMFORT

Laminar flow eye/face wash streams provide even, consistent, predictable stream height for greater user comfort, encouraging use for the full 15-minute ANSI Z358.1 requirement.

减少伤害

反向的冲洗水流轻轻地将污染物从眼睛内部和鼻腔去除, 有助于减少二次伤害

增加舒适度

层状的水流提供均匀、一致、可预见的水流高度以提升使用者舒适度。可以让使用者持续冲洗15分钟, 达到 ANSI Z358.1 要求



Emergency Eyewash Units 紧急洗眼装置

AXION™

EW-7360B Wall Mounted Eye/Face Wash 冲淋、洗眼/脸两用龙头

- ABS green plastic eyewash heads with built-in 2.5 GPM (9.46 LPM) flow control
- Integral flip top dust covers automatically release with flow of water
- Round stainless steel receptor with chrome plated brass stay open ball valve, 1/2" IPS inlet and outlet, 1-1/4" IPS waste
- Universal emergency eyewash sign
- Includes "Test This Week" tag to record weekly testing record of emergency equipment
- Production location: Singapore



- ABS塑料洗眼头流量2.5GPM (9.46 LPM)
- 轻弹下顶部的防尘外壳可以自动释放出水流
- 圆形的不锈钢接水盆和镀铬的持开铜球阀, 1/2"IPS的进出水口, 1-1/4"IPS下水口
- 通用紧急洗眼标识
- 包含"Test This Week"标签可以记录下设备的每周检验记录
- 产地: 新加坡

EX-7930EW Combination Shower/Eye-face Wash 冲淋、洗眼/脸两用龙头

- Eye/face wash and valve assembly are assembled at the factory, and are fully water tested
- The 316 stainless steel ball valve guarantees excellent corrosion and wear resistance
- A filter is provided upstream of the eye-wash bowl
- Built-in stainless steel strainer
- Equipped with a patented AXION® MSR stainless steel shower head, an overall flow control distributes the water evenly
- Patented AXION® MSR stainless steel eye wash head with "inside out" flush mode that removes contaminants from the inside of the eye and nasal cavity, helping to reduce second damage
- Production location: Singapore
- Available in Asia



- 洗眼/脸头在工厂已预组装且都测过水
- 316不锈钢球阀保证卓越的耐腐蚀性和耐磨性
- 接水盘上游设有过滤器
- 内置不锈钢滤网
- 配有专利AXION® MSR不锈钢淋浴头, 保证出水均匀
- 专利AXION® MSR不锈钢洗眼头配有"自内向外"的冲洗模式, 可从眼睛内部和鼻腔中冲除异物, 有助于减少二次伤害
- 产地: 新加坡
- 亚洲销售

EW-7612 Swing Away Eyewash Unit 摆动洗眼装置

- Countertop mounted polished chrome plated brass eye/face wash unit with swing-away feature to activate
- Mounted on right side of sink
- Twin polished chrome plated brass anti-surge Soft-Flo heads, 1/4" IPS with 1.2 GPM (4.54 LPM) flow control
- Green polyethylene dust covers
- Supply: 1/2" O.D. slip joint
- Universal emergency eyewash sign
- Production location: United States
- 安装在工作台面上, 表面镀铬铜的洗眼/洗脸装置, 移动摇摆使用
- 安装在水槽右边
- 两个抛光镀铬铜件头部产生柔和水流, 1/4"IPS接头, 1.2 GPM (4.54 LPM)
- 绿色的聚乙烯防尘盖
- 提供: 1/2"O.D.的滑动连接
- 有通用的紧急洗眼标识
- 产地: 美国



EW-7612LH same as EW-7612 except mounted on left side of sink 与EW-7612相同, 除安装在水槽左边

EW-7611 Countertop Mounted Pull Down Eye/Face Wash Unit 工作台下拉式洗眼或洗脸设备

- Polished chrome plated brass eye/face wash swings forward to activate
- Twin Feather-Flo® ABS green plastic heads with built in 2.5 GPM (9.46 LPM) flow of control
- Integral flip top dust covers automatically release with flow of water
- Can be mounted on either right or left side of sink
- Supply: 1/2" O.D. slip joint
- Universal emergency eyewash sign
- Includes "Test This Week" tag to record weekly testing record of emergency equipment
- Production location: United States
- 抛光的镀铬铜件洗眼或洗脸设备, 通过摇摆方式使用
- 两个绿色的Twin Feather-Flo® ABS塑料洗眼头流量有2.5 GPM (9.46 LPM)
- 轻弹下顶部的防尘外壳可以自动释放出水流
- 可以安装在水槽左右任一边
- 提供: 1/2"O.D.的滑动连接
- 有通用的紧急洗眼标识
- 包括"Test This Week"标签可以记录下设备的每周检验记录
- 产地: 美国



EW-7656WC Recessed Wall Mounted Eye/Face Wash Unit 嵌壁式洗眼洗脸装置

- Barrier-free recessed stainless steel cabinet with satin finish has single-action pull down to activate
- Twin Feather-Flo® ABS green plastic heads with built in 2.5 GPM (9.46) flow of control
- Integral flip top dust covers automatically release with flow of water
- Stainless steel drain pan collects eyewash wastewater and directs it to waste within cabinet
- Supply: 1/2" IPS, Waste: 1-1/2" IPS
- Universal emergency eyewash sign
- Includes "Test This Week" tag to record weekly testing record of emergency equipment
- Production location: United States
- 无障碍凹式磨光不锈钢橱柜采用单一的下拉方式
- 两个绿色的Twin Feather-Flo® ABS塑料洗眼头流量有2.5 GPM (9.46 LPM)
- 轻弹下顶部的防尘外壳可以自动释放出水流
- 不锈钢排水面板会收集洗眼污水, 然后通过橱柜来直接排出
- 提供: 1/2"IPS连接; 污水出口处: 1-1/2"IPS连接
- 有通用的紧急洗眼标识
- 包括"Test This Week"标签可以记录下设备的每周检验记录
- 产地: 美国



equip
by T&S



Equip Products
Equip产品系列

Pre-Rinse Units and Accessories 预冲洗花洒装置及配件

equip

5PR-2S00-H (CQC认证型号: 同左) Equip Pre-Rinse Unit 预冲洗花洒装置

- Single hole deck-mounted pre-rinse unit
- Supplied with 1/2" in-line check valves
- 18"(457 mm) flexible inlets with 1/2" couplings
- Includes 6" (152 mm) wall bracket
- 5SV-H spray valve (4.5 GPM /17.0 LPM)
- Deck mounting hole I.D.: 38mm
- Production location: China

- 单孔台式预冲洗花洒装置
- 提供1/2"止回阀
- 18"(457mm)长的进水软管带有1/2"接头
- 包括6"(152mm)长的墙上托架
- 5SV-H喷阀(4.5GPM/17.0LPM)
- 台面安装孔直径: 38mm
- 产地: 中国



5PR-2S12-H (CQC认证型号: 5PR-2S12A-H) Equip Pre-Rinse Unit 预冲洗花洒装置

- Same as 5PR-2S00H except with 12" (305 mm) add-on faucet
- 5SV-H spray valve (4.5 GPM /17.0 LPM)
- Production location: China

- 跟5PR-2S00H相同, 除带12"(305mm)长的附加龙头
- 5SV-H喷阀(4.5GPM/17.0LPM)
- 产地: 中国



5PR-8W00-H Equip Pre-Rinse Unit 预冲洗花洒装置

- Faucet with 8" (203 mm) centers
- Built-in check valves
- 5SV-H spray valve (4.5 GPM /17.0 LPM)
- Inlet kit (B-0230-K) sold separately
- Includes 6" (152 mm) wall bracket
- Wall mounting holes I.D.: 25mmx2, clearance 203mm
- Production location: China
- Available with add-on faucet:

- 双孔墙出, 8"(203mm)间距龙头
- 内置止回阀
- 5SV-H喷阀(4.5GPM/17.0LPM)
- 配件包B-0230-K单独出售
- 配置6"(152mm)墙上托架
- 墙面或背板安装孔直径: 25mmx2, 两孔间距203mm
- 产地: 中国
- 可选配不同长度的附加龙头:



- 5PR-8W18-H 18" (457 mm) Add-On Faucet 附加龙头
- 5PR-8W14-H 14" (356 mm) Add-On Faucet 附加龙头
- 5PR-8W12-H 12" (305 mm) Add-On Faucet 附加龙头
- 5PR-8W10-H 10" (254 mm) Add-On Faucet 附加龙头
- 5PR-8W08-H 8" (203 mm) Add-On Faucet 附加龙头
- 5PR-8W06-H 6" (152 mm) Add-On Faucet 附加龙头

5PR-8D00-H Equip Pre-Rinse Unit 预冲洗花洒装置

- Faucet with 8" (203 mm) centers
- Built-in check valves
- 5SV-H spray valve (4.5 GPM /17.0 LPM)
- Inlet kit (B-0425-M) sold separately
- Includes 6" (152 mm) wall bracket
- Deck mounting holes I.D.: 25mmx2, clearance 203mm
- Production location: China
- Available with add-on faucet:

- 双孔台出, 8"(203mm)间距龙头
- 内置止回阀
- 5SV-H喷阀(4.5GPM/17.0LPM)
- 配件包(B-0425-M)单独出售
- 配置6"(152mm)墙上托架
- 台面安装孔直径: 25mmx2, 两孔间距203mm
- 产地: 中国
- 可选配不同长度的附加龙头:

- 5PR-8D18-H 18" (457 mm) Add-On Faucet 附加龙头
- 5PR-8D14-H 14" (356 mm) Add-On Faucet 附加龙头
- 5PR-8D12-H 12" (305 mm) Add-On Faucet 附加龙头
- 5PR-8D10-H 10" (254 mm) Add-On Faucet 附加龙头
- 5PR-8D08-H 8" (203 mm) Add-On Faucet 附加龙头
- 5PR-8D06-H 6" (152 mm) Add-On Faucet 附加龙头



Equip Add-On Faucets 附加龙头

- Add-on faucets with swing spouts for pre-rinse units
- 3/8" NPT female outlet, 3/8" NPT male inlet
- Production location: China
- Models available:

- 预冲洗花洒装置的附加龙头带有摆动式水嘴
- 3/8"NPT内螺纹出水口及3/8"NPT外螺纹进水口
- 产地: 中国
- 可选型号:

- 5AFL18 18" (457 mm) swing nozzle 摆动式水嘴
- 5AFL14 14" (356 mm) swing nozzle 摆动式水嘴
- 5AFL12 12" (305 mm) swing nozzle 摆动式水嘴
- 5AFL10 10" (254 mm) swing nozzle 摆动式水嘴
- 5AFL08 8" (203 mm) swing nozzle 摆动式水嘴
- 5AFL06 6" (152 mm) swing nozzle 摆动式水嘴
- 5AFL00 Faucet less nozzle 龙头没有水嘴



5HSE44 Equip Stainless Steel Hose 不锈钢软管

- 44" (1118 mm) length
- Stainless outer cover
- Polyurethane inner hose
- Production location: China
- Other lengths available:

- 44"(1118mm)长
- 外部不锈钢管
- 聚氨酯内管
- 产地: 中国
- 其他不同长度型号选择:

- 5HSE68 68" (1727 mm) hose 管子
- 5HSE84 84" (2134 mm) hose 管子
- 5HSE96 96" (2438 mm) hose 管子



Pre-Rinse Units and Accessories 预冲洗花洒装置及配件

equip

5MPH-8WLN-08 Equip Mini Pre-Rinse Unit 迷你预冲洗花洒装置

- Faucet with 8" (203 mm) centers
- Built-in check valves
- Inlet kit (B-0230-K) sold separately
- Includes 6" (152 mm) wall bracket
- 5SV spray valve (1.15 GPM /4.35 LPM)
- Overall height: 553 mm
- Wall mounting holes I.D.: 25mmx2, clearance 203mm
- Production location: China
- Available with add-on faucet:

- 双孔墙出, 8"(203mm)间距龙头
- 内置止回阀
- 配件包B-0230-K单独出售
- 配置6"(152mm)墙上托架
- 5SV喷阀流量(1.15GPM/4.35LPM)
- 总高: 553 mm
- 墙面或背板安装孔直径: 25mmx2, 两孔间距203mm
- 产地: 中国
- 可选配不同长度的附加龙头:



- 5MPH-8WLN-06 6" (152 mm) Add-On Faucet 附加龙头

5MPH-2SLN-08 Equip Pre-Rinse Unit 迷你预冲洗花洒装置

- Single hole deck-mounted pre-rinse unit
- Supplied with 1/2" BSPP check valves
- 18" (457 mm) stainless steel supply hoses
- Includes 6" (152 mm) wall bracket
- 5SV spray valve (1.15 GPM /4.35 LPM)
- Overall height: 628 mm
- Deck mounting hole I.D.: 38mm
- Production location: China
- Available with add-on faucet:

- 单孔台式预冲洗花洒装置
- 提供1/2"BSPP止回阀
- 18"(457mm)长的不锈钢进水软管
- 包括6"(152mm)长的墙上托架
- 5SV喷阀流量(1.15GPM/4.35LPM)
- 总高: 628 mm
- 台面安装孔直径: 38mm
- 产地: 中国
- 可选配不同长度的附加龙头:



- 5MPH-2SLN-06 6" (152 mm) Add-On Faucet 附加龙头

5SV Equip Spray Valve 花洒喷头

- 1.15 GPM (4.35 LPM) spray valve
- Production location: China
- Available spray valve:

- 1.15 GPM(4.35LPM)喷阀
- 产地: 中国
- 喷阀选项:

- 5SV-H 4.50 GPM (17.03 LPM)
- 5SV-C 1.20 GPM (4.54 LPM)



5SV-WH Equip Spray Valve 花洒喷头

- 4.50 GPM (17.03 LPM) spray valve
- Heat resistant handle and 1/2" NPT female inlet
- Production location: China

- 4.50 GPM(17.03 LPM)喷阀
- 隔热手柄及1/2"NPT内螺纹进水口
- 产地: 中国



013716-40 Wall Bracket Assembly 墙出支架

- 6" (152 mm) wall bracket assembly
- Production location: China
- Available length:

- 6"(152mm)墙装支架
- 产地: 中国
- 可选长度:

- 014043-40 12"(305 mm)



014068-45 PRU Spring 花洒弹簧

- Overhead spring for PRU
- Production location: China

- 预冲洗花洒高架弹簧
- 产地: 中国



5F-1SLX05 (CQC认证型号: 5F-1SLX05A)
Equip Single Pantry Faucet
台式单柄厨房龙头

- Single supply deck-mounted faucet with 5-9/16" (141 mm) swivel gooseneck
- 14-13/16" (376 mm) height
- 9-9/16" (242 mm) clearance from aerator to deck
- Deck mounting hole: 25mm
- Production location: China



- 单孔台式, 配备5-9/16"(141mm)摆动鹅颈管
- 14-13/16"(376mm)高度
- 从起泡器到台面的距离为9-9/16"(242mm)
- 台面开孔直径: 25mm
- 产地: 中国

5F-1SLX10 (CQC认证型号: 5F-1SLX10A)
Equip Single Pantry Faucet
台式单柄厨房龙头

- Single supply deck-mounted faucet with 10" (254 mm) swivel nozzle
- Deck mounting holes: 25mm
- Production location: China



- 单孔台式, 配备10"(254mm)摆动式水嘴
- 台面开孔直径: 25mm
- 产地: 中国

5F-1WLB05C
Equip Single Pantry Faucet
台式单柄厨房龙头

- Single supply wall mount faucet
- Ceramic cartridge & lever handle
- 5-13/16" (148mm) swivel gooseneck
- 1/2" BSPP male inlet
- Wall mounting holes: 25mm
- Production location: China



- 单孔墙出厨房龙头
- 陶瓷阀芯和一字手柄
- 5-13/16"(148mm)间距摇摆鹅颈
- 1/2"外螺纹黄铜进水口
- 墙面或背板开孔直径: 25mm
- 产地: 中国

5F-2SLX10 (CQC认证型号: 5F-2SLX10A)
Equip Faucet
台式样混水厨房龙头

- Single hole deck-mounted faucet with 10" (254 mm) swivel nozzle
- 18" (457 mm) flexible inlets with 1/2" couplings
- Production location: China



- 单孔台式, 配备10"(254mm)摆动式水嘴
- 18"(457mm)长的进水管带有1/2"的连接头
- 产地: 中国

5F-4DLS05 (CQC认证型号: 5F-4DLS05A)
Equip Faucet
台式混水厨房龙头

- Deck-mounted faucet with 5-9/16" (141 mm) swivel gooseneck
- 14" (356 mm) height
- 8-3/4" (222 mm) clearance from aerator to deck
- Deck mounting holes: 25mmx2, clearance 102mm
- Production location: China



- 台式, 配备5-9/16"(141mm)摆动鹅颈管
- 14"(356mm)高度
- 从起泡器到台面的距离为8-3/4"(222mm)
- 台面开孔直径: 25mmx2, 两孔间距102mm
- 产地: 中国

5F-4DLS10 (CQC认证型号: 5F-4DLS10A)
Equip Faucet
台式混水厨房龙头

- Deck-mounted faucet with 10" (254 mm) swivel nozzle
- Ceramic Cartridges and lever handles
- Deck mounting holes: 25mmx2, clearance 102mm
- Production location: China



- 台式龙头配备10"(254mm)摆动式水嘴
- 陶瓷阀芯, 一字型手柄
- 台面开孔直径: 25mmx2, 两孔间距102mm
- 产地: 中国

5F-4DWS05
Equip Faucet
台式混水厨房龙头

- Same as 5F-4DLS05 except with wrist handle
- Production location: China



- 与5F-4DLS05相同, 除使用腕式手柄
- 产地: 中国

5F-4DWS10
Equip Faucet
台式混水厨房龙头

- Same as 5F-4DLS10 except with wrist handle
- Production location: China



- 与5F-4DLS10相同, 除使用腕式手柄
- 产地: 中国

5F-4WLX05
4" Wall Mounted Faucet
墙式混水厨房龙头

- Faucet with 4" (102 mm) centers
- Quarter-turn ceramic cartridges
- 5/9/16" (141 mm) Swivel gooseneck & 2.2 GPM (8.3 LPM) aerator
- Lever handles with color coded screws
- Wall mounting holes: 25mmx2, clearance 102mm
- Production location: China



- 4"(102mm)中心距
- 配备90°旋转陶瓷阀芯
- 5-9/16"(141mm)摇摆鹅颈管和2.2GPM(8.3LPM)起泡器
- 一字型手柄, 冷热标明
- 墙面或背板开孔直径: 25mmx2, 两孔间距102mm
- 产地: 中国

5F-6DLS05 (CQC认证型号: 5F-6DLS05A)
Equip Faucet
台式混水厨房龙头

- 6" (152mm) centers mixing faucet
- 5-9/16" (141 mm) swivel gooseneck
- Deck mounting holes: 25mmx2, clearance 152mm
- Production location: China



- 间距为6"(152mm)台出混水龙头
- 5-9/16"(141mm)摇摆鹅颈管
- 台面开孔直径: 25mmx2, 两孔间距152mm
- 产地: 中国

5F-6DLS10 (CQC认证型号: 5F-6DLS10A)
Equip Faucet
台式混水厨房龙头

- 6" (152mm) centers mixing faucet
- 10" (254mm) Nozzle & 1/2" NPT female inlets
- Deck mounting holes: 25mmx2, clearance 152mm
- Production location: China



- 间距为6"(152mm)台出混水龙头
- 水嘴长10"(254mm), 1/2"NPT内螺纹进水口
- 台面开孔直径: 25mmx2, 两孔间距152mm
- 产地: 中国

5F-7DLS05
Equip Faucet
台式混水厨房龙头

- 7" (178 mm) centers mixing faucet
- 5-9/16" (141 mm) swivel gooseneck
- Deck mounting holes: 25mmx2, clearance 178mm
- Production location: China



- 间距为7"(178mm)台出混水龙头
- 5-9/16"(141mm)摇摆鹅颈, 1/2"NPT内螺纹进水口
- 台面开孔直径: 25mmx2, 两孔间距178mm
- 产地: 中国

5F-7DLS10
Equip Faucet
台式混水厨房龙头

- 7" (178 mm) Deck mount
- 10" (254 mm) Nozzle, 1/2" NPT female inlets
- Deck mounting holes: 25mmx2, clearance 178mm
- Production location: China



- 间距为7"(178mm)台出混水龙头
- 水嘴长10"(254mm), 1/2"NPT内螺纹进水口
- 台面开孔直径: 25mmx2, 两孔间距178mm
- 产地: 中国

5F-8DLS05 (CQC认证型号: 5F-8DLS05A)
Equip Faucet
台式混水厨房龙头

- 5-9/16" (141 mm) swivel gooseneck
- 14" (355 mm) height
- 8-3/4" (222mm) clearance from aerator to deck
- Deck mounting holes: 25mmx2, clearance 203mm
- Production location: China



- 5-9/16"(141mm)摇摆式鹅颈
- 龙头高度为14"(355mm)
- 起泡器到台面距离8-3/4"(222mm)
- 台面开孔直径: 25mmx2, 两孔间距203mm
- 产地: 中国

5F-8DWS05 (CQC认证型号: 5F-8DWS05A)
Equip Faucet
台式混水厨房龙头

- Same as 5F-8DLS05 except with wrist handle
- Production location: China



- 与5F-8DLS05相同, 除使用腕式手柄
- 产地: 中国

5F-8DLS10 (CQC认证型号: 5F-8DLS10A)
Equip Faucet
台式混水厨房龙头

- 8" (203mm) centers mixing faucet
- 10" (254mm) Nozzle
- Deck mounting holes: 25mmx2, clearance 203mm
- Production location: China



- 间距为8"(203mm)台出混水龙头
- 水嘴长10"(254mm)
- 台面开孔直径: 25mmx2, 两孔间距203mm
- 产地: 中国

5F-8DWS10 (CQC认证型号: 5F-8DWS10A)
Equip Faucet
台式混水厨房龙头

- Same as 5F-8DLS10 except with wrist handle
- Production location: China



- 与5F-8DLS10相同, 除使用腕式手柄
- 产地: 中国

5F-8WLX05
Equip Faucet
墙式混水厨房龙头

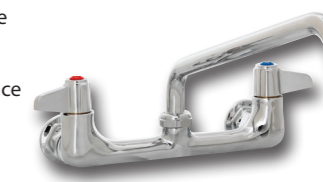
- Wall-mounted faucet with 8" (203 mm) centers and 5-9/16" (141 mm) swivel gooseneck
- Inlet kit (B-0230-K) sold separately
- 11-3/8" (289 mm) height
- Wall mounting holes: 25mmx2, clearance 203mm
- Production location: China



- 墙式龙头间距8"(203mm)及长度为5-9/16"(141mm)摇摆式鹅颈
- 需另配进水口配件(B-0230-K)
- 高度为11-3/8"(289mm)
- 墙面或背板开孔直径: 25mmx2, 两孔间距203mm
- 产地: 中国

5F-8WLX10
Equip Faucet
墙式混水厨房龙头

- Wall-mounted faucet with 8" (203 mm) centers and 10" (254 mm) swivel nozzle
- Inlet kit (B-0230-K) sold separately
- 5-7/16" (139 mm) height
- Wall mounting holes: 25mmx2, clearance 203mm
- Production location: China



- 墙式龙头间距8"(203mm)及长度为10"(254mm)摇摆式水嘴
- 需另配进水口配件(B-0230-K)
- 高度为5-7/16"(139mm)
- 墙面或背板开孔直径: 25mmx2, 两孔间距203mm



任意搭配的龙头底座与水嘴
欲知产品详情, 请咨询天仕客服



5F-1SLX00
Single Panty Faucet
台出单孔厨房龙头

- Single supply, deck-mounted
- Lever handle
- Deck mounting hole: 25mm

- 台出单孔
- 一字型手柄
- 台面开孔直径: 25mm



5F-1WLB00
Single Panty Faucet
墙出单孔厨房龙头

- Single supply, Wall-mounted
- Lever handle
- Wall mounting hole: 25mm

- 墙出单孔
- 一字型手柄
- 墙面或背板开孔直径: 25mm



5F-2SLX00
Double Panty Faucet
冷热厨房龙头

- Double supplies, deck-mounted
- Lever handles
- Deck mounting hole: 35mm

- 台出单孔冷热混水
- 一字型手柄
- 台面开孔直径: 35mm



5F-4DLS00
Deck Mixing Faucet
台出混水龙头

- Deck-mounted mixing faucet
- Lever handles
- 4"(102mm) centers
- Deck mounting holes: 25mmx2

- 台出双孔混水龙头
- 一字型手柄
- 中心间距4" (102mm)
- 台面开孔直径: 25mmx2



5F-4DWS00
Deck Mixing Faucet
台出混水龙头

- Deck-mounted mixing faucet
- Wrist handles
- 4"(102mm) centers
- Deck mounting holes: 25mmx2

- 台出双孔混水龙头
- 腕式型手柄
- 中心间距4" (102mm)
- 台面开孔直径: 25mmx2

Swing Nozzle
摇摆式水嘴



5SP-06 6" (152mm)

5F-1SLX06



5SP-08 8" (203mm)

5F-1SLX08



5SP-10 10" (254mm)

5F-1SLX10



5SP-12 12" (305mm)

5F-1SLX12



5SP-14 14" (356mm)

5F-1SLX14



5SP-18 18" (457mm)

5F-1SLX18



Double Joint Nozzle
双层叠加水嘴



5DJ-18 18" (457mm)



Swivel Gooseneck
摇摆式鹅颈管



5SP-05 5-1/2" (140mm)

5F-1SLX05



5SP-09 9" (228mm)

5F-1SLX09



5SP-05C 5-13/16" (148mm)



5F-1WLB05C

5F-2SLX06

5F-4DLS06

5F-4DWS06

5F-2SLX08

5F-4DLS08

5F-4DWS08

5F-2SLX10

5F-4DLS10

5F-4DWS10

5F-2SLX12

5F-4DLS12

5F-4DWS12

5F-2SLX14

5F-4DLS14

5F-4DWS14

5F-2SLX18

5F-4DLS18

5F-4DWS18



5F-2SLX05

5F-4DLS05

5F-4DWS05

5F-2SLX09

5F-4DLS09

5F-4DWS09





任意搭配龙头底座与水嘴
欲知产品详情, 请咨询天仕客服

Swing Nozzle
摇摆式水嘴



- 5SP-06** 6" (152mm)
- 5SP-08** 8" (203mm)
- 5SP-10** 10" (254mm)
- 5SP-12** 12" (305mm)
- 5SP-14** 14" (356mm)
- 5SP-18** 18" (457mm)

Double Joint Nozzle
双层叠加水嘴



- 5DJ-18** 18" (457mm)

Swivel Gooseneck
摇摆式鹅颈管



- 5SP-05** 5-1/2" (140mm)
- 5SP-09** 9" (228mm)
- 5SP-05C** 5-13/16" (148mm)



5F-4WLX00
Wall Mixing Faucet
墙出厨房混水龙头

- Wall-mounted mixing faucet
- Lever handles
- 4"(102mm) centers
- Wall mounting holes: 25mmx2
- 墙出双孔混水龙头
- 一字型手柄
- 中心间距4" (102mm)
- 墙面或背板开孔直径: 25mmx2



5F-6DLS00
Deck Mixing Faucet
台出混水龙头

- Deck-mounted mixing faucet
- Lever handles
- 6"(152mm) centers
- Deck mounting holes: 25mmx2
- 台出双孔混水龙头
- 一字型手柄
- 中心间距6" (152mm)
- 台面开孔直径: 25mmx2



5F-7DLS00
Deck Mixing Faucet
台出混水龙头

- Deck-mounted mixing faucet
- Lever handles
- 7"(178mm) centers
- Deck mounting holes: 25mmx2
- 台出双孔混水龙头
- 一字型手柄
- 中心间距7" (178mm)
- 台面开孔直径: 25mmx2



5F-8DLS00
Deck Mixing Faucet
台出混水龙头

- Deck-mounted mixing faucet
- Lever handles
- 8"(203mm) centers
- Deck mounting holes: 25mmx2
- 台出双孔混水龙头
- 一字型手柄
- 中心间距8" (203mm)
- 台面开孔直径: 25mmx2



5F-8DWS00
Deck Mixing Faucet
台出混水龙头

- Deck-mounted mixing faucet
- Wrist handles
- 8"(203mm) centers
- Deck mounting holes: 25mmx2
- 台出双孔混水龙头
- 腕式型手柄
- 中心间距8" (203mm)
- 台面开孔直径: 25mmx2



任意搭配龙头底座与水嘴
欲知产品详情, 请咨询天仕客服

Swing Nozzle 摇摆式水嘴	5SP-06 6" (152mm)	5F-8WLX06	5F-8WWX06
	5SP-08 8" (203mm)	5F-8WLX08	5F-8WWX08
	5SP-10 10" (254mm)	5F-8WLX10	5F-8WWX10
	5SP-12 12" (305mm)	5F-8WLX12	5F-8WWX12
	5SP-14 14" (356mm)	5F-8WLX14	5F-8WWX14
	5SP-18 18" (457mm)	5F-8WLX18	5F-8WWX18
Double Joint Nozzle 双层叠加水嘴	5DJ-18 18" (457mm)		
Swivel Gooseneck 摇摆式鹅颈管	5SP-05 5-1/2" (140mm)	5F-8WLX05	5F-8WWX05
	5SP-09 9" (228mm)	5F-8WLX09	5F-8WWX09
	5SP-05C 5-13/16" (148mm)		



5F-8WLX00
Wall Mixing Faucet
墙出混水龙头

- Wall-mounted mixing faucet
- Lever handles
- 8"(203mm) centers
- Wall mounting holes: 25mmx2
- 墙出混水龙头
- 一字手柄
- 中心间距8" (203mm)
- 背板或墙面开孔直径: 25mmx2



5F-8WWX00
Wall Mixing Faucet
墙出混水龙头

- Wall-mounted mixing faucet
- Wrist handles
- 8"(203mm) centers
- Wall mounting holes: 25mmx2
- 墙出混水龙头
- 腕式手柄
- 中心间距8" (203mm)
- 背板或墙面开孔直径: 25mmx2

Standard - Goosenecks/Nozzles
标准型-鹅颈/水嘴

Swing Nozzles
摆动式水嘴

- 3/4-27 Laminar outlet, Available:
- 3/4-27 平流出水口, 可选择:
- 5SP-18 18" (457 mm) swing nozzle 摆动式水嘴
- 5SP-16 16" (406 mm) swing nozzle 摆动式水嘴
- 5SP-14 14" (356 mm) swing nozzle 摆动式水嘴
- 5SP-12 12" (305 mm) swing nozzle 摆动式水嘴
- 5SP-10 10" (254 mm) swing nozzle 摆动式水嘴
- 5SP-08 8" (203 mm) swing nozzle 摆动式水嘴
- 5SP-06 6" (152 mm) swing nozzle 摆动式水嘴
- Production location: China
- 产地: 中国



5SP-05
Swivel Gooseneck
摇摆鹅颈管

- 3/4-27 Laminar outlet
- 5-13/16" (147 mm) clearance
- 11-1/16" (281 mm) height
- Production location: China



- 3/4-27平流水嘴
- 出水口到台面距离5-13/16"(147mm)
- 总高11-1/16"(281mm)
- 产地: 中国

5SP-05C
Swivel Gooseneck
摇摆鹅颈管

- 3/4-27 UN Laminar outlet
- 5-9/16" (142 mm) clearance
- 9 5/8" (245 mm) height
- Production location: China



- 3/4-27 平流水嘴
- 出水口到台面距离5-9/16"(142mm)
- 总高9-5/8"(245mm)
- 产地: 中国

5SP-09
Swivel Gooseneck
摇摆鹅颈管

- 3/4-27 UN Laminar outlet
- 7" (178 mm) clearance
- 14" (355 mm) height
- Production location: China



- 3/4-27 平流水嘴
- 出水口到台面距离7"(178mm)
- 总高14"(355mm)
- 产地: 中国

5SP-09

5DJ-18
Double Joint Swing Nozzle
双层叠加摇摆水嘴

- 18" (457 mm) double joint nozzle
- Production location: China



- 18" (457 mm) 双层叠加水嘴
- 产地: 中国

5DJ-18

Ceramic Cartridge Assembly
Equip系列陶瓷阀芯

- Hot Cartridge 013787-45 RTC
- Cold Cartridge 013788-45 LTC
- Production location: China



- 热水阀芯, 013787-45 右旋
- 冷水阀芯, 013788-45 左旋
- 产地: 中国

5-HDL-L
Equip Lever Handle Kit
Equip一字型手柄和配件

- Includes one handle and two color coded screws (hot and cold)
- Production location: China



- 包括1个手柄和2个标色螺丝 (冷热水)
- 产地: 中国

5-HDL-W
Equip Wrist Handle Kit
Equip腕式手柄和配件

- Includes one handle and two color coded screws (hot and cold)
- Production location: China



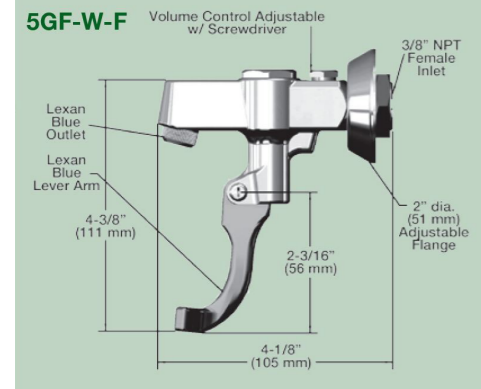
- 包括1个手柄和2个标色螺丝 (冷热水)
- 产地: 中国

5GF-W-F
Wall Mount Glass Filler
墙出经济款推杯龙头

- Push back arm design
- 3/8" NPT female inlet
- 2" (51 mm) diameter adjustable slip flange
- Blue self-closing lexan arm
- Blue lexan outlet
- Volume control adjustable with screwdriver
- Production location: China



- 后推式手柄设计
- 3/8"NPT内螺纹进水口
- 直径2"(51mm)可调节滑动法兰
- 蓝色自动关闭设计的聚碳酸酯手柄
- 蓝色聚碳酸酯出水口
- 螺丝刀可以直接调节水流量
- 产地: 中国

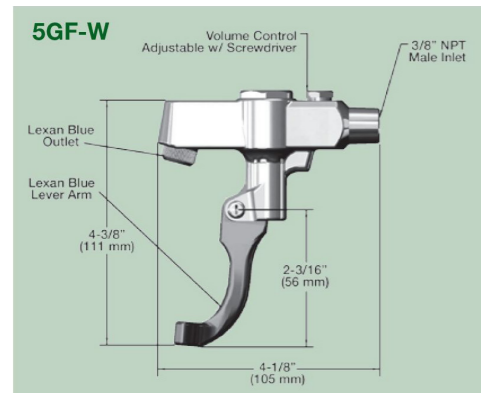


5GF-W
Wall Mount Glass Filler
墙出经济款推杯龙头

- Push back arm design
- 3/8" NPT male inlet
- Blue self-closing lexan arm
- Blue lexan outlet
- Volume control adjustable with screwdriver
- Production location: China



- 后推式手柄设计
- 3/8" NPT外螺纹进水口
- 蓝色的自动关闭设计的Lexan手柄
- 蓝色Lexan出水口
- 螺丝刀可以直接调节水流量
- 产地: 中国



5GF-8P
Pedestal Deck Mount Glass Filler
台出经济款推杯龙头

- Push back design, self-closing lexan arm
- 1/2" NPT male shank
- 2" (51 mm) diameter adjustable flange
- Volume control adjustable with screwdriver
- Height from desk 238mm
- Deck mounting hole: 25mm
- Production location: China



- 蓝色后推式手柄, 自动关闭设计
- 1/2"NPT外螺纹连接杆
- 直径为2"(51mm)可调节法兰
- 螺丝刀可以直接调节水流量
- 离桌面高度238mm
- 台面开孔直径: 25mm
- 产地: 中国

5GF-16P Same with 5GF-8P except height 440mm
与5GF-8P相同, 除了总高度为440mm

5GF-8P-WS
Glass Filler Water Station
经济款注水站

- Pedestal glass filler with retro design
- 18 gauge stainless steel drip pan
- 1/4" tailpiece for copper tubing to fit 1/4" O.D. tubing
- Also available to fit 3/8" and 1/2" O.D. copper tubing
- 1/2" NPT male shank
- 2" diameter adjustable flange
- Blue self-closing lexan arm
- Blue lexan outlet
- Volume control adjustable with screwdriver
- Stainless steel screws for mounting included
- Suggested cut-out: 10-1/2" x 5"
- **5GF-16P-WS** available
- Production location: China



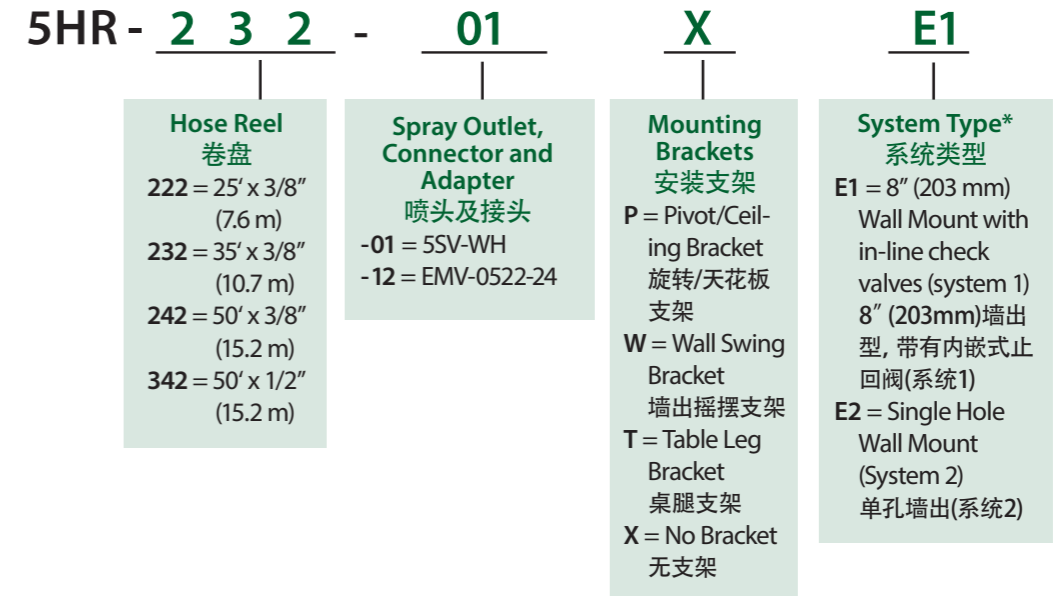
- 台式注水站
- 不锈钢接水盘
- 1/2"NPT外螺纹连接杆
- 直径为2"(51mm)的可调式法兰
- 蓝色的自动关闭设计的聚碳酸酯手柄
- 蓝色的聚碳酸酯出水口
- 螺丝刀可以直接调节水流量
- 配置安装用不锈钢螺丝
- 建议台面开孔尺寸为: 10-1/2" x 5"(267mm x 127mm)
- 也有**5GF-16P-WS**供选择
- 产地: 中国

5GF-RK
Glass Filler Repair Kit (not shown)
经济款推杯龙头维修配件

- Replacement parts kit includes:
- (2) Springs
 - (1) Handle screw
 - (1) Handle nut
 - (2) Stem packings
 - (2) 'O'-rings
 - (2) Bonnet washers
 - (2) Seat washers
 - (2) Outlet washers
 - (1) Outlet tip
 - (1) Lever arm
 - (1) Silicon grease tube

- 经济款推杯龙头维修配件
可更换配件包括:
- 2个弹簧, 2个底座密封圈
 - 1个手柄螺丝, 2个出水口垫圈
 - 1个手柄螺母, 1个出水罩
 - 2个底座垫片, 1个手柄
 - 2个O型圈, 1个硅油脂管
 - 2个阀帽垫圈

Smart Model Key for Equip Complete Hose Reel Systems
Equip洗地龙头系统命名规则



*System Type: 系统类型



Model (for example): 型号 (示例)

5HR-232-01WE1 5HR-242-01XE2

Spray Outlet, Connectors and Adapters 喷头及接头



Available Models: 在售型号

Equip Hose Reel Systems Models 洗地龙头系统型号	
5HR-232-01WE1	5HR-242-01WE1
5HR-232-01WE2	5HR-242-01WE2
5HR-232-01XE1	5HR-242-01XE1
5HR-232-01XE2	5HR-242-01XE2

* Production location: China 产地: 中国

Equip Open Hose Reels FEATURES: Equip开放式洗地龙头特性:

Adjustable Hose Stop 可以调整软管止动块



Guide Arm 导向臂

- 4-position orientation
- Mounted independently
- Easily adjustable
- Thick steel structure
- Extra ribs for strength

- 4个方向定位
- 可独立安装
- 容易调整
- 厚的不锈钢结构
- 加强筋提高强度

Main Spring 主弹簧

- Proprietary spring alloy
- Exceeds 25K pull test
- Easy and safe service
- 采用弹簧合金
- 超过25K的拉力测试
- 轻松及安全的服务

Hose 管子

- 3/8" I.D. EPDM tube
- Black SBR rubber
- 35' (10.7 m) and 50' (15.2 m) hose lengths
- 225 PSI (15 kg) max.
- 140°F (60 °C) maximum temperature

- 3/8" I.D.的EPDM管子
- 黑色的SBR橡胶
- 35'(10.7m)和50'(15.2m)的管子长度
- 最大水压225PSI (15 Kg)
- 最大温度140°F (60°C)

Reel and Base 卷盘和底座

- Powder coated steel
- Thick steel structure
- Extra ribs for strength
- 黑色哑光卷盘
- 厚钢结构
- 加强筋提高强度

Heavy-Duty Brass Swivel 结实的铜制旋转接头

- Outboard of reel
- Easy 'O'-Ring service
- 'O'-Ring: Buna-N nitrile and two nylon wearing rings
- 露在卷盘外
- 有O-Ring保护
- O-Ring: 丁纳橡胶和两个尼龙耐磨垫圈



5HR-232-12-A 5HR-242-12-A

- Includes EMV-0522-24 Front Trigger Water Gun
- 喷枪为EMV-0522-24



5HR-232-01-A 5HR-242-01-A

- Includes 5SV-WH Spray Valve
- 喷阀为5SV-WH

Reel 外壳	Hose Length (inch) 软管长度 (尺)	Hose Length (m) 软管长度 (米)	Epoxy Coated Steel Finish 环氧外壳	
			Spray Valve 花洒喷头	Water Gun 水枪
Open 开放式	35'	10.7m	5HR-232-01-A	5HR-232-12-A
	50'	15m	5HR-242-01-A	5HR-242-12-A

* Production location: China 产地: 中国

CQC认证



中国质量认证中心(CQC)是经中央机构编制委员会批准,由国家质量监督检验检疫总局设立,委托国家认监委管理的国家级认证机构。CQC是中国开展质量认证工作最早、最大和最权威的认证机构,几十年来积累了丰富的国际质量认证工作经验,各项业务均成果卓著,认证客户数量居全国认证机构的首位、全球认证机构的前列。

CQC标志认证是中国质量认证中心开展的自愿性产品认证业务之一,以加施CQC标志的方式表明产品符合相关的质量、安全、性能、电磁兼容等认证要求,认证范围涉及机械设备、电力设备、电器、电子产品、纺织品、建材等500多种产品。CQC标志认证重点关注安全、电磁兼容、性能、有害物质限量(RoHS)等直接反映产品质量和影响消费者人身和财产安全的指标,旨在维护消费者利益,促进提高产品质量,增强国内企业的国际竞争力。

CQC认证产品清单

星盆龙头

以下产品除5PR-2S00-H, 5PR-2S12A-H喷阀外, 60PSI下流量均为2.2GPM

5F-1SLX05A	5F-2SLX05A	5F-4DLS05A
5F-1SLX05CA	5F-2SLX05CA	5F-4DLS05CA
5F-1SLX08A	5F-2SLX08A	5F-4DLS08A
5F-1SLX10A	5F-2SLX10A	5F-4DLS10A
5F-1SLX12A	5F-2SLX12A	5F-4DLS12A
5F-6DLS05A	5F-8DLS05A	5F-8DWS05A
5F-6DLS05CA	5F-8DLS05CA	5F-8DWS05CA
5F-6DLS08A	5F-8DLS08A	5F-8DWS08A
5F-6DLS10A	5F-8DLS10A	5F-8DWS10A
5F-6DLS12A	5F-8DLS12A	5F-8DWS12A

花洒

- 5PR-2S00-H
- 5PR-2S12A-H

感应龙头

- CEF-1DG
- CEF-1DS
- CEF-4DS
- CEF-1DG-ST
- CEF-1DS-ST
- CEF-4DS-ST

*CQC节水节能认证有助于您在参与政府、或事业单位项目竞标中获得加分。

CQC中国质量认证中心官网: <http://www.cqc.com.cn/www/chinese/zlq/jncpzfcg/jncpzfcgqd/>

Model 型号	Page 页数	Model 型号	Page 页数	Model 型号	Page 页数	Model 型号	Page 页数	Model 型号	Page 页数	Model 型号	Page 页数	Model 型号	Page 页数
B-0113-B	2	B-0255	9	EC-3100	16	5PR-8D00-H	33	5F-8DLS06	40	5F-6DLS05A	46		
B-0113-ADF12-B	2	B-0208	9	EC-3101	16	5PR-8D18-H	33	5F-8DLS08	40	5F-6DLS05CA	46		
B-0113-12-CRB8P	2	B-0305	9	EC-3102	16	5PR-8D14-H	33	5F-8DLS10	40	5F-6DLS08A	46		
B-0133-B	2	B-0222	10	EC-3103	16	5PR-8D12-H	33	5F-8DLS12	40	5F-6DLS10A	46		
B-0133-ADF12-B	2	B-0220-060X	10	EC-3100-LF22-SB	16	5PR-8D10-H	33	5F-8DLS14	40	5F-6DLS12A	46		
B-0121	3	B-0220-061X	10	EC-3142	17	5PR-8D08-H	33	5F-8DLS18	40	5F-8DLS05A	46		
B-0123-B	3	B-0221	10	EC-3132	17	5PR-8D06-H	33	5F-8DLS05	40	5F-8DLS05CA	46		
B-2285-B	3	B-0220	10	EC-3130	17	5AFL18	33	5F-8DLS09	40	5F-8DLS08A	46		
B-2338	3	B-0247	10	B-2730	18	5AFL14	33	5F-8DWS06	40	5F-8DLS10A	46		
B-0156	3	B-0246	10	B-2742	18	5AFL12	33	5F-8DWS08	40	5F-8DLS12A	46		
B-0044-H2A	3	B-0245	10	B-2743	18	5AFL10	33	5F-8DWS10	40	5F-8DWS05A	46		
MPY-2DLN-06	4	B-0320	10	013842-45	18	5AFL08	33	5F-8DWS12	40	5F-8DWS05CA	46		
MPZ-2DLN-08	4	B-0228	10	B-0712	18	5AFL06	33	5F-8DWS14	40	5F-8DWS08A	46		
MPZ-4DLN-06	4	B-0227	10	B-0712-PA	18	5AFL00	33	5F-8DWS18	40	5F-8DWS10A	46		
B-0107	5	B-0226	10	B-0805	18	5HSE44	33	5F-8DWS05	40	5F-8DWS12A	46		
B-0107-C	5	B-0225	10	B-2711	18	5HSE68	33	5F-8DWS09	40	5PR-2S12A-H	46		
B-0107-J	5	B-2501	10	B-0715	19	5HSE84	33	5F-8WXL06	41				
B-0109-01	5	B-0325	10	B-0669-RGH	19	5HSE96	33	5F-8WXL08	41				
002711-40NS	5	B-0232	10	B-0672-CR-RGH	19	5MPH-8WLN-08	34	5F-8WXL10	41				
002712-40NS	5	B-2342	10	B-0665-BSTR	19	5MPH-8WLN-06	34	5F-8WXL12	41				
002987-40	5	B-0231	10	B-0520	20	5MPH-2SLN-08	34	5F-8WXL14	41				
000888-45	5	B-0230	10	B-0502	20	5MPH-2SLN-06	34	5F-8WXL18	41				
B-10K	5	B-0267	10	B-0507	20	5SV	34	5F-8WXL05	41				
018200-40	5	B-0266	10	B-2464	20	5SV-H	34	5F-8WXL09	41				
B-TEE-RGD	5	B-0265	10	B-0508-01	20	5SV-C	34	5F-8WWW06	41				
B-0232-WH4	6	B-0331	10	B-0509	20	5SV-WH	34	5F-8WWW08	41				
059X	7	B-1105	11	B-0507-509PDL	20	013716-40	34	5F-8WWW10	41				
060X	7	B-1106	11	B-1210	21	014043-40	34	5F-8WWW12	41				
061X	7	B-1107	11	B-1210-01	21	014068-45	34	5F-8WWW14	41				
062X	7	B-1108	11	B-1230	21	5F-1SLX06	37	5F-8WWW18	41				
063X	7	B-1135	11	B-2282-01	21	5F-1SLX08	37	5F-8WWW05	41				
064X	7	B-1145	11	B-2282	21	5F-1SLX10	37	5F-8WWWX09	41				
065X	7	B-1100	11	006678-45	21	5F-1SLX12	37	5SP-18	42				
131X	7	B-1101	11	010387-45	22	5F-1SLX14	37	5SP-16	42				
132X	7	B-1102	11	B-3940	22	5F-1SLX18	37	5SP-14	42				
133X	7	B-1103	11	B-3940-01	22	5F-1SLX05	37	5SP-12	42				
134X	7	B-1130	11	B-3942	22	5F-1SLX09	37	5SP-10	42				
135X	7	B-1140	11	B-3942-01	22	5F-1WLB05C	37	5SP-08	42				
136X	7	B-1110	12	B-3950	22	5F-2SLX06	38	5SP-06	42				
OCS6	7	B-1111	12	B-3950-01	22	5F-2SLX08	38	5SP-05	42				
OCS8	7	B-1112	12	B-3952	22	5F-2SLX10	38	5SP-05C	42				
066X	7	B-1113	12	B-3952-01	22	5F-2SLX12	38	5SP-09	42				
067X	7	B-1131	12	B-0290	22	5F-2SLX14	38	5DJ-18	42				
068X	7	B-1141	12	B-0293	22	5F-2SLX18	38	013787-45	42				
069X	7	B-1115	12	B-0296	22	5F-2SLX05	38	013788-45	42				
119X	7	B-1116	12	B-3992	22	5F-2SLX09	38	5HDL-L	42				
120X	7	B-1117	12	B-0590	23	5F-4DLS06	38	5HDL-W	42				
122X	7	B-1118	12	B-0592	23	5F-4DLS08	38	014061-40	42				
123X	7	B-1136	12	B-0598	23	5F-4DLS10	38	5GF-W-F	43				
125X	7	B-1146	12	B-0605	23	5F-4DLS12	38	5GF-W	43				
126X	7	B-1120	12	B-0610	23	5F-4DLS14	38	5GF-8P	43				
127X	7	B-1121	12	B-7222-C01XS1E	26	5F-4DLS18	38	5GF-8P-WS	43				
129X	7	B-1122	12	B-7232-U01XS1E	26	5F-4DLS05	38	5GF-16P	43				
130X	7	B-1123	12	B-2339	26	5F-4DLS09	38	5GF-16P-WS	43				
165X	7	B-1132	12	B-7122-C02	28	5F-4DWS06	38	5GF-RK	43				
B-0212	8	B-1142	12	B-7133	28	5F-4DWS08	38	5HR-232-01WE1	44				
B-0211	8	012394-25NS	13	B-7245-06	29	5F-4DWS10	38	5HR-242-01XE2	44				
B-0210	8	012395-25NS	13	G019430-45	28	5F-4DWS12	38	5HR-232-01-A	45				
B-0262	8	012446-25NS	13	B-7132-01	28	5F-4DWS14	38	5HR-242-01-A	45				
B-0260	8	012447-25NS	13	B-7232-01	28	5F-4DWS18	38	5SS-WH	45				
B-0216	8	B-3999-OF	14	019652-40	28	5F-4DWS05	38	5HR-232-12-A	45				
B-0312	8	014940-45	14	019653-40	28	5F-4DWS09	38	5HR-242-12-A	45				
B-0242	8	014941-45	14	G018477-45	28	5F-6DLS06	39	EMV-0522-24	45				
B-0241	8	B-0230-K	14	EW-7360B	31	5F-6DLS08	39	5F-1SLX05A	46				
B-0240	8	B-0230-KIT	14	EX-7930EW	31	5F-6DLS10	39	5F-1SLX05CA	46				
B-0243	8	B-1100-K	14	EW-7612	31	5F-6DLS12	39	5F-1SLX08A	46				
B-0343	8	EZ-K	14	EW-7612LH	31	5F-6DLS14	39	5F-1SLX10A	46				
B-0202	9	001636-45NS	14	EW-7611	31	5F-6DLS18	39	5F-1SLX12A	46				
B-0201	9	001637-45NS	14	EW-7656WC	31	5F-6DLS05	39	5F-2SLX05A	46				
B-0200	9	001638-45NS	14	5PR-2S00-H	33	5F-6DLS09	39	5F-2SLX05CA	46				
B-0252	9	002521-45NS	14	5PR-2S12-H	33	5F-7DLS06	40	5F-2SLX08A	46				
B-0251	9	175FCNS	14	5PR-8W00-H	33	5F-7DLS08	40	5F-2SLX10A	46				
B-0250	9	175FHNS	14	5PR-8W18-H	33	5F-7DLS10	40	5F-2SLX12A	46				
B-0300	9	B-WH4C-NS	14	5PR-8W14-H	33	5F-7DLS12	40	5F-4DLS05A	46				
B-0207	9	B-WH4H-NS	14	5PR-8W12-H	33	5F-7DLS14	40	5F-4DLS05CA	46				
B-0206	9	B-WH4-NS	14	5PR-8W10-H	33	5F-7DLS18	40	5F-4DLS08A	46				
B-0205	9	EC-HYDROGEN	15	5PR-8W08-H	33	5F-7DLS05	40	5F-4DLS10A	46				
B-0257	9	EC-HYDROGEN-LF	15	5PR-8W06-H	33	5F-7DLS09	40	5F-4DLS12A	46				



RELIABILITY BUILT IN™
www.tsbrass.com.cn

总部地址: 美国南卡罗来纳州崔弗勒莱斯特市

Headquarters Address: 2 Saddleback Cove P.O. Box 1088 Travelers Rest, SC 29690, USA

U.S. Toll-free: 800-476-4103 +1 864-834-4102 Fax: 800-868-0084 Email: tsbrass@tsbrass.com

上海工厂: 上海市浦东新区祝桥镇金闻路43号

Factory Adress: NO. 43, Jinwen Road, Zhuqiao Town, Pudong New District, Shanghai

Customer Service: 86-400-1086-036. Email: csasia@tsbrass.com

中国代表处: 上海市松江区泗泾镇九干路99弄2号楼2楼

China Representative Office: Floor 2, Building 2, 99 Jiugan Rd, Sijing Town. Songjiang Dist, Shanghai

Tel: 86-21-6295-1661 Fax: 86-21-6295-1662 Email: info@cp-asia.com

香港代表处: 香港观塘兴业街20号, 联合兴业工业大厦7楼B室

Hong Kong Representative Office: Factory B, 7/F, Union Hing Yip Factory Bldg., 20 Hing Yip Street, Kwun Tong, Kowloon, Hong Kong
 Tel: (852) 2621-3001 Fax: (852) 2621-3002



官方微信



Certified to NSF/ANSI 61 Section 9

2021 REV. 1