



RELIABILITY BUILT IN™

Limited One Year Warranty

T&S warrants to the original purchaser (other than for purposes of resale) that such product is free from defects in material and workmanship for a period of one (1) year from the date of purchase. During this one-year warranty period, if the product is found to be defective, T&S shall, at its options, repair and/or replace it. To obtain warranty service, products must be returned to...

*T&S Brass and Bronze Works, Inc.
Attn: Warranty Repair Department
2 Saddleback Cove
Travelers Rest, SC 29690*

Shipping, freight, insurance, and other transportation charges of the product to T&S and the return of repaired or replaced product to the purchaser are the responsibility of the purchaser. Repair and/or replacement shall be made within a reasonable time after receipt by T&S of the returned product. This warranty does not cover items which have received secondary finishing or have been altered or modified after purchase, or for defects caused by physical abuse to or misuse of the product, or shipment of the products.

Any express warranty not provided herein, and any remedy for Breach of Contract which might arise, is hereby excluded and disclaimed. Any implied warranties of merchantability or fitness for a particular purpose are limited to one year in duration. Under no circumstances shall T&S be liable for loss of use or any special consequential costs, expenses or damages.

Some states do not allow limitations on how long and implied warranty lasts or the exclusion or limitation of incidental or consequential damages, so the above limitations or exclusions may not apply to you. Specific rights under this warranty and other rights vary from state to state.

P/N: 098-003158-45 Rev.3
Date: 03-16-15
Drawn: TEH
Checked: JRM 03-16-15
Approved: JHB 03-16-15

Installation and Maintenance Instructions



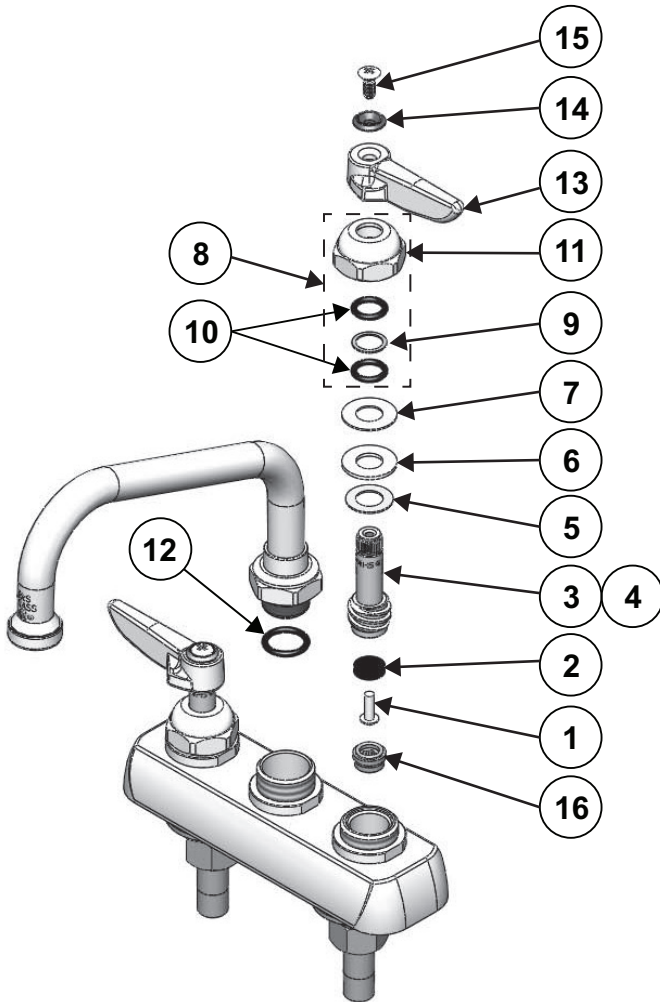
PARTS KIT (B-20K) (For the B-1100 Series Faucet)

**Deutsch: Installations- und
Wartungsanleitungen**

**Español: la Instalación y las
Instrucciones de
Mantenimiento**

**Français: les Instructions
d'Installation et
d'Entretien**

Exploded View



Part Number Guide

Base Faucet Assembly

1	Screw, Seat Washer	000933-45
2	Washer, Seat	001092-45
3	Spindle, RH	000800-25
4	Spindle, LH	000801-25
5	Washer, Brass	000986-45
6	Washer, Rubber	001047-45
7	Washer, Bonnet, Stainless Steel	002726-45
8	Asm, Bonnet	010196-25
9	Washer, Bonnet	009752-45
10	O-Ring, Diverter Stem	001075-45
11	Bonnet	009749-25
12	O-Ring, Nozzle Swivel Piece	001074-45
16	Seat, Removeable	000763-20

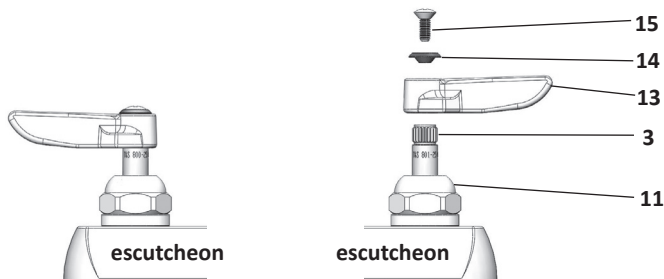
Parts Not Included in Kit

13	Handle, Lever	001638-45
14	Button, Index Hot (Red)	001661-45
	Button, Index Cold (Blue)	001660-45
15	Screw, Handle	000922-45

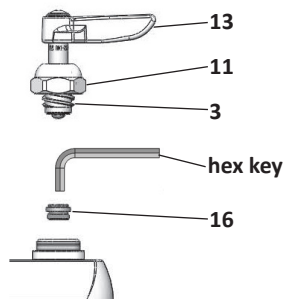
General Instructions

To replace worn parts:

1. Unscrew and remove no.15, no.14 and no.13 from no.3.



2. Unscrew and remove no.11 from escutcheon plate.



3. Using no.13 as a wrench, unscrew and remove no.3 from faucet body.
4. Use 1/4" Hex to remove no.16 seat if worn. Apply Loctite 222 to new seat threads and screw into body.
5. Replace worn parts with new parts from **B-20K** parts kit.
6. Reassemble parts in reverse order, making sure all new repair parts are in place.

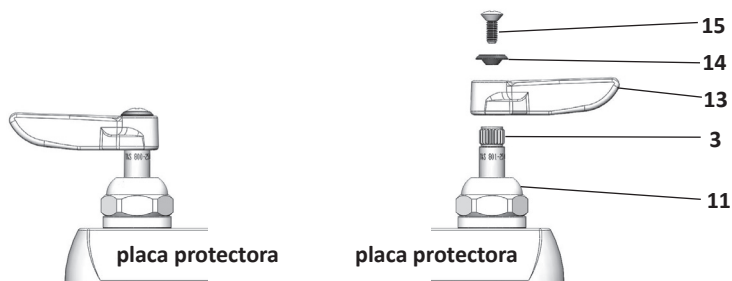
Note 1: This procedure is the same for both hot and cold side replacement.

Note 2: To replace no.12 see nozzle repair kit instructions (098-011648-45).

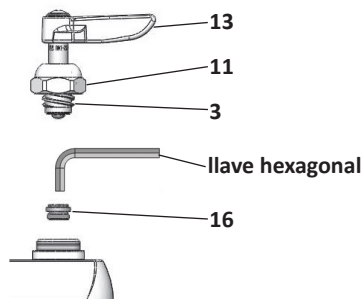
Instrucciones Generales

Para reemplazar las piezas gastadas:

1. Desatornille y retire el no. **15**, no. **14** y no. **13** del no. **3**.



2. Desatornille y retire no. **11** de la placa protectora.



3. Usando el no. **13** como llave, desatornille y retire el no. **3** del cuerpo del grifo.

4. Use un hexagonal 1/4" para quitar el asiento no. **16** si está gastado. Aplique Loctite 222 en la rosca del asiento nuevo y atorníllela en el cuerpo.

5. Reemplace las partes desgastadas con el juego de partes **B-20K**.

6. Vuelva a ensamblar las piezas en el orden inverso, procurando que todas las piezas nuevas reparadas estén en su lugar.

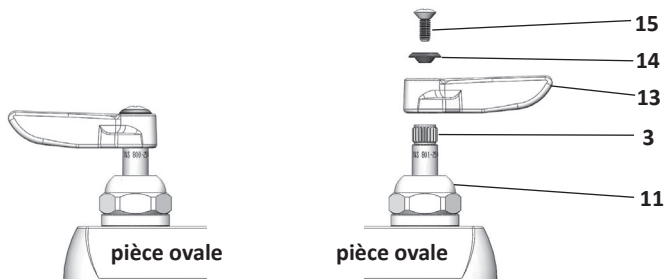
Nota 1: Este procedimiento es el mismo para reemplazar tanto el lado caliente como el frío.

*Nota 2: Para reemplazar el no. **12**, vea las instrucciones en el juego de reparación de boquillas (098-011648-45).*

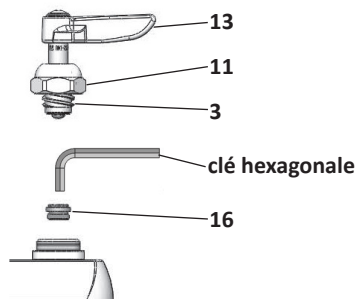
Instructions Générales

Pour remplacer les pièces usées :

1. Dévisser et retirer N° 15, N° 14 et N° 13 du N° 3.



2. Dévisser et retirer N° 11 de la pièce ovale.



3. À l'aide du N° 13 en guise de clé, dévisser et retirer le N° 3 du corps du robinet.

4. Utiliser la Hex 1/4" pour retirer le N° 16 si il est usé. Appliquer du Loctite 222 sur les nouveaux filets de sièges et visser dans le corps.

5. Remplacer les pièces usées avec des nouvelles pièces du kit **B-20K**.

6. Reconstituer les pièces dans le sens inverse, en s'assurant que toutes les nouvelles pièces réparées soient mises en place.

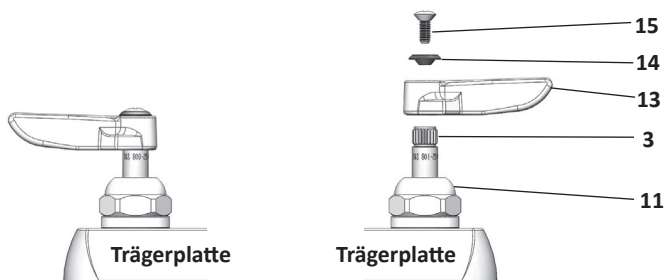
Remarque 1 : Cette procédure est la même pour le remplacement du côté chaud comme pour celui du côté froid.

Remarque 2 : Pour remplacer le N° 12 voir les instructions du kit de réparation de la buse (098-011648-45).

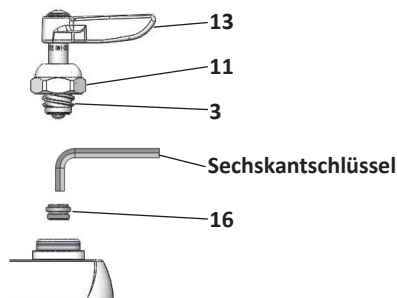
Allgemeine Anleitungen

Auswechseln abgenutzter Teile:

1. Nr. 15, Nr. 14 und Nr. 13 abschrauben und von Nr. 3 entfernen.



2. Nr. 11 abschrauben und von Trägerplatte entfernen.



3. Nr. 3 abschrauben und vom Wasserhahn entfernen. Dazu Nr. 13 als Schlüssel verwenden.

4. Passung (wenn verschlissen) mit einem ¼-Zoll-Sechskantschlüssel von Nr. 16 entfernen. Loctite 222 auf das neue Gewinde geben und Passung wieder aufschrauben.

5. Abgenutzte Teile durch neue Teile aus dem Einzelteilekit **B-20K** ersetzen.

6. Teile in umgekehrter Reihenfolge wieder zusammensetzen und sicherstellen, dass sich alle neuen Teile an der richtigen Stelle befinden.

Hinweis 1: Diese Schritte gelten für den Aus-/Einbau von Ersatzteilen sowohl auf der Heiß- als auch der Kaltwasserseite.

Hinweis 2: Eine Anleitung für den Ersatz von Nr. 12 finden Sie im Lieferumfang des Düsenreparaturkits(098-011648-45).

RELATED T&S BRASS PRODUCT LINE



B-1120
Deck-Mounted Workboard Faucet

T&S BRASS AND BRONZE WORKS, INC.

A firm commitment to application-engineered plumbing products

2 Saddleback Cove, P.O. Box 1088,
Travelers Rest, SC 29690

Phone: (864) 834-4102

Fax: (864) 834-3518

E-mail: tsbrass@tsbrass.com

T & S Brass-Europe
'De Veenhoeve'

Oude Nieuwveenseweg 84

2441 CW Nieuwveen

The Netherlands



RELIABILITY BUILT IN™