

# Complete T&S Hose Reel Systems



The best choice to ensure code compliance and efficiency.

T&S' New Smart Model Number System Makes It Easy.



**B-7 2 3 2 - U 01 W S1 B E**

**Reel Material:**

- 1 = Stainless Steel
- 2 = Epoxy coated

**Diameter:**

- 2 = 3/8"
- 3 = 1/2"  
*(stainless models only)*

**Cartridge Type:**

- E = Eterna
- C = Cerama  
*(not available on the S3, S5 and S6 System)*

**Hose Length:**

- 1 = 15 ft.
- 2 = 30 ft. *(closed models only)*
- 3 = 35 ft. *(open models only)*
- 4 = 50 ft.

**Reel:**

- C = Closed *(3/8" only)*
- U = Open

**Inlet Type:**

- B = Bottom Inlet
- T = Top Inlet  
*(available only on S7 and S8 System Types)*

**Spray Valve:**

- 01 = EB-0107
- 1M = B-0107
- 1J = B-0107-J
- 02 = MV-2516-24
- 03 = MV-2516-34
- 04 = MV-2516-44
- 05 = MV-2522-24
- 06 = MV-2522-34
- 07 = MV-2522-44
- 08 = B-0108-H
- 8M = B-0108
- 10 = EB-2322
- 11 = MV-3516-24

**System Type:**

*(see chart on back)*

**Mounting Brackets:**

- P = Pivot/Ceiling Bracket • G016652-45
- W = Wall Swing Bracket • G019430-45
- T = Table Leg Bracket • G018477-45
- X = No Bracket

When you purchase a complete hose reel system from T&S, you get all the necessary parts to ensure code compliance and efficiency.

## We have everything you need to Build A Perfect Hose Reel System.

**What material do you prefer?  
Stainless or epoxy coated?  
(Hint: Preference and/or price.)**



**(1) Stainless Reels**  
Highly durable and corrosion resistant.

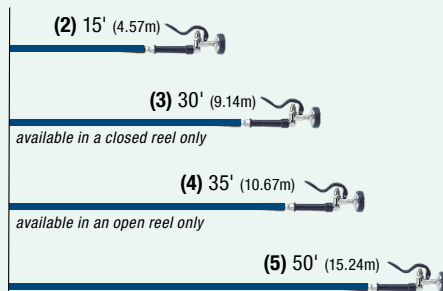
**(2) Epoxy Coated**  
Less expensive alternative while still providing long-lasting durability.

**What length hose do you need?**

**To Determine Length:**

**1** – Decide where the reel will be mounted and locate the nearest water line.

**2** – Measure the distance from the installation point to the furthest point that will be cleaned.



**What diameter of hose? 1/2" or 3/8"?**  
**(Hint: Only use 1/2" if heavy cleaning is required, something like a loading dock.)**

**Hose Diameter:** Diameter determines your flow rate, in conjunction with your choice of outlet device and the existing water pressure.

**(2) 3/8"** – Standard for most specifications involving washdown or pre-rinse.

**(3) 1/2"** – Ideal for higher-volume heavy cleaning applications.

# Complete T&S Hose Reel Systems



The best choice to ensure code compliance and efficiency.

**Which style — open or enclosed? (Hint: Is the ease of cleaning and replacing the hose important to your facility?)**



**An Aesthetic Choice**

**(U) Open** – Allows visibility and easy cleaning of the hose.

**(C) Closed** – Keeps the hose out of sight.

**Which base system is required?**



**S1** 8" Wall Mount



**S2** 8" Wall Mount with Additional Check Valves



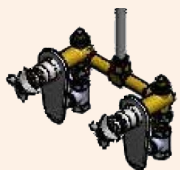
**S4** 8" Deck Mount



**S3** Concealed Base



**S5** Cabinet



**S6** 8" Concealed Wall Mount with Loose Key Stops



**S7** Cabinet Recessed Mount



**S8** Cabinet Surface Mount



**S9** Single Hole Deck Mount

**Which spray valve is required? Shower spray or heavy duty water gun? Front or rear trigger?**

**How to choose?** When selecting an outlet device, keep in mind the size of the item or area to be washed, as well as how the operator might hold the device while in use. Considering the easiest position ahead of time will allow for maximum comfort and efficiency later.



**01**  
EB-0107



**1M**  
B-0107  
(Pre-Rinse)



**1J**  
B-0107-J  
(Pre-Rinse)



**02** MV-2516-24  
**03** MV-2516-34  
**04** MV-2516-44



**05** MV-2522-24  
**06** MV-2522-34  
**07** MV-2522-44



**08**  
B-0108-H



**8M**  
B-0108  
(Pre-Rinse)



**10**  
EB-2322

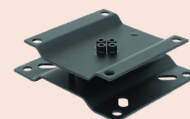


**11**  
MV-3516-24

**How do you plan to mount the reel?**



**(W) Swing Brackets**  
For wall mount applications; allows 100° movement from right to left.



**(P) Pivot Bracket**  
For ceiling, tabletop mount applications; allow 330° movement.



**(T) Table Leg Bracket**  
For table leg mount applications; swings under the table when not in use.

**If using a mixing valve, do you prefer Eterna (compression) or Cerama (ceramic) cartridges?**



**(C) Cerama**  
Commercial-grade ceramic cartridges offer unmatched durability and are backed by a lifetime guarantee



**(E) Eterna**  
Solid brass compression cartridge ideal for installations where there is sediment present in the water supply.

2 Saddleback Cove • P.O. Box 1088 • Travelers Rest, SC 29690  
[tsbrass.com](http://tsbrass.com) • [customerservice@tsbrass.com](mailto:customerservice@tsbrass.com)

Toll-Free 800-476-4103 • Phone 800-476-4103 • Fax 800-868-0084

800-020694-45 V.3 9/22