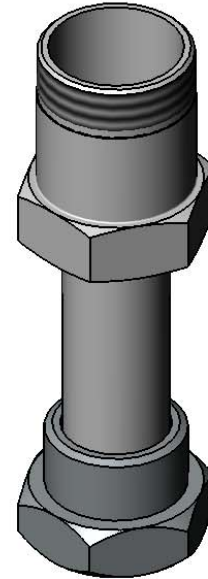
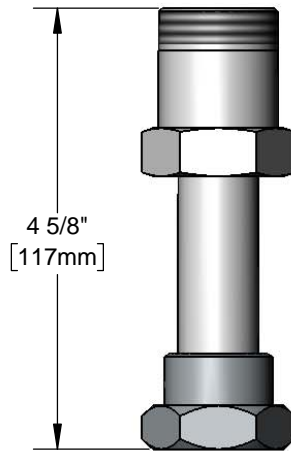




Architect/Engineering Specifications:

Big-Flo stright swivel extension, polished chrome plated brass body with 1 1/4-18 UN female inlet, 1/2" NPT nipple and 1 1/4-18 UN male swivel outlet. Certified to ASME A112.18.1/CSA B125.1, NSF 61-Section 9 and NSF 372.

Job Name _____
 Model Specified _____ Quantity _____
 Variations Specified _____
 Date _____



Features & Benefits:

- Big-Flo straight swivel extension
- 3" Nipple
- Gasket
- 1 1/4-18 UN female inlet accepts standard T&S Big-Flo faucets
- 1 1/4-18 UN male outlet
- Material: Polished chrome plated brass body

Product Compliance:

- ASME A112.18.1 / CSA B125.1
- NSF 61 - Section 9
- NSF 372 (Low Lead Content)



Warranty: One Year (Limited)



Performance Data:

- N/A

