



T&S BRASS AND BRONZE WORKS, INC.
 2 Saddleback Cove / P.O. Box 1088
 Travelers Rest, SC 29690

Model No.
078X

Item No.

Travelers Rest, SC: 800-476-4103 • Simi Valley, CA: 800-423-0150 • Fax: 864-834-3518 • www.tsbrass.com

This Space for Architect/Engineer Approval

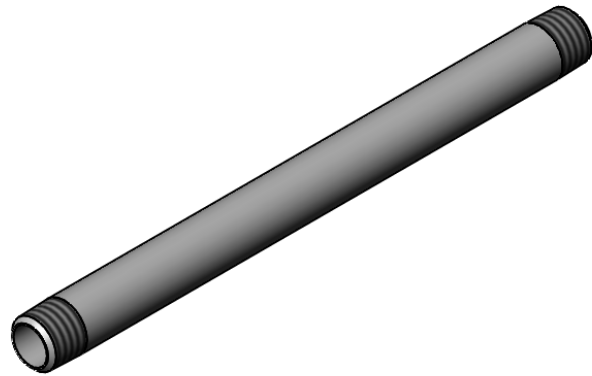
Job Name _____ Date _____

Model Specified _____ Quantity _____

Customer/Wholesaler _____

Contractor _____

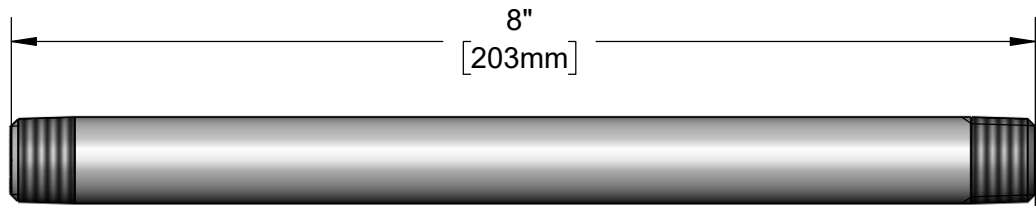
Architect/Engineer _____



3/8" NPT Male
Both Ends



ϕ 11/16"
[17mm]



8"
[203mm]

1/2"
[13mm]
Typ Both Ends

Product Specifications:
 Chrome Plated Brass 8" Nipple with 3/8" NPT Inlet and Outlet

Product Compliance:
 NSF 61 - Section 9
 NSF 372 (Low Lead Content)