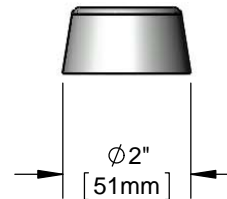
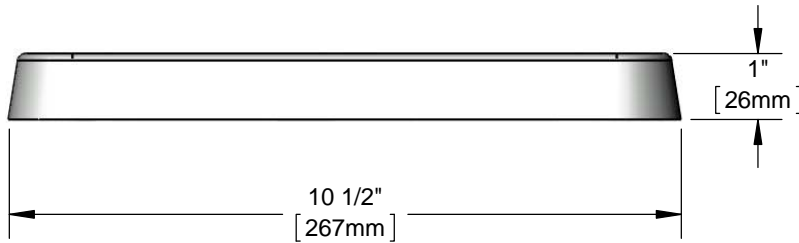
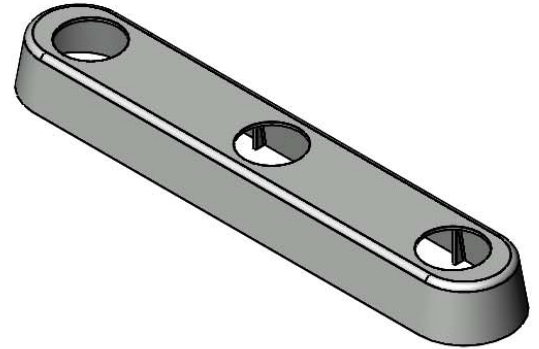




Architect/Engineering Specifications:

Polished chrome plated escutcheon for 8" c/c workboard faucets with T&S Eterna or Cerama cartridges.

Job Name _____
 Model Specified _____ Quantity _____
 Variations Specified _____
 Date _____



Features & Benefits:

- Escutcheon for 8" workboard faucets with either Eterna or Cerama cartridges
- Material: Polished chrome plated metal

Product Compliance:

- N/A

Warranty: One Year (Limited)

Performance Data:

- N/A

