



T&S BRASS AND BRONZE WORKS, INC.
 2 Saddleback Cove / P.O. Box 1088
 Travelers Rest, SC 29690

Model No.
B-11K

Item No.

Travelers Rest, SC: 800-476-4103 • Simi Valley, CA: 800-423-0150 • Fax: 864-834-3518 • www.tsbrass.com

This Space for Architect/Engineer Approval

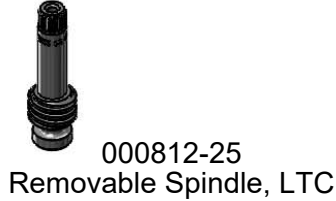
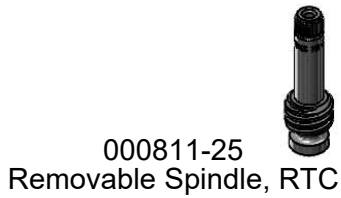
Job Name _____ Date _____

Model Specified _____ Quantity _____

Customer/Wholesaler _____

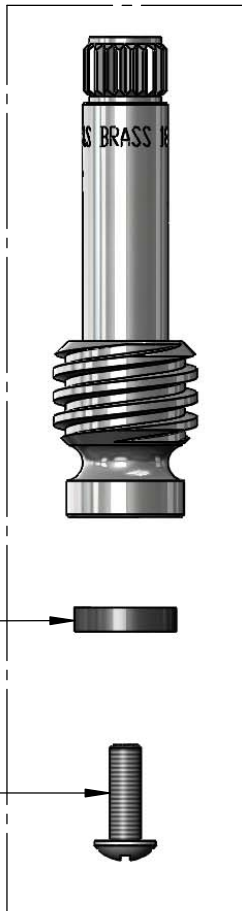
Contractor _____

Architect/Engineer _____



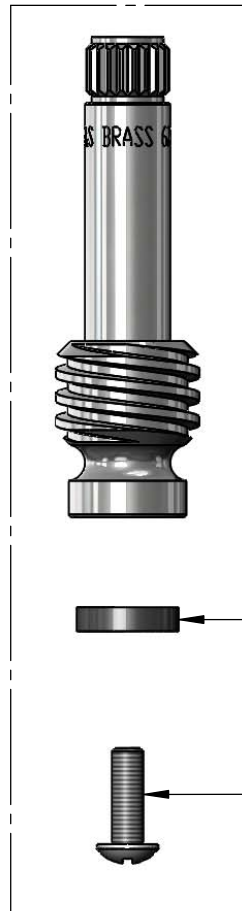
000811-25
 Removable Spindle, RTC
 Qty = 1 ea.

000812-25
 Removable Spindle, LTC
 Qty = 1 ea.



001092-45
 Seat Washer

000933-45
 Screw



001092-45
 Seat Washer

000933-45
 Screw

Product Specifications:
 Replacement Parts Kit For Eterna Spindles (RTC & LTC)

Product Compliance:
 NSF 61 - Section 9
 NSF 372 (Low Lead Content)