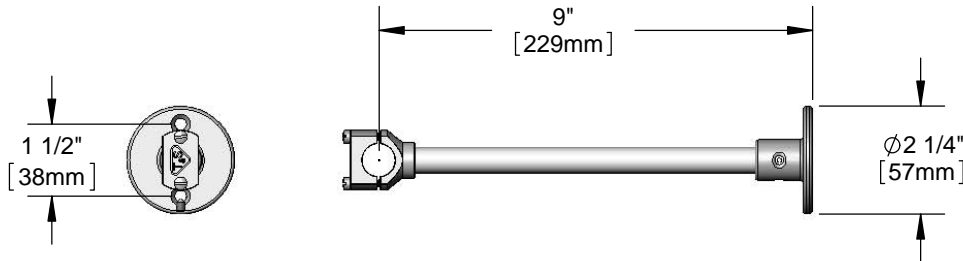
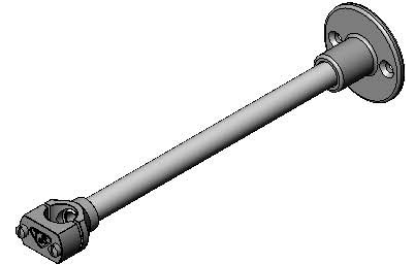




Architect/Engineering Specifications:

Polished chrome plated brass 9" wall bracket with chrome plated mounting screws.

Job Name _____
 Model Specified _____ Quantity _____
 Variations Specified _____
 Date _____



Features & Benefits:

- Polished chrome plated brass 9" wall bracket
- $\text{Ø}2\ 1/4"$ wall flange
- Fits 3/8" pipe
- Mounting screws (included)
- Material: Polished chrome plated brass body and chrome plated brass screws

Product Compliance:

- N/A

Warranty: One Year (Limited)

Performance Data:

- N/A

