



# T&S BRASS AND BRONZE WORKS, INC.

2 Saddleback Cove / P.O. Box 1088  
Travelers Rest, SC 29690

Model No.

**002870-40**

Item No.

Travelers Rest, SC: 800-476-4103 • Simi Valley, CA: 800-423-0150 • Fax: 864-834-3518 • www.tsbrass.com

This Space for Architect/Engineer Approval

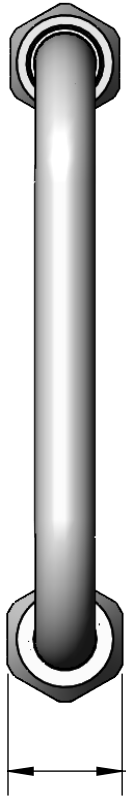
Job Name \_\_\_\_\_ Date \_\_\_\_\_

Model Specified \_\_\_\_\_ Quantity \_\_\_\_\_

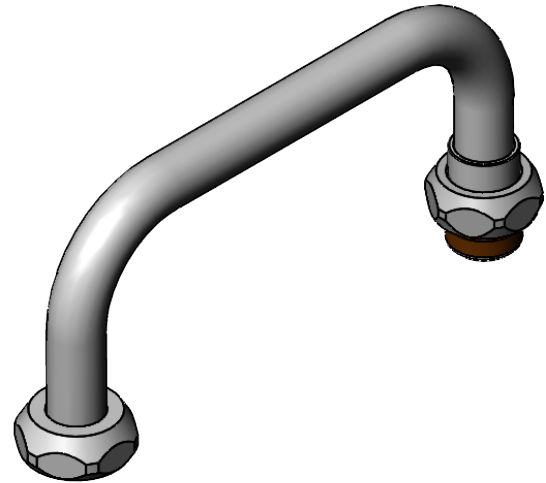
Customer/Wholesaler \_\_\_\_\_

Contractor \_\_\_\_\_

Architect/Engineer \_\_\_\_\_



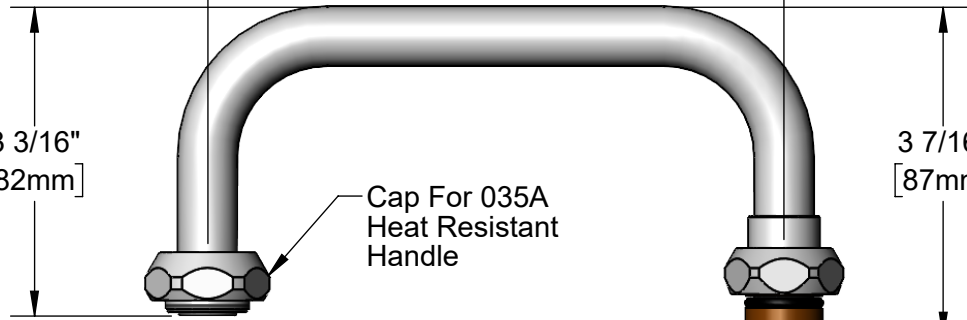
1 3/16"  
[30mm]



6"  
[152mm]



3 3/16"  
[82mm]



3 7/16"  
[87mm]

Cap For 035A  
Heat Resistant  
Handle

Swivel Joint Fits  
T&S Double Joint  
Back Section Outlets

Product Specifications:  
6" Front Section of Double Joint Swing Nozzle

Product Compliance:  
NSF 61 - Section 9  
NSF 372 (Low Lead Content)



# T&S BRASS AND BRONZE WORKS, INC.

2 Saddleback Cove / P.O. Box 1088  
Travelers Rest, SC 29690

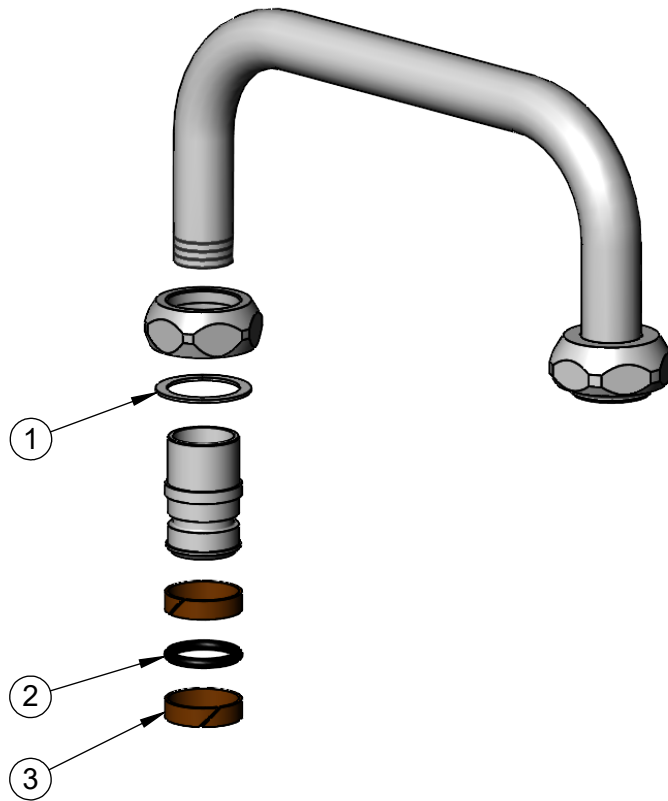
Model No.

**002870-40**

Item No.

Travelers Rest, SC: 800-476-4103 • Simi Valley, CA: 800-423-0150 • Fax: 864-834-3518 • www.tsbrass.com

ITEM NO.	SALES NO.	DESCRIPTION
1	009538-45	Swivel Washer
2	001074-45	O-Ring
3	011429-45	Swivel Sleeves (2)



Product Specifications:  
6" Front Section of Double Joint Swing Nozzle

Product Compliance:  
NSF 61 - Section 9  
NSF 372 (Low Lead Content)