



T&S BRASS AND BRONZE WORKS, INC.

2 Saddleback Cove / P.O. Box 1088
Travelers Rest, SC 29690

Model No.

B-0678

Item No.

Travelers Rest, SC: 800-476-4103 • Simi Valley, CA: 800-423-0150 • Fax: 864-834-3518 • www.tsbrass.com

This Space for Architect/Engineer Approval

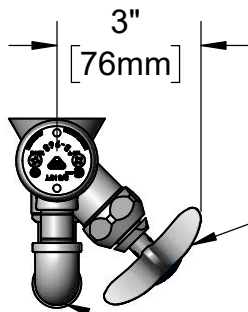
Job Name _____ Date _____

Model Specified _____ Quantity _____

Customer/Wholesaler _____

Contractor _____

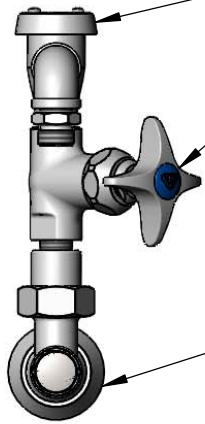
Architect/Engineer _____



68" Reinforced PVC
Hose & Extended
Spray Valve

Control Valve
Rotated 45° to
Avoid Wall

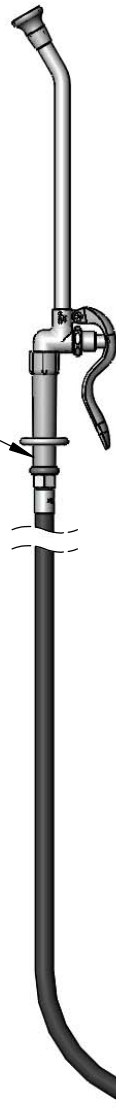
Items Not Shown
For Clarity



B-0968
3/8" NPT
Vacuum Breaker

Quarter-Turn Eterna
Cartridge w/ Spring
Check & 4-Arm Handle
w/ Color Coded Index

Ø 2" [51mm]
Flange w/
1/2" NPT
Female Inlet



Wall Hook

3 7/16"
[87mm]

7 9/16"
[192mm]

Loose Key Stop

Mounting Surface

Side View Scale: 1:8

Product Specifications:

Bed Pan Washer, Loose Key Angle Stop, Vacuum Breaker, Quarter-Turn Eterna Cartridge w/ Spring Check, 4-Arm Handle & Self-Closing Valve w/ Extended Spray Outlet w/ 2.2 GPM Rosespray

Product Compliance:

ASME A112.18.1 / CSA B125.1
ASSE 1001 (VB)
2019 DOE PRSV Non-Compliant

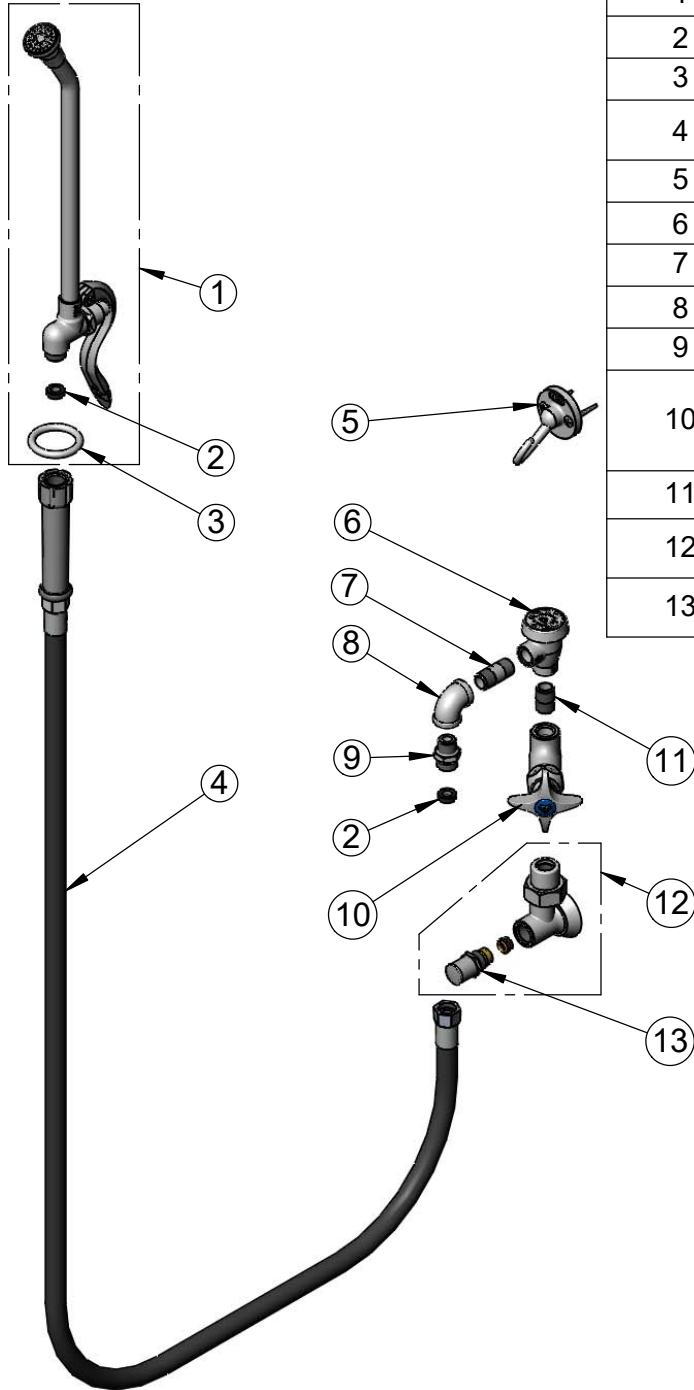


T&S BRASS AND BRONZE WORKS, INC.
 2 Saddleback Cove / P.O. Box 1088
 Travelers Rest, SC 29690

Model No.
B-0678
 Item No.

Travelers Rest, SC: 800-476-4103 • Simi Valley, CA: 800-423-0150 • Fax: 864-834-3518 • www.tsbrass.com

ITEM NO.	SALES NO.	DESCRIPTION
1	002865-40	Extended Spray Wand
2	010476-45	#27 Washer
3	000907-45	Spray Valve Hold Down Ring
4	B-0068-R	68" Reinforced PVC Hose w/ Handle
5	B-0104-D	Dummy Wall Hook Bracket
6	B-0968	3/8" NPT Vacuum Breaker
7	002341-40	Nipple, 3/8" NPT x 1 1/2"
8	001355-40	Elbow, 3/8 NPT
9	053A	Adapter, 3/8" NPT x 3/4-14UN
10	007010-40NS	Straight Stop w/ Quarter-Turn Eterna Cartridge w/ Spring Check, 4-Arm Handle & Blue Index
11	002535-25	3/8" Close Nipple
12	B-1351	Loose Key 1/2" NPT Angle Stop w/ Tee Handle & Screw
13	166A	Service Stop Spindle w/ Cap, Handle & Screw



002432-45
T-Handle Screw



001802-45
T-Handle

Product Specifications:

Bed Pan Washer, Loose Key Angle Stop, Vacuum Breaker, Quarter-Turn Eterna Cartridge w/ Spring Check, 4-Arm Handle & Self-Closing Valve w/ Extended Spray Outlet w/ 2.2 GPM Rosespray

Product Compliance:

ASME A112.18.1 / CSA B125.1
 ASSE 1001 (VB)
 2019 DOE PRSV Non-Compliant