



# Single Sill Faucets

## B-0730

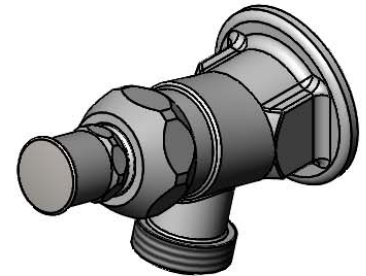
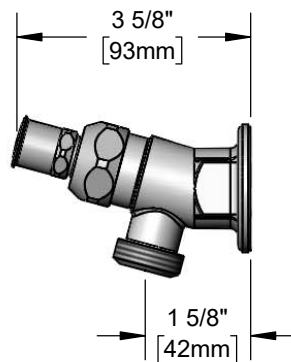
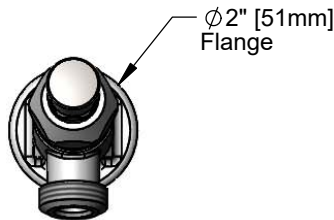
TAG:

*Sill Faucet*

### Architect/Engineering Specifications:

Single hole, single temperature, wall mount faucet with rough chrome plated brass body, garden hose male outlet, compression cartridge, key or screwdriver controlled handle and 1/2" NPT female inlet. Certified to ASME A112.18.1/CSA B125.1, NSF 61-Section 9 and NSF 372.

Job Name \_\_\_\_\_  
 Model Specified \_\_\_\_\_ Quantity \_\_\_\_\_  
 Variations Specified \_\_\_\_\_  
 Date \_\_\_\_\_



### Features & Benefits:

- Single hole, single temperature wall mount faucet
- Garden hose male outlet
- Eterna compression cartridge w/ spring check
- Key or screwdriver controlled handle
- 1/2" NPT female inlet with Ø2" flange
- Material: Rough chrome plated brass body

### Product Compliance:

- ASME A112.18.1 / CSA B125.1
- NSF 61 - Section 9
- NSF 372 (Low Lead Content)



**Warranty:** One Year (Limited)

### Performance Data:

- Pressure: 20 - 125 psi [1.38 - 8.62 bar]
- Temperature: 40 °F - 140 °F [4.44 °C - 60 °C]
- Flow Rate: 9.10 GPM [34.45 L/min] @ 60 psi [4.14 bar]

### Optional Cartridges

- Quarter Turn Cerama
- Eterna
- Quarter Turn Eterna
- Push Button Metering
- Pivot Action Metering
- Wrist Action Metering

### Optional Handles

- 4" Wrist Action
- Lever
- 4-Arm



**T&S BRASS AND BRONZE WORKS, INC.**



• 2 Saddleback Cove • Travelers Rest, SC 29690  
 Ph 800-476-4103 • Fax 864-834-3518  
 • Simi Valley, CA • Ph 800-423-0150 • www.tsbrass.com

Date: 01/11/23