



T&S BRASS AND BRONZE WORKS, INC.

2 Saddleback Cove / P.O. Box 1088
Travelers Rest, SC 29690

Model No.

B-1344-CRVB102C

Item No.

Travelers Rest, SC: 800-476-4103 • Simi Valley, CA: 800-423-0150 • Fax: 864-834-3518 • www.tsbrass.com

This Space for Architect/Engineer Approval

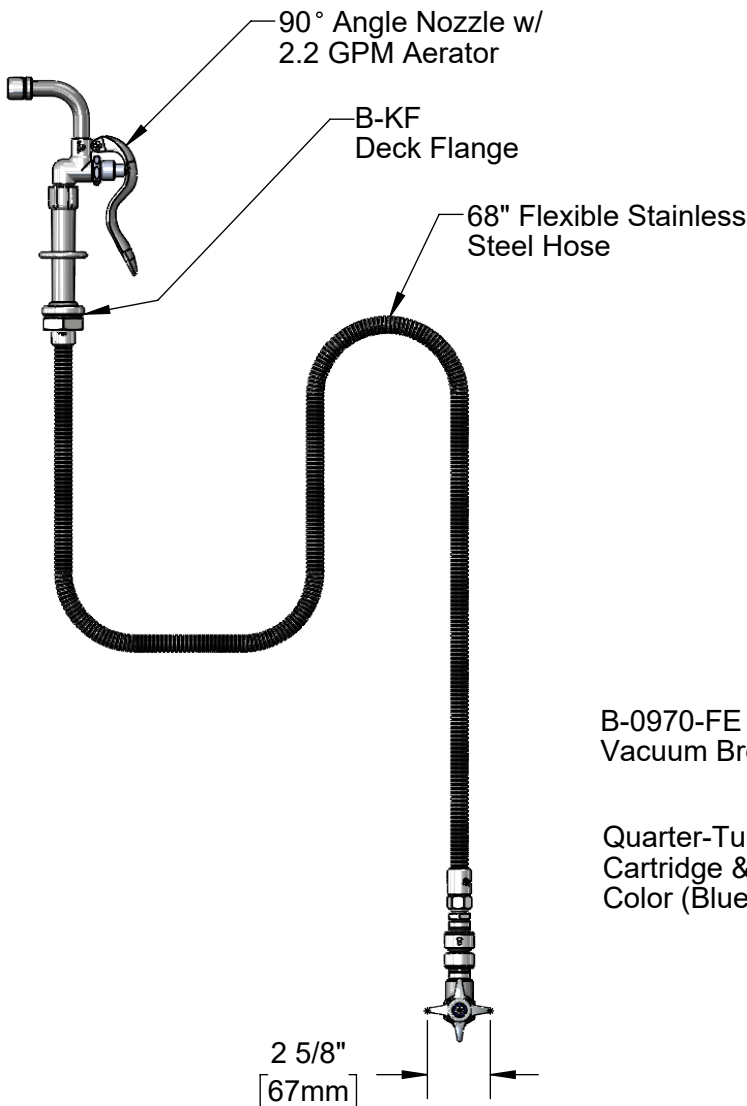
Job Name _____ Date _____

Model Specified _____ Quantity _____

Customer/Wholesaler _____

Contractor _____

Architect/Engineer _____



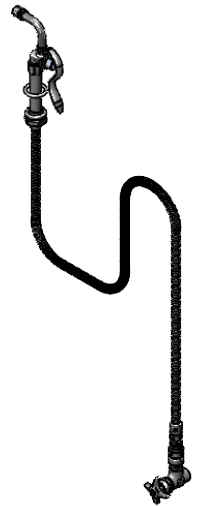
B-0970-FE
Vacuum Breaker

Quarter-Turn Cerama
Cartridge & 4-Arm Handle,
Color (Blue) Index

1/2" NPT
Female Inlet

3 15/16"
[101mm]

1 1/8"
[29mm]



Rough-In Requirement:

Deck Flange: (1) ϕ 1 9/16" [40mm] Mounting Hole

Product Specifications:

Angle Stop w/ Quarter-Turn Cerama Cartridge, 4-Arm Handle, Vacuum Breaker, 90° Angle Spray Nozzle, 2.2 GPM Aerator, 68" Flexible Stainless Steel Hose & 1/2" NPT Female Inlet

Product Compliance:

ASME A112.18.1 / CSA B125.1
NSF 61 - Section 9
NSF 372 (Low Lead Content)
2019 DOE PRSV Non-Compliant
Product Not Designed/Intended for
Commercial Warewashing in North America



T&S BRASS AND BRONZE WORKS, INC.

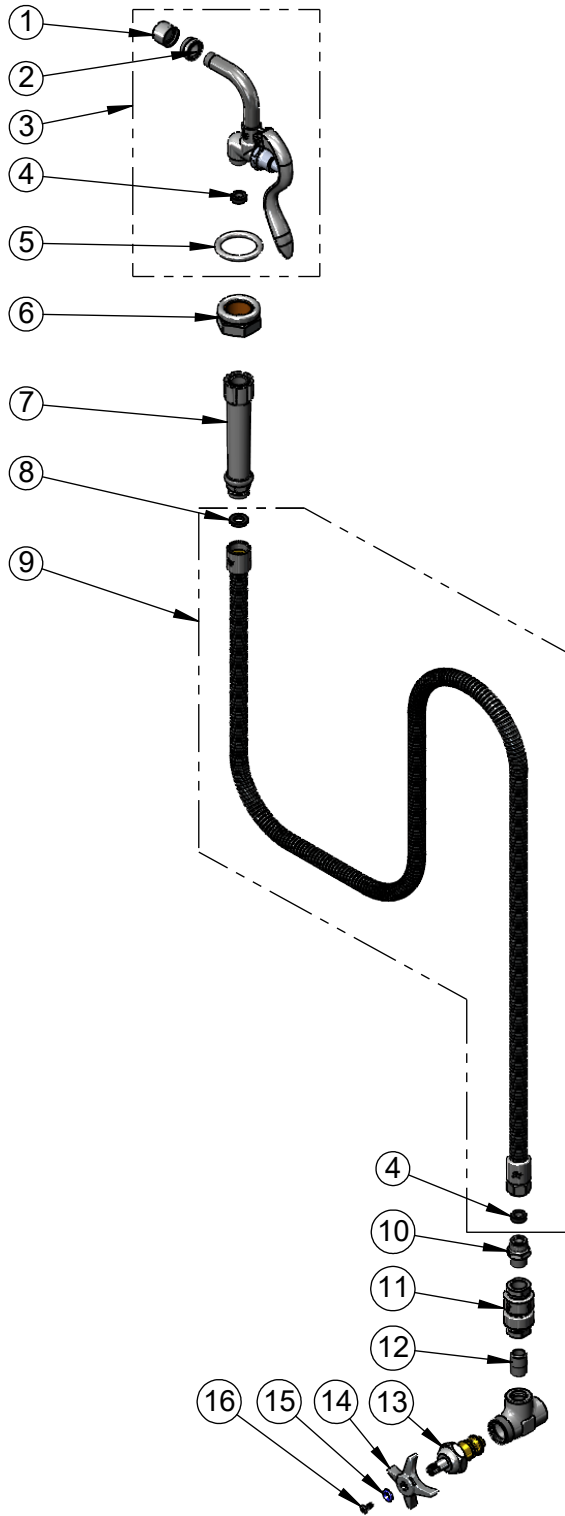
2 Saddleback Cove / P.O. Box 1088
Travelers Rest, SC 29690

Model No.

B-1344-CRVB102C

Item No.

Travelers Rest, SC: 800-476-4103 • Simi Valley, CA: 800-423-0150 • Fax: 864-834-3518 • www.tsbrass.com



ITEM NO.	SALES NO.	DESCRIPTION
1	B-0199-01	2.2 GPM Aerator, 55/64-27 UN Female
2	000554-25	Adapter 55/64-27 Male Thread x 5/8-27 Female Thread
3	009937-40	90° Angle Spray Nozzle w/ 2.2 GPM Aerator
4	010476-45	#27 Washer
5	000907-45	Spray Valve Hold Down Ring
6	B-KF	Protective Flange
7	002987-40	Grip Handle (Gray)
8	001014-45	Washer, Hose Barrel
9	B-0068-H2A	68" Flexible Stainless Steel Hose, Less Handle
10	053A	Adapter, 3/8" NPT x 3/4-14UN
11	B-0970-FE	3/8" NPT Vacuum Breaker
12	002535-25	3/8" Close Nipple
13	012394-25	Quarter-Turn Cerama Cartridge, RTC
14	002521-45	4-Arm Handle
15	001660-45	Blue Index-CW
16	000922-45	Lever Handle Screw

Product Specifications:

Angle Stop w/ Quarter-Turn Cerama Cartridge, 4-Arm Handle, Vacuum Breaker, 90° Angle Spray Nozzle, 2.2 GPM Aerator, 68" Flexible Stainless Steel Hose & 1/2" NPT Female Inlet

Product Compliance:

ASME A112.18.1 / CSA B125.1
NSF 61 - Section 9
NSF 372 (Low Lead Content)
2019 DOE PRSV Non-Compliant
Product Not Designed/Intended for
Commercial Warewashing in North America