



# Foot and Knee Pedal Valves

## B-0509-D127XV12

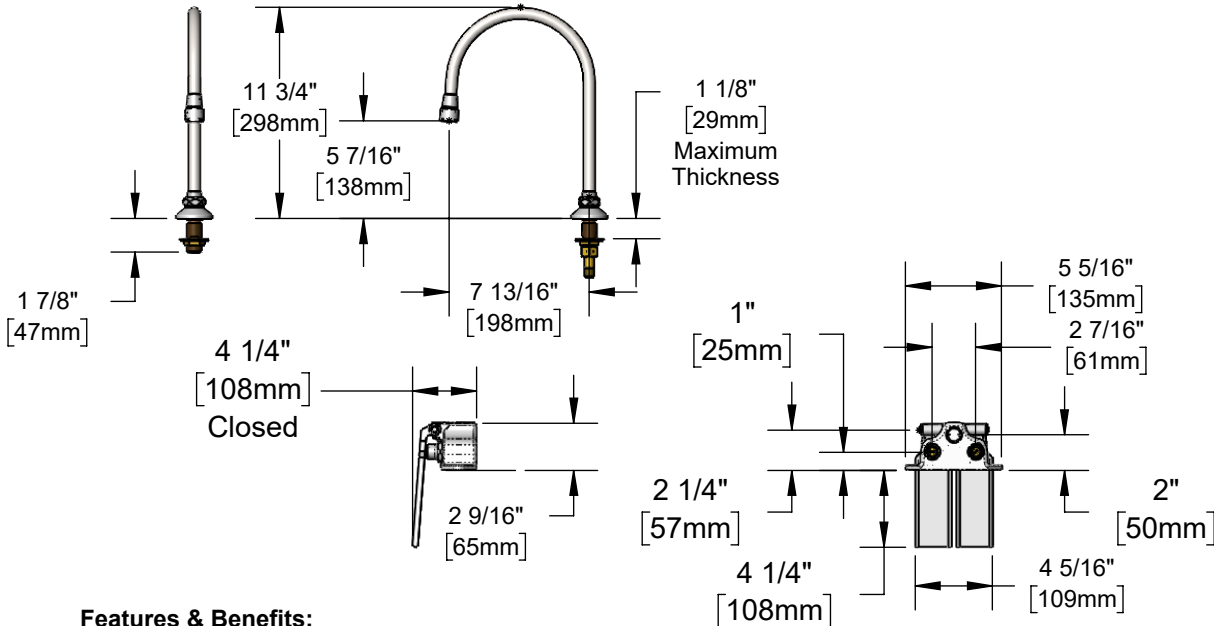
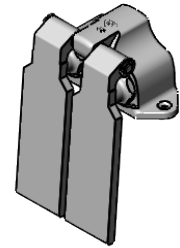
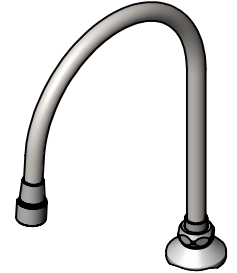
TAG: \_\_\_\_\_

### Double Knee Pedal Valve

#### Architect/Engineering Specifications:

Horizontal surface mount double knee pedal valve with polished chrome plated solid brass body and aluminum pedals, self-closing valves, 1/2" NPT female inlets and outlet, mounting screws, 7 11/16" deck mount rigid/swivel gooseneck with 1/2" NPSM male deck mount base flange and 1.2 GPM vandal resistant aerator. Certified to ASME A112.18.1/CSA B125.1, NSF 61-Section 9 and NSF 372.

Job Name \_\_\_\_\_  
 Model Specified \_\_\_\_\_ Quantity \_\_\_\_\_  
 Variations Specified \_\_\_\_\_  
 Date \_\_\_\_\_



#### Features & Benefits:

- Deck mounted rigid/swivel dummy gooseneck for remote locations
  - Lock washer provided for rigid application
  - 1.2 GPM vandal resistant aerator, Series 7 (B-0199-07-F12)
  - 1/2" NPSM male inlet w/  $\phi 2$ " Flange
  - Tailpiece and nut for 1/4" NPT male connection
  - Horizontal surface mount double pedal valve
  - Aluminum knee pedals
  - Pedals flip up for cleaning
  - Self-closing valves
  - 1/2" NPT female inlets
  - 1/2" NPT female outlet
  - Includes mounting screws
  - Material: Polished chrome plated brass body, flange & tubular spout and aluminum knee pedals
- Optional Outlets (Series 2 / VR Series 7)**

#### Product Compliance:

- ASME A112.18.1 / CSA B125.1
- NSF 61 - Section 9
- NSF 372 (Low Lead Content)
- EPA WaterSense

**Warranty:** One Year (Limited)

#### Performance Data:

- Pressure: 20 - 125 psi [1.38 - 8.62 bar]
- Temperature: 40°F - 140°F [4.44°C - 60°C]
- Flow Rate: 1.20 GPM [4.54 L/min] @ 60 psi [4.14 bar]



GPM	Aerated	Non-Aerated (Laminar)	VR Aerated	VR Non-Aerated (VR Laminar)	Optional Cartridges
0.35	N/A	<input type="checkbox"/> B-0199-02-N035	N/A	<input type="checkbox"/> B-0199-07-N035	<input type="checkbox"/> Metering Cartridge
0.5	N/A	<input type="checkbox"/> B-0199-02-N05	N/A	<input type="checkbox"/> B-0199-07-N05	
1.0	<input type="checkbox"/> B-0199-02-F10	N/A	<input type="checkbox"/> B-0199-07-F10	N/A	
1.2	<input type="checkbox"/> B-0199-02-F12	N/A	Standard	N/A	
1.5	<input type="checkbox"/> B-0199-02-WS	N/A	<input type="checkbox"/> B-0199-07-WS	N/A	
2.2	<input type="checkbox"/> B-0199-02	N/A	<input type="checkbox"/> B-0199-07	N/A	



T&S BRASS AND BRONZE WORKS, INC.



• 2 Saddleback Cove • Travelers Rest, SC 29690  
 Ph 800-476-4103 • Fax 864-834-3518  
 • Simi Valley, CA • Ph 800-423-0150 • www.tsbrass.com

Date: 03/13/23