



T&S BRASS AND BRONZE WORKS, INC.
 2 Saddleback Cove / P.O. Box 1088
 Travelers Rest, SC 29690

Model No.

B-7212-01-PPB

Item No.

Travelers Rest, SC: 800-476-4103 • Simi Valley, CA: 800-423-0150 • Fax: 864-834-3518 • www.tsbrass.com

This Space for Architect/Engineer Approval

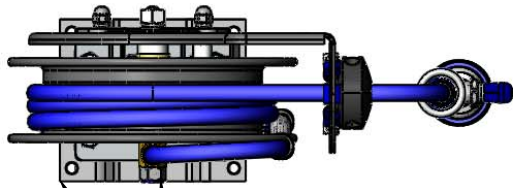
Job Name _____ Date _____

Model Specified _____ Quantity _____

Customer/Wholesaler _____

Contractor _____

Architect/Engineer _____

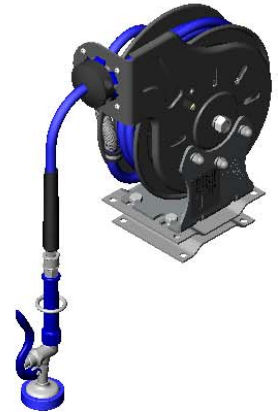


3/8" NPT Female Inlet
(Left Side of Reel)

Epoxy Coated Deck Mount
Pivot Bracket w/ 345° of
Rotation

Ø 12"
[305mm]

Epoxy Coated Open
Hose Reel
15' of 3/8" Hose



17 5/8"
[447mm]

9 3/16"
[223mm]

7 1/8"
[164mm]

Mounting Hole Details

Ø 1/2"
[12mm]

5 5/16"
[135mm]

6 3/8"
[163mm]

5 5/16"
[134mm]

6 1/4"
[159mm]

019652-40
3/8" NPT
Live Swivel

EB-0107
High Flow
Spray Valve

Mounting Hardware Included
for Hose Reel to Bracket

Product Specifications:

3/8" x 15' Epoxy Coated Open Reel, High Flow Spray Valve w/ Swivel & 345 Degree Epoxy Coated Pivot Deck Mount Bracket w/ Mounting Hardware for Hose Reel to Bracket

Product Compliance:

NSF 61 Exempt (Non-Potable)
EPA Act 2005 Non-Compliant (PRSV)

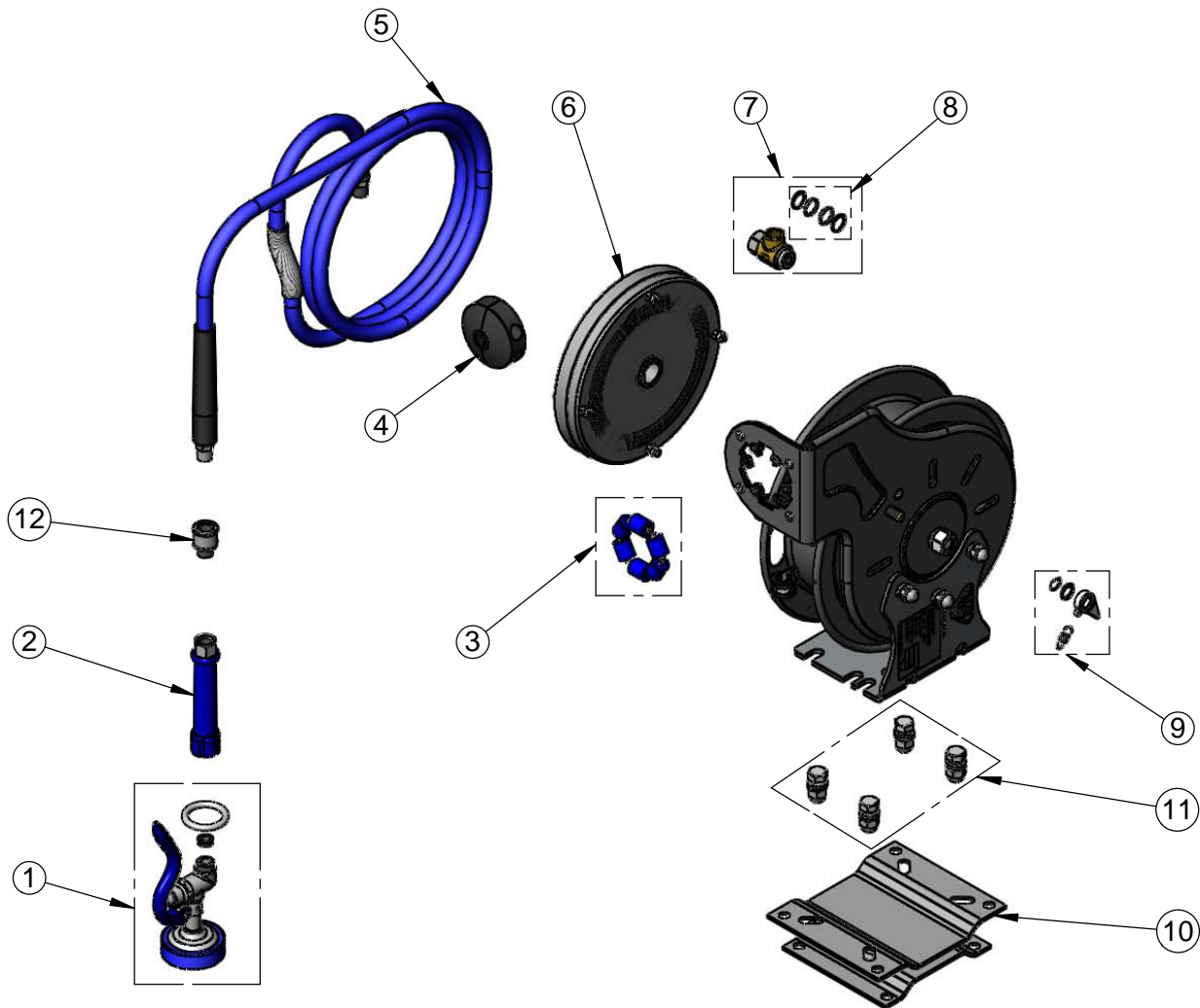


T&S BRASS AND BRONZE WORKS, INC.
 2 Saddleback Cove / P.O. Box 1088
 Travelers Rest, SC 29690

Model No.
B-7212-01-PPB
 Item No.

Travelers Rest, SC: 800-476-4103 • Simi Valley, CA: 800-423-0150 • Fax: 864-834-3518 • www.tsbrass.com

| ITEM NO. | SALES NO. | DESCRIPTION |
|----------|------------|---------------------------------|
| 1 | EB-0107 | High Flow Spray Valve (Blue) |
| 2 | 012504-40 | Grip Handle (Blue) w/ Washer |
| 3 | 014936-45 | Roller Repair Kit |
| 4 | 014949-45 | Hose Stop Repair Kit |
| 5 | 014944-45 | 3/8" x 15' Hose Replacement Kit |
| 6 | 014933-45 | Small Stainless Steel Spring |
| 7 | 014946-45 | 3/8" Swivel Repair Kit |
| 8 | 014948-45 | O-Ring Replacement Kit |
| 9 | 014940-45 | Ratchet Repair Kit |
| 10 | G016652-45 | Epoxy Coated Pivot Bracket |
| 11 | 019191-45K | Hose Reel Bracket Mounting Kit |
| 12 | 019652-40 | 3/8" NPT Live Swivel |



Product Specifications:
 3/8" x 15' Epoxy Coated Open Reel, High Flow Spray Valve w/ Swivel & 345 Degree Epoxy Coated Pivot Deck Mount Bracket w/ Mounting Hardware for Hose Reel to Bracket

Product Compliance:
 NSF 61 Exempt (Non-Potable)
 EPA 2005 Non-Compliant (PRSV)