



# T&S BRASS AND BRONZE WORKS, INC.

2 Saddleback Cove / P.O. Box 1088  
Travelers Rest, SC 29690

Model No.

**B-1454**

Item No.

Travelers Rest, SC: 800-476-4103 • Simi Valley, CA: 800-423-0150 • Fax: 864-834-3518 • www.tsbrass.com

This Space for Architect/Engineer Approval

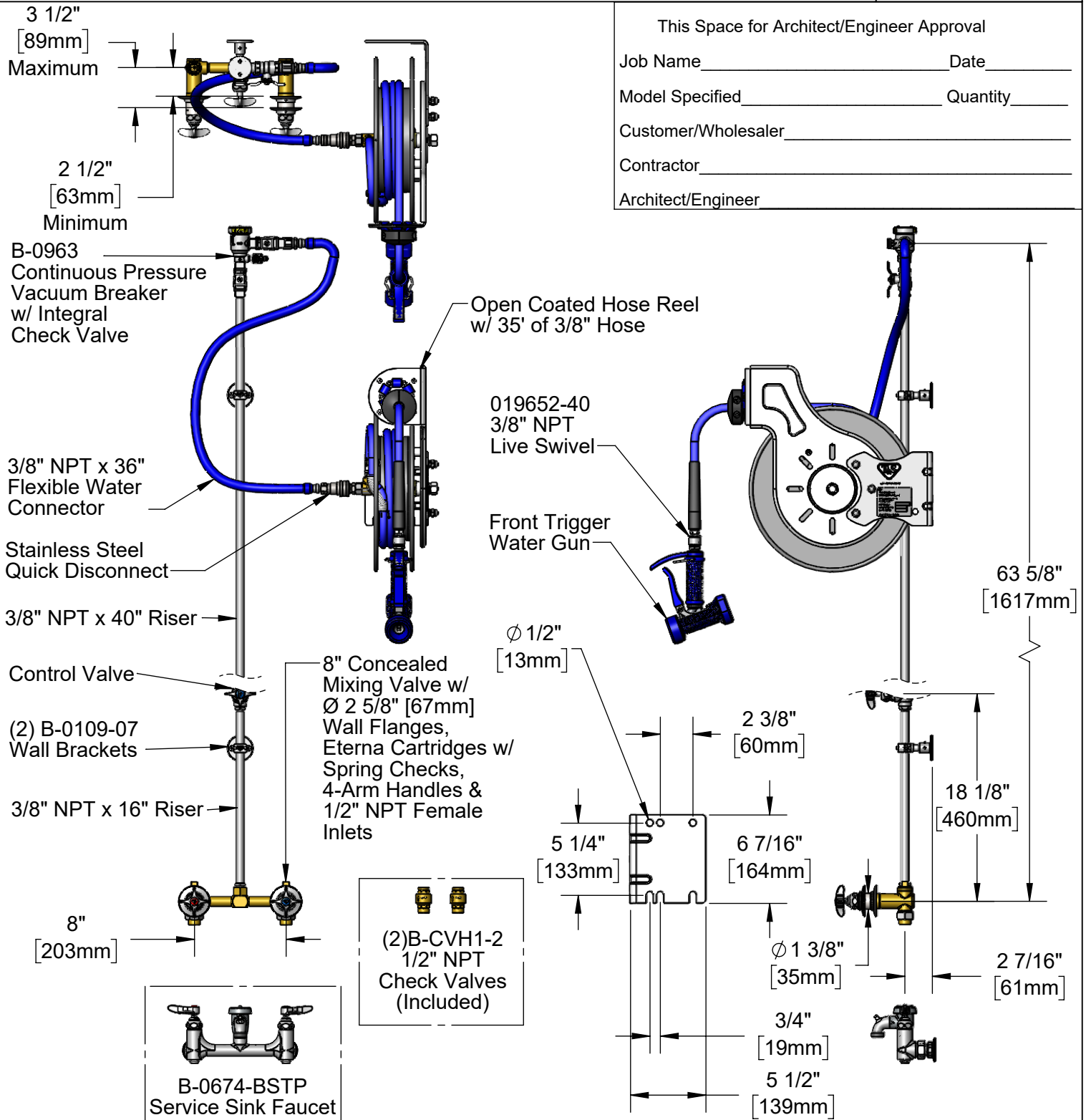
Job Name \_\_\_\_\_ Date \_\_\_\_\_

Model Specified \_\_\_\_\_ Quantity \_\_\_\_\_

Customer/Wholesaler \_\_\_\_\_

Contractor \_\_\_\_\_

Architect/Engineer \_\_\_\_\_



**Product Specifications:**

Open Coated Hose Reel w/ 35' of 3/8" Hose, Blue Front Trigger Water Gun w/ Swivel, Vacuum Breaker, 3/8" NPT Flexible Water Connector, 8" Concealed Wall Mount Mixing Faucet, Control Valve, (2) Check Valves & 8" Service Sink Faucet

**Product Compliance:**

NSF 61 Exempt (Non-Potable)  
2019 DOE PRSV Non-Compliant  
ASSE 1056 (VB)  
ASSE 1001 (VB)



# T&S BRASS AND BRONZE WORKS, INC.

2 Saddleback Cove / P.O. Box 1088  
Travelers Rest, SC 29690

Model No.

**B-1454**

Item No.

Travelers Rest, SC: 800-476-4103 • Simi Valley, CA: 800-423-0150 • Fax: 864-834-3518 • www.tsbrass.com

| ITEM NO. | SALES NO.   | DESCRIPTION  |
|----------|-------------|--|
| 1        | B-1035      | 8" Concealed Wall Mount Mixing Valve                                 |
| 2        | 000368-40   | 3/8" NPT x 16" Riser   |
| 3        | 0RK3        | Control Valve  |
| 4        | 002558-40   | 3/8" NPT x 40" Riser   |
| 5        | B-0963      | 1/2" NPT Continuous Pressure VB w/ Integral Check Valve              |
| 6        | HW-2B-36    | 3/8" NPT x 36" Flexible Water Hose                                   |
| 7        | AW-5B       | 3/8" NPT Quick Disconnect  |
| 8        | 002535-25   | 3/8" NPT Close Nipple  |
| 9        | B-0109-07   | Wall Bracket   |
| 10       | B-CVH1-2    | 1/2" NPT Female Check Valve  |
| 11       | MV-2522-24  | Stainless Steel Water Gun, Front Trigger                             |
| 12       | 001359-40   | 1/2" NPT Male x 3/8" NPT Female Hex Bushing                          |
| 13       | B-7232-05   | Open Coated Hose Reel w/ 35' of 3/8" Hose w/ Front Trigger Water Gun |
| 14       | 015073-40   | Check Valve w/ 1/2" NPT Adapter                                      |
| 15       | B-0674-BSTP | 8" Service Sink w/ Vacuum Breaker & Short Spout w/ Pail Hook         |
| 16       | 019652-40   | 3/8" NPT Live Swivel   |

**Product Specifications:**  
 Open Coated Hose Reel w/ 35' of 3/8" Hose, Blue Front Trigger Water Gun w/ Swivel, Vacuum Breaker, 3/8" NPT Flexible Water Connector, 8" Concealed Wall Mount Mixing Faucet, Control Valve, (2) Check Valves & 8" Service Sink Faucet

**Product Compliance:**  
 NSF 61 Exempt (Non-Potable)  
 2019 DOE PRSV Non-Compliant  
 ASSE 1056 (VB)  
 ASSE 1001 (VB)