



# T&S BRASS AND BRONZE WORKS, INC.

2 Saddleback Cove / P.O. Box 1088  
Travelers Rest, SC 29690

Model No.

**B-1460-SMT**

Item No.

Travelers Rest, SC: 800-476-4103 • Simi Valley, CA: 800-423-0150 • Fax: 864-834-3518 • www.tsbrass.com

This Space for Architect/Engineer Approval

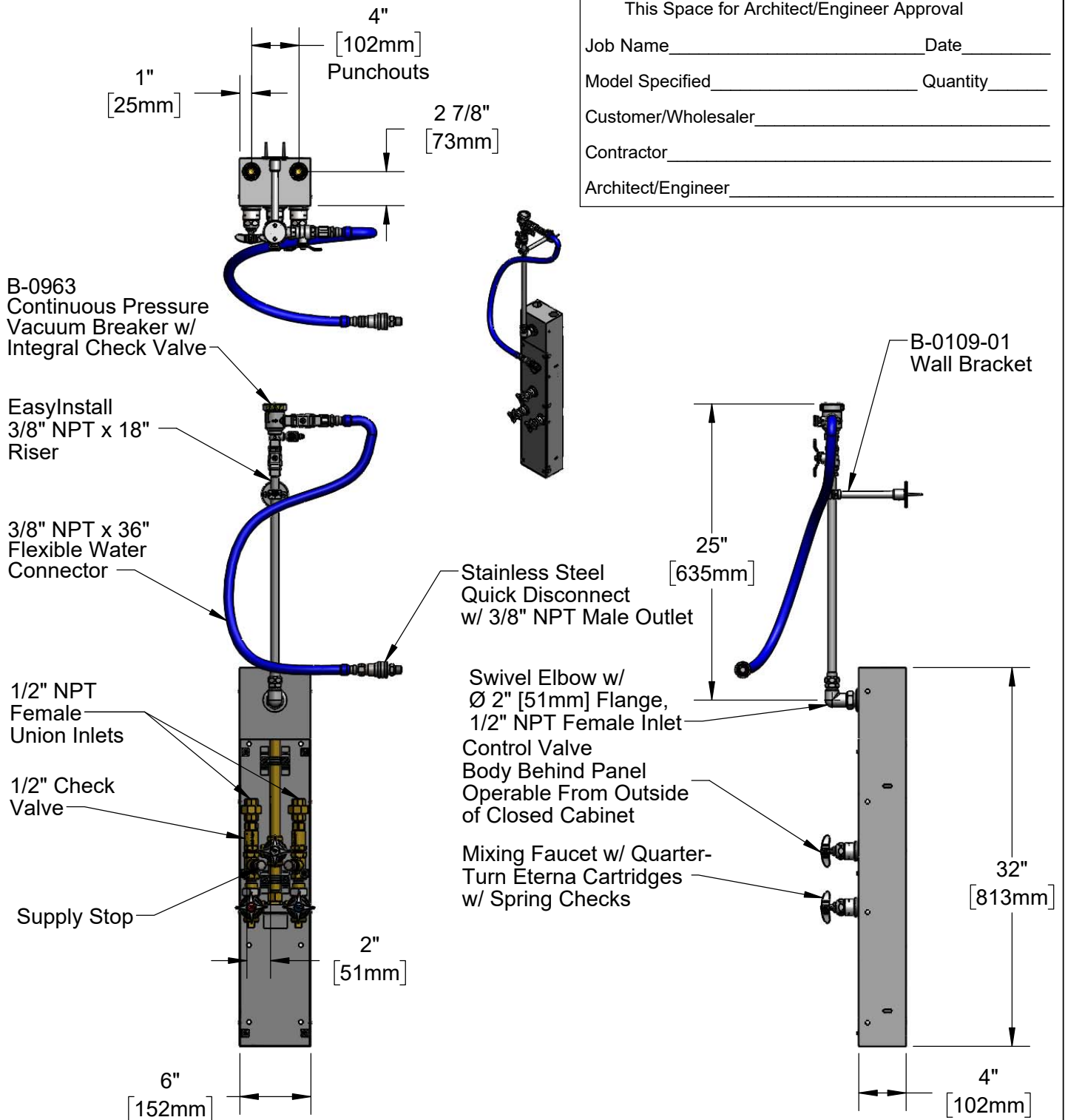
Job Name \_\_\_\_\_ Date \_\_\_\_\_

Model Specified \_\_\_\_\_ Quantity \_\_\_\_\_

Customer/Wholesaler \_\_\_\_\_

Contractor \_\_\_\_\_

Architect/Engineer \_\_\_\_\_



**Product Specifications:**

EasyInstall Hose Reel Surface Mount Cabinet, Concealed Bypass Mixing Valve, Eterna Cartridges w/ Spring Checks, Straight Loose-Key Supply Stops, 1/2" NPT Female Union for top Inlets, Control Valve w/ Eterna Cartridge, 1/2" NPT Riser, Check Valves, Swivel Elbows w/ 1/2" NPT Female Inlet, EasyInstall 3/8" NPT x 18" Riser, 6" Wall Bracket, Continuous Pressure Vacuum Breaker w/ Integral Check Valve, 36" Flexible Water Hose w/ Stainless Steel Quick Disconnect & 3/8" NPT Male Outlet

**Product Compliance:**

NSF 61 Exempt (Non-Portable)  
ASSE 1056 (VB)



# T&S BRASS AND BRONZE WORKS, INC.

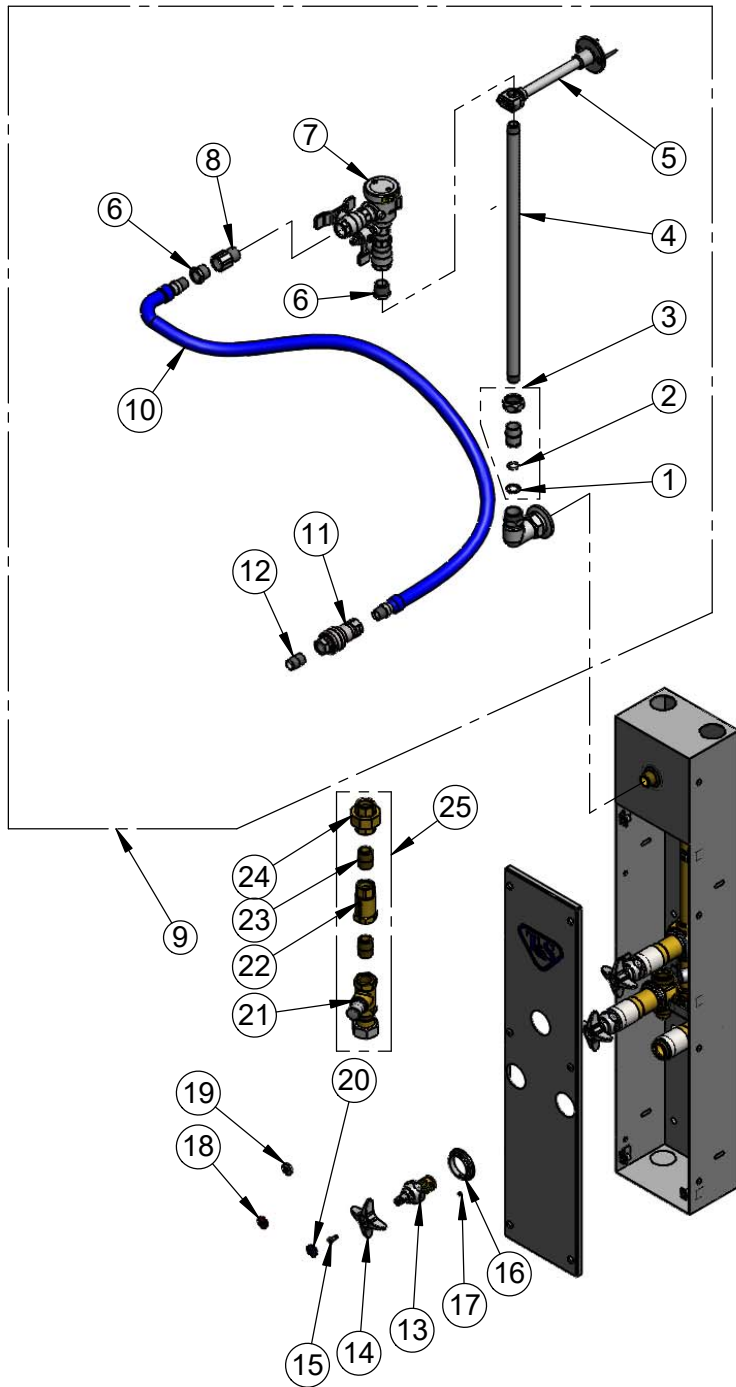
2 Saddleback Cove / P.O. Box 1088  
Travelers Rest, SC 29690

Model No.

**B-1460-SMT**

Item No.

Travelers Rest, SC: 800-476-4103 • Simi Valley, CA: 800-423-0150 • Fax: 864-834-3518 • www.tsbrass.com



ITEM NO.	SALES NO.	DESCRIPTION
1	014200-45	Star Washer, Anti-Rotation
2	001065-45	O-Ring
3	EZ-K	EasyInstall Kit: Nut, Bushing, O-Ring & Lock Washer
4	000369-40	3/8" NPT x 18" Riser
5	B-0109-01	6" Wall Bracket
6	001359-40	Hex Bushing, 1/2" NPT Male x 3/8" NPT Female
7	B-0963	Vacuum Breaker 1/2" NPT Female
8	015073-40	Check Valve w/ 1/2" NPT Adapter
9	0RK-SK	Hose Reel Connector Kit
10	HW-2B-36	3/8" NPT x 36" Flexible Connector Hose
11	AW-5B	3/8" NPT Quick Disconnect
12	002535-25	3/8" NPT Close Nipple
13	012443-40NS	Quarter-Turn Eterna w/ Springs Check, RTC (New Style)
14	002521-45NS	4-Arm Handle (New Style)
15	000925-45	Lab Handle Screw
16	020839-40	Escutcheon
17	000939-45	Escutcheon, Set Screw
18	001193-19NS	Red Button Index, Press In
19	001205-19NS	White Blank Button Index
20	018506-19NS	Blue Button Index, Press In
21	020848-20	Straight Loose Key Stop, Unplated
22	B-CVH1-2	1/2" NPT Check Valve
23	002534-20	1/2" Male Close Nipple, Unplated
24	006649-20	1/2" Union, Unplated
25	020974-40	Inlet Assembly

**Product Specifications:**

EasyInstall Hose Reel Surface Mount Cabinet, Concealed Bypass Mixing Valve, Eterna Cartridges w/ Spring Checks, Straight Loose-Key Supply Stops, 1/2" NPT Female Union for top Inlets, Control Valve w/ Eterna Cartridge, 1/2" NPT Riser, Check Valves, Swivel Elbows w/ 1/2" NPT Female Inlet, EasyInstall 3/8" NPT x 18" Riser, 6" Wall Bracket, Continuous Pressure Vacuum Breaker w/ Integral Check Valve, 36" Flexible Water Hose w/ Stainless Steel Quick Disconnect & 3/8" NPT Male Outlet

**Product Compliance:**

NSF 61 Exempt (Non-Portable)  
ASSE 1056 (VB)