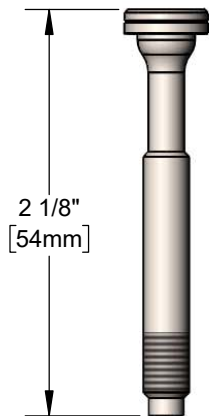
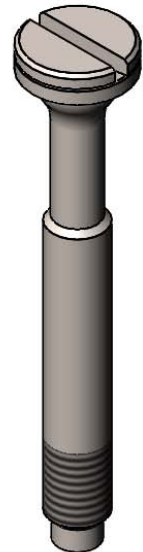




**Architect/Engineering Specifications:**

Stainless steel valve stem for T&S stainless steel spray valves. Certified to NSF 61 - Section 9 and NSF 372.

Job Name \_\_\_\_\_  
 Model Specified \_\_\_\_\_ Quantity \_\_\_\_\_  
 Variations Specified \_\_\_\_\_  
 Date \_\_\_\_\_



**Features & Benefits:**

- Squeeze valve stem for T&S stainless steel spray valves
- Materials: Stainless steel

**Product Compliance:**

- NSF 61 - Section 9
- NSF 372 (Low Lead Content)



**Warranty:** One Year (Limited)



**Performance Data:**

- N/A

