



T&S BRASS AND BRONZE WORKS, INC.

2 Saddleback Cove / P.O. Box 1088
Travelers Rest, SC 29690

Model No.

B-0169

Item No.

Travelers Rest, SC: 800-476-4103 • Simi Valley, CA: 800-423-0150 • Fax: 864-834-3518 • www.tsbrass.com

This Space for Architect/Engineer Approval

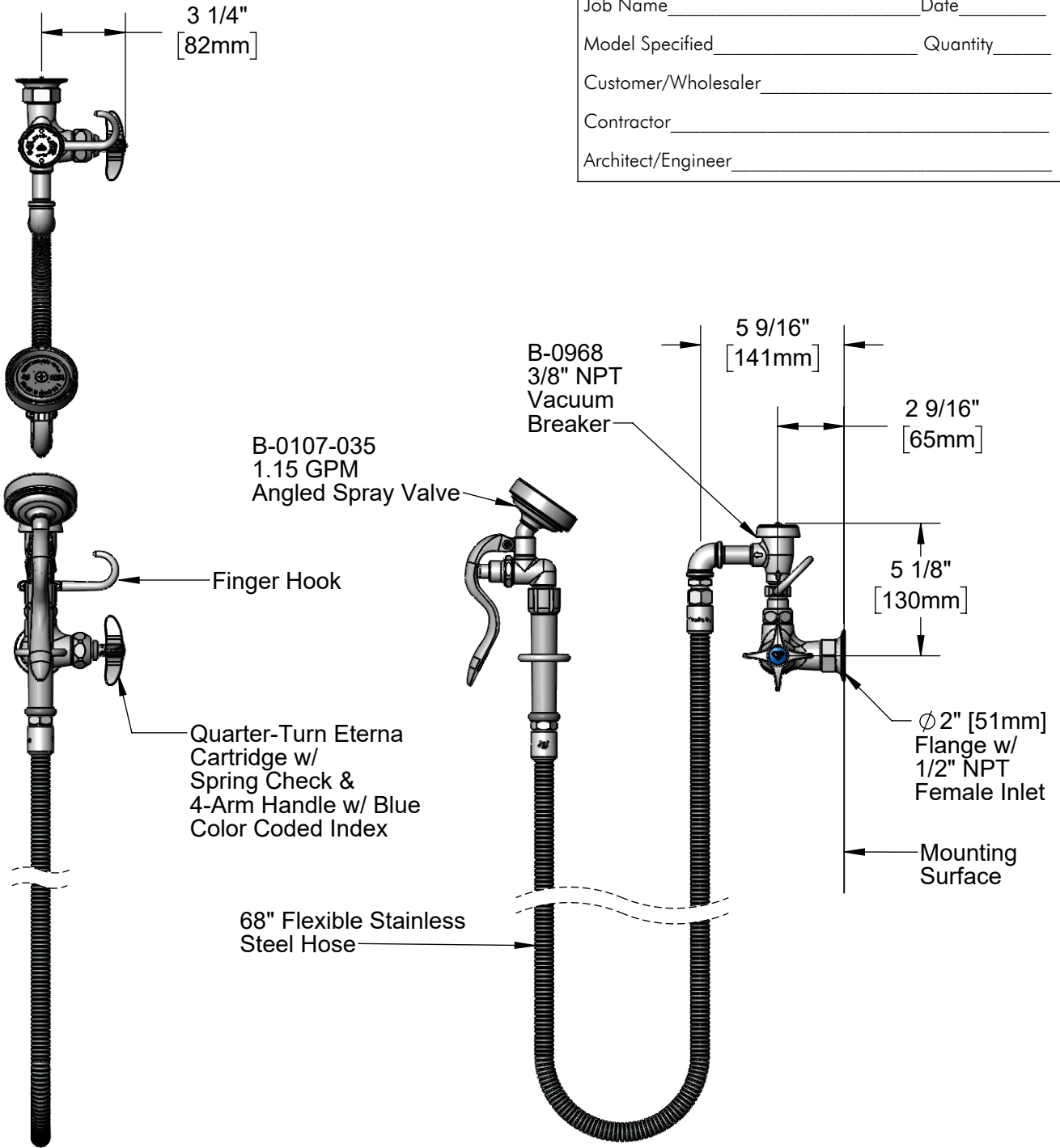
Job Name _____ Date _____

Model Specified _____ Quantity _____

Customer/Wholesaler _____

Contractor _____

Architect/Engineer _____



Product Specifications:

Single Hole, Single Temperature Wall Mount Faucet w/ Quarter-Turn Eterna Cartridge w/ Spring Check, 4-Arm Handle w/ Blue Color Coded Index, 3/8" NPT Vacuum Breaker, 68" Flexible Stainless Steel Hose, 1.15 GPM Angled Spray Valve & 1/2" NPT Female Inlet

Product Compliance:

ASME A112.18.1 / CSA B125.1
NSF 61 - Section 9
NSF 372 (Low Lead Content)
2019 DOE PRSV - Class II
ASSE 1001



T&S BRASS AND BRONZE WORKS, INC.

2 Saddleback Cove / P.O. Box 1088
Travelers Rest, SC 29690

Model No.

B-0169

Item No.

Travelers Rest, SC: 800-476-4103 • Simi Valley, CA: 800-423-0150 • Fax: 864-834-3518 • www.tsbrass.com

ITEM NO.	SALES NO.	DESCRIPTION
1	B-0107-035	1.15 GPM Angled Spray Valve
2	000907-45	Spray Valve Hold Down Ring
3	010476-45	#27 Washer
4	053A	Adapter, 3/8" NPT Male x 3/4-14 UN
5	001355-40	3/8" NPT Elbow
6	000357-40	Nipple, 3/8" NPT x 2"
7	B-0968	3/8" NPT Vacuum Breaker
8	004R	Finger Hook
9	EZ-K	EasyInstall Kit
10	006562-45	O-Ring, Size 2-112
11	014200-45	Star Washer, Anti-Rotation
12	012443-40NS	Quarter-Turn Eterna Cartridge w/ Spring Check, RTC
13	002521-45NS	4-Arm Handle (New Style)
14	000925-45	Lab Handle Screw
15	018506-19NS	Blue Button Index, Press-in
16	B-0068-H2A	68" Flexible Stainless Steel Hose, Less Handle
17	001014-45	Washer, Hose Barrel
18	002987-40	Grip Handle

Product Specifications:
 Single Hole, Single Temperature Wall Mount Faucet w/ Quarter-Turn Eterna Cartridge w/ Spring Check, 4-Arm Handle w/ Blue Color Coded Index, 3/8" NPT Vacuum Breaker, 68" Flexible Stainless Steel Hose, 1.15 GPM Angled Spray Valve & 1/2" NPT Female Inlet

Product Compliance:
 ASME A112.18.1 / CSA B125.1
 NSF 61 - Section 9
 NSF 372 (Low Lead Content)
 2019 DOE PRSV - Class II
 ASSE 1001