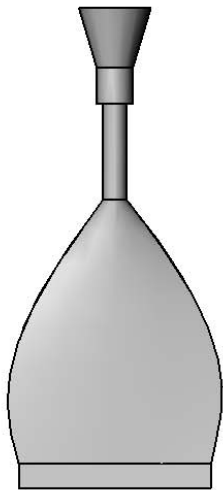




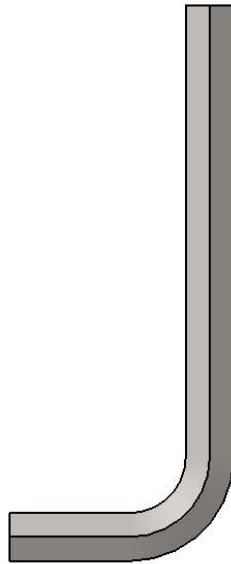
Architect/Engineering Specifications:

EasyInstall retro-fit kit. Fits all standard T&S swivel base faucets

Job Name _____
 Model Specified _____ Quantity _____
 Variations Specified _____
 Date _____



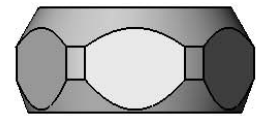
LocTite Capsule



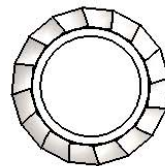
3/8" Hex Key



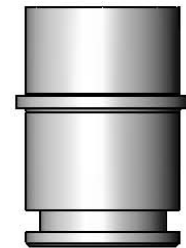
O-Ring



EasyInstall Nut



Lock Washer



EasyInstall Bushing

Features & Benefits:

- EasyInstall retro-fit kit
- (1) LocTie capsule
- (1) 3/8" hex key
- (1) lock washer
- (1) O-ring
- (1) EasyInstall nut
- (1) EasyInstall Bushing

Product Compliance:

- ASME A112.18.1 / CSA B125.1N/A
- NSF 61 - Section 9
- NSF 372 (Low Lead Content)

Warranty: One Year (Limited)

Performance Data:

- N/A

