



**T&S BRASS AND BRONZE WORKS, INC.**  
 2 Saddleback Cove / P.O. Box 1088  
 Travelers Rest, SC 29690

Model No.  
**B-13K**

Item No.

Travelers Rest, SC: 800-476-4103 • Simi Valley, CA: 800-423-0150 • Fax: 864-834-3518 • www.tsbrass.com

This Space for Architect/Engineer Approval

Job Name \_\_\_\_\_ Date \_\_\_\_\_

Model Specified \_\_\_\_\_ Quantity \_\_\_\_\_

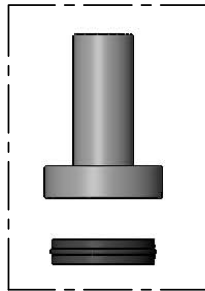
Customer/Wholesaler \_\_\_\_\_

Contractor \_\_\_\_\_

Architect/Engineer \_\_\_\_\_



001479-45  
 Spring  
 (Qty=2)



003164-45  
 Seat Washer  
 Spring Check  
 (Qty=2)



001907-25  
 Removable Eterna Spindle  
 Insert w/ Check, RTC  
 (Qty=1)



001908-25  
 Removable Eterna Spindle  
 Insert w/ Check, LTC  
 (Qty=1)

Product Specifications:  
 Replacement Kit For Eterna Cartridge w/ Spring Check Spindles (RTC & LTC)

Product Compliance:  
 NSF 61 - Section 9  
 NSF 372 (Low Lead Content)