



# T&S BRASS AND BRONZE WORKS, INC.

2 Saddleback Cove / P.O. Box 1088  
Travelers Rest, SC 29690

Model No.

**B-2865-05CRV05**

Item No.

Travelers Rest, SC: 800-476-4103 • Simi Valley, CA: 800-423-0150 • Fax: 864-834-3518 • www.tsbrass.com



**ADA Compliant**

This Space for Architect/Engineer Approval

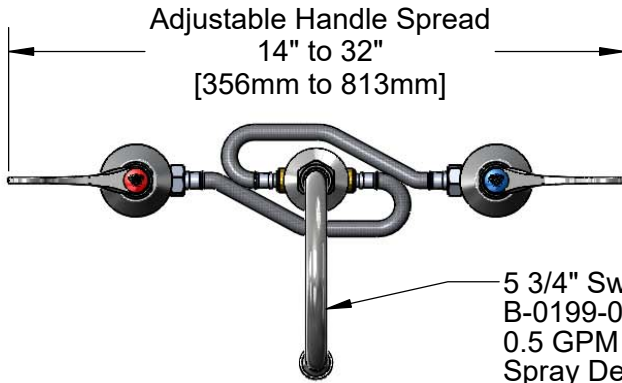
Job Name \_\_\_\_\_ Date \_\_\_\_\_

Model Specified \_\_\_\_\_ Quantity \_\_\_\_\_

Customer/Wholesaler \_\_\_\_\_

Contractor \_\_\_\_\_

Architect/Engineer \_\_\_\_\_



Adjustable Handle Spread  
14" to 32"  
[356mm to 813mm]

5 3/4" Swivel Gooseneck w/  
B-0199-06-N05  
0.5 GPM VR Non-Aerated  
Spray Device. Rigid  
Conversion Requires  
014200-45 Lock Washer  
(Included)



Ø 2"  
[51mm]  
Swivel Deck  
Flange

12" Flexible Stainless  
Steel Hoses

Quarter-Turn  
Cerama Cartridges w/  
Check Valves &  
4" Wrist Action Handles  
w/ Color Coded Indexes &  
VR Screws

4 1/16"  
[104mm]

1 5/16"  
[33mm]  
Maximum  
Thickness

Adjustable Inlet  
6" to 24"  
[152mm to 609mm]

6 3/16"  
[157mm]

Mounting  
Surface

5 3/4"  
[146mm]

10 11/16"  
[271mm]

Ø 2 1/4"  
[57mm]  
Escutcheons

1/2" NPT Male Inlets  
w/ Coupling Nuts

### Rough-In Requirement:

Center Shank: Ø 1" [25mm] Mounting Hole

Hot/Cold Bodies: Ø 1 1/2" [38mm] Mounting Holes

### Product Specifications:

Adjustable Concealed Widespread Mixing Faucet, Quarter-Turn Cerama Cartridges w/ Check Valves, 4" Wrist Action Handles, VR Screws, 5 3/4" Swivel/Rigid Gooseneck w/ 0.5 GPM VR Non-Aerated Spray Device, 12" Flexible Stainless Steel Hose & 1/2" NPT Male Inlets w/ Coupling Nuts

### Product Compliance:

ASME A112.18.1 / CSA B125.1  
NSF 61 - Section 9  
NSF 372 (Low Lead Content)  
ANSI A117.1 (ADA)



# T&S BRASS AND BRONZE WORKS, INC.

2 Saddleback Cove / P.O. Box 1088  
Travelers Rest, SC 29690

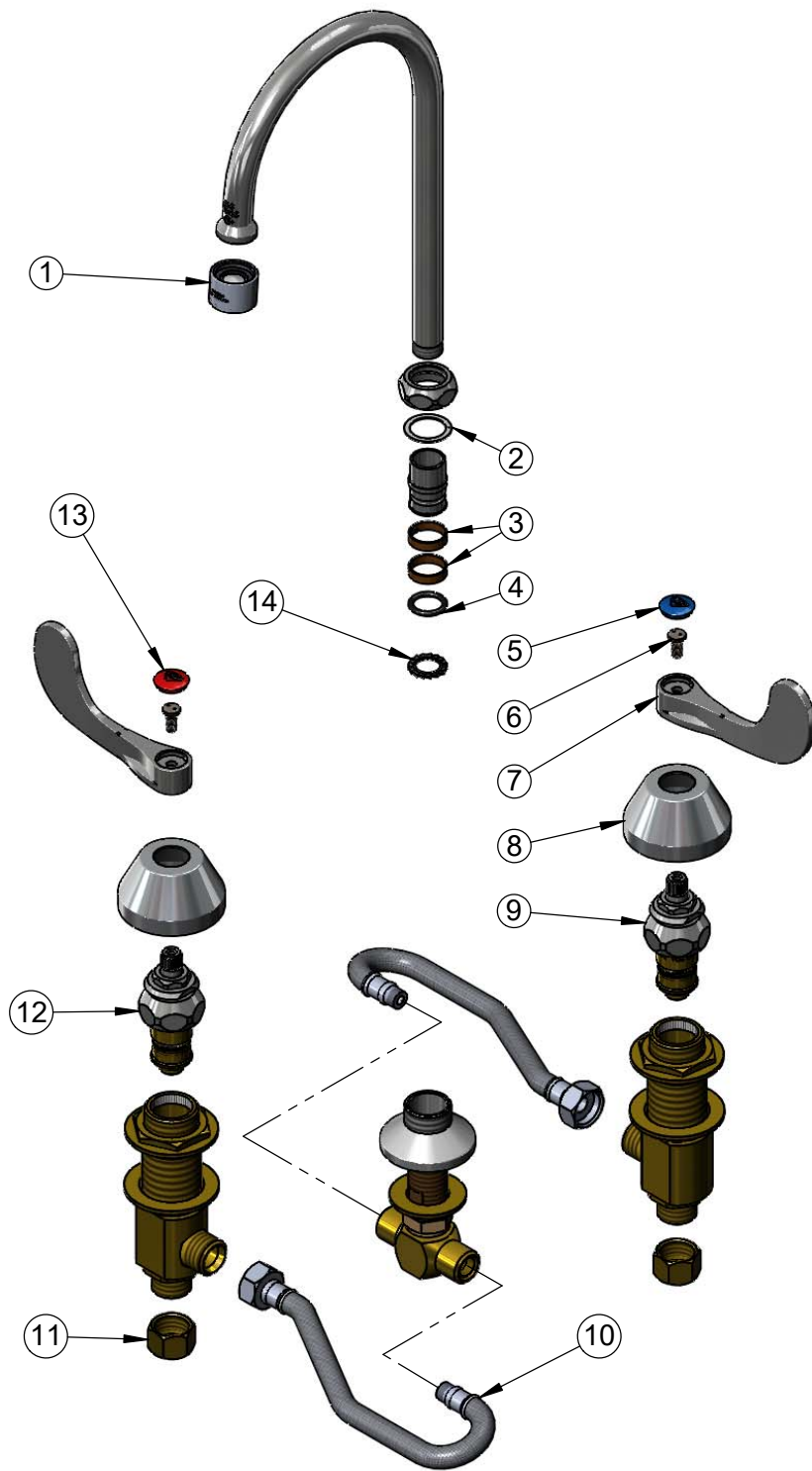
Model No.

**B-2865-05CRV05**

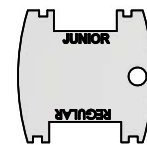
Item No.

Travelers Rest, SC: 800-476-4103 • Simi Valley, CA: 800-423-0150 • Fax: 864-834-3518 • www.tsbrass.com

ITEM NO.	SALES NO.	DESCRIPTION
1	B-0199-06-N05	0.5 GPM VR Non-Aerated Spray Device, 55/64-27 Female
2	009538-45	Swivel Washer
3	011429-45	Swivel Sleeves (2)
4	001074-45	O-Ring
5	018506-19NS	Blue Button Index, Press-in
6	VRS-2	VR Wrist Action Handle Screw (2) w/ Spanner Bit
7	B-WH4-NS	Wrist Action Handle (New Style)
8	001257-40NS	Bell Escutcheon
9	011617-25NS	CWS Quarter-Turn Cerama Cartridge w/ Check Valve, LTC
10	011649-45	12" Stainless Steel Flex Hose
11	000958-20	Coupling Nut
12	011616-25NS	CWS Quarter-Turn Cerama Cartridge w/ Check Valve, RTC
13	001193-19NS	Red Button Index, Press-in
14	014200-45	Star Washer, Anti-Rotation



014075-45  
#10 Spanner Bit  
(Included)



015425-45  
Vandal Resistant Key  
(Included)

**Product Specifications:**

Adjustable Concealed Widespread Mixing Faucet, Quarter-Turn Cerama Cartridges w/ Check Valves, 4" Wrist Action Handles, VR Screws, 5 3/4" Swivel/Rigid Gooseneck w/ 0.5 GPM VR Non-Aerated Spray Device, 12" Flexible Stainless Steel Hose & 1/2" NPT Male Inlets w/ Coupling Nuts

**Product Compliance:**

ASME A112.18.1 / CSA B125.1  
NSF 61 - Section 9  
NSF 372 (Low Lead Content)  
ANSI A117.1 (ADA)