



ADA Compliant

This Space for Architect/Engineer Approval

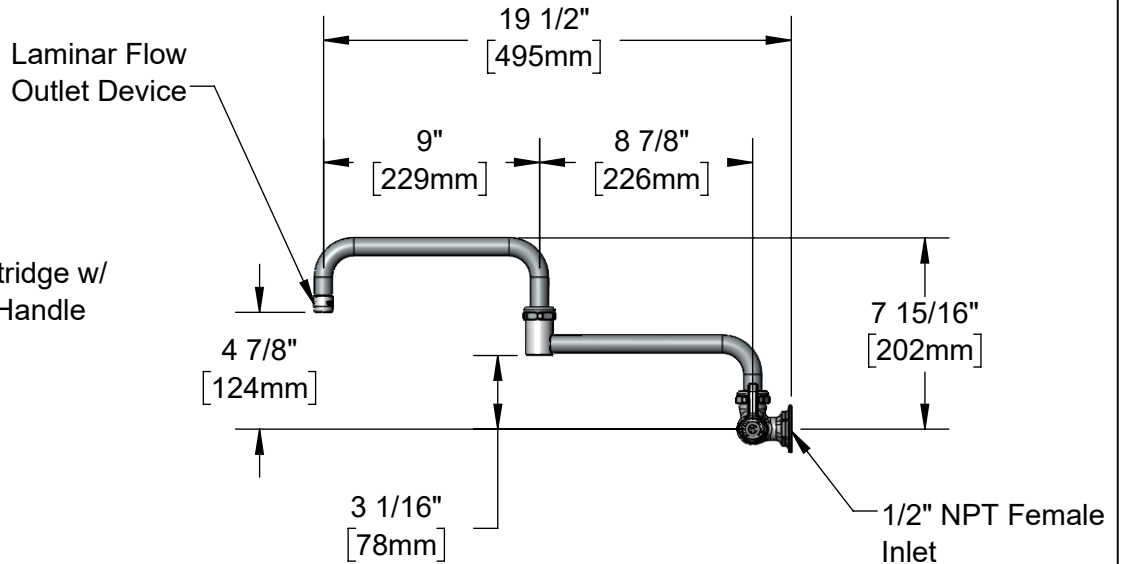
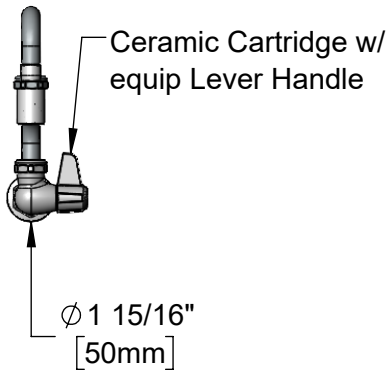
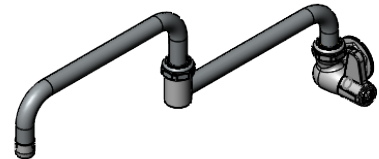
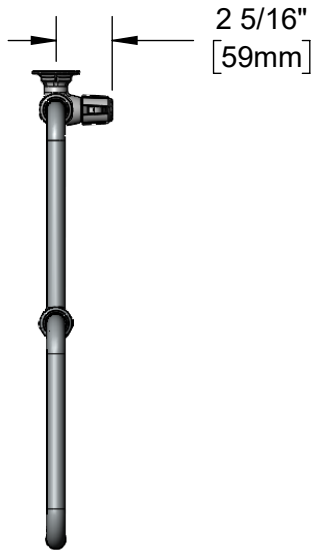
Job Name _____ Date _____

Model Specified _____ Quantity _____

Customer/Wholesaler _____

Contractor _____

Architect/Engineer _____



Model Number

5F-1WLX18DJ

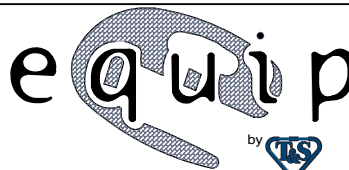
Product Specifications:

Single Supply Wall Mount Faucet, Ceramic Cartridge, 18" Double Joint Swing Nozzle w/ Laminar Flow Device, Lever Handle

Product Compliance:

ASME A112.18.1 / CSA B125.1
NSF 61 - Section 9
NSF 372 (Low Lead Content)
ANSI A117.1 (ADA)

equip
Foodservice
Accessories



2 Saddleback Cove, P.O. Box 1088
Travelers Rest, South Carolina 29690
Phone: 800.891.4808 Fax: 800.868.0084
equip.tsbrass.com

Drawn: TRK

Checked: JRM

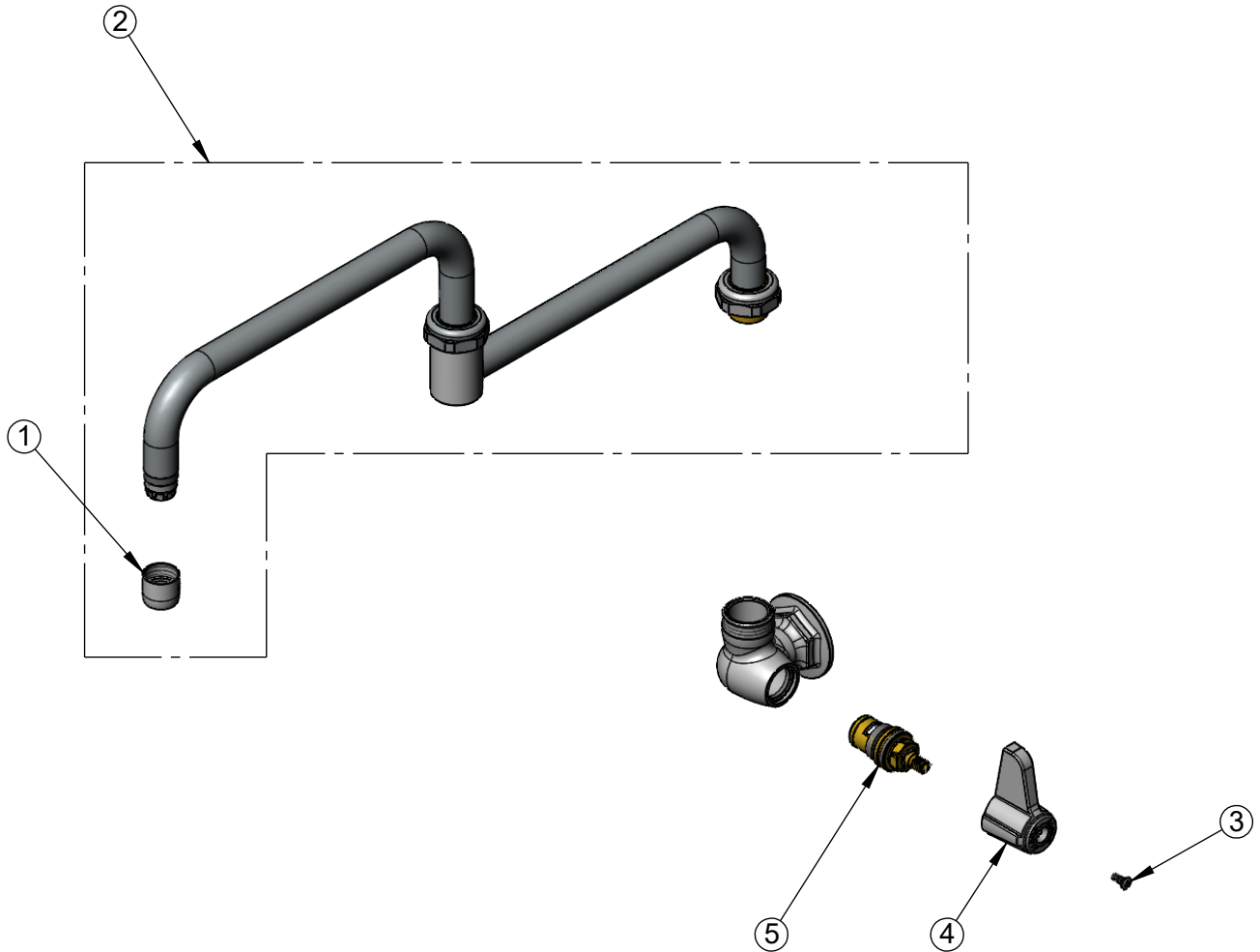
Approved: JHB

Date: 03/11/24

Scale: 1:8

Sheet: 1 of 2

ITEM	SALES NO.	DESCRIPTION
1	014250-45	Laminar Full Flow Outlet Device
2	5DJ-18	equip 18" Double-Joint Swing Nozzle
3	013849-45	Screw, 4mm Metric (10)
4	5-HDL-L	equip Lever Handle
5	013787-45	equip Ceramic Cartridge, RTC



Model Number

5F-1WLX18DJ

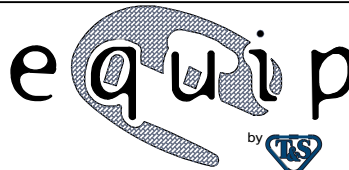
Product Specifications:

Single Supply Wall Mount Faucet, Ceramic Cartridge, 18"
Double Joint Swing Nozzle w/ Laminar Flow Device,
Lever Handle

Product Compliance:

ASME A112.18.1 / CSA B125.1
NSF 61 - Section 9
NSF 372 (Low Lead Content)
ANSI A117.1 (ADA)

equip
Foodservice
Accessories



2 Saddleback Cove, P.O. Box 1088
Travelers Rest, South Carolina 29690
Phone: 800.891.4808 Fax: 800.868.0084
equip.tsbrass.com

Drawn: TRK

Checked: JRM

Approved: JHB

Date: 03/11/24

Scale: NTS

Sheet: 2 of 2