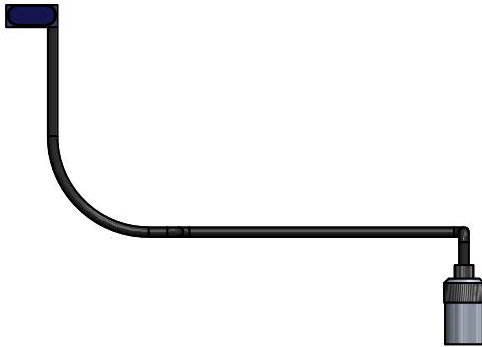




**Architect/Engineering Specifications:**

Angled flat lens with sensor housing, 24" sensor cable and waterproof cable connector.

Job Name \_\_\_\_\_  
 Model Specified \_\_\_\_\_ Quantity \_\_\_\_\_  
 Variations Specified \_\_\_\_\_  
 Date \_\_\_\_\_



**Features & Benefits:**

- Angled flat lense and sensor housing
- Scratch resistant coating
- 24" Sensor Cable
- Waterproof cable connector

**Product Compliance:**

- N/A

**Warranty:** One Year (Limited)

**Performance Data:**

- N/A

