



# T&S BRASS AND BRONZE WORKS, INC.

2 Saddleback Cove / P.O. Box 1088  
Travelers Rest, SC 29690

Model No.

**021047-40**

Item No.

Travelers Rest, SC: 800-476-4103 • Simi Valley, CA: 800-423-0150 • Fax: 864-834-3518 • www.tsbrass.com

This Space for Architect/Engineer Approval

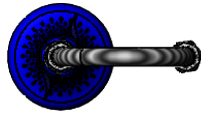
Job Name \_\_\_\_\_ Date \_\_\_\_\_

Model Specified \_\_\_\_\_ Quantity \_\_\_\_\_

Customer/Wholesaler \_\_\_\_\_

Contractor \_\_\_\_\_

Architect/Engineer \_\_\_\_\_



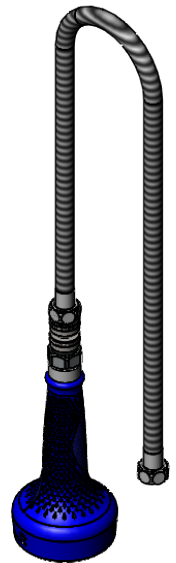
G1/2" SS Ball  
Joint Swivel w/  
Washer Included

30" Stainless Steel  
Braided Hose w/  
1/2" NPSM Threads

7 5/8"  
[194mm]

3 1/4"  
[83mm]

1.07 GPM Insulated  
Sprayer w/ Check Valve



**Product Specifications:**

1.07 GPM Blue Insulated Sprayer, G1/2" SS Ball Joint Swivel, and 30" SS Braided Hose with 1/2" NPSM Threads

**Product Compliance:**

ASME A112.18.1 / CSA B125.1  
NSF 61 - Section 9  
NSF 372 (Low Lead Content)  
2019 DOE PRSV - Class II



# T&S BRASS AND BRONZE WORKS, INC.

2 Saddleback Cove / P.O. Box 1088  
Travelers Rest, SC 29690

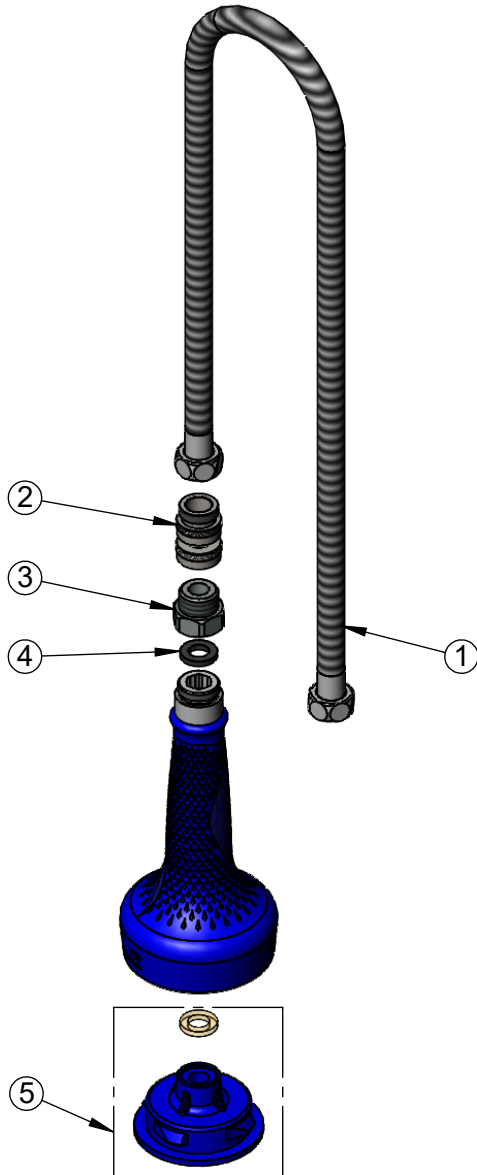
Model No.

**021047-40**

Item No.

Travelers Rest, SC: 800-476-4103 • Simi Valley, CA: 800-423-0150 • Fax: 864-834-3518 • www.tsbrass.com

ITEM NO.	SALES NO.	DESCRIPTION
1	019901-45	30" SS Flex Hose w/ 1/2" NPSM Female Threads & Seals
2	021046-45	SS Ball Joint Swivel w/ Washer
3	005221-25	7/8-20 UN x 1/2" BSPP Adapter
4	001014-45	Washer, Hose Barrel
5	108SF-RK	1.07 GPM Flow Spray Face



**Product Specifications:**

1.07 GPM Blue Insulated Sprayer, G1/2" SS Ball Joint Swivel, and 30" SS Braided Hose with 1/2" NPSM Threads

**Product Compliance:**

ASME A112.18.1 / CSA B125.1  
NSF 61 - Section 9  
NSF 372 (Low Lead Content)  
2019 DOE PRSV - Class II