



T&S BRASS AND BRONZE WORKS, INC.
 2 Saddleback Cove / P.O. Box 1088
 Travelers Rest, SC 29690

Model No.
B-0126-VBR

Item No.

Travelers Rest, SC: 800-476-4103 • Simi Valley, CA: 800-423-0150 • Fax: 864-834-3518 • www.tsbrass.com

This Space for Architect/Engineer Approval

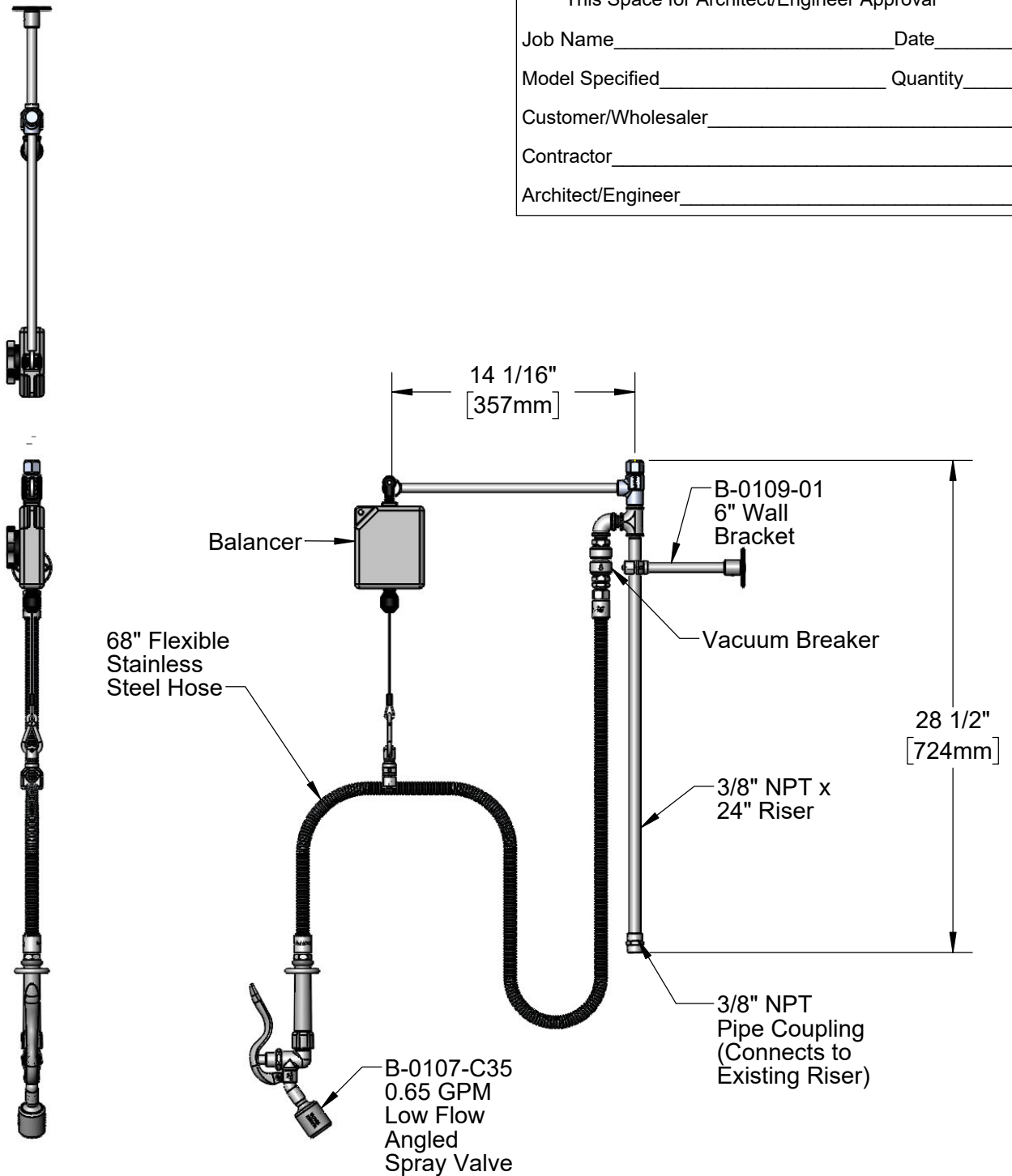
Job Name _____ Date _____

Model Specified _____ Quantity _____

Customer/Wholesaler _____

Contractor _____

Architect/Engineer _____



Product Specifications:

Pre-Rinse Unit: Retro-Fit w/ 24" Riser, 6" Wall Bracket, 14" Extension Arm, Balancer & 68" Flexible Stainless Steel Hose w/ 0.65 GPM Low Flow Angled Spray Valve

Product Compliance:

ASME A112.18.1 / CSA B125.1
 NSF 61 - Section 9
 NSF 372 (Low Lead Content)
 CSA B64.8 (VB)
 2019 DOE PRSV - Class I

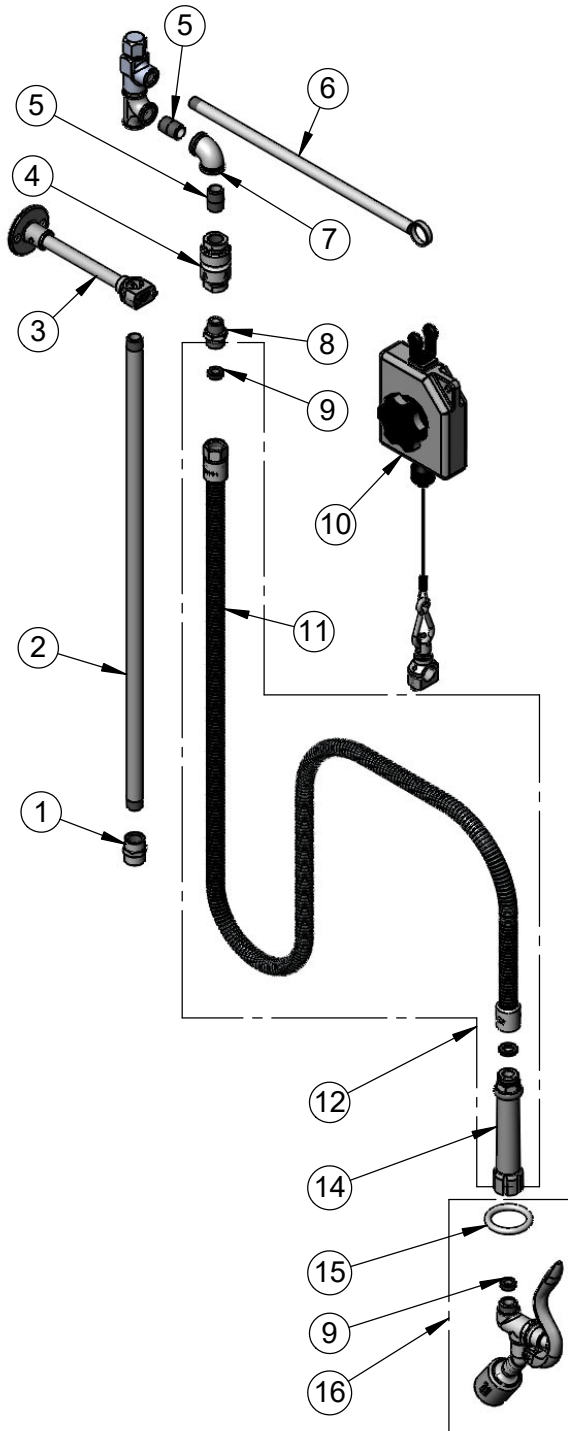


T&S BRASS AND BRONZE WORKS, INC.
 2 Saddleback Cove / P.O. Box 1088
 Travelers Rest, SC 29690

Model No.
B-0126-VBR

Item No.

Travelers Rest, SC: 800-476-4103 • Simi Valley, CA: 800-423-0150 • Fax: 864-834-3518 • www.tsbrass.com



ITEM NO.	SALES NO.	DESCRIPTION
1	001769-40	Coupling, 3/8" NPT
2	000372-40	3/8" NPT x 24" Riser
3	B-0109-01	6" Wall Bracket
4	B-0970-FE	3/8" NPT Vacuum Breaker
5	002535-25	3/8" Close Nipple
6	005252-40	Extension Arm, Chrome Plated
7	001355-40	Elbow, 3/8" NPT
8	053A	Adapter, 3/8" NPT Male
9	010476-45	#27 Washer
10	005311-40	Balancer
11	B-0068-H2A	68" Flexible Stainless Steel Hose, Less Handle
12	B-0068-H	68" Flexible Stainless Steel Hose
13	001014-45	Washer, B-0100 Hose Barrel
14	002987-40	Grip Handle
15	000907-45	Spray Valve Hold Down Ring
16	B-0107-C35	0.65 GPM Low Flow Angled Spray Valve

Product Specifications:

Pre-Rinse Unit: Retro-Fit w/ 24" Riser, 6" Wall Bracket, 14" Extension Arm, Balancer & 68" Flexible Stainless Steel Hose w/ 0.65 GPM Low Flow Angled Spray Valve

Product Compliance:

ASME A112.18.1 / CSA B125.1
 NSF 61 - Section 9
 NSF 372 (Low Lead Content)
 CSA B64.8 (VB)
 2019 DOE PRSV - Class I