



Architect/Engineering Specifications:

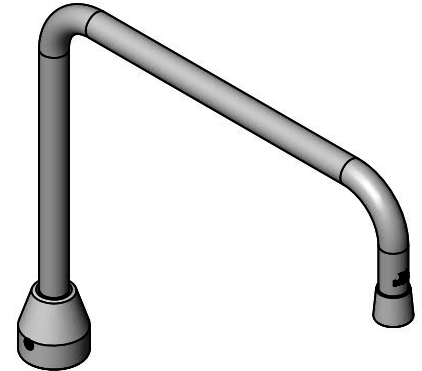
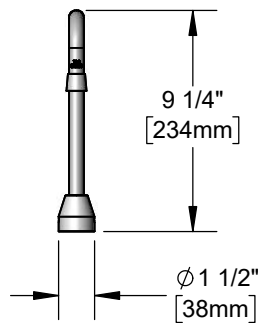
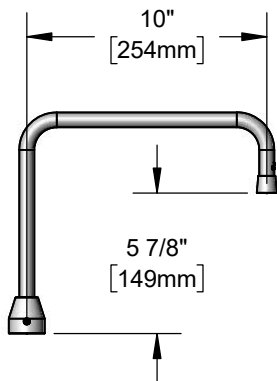
High-arc swivel gooseneck with diverter cover and bell adapter. Certified to ASME A112.18.1 / CSA B125.1, NSF 61 - Section 9 and NSF 372.

Job Name _____

Model Specified _____ Quantity _____

Variations Specified _____

Date _____



Features & Benefits:

- 10" high-arc swivel gooseneck w/ diverter cover and bell adapter
- Material: Chrome plated brass tubular spout

Product Compliance:

- ASME A112.18.1 / CSA B125.1
- NSF 61 - Section 9
- NSF 372 (Low Lead Content)



Warranty: One Year (Limited)



Performance Data:

- Pressure: 20 - 125 psi
- Temperature: 40 °F - 140 °F
- Flow Rate: 3.86 GPM @ 60 psi

