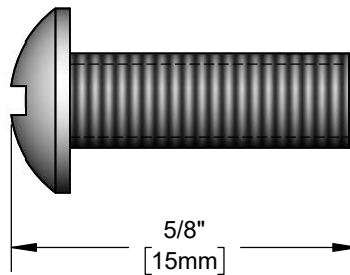
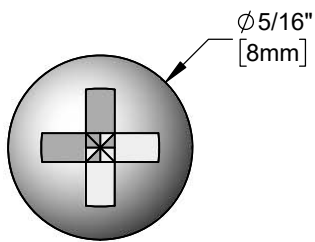
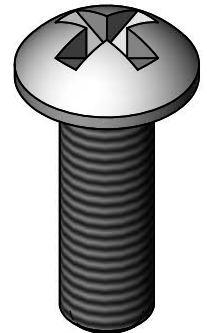




Architect/Engineering Specifications:

Stainless steel screw with #8-32 UNC male thread. Certified to NSF 61 - Section 9 and NSF 372 (Low Lead Content).

Job Name _____
 Model Specified _____ Quantity _____
 Variations Specified _____
 Date _____



Features & Benefits:

- Screw for Eterna cartridge
- #8-32 UNC male thread
- Material: Stainless steel

Product Compliance:

- NSF 61 - Section 9
- NSF 372 (Low Lead Content)

Warranty: One Year (Limited)

Performance Data:

- N/A

