



**T&S BRASS AND BRONZE WORKS, INC.**

2 Saddleback Cove / P.O. Box 1088  
Travelers Rest, SC 29690

Model No.

**B-0163**

Item No.

Travelers Rest, SC: 800-476-4103 • Simi Valley, CA: 800-423-0150 • Fax: 864-834-3518 • www.tsbrass.com

This Space for Architect/Engineer Approval

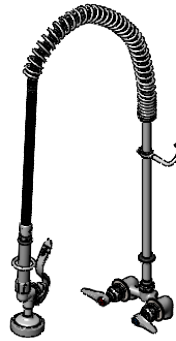
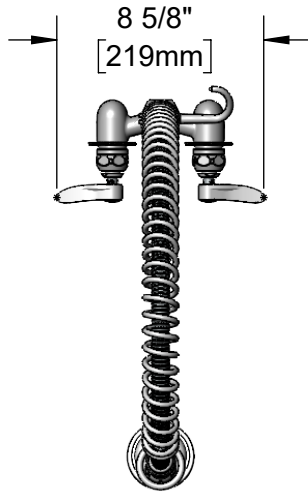
Job Name \_\_\_\_\_ Date \_\_\_\_\_

Model Specified \_\_\_\_\_ Quantity \_\_\_\_\_

Customer/Wholesaler \_\_\_\_\_

Contractor \_\_\_\_\_

Architect/Engineer \_\_\_\_\_



44" Flexible Stainless Steel Hose w/ Spring & Spray Valve

Items Not Shown for Clarity

Finger Hook

3/8" NPT x 18" Riser

B-0107 Spray Valve  
1.15 GPM

Quarter-Turn Eterna Cartridges w/ Spring Checks & Lever Handles w/ Color Coded Indexes

1/2" NPT [13mm] Female Inlets

Rubber Grommet for Backsplash Installation

4" [102mm]

3 5/8" [93mm]

1 1/16" [27mm] To Outlet

Mounting Surface

3/16" [5mm] Maximum Thickness

14 3/16" [361mm]

33 3/16" [844mm]

1 1/4" [31mm] To Inlet

Rough-In Requirement:  
(2)  $\phi$  1 1/8" [29mm] Mounting Holes

Product Specifications:

4" Concealed Wall Mount Pre-Rinse Mixing Faucet, Quarter-Turn Eterna Cartridges with Spring Checks, Lever Handles, EasyInstall 18" Riser, 44" Flexible Stainless Steel Hose, 1.15 GPM Spray Valve & 1/2" NPT Female Inlets

Product Compliance:

ASME A112.18.1 / CSA B125.1  
NSF 61 - Section 9  
NSF 372 (Low Lead Content)  
2019 DOE PRSV - Class II



# T&S BRASS AND BRONZE WORKS, INC.

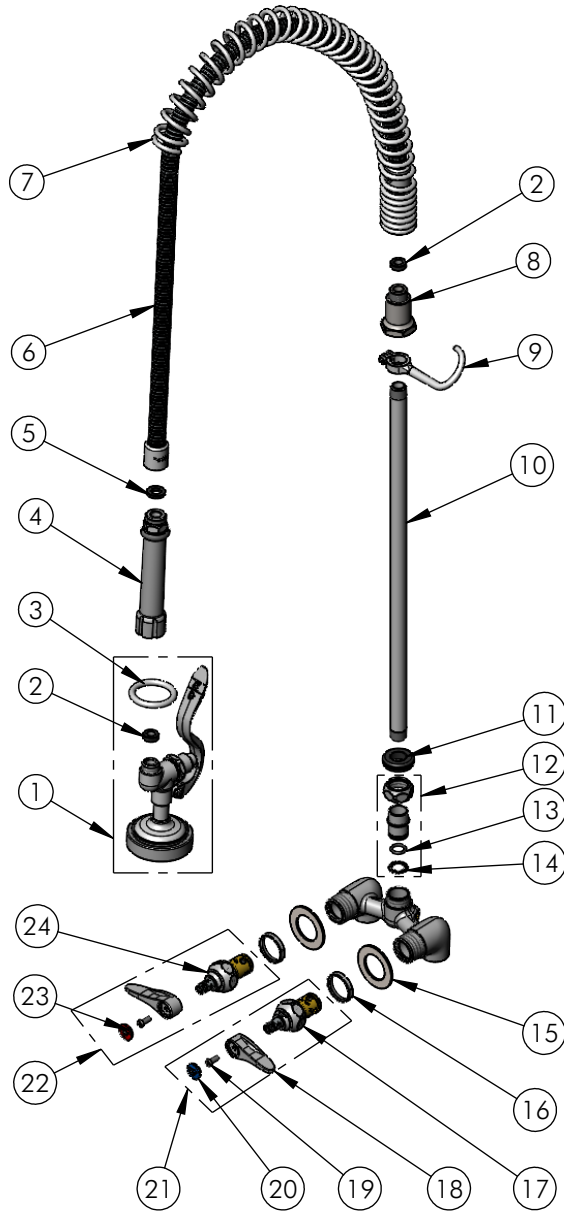
2 Saddleback Cove / P.O. Box 1088  
Travelers Rest, SC 29690

Model No.

**B-0163**

Item No.

Travelers Rest, SC: 800-476-4103 • Simi Valley, CA: 800-423-0150 • Fax: 864-834-3518 • www.tsbrass.com



ITEM NO.	SALES NO.	DESCRIPTION
1	B-0107	1.15 GPM Spray Valve
2	010476-45	#27 Washer
3	000907-45	Spray Valve Hold Down Ring
4	002987-40	Grip Handle
5	001014-45	Washer, Hose Barrel
6	B-0044-H2A	44" Flexible Stainless Steel Hose, Less Handle
7	000888-45	EasyInstall Overhead Spring
8	000821-40	Spring Body
9	004R	Finger Hook
10	000369-40	3/8" NPT x 18" Riser
11	001086-45	Grommet, B-0163 Riser
12	EZ-K	EasyInstall Kit: Nut, Bushing, O-Ring & Lock Washer
13	001065-45	O-Ring
14	014200-45	Star Washer, Anti-Rotation
15	S007365-20	Lock Washer
16	019376-40	Escutcheon Lock Nut
17	012442-40NS	Quarter-Turn Eterna cartridge w/ Spring Check, LTC
18	001638-45NS	Lever Handle (New Style)
19	000925-45	Lab Handle Screw
20	018506-19NS	Blue Button Index, Press-in
21	002711-40NS	Quarter-Turn Eterna cartridge w/ Spring Check, Handle, Blue Index & Screw, LTC
22	002712-40NS	Quarter-Turn Eterna cartridge w/ Spring Check, Handle, Red Index & Screw, RTC
23	001193-19NS	Red Button Index, Press-in
24	012443-40NS	Quarter-Turn Eterna cartridge w/ Spring Check, RTC

**Product Specifications:**

4" Concealed Wall Mount Pre-Rinse Mixing Faucet, Quarter-Turn Eterna Cartridges with Spring Checks, Lever Handles, EasyInstall 18" Riser, 44" Flexible Stainless Steel Hose, 1.15 GPM Spray Valve & 1/2" NPT Female Inlets

**Product Compliance:**

ASME A112.18.1 / CSA B125.1  
NSF 61 - Section 9  
NSF 372 (Low Lead Content)  
2019 DOE PRSV - Class II