



**T&S BRASS AND BRONZE WORKS, INC.**

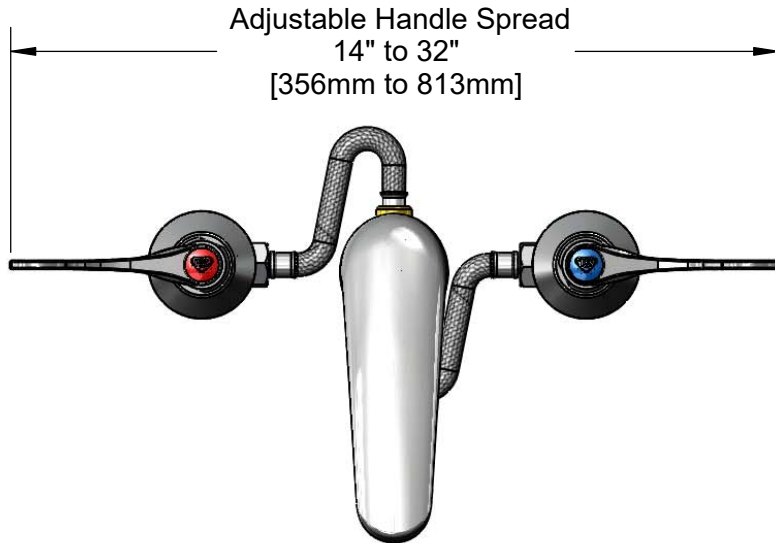
2 Saddleback Cove / P.O. Box 1088  
Travelers Rest, SC 29690

Model No.

**B-2485**

Item No.

Travelers Rest, SC: 800-476-4103 • Simi Valley, CA: 800-423-0150 • Fax: 864-834-3518 • www.tsbrass.com



This Space for Architect/Engineer Approval

Job Name \_\_\_\_\_ Date \_\_\_\_\_

Model Specified \_\_\_\_\_ Quantity \_\_\_\_\_

Customer/Wholesaler \_\_\_\_\_

Contractor \_\_\_\_\_

Architect/Engineer \_\_\_\_\_



**ADA Compliant**



Quarter-Turn  
Eterna Cartridges w/  
Spring Checks &  
4" Wrist Action Handles  
w/ Color Coded Indexes

Ø 2 1/4" [57mm]  
Escutcheons

12" Flexible  
Stainless Steel  
Hoses

4 3/16"  
[106mm]

4"  
[102mm]

5" Cast Spout w/  
B-0199-03  
2.2 GPM Aerator

2"  
[51mm]

Mounting  
Surface

5 1/8"  
[130mm]

1 1/4"  
[31mm]  
Maximum  
Thickness

Adjustable Inlets  
6" to 24"  
[152mm to 610mm]

1/2" NPT Male Inlets  
w/ Brass Coupling Nut

**Rough-In Requirements:**

Center Shank: Ø 1" [25mm] Hole

Hot/Cold Bodies: Ø 1 1/2" [38mm] Holes

**Product Specifications:**

Adjustable Deck Mount Mixing Faucet, Quarter-Turn Eterna Cartridges w/ Spring Checks, 4" Wrist Action Handles, 5" Cast Spout w/ 2.2 GPM Aerator, 12" Stainless Steel Supply Hoses & 1/2" NPT Inlets w/ Brass Coupling Nuts

**Product Compliance:**

ASME A112.18.1 / CSA B125.1  
NSF 61 - Section 9  
NSF 372 (Low Lead Content)  
ANSI A117.1 (ADA)

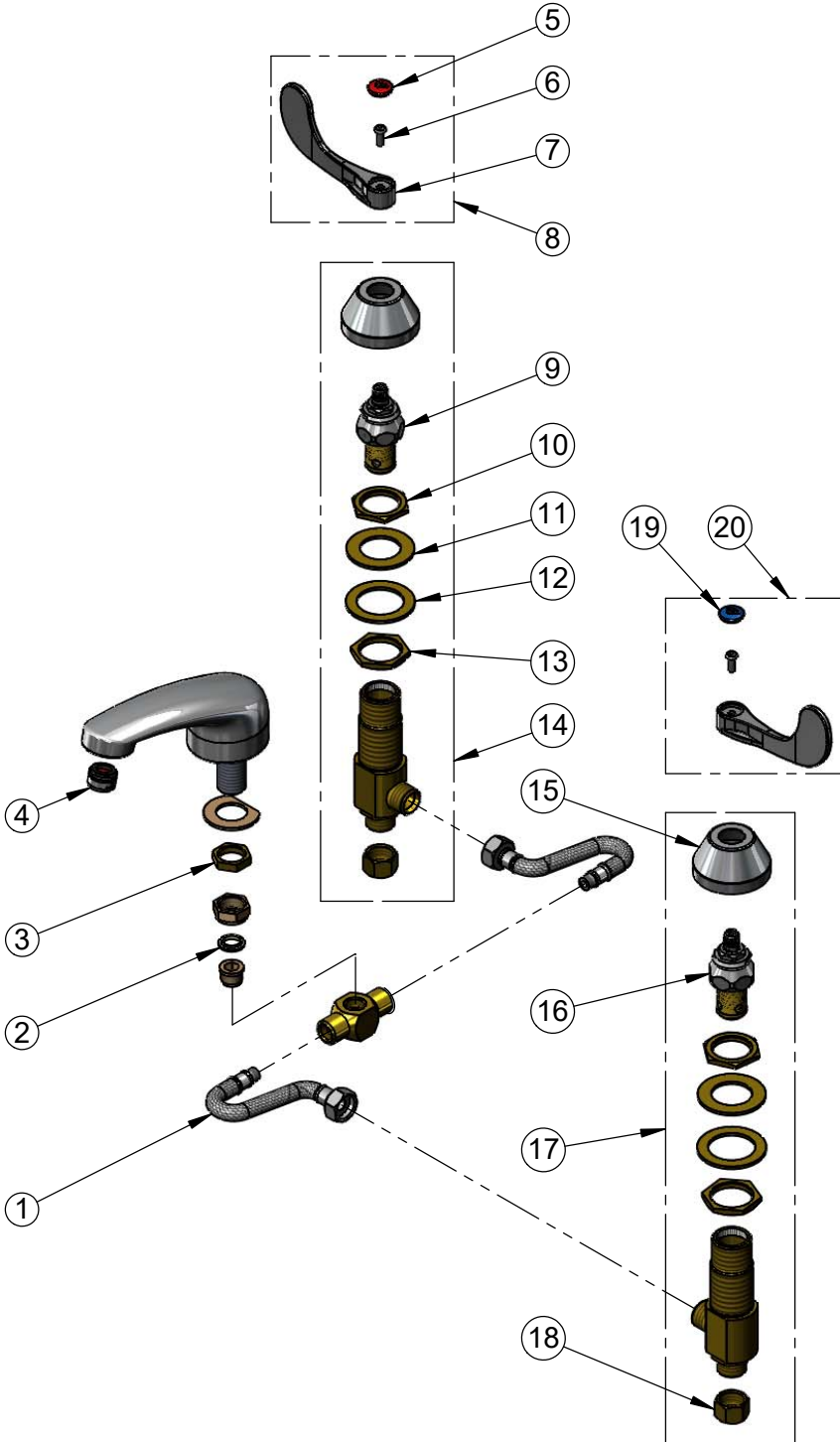


**T&S BRASS AND BRONZE WORKS, INC.**  
 2 Saddleback Cove / P.O. Box 1088  
 Travelers Rest, SC 29690

Model No.  
**B-2485**

Item No.

Travelers Rest, SC: 800-476-4103 • Simi Valley, CA: 800-423-0150 • Fax: 864-834-3518 • www.tsbrass.com



ITEM NO.	SALES NO.	DESCRIPTION
1	011649-45	12" Flexible Stainless Steel Hose
2	012702-45	Cross Body Washer
3	002954-45	Shank Lock Nut
4	B-0199-03	2.2 GPM Aerator
5	001193-19NS	Red Button Index, Press-in
6	000925-45	Lab Handle Screw
7	B-WH4-NS	Wrist Action Handle (New Style)
8	B-WH4H-NS	Wrist Action Handle, Screw & Red Index
9	006478-40NS	CWS Quarter-Turn Eterna Cartridge w/ Spring Check, RTC
10	000959-20	Side Body Top Lock Nut
11	002290-45	Lock Washer
12	001006-45	Washer
13	000960-20	Side Body Bottom Lock Nut
14	162A-NS	B-0850 Side Body - Hot
15	001257-40NS	Bell Escutcheon
16	006477-40NS	CWS Quarter-Turn Eterna Cartridge w/ Spring Check, LTC
17	161A-NS	B-0850 Side Body - Cold
18	000958-20	Coupling Nut
19	018506-19NS	Blue Button Index, Press-in
20	B-WH4C-NS	Wrist Action Handle, Screw & Blue Index

**Product Specifications:**

Adjustable Deck Mount Mixing Faucet, Quarter-Turn Eterna Cartridges w/ Spring Checks, 4" Wrist Action Handles, 5" Cast Spout w/ 2.2 GPM Aerator, 12" Stainless Steel Supply Hoses & 1/2" NPT Inlets w/ Brass Coupling Nuts

**Product Compliance:**

ASME A112.18.1 / CSA B125.1  
 NSF 61 - Section 9  
 NSF 372 (Low Lead Content)  
 ANSI A117.1 (ADA)