



Faucets and Fittings
B-0103-FD10

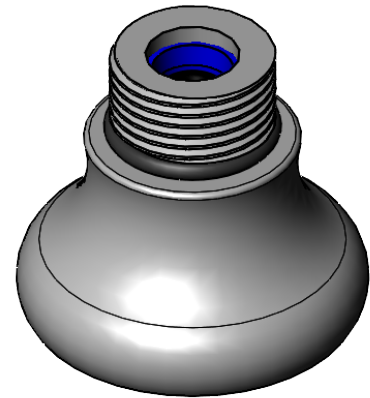
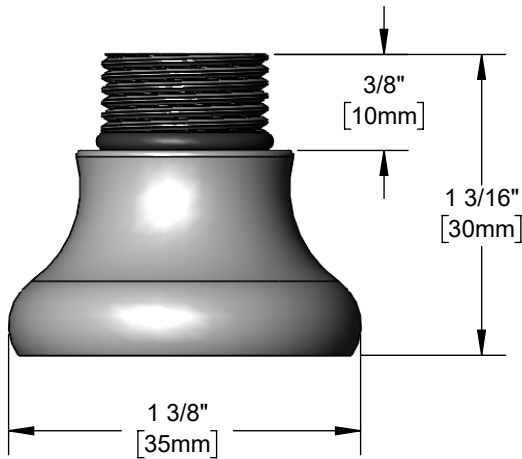
TAG:

Rosespray Outlet

Architect/Engineering Specifications:

Rosespray with multi-laminar (non-aerated) spray pattern, 1.0 GPM flow disc regulator (blue) and 3/8" NPT male thread. Certified to ASME A112.18.1/CSA B125.1, NSF 61-Section 9 and NSF 372.

Job Name _____
 Model Specified _____ Quantity _____
 Variations Specified _____
 Date _____



Features & Benefits:

- Rosespray w/ multi-laminar (non-aerated) spray pattern
- 1.0 GPM flow disc regulator (blue)
- 3/8" NPT male thread
- O-ring included
- Fits all series 2 T&S nozzles
- Material: Brass body

Product Compliance:

- ASME A112.18.1 / CSA B125.1
- NSF 61 - Section 9
- NSF 372 (Low Lead Content)



Warranty: One Year (Limited)

Performance Data:

- Pressure: 20 - 125 psi [1.38 - 8.62 bar]
- Temperature: 40°F - 140°F [4.44°C - 60°C]
- Flow Rate: 1.0 GPM [3.79 L/min] @ 60 psi [4.14 bar]



T&S BRASS AND BRONZE WORKS, INC.



• 2 Saddleback Cove • Travelers Rest, SC 29690
 Ph 800-476-4103 • Fax 864-834-3518
 • Simi Valley, CA • Ph 800-423-0150 • www.tsbrass.com

Date: 08/03/24