



T&S BRASS AND BRONZE WORKS, INC.

2 Saddleback Cove / P.O. Box 1088
Travelers Rest, SC 29690

Model No.

B-0545-F SERIES

Item No.

Travelers Rest, SC: 800-476-4103 • Simi Valley, CA: 800-423-0150 • Fax: 864-834-3518 • www.tsbrass.com

This Space for Architect/Engineer Approval

Job Name _____ Date _____

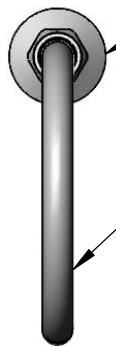
Model Specified _____ Quantity _____

Customer/Wholesaler _____

Contractor _____

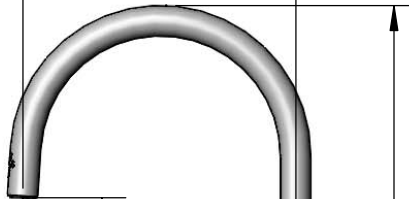
Architect/Engineer _____

Ø2" [51mm]
Swivel Deck Flange

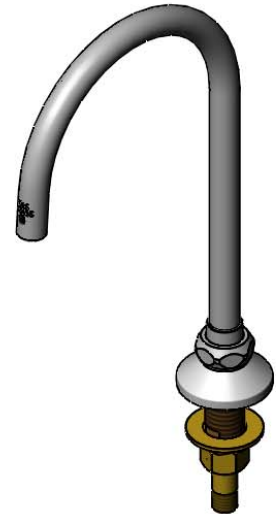


Swivel Gooseneck w/
Plain End Outlet.
Rigid Conversion Requires
014200-45 Lock Washer
(Included).

5 11/16"
[144mm]



10 5/8"
[270mm]

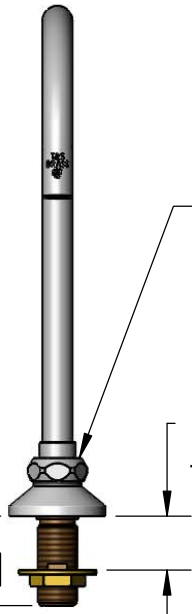


Flow Disc in
Swivel Piece.
Specify Flow Desired
From Chart.

1 1/8"
[29mm]
Maximum
Thickness

6 5/8"
[168mm]

1 7/8"
[47mm]



150A
Tailpiece & Nut
Furnished for
Optional 1/4" NPT
Connection

Model No.	Flow (GPM ±15%)
B-0545-F05	0.5
B-0545-F10	1.0
B-0545-F12	1.2
B-0545-F15	1.5
B-0545-F20	2.2

Product Specifications:
Swivel/Rigid Deck Mount Dummy Gooseneck w/ Plain End Outlet
and Flow Disc Option

Product Compliance:
ASME A112.18.1 / CSA B125.1
NSF 61 - Section 9
NSF 372 (Low Lead Content)

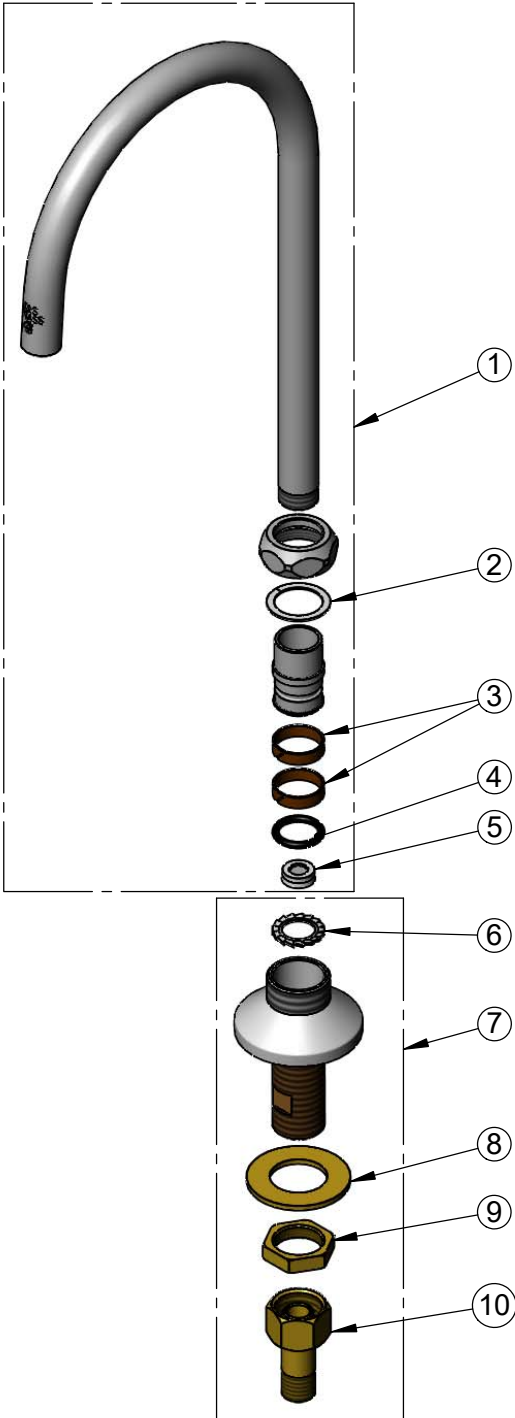


T&S BRASS AND BRONZE WORKS, INC.
 2 Saddleback Cove / P.O. Box 1088
 Travelers Rest, SC 29690

Model No.
B-0545-F SERIES

Item No.

Travelers Rest, SC: 800-476-4103 • Simi Valley, CA: 800-423-0150 • Fax: 864-834-3518 • www.tsbrass.com



ITEM NO.	SALES NO.	DESCRIPTION
1	133XP-FXX	5 11/16" Plain End Swivel Gooseneck w/ Flow Disc (See Chart)
2	009538-45	Swivel Washer
3	011429-45	Swivel Sleeves (2)
4	001074-45	O-Ring
5	FDX	See Chart
6	014200-45	Star Washer, Anti-Rotation
7	B-0431	Swivel Base Deck Mount Flange
8	000999-45	Brass Lock Washer
9	002954-45	Shank Lock Nut
10	150A	1/4" NPT Tailpiece & Nut

Gooseneck Model No.	Flow Disc No.	Flow (GPM)	Insert Color
133XP-F05	FD05	0.5	Lime
133XP-F10	FD10	1.0	Grey
133XP-F12	FD12	1.2	Pink
133XP-F15	FD15	1.5	Green
133XP-F22	FD22	2.2	Yellow

Product Specifications:
 Swivel/Rigid Deck Mount Dummy Gooseneck w/ Plain End Outlet and Flow Disc Option

Product Compliance:
 ASME A112.18.1 / CSA B125.1
 NSF 61 - Section 9
 NSF 372 (Low Lead Content)