



T&S BRASS AND BRONZE WORKS, INC.

2 Saddleback Cove / P.O. Box 1088
Travelers Rest, SC 29690

Model No.

B-0200-44H-VB

Item No.

Travelers Rest, SC: 800-476-4103 • Simi Valley, CA: 800-423-0150 • Fax: 864-834-3518 • www.tsbrass.com

This Space for Architect/Engineer Approval

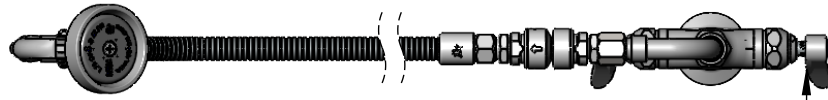
Job Name _____ Date _____

Model Specified _____ Quantity _____

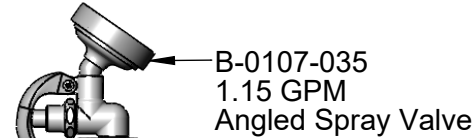
Customer/Wholesaler _____

Contractor _____

Architect/Engineer _____



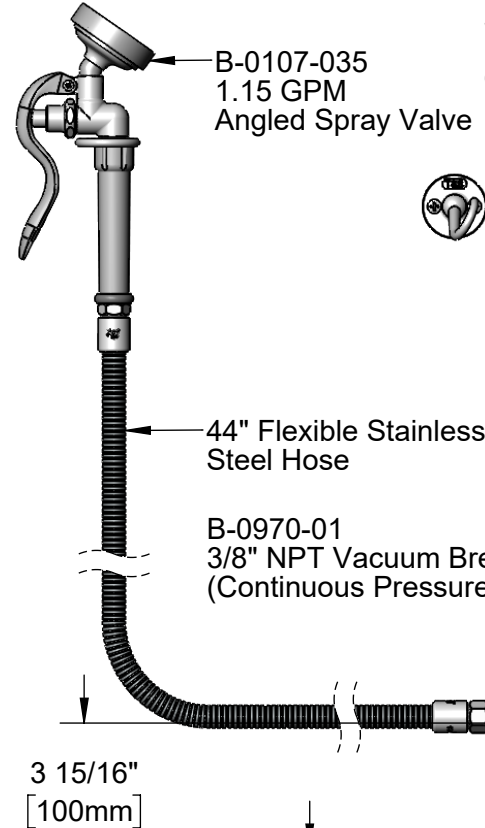
Quarter-Turn
Eterna Cartridges w/
Spring Checks &
Lever Handles w/
Color Coded Indexes



B-0107-035
1.15 GPM
Angled Spray Valve



Wall Hook w/
Mounting Screws



44" Flexible Stainless
Steel Hose

B-0970-01
3/8" NPT Vacuum Breaker
(Continuous Pressure)

3 15/16"
[100mm]

2 1/16"
[53mm]

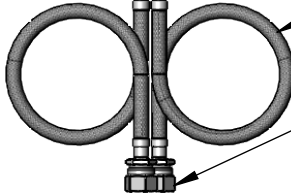
90° Swivel
Adapter Arm

Swivel Joint

7 7/16"
[189mm]

Mounting
Surface

Ø 2 1/4" [57mm] Flange w/
Ø 1 1/8" [29mm] Shank



18" Flexible
Stainless Steel
Supply Hoses

Compression Fittings
for 5/8" O.D. Copper Tubing
(Remove Compression Nut
for 1/2" NPSM Male)



1 7/8"
[48mm]
Maximum
Thickness

Rough-In Requirement:
Ø 1 1/2" [38mm] Mounting Hole

Product Specifications:

Single Hole Deck Mount Mixing Faucet, Quarter-Turn Eterna Cartridges w/ Spring Checks, 90° Swivel Adapter, 44" Flexible Stainless Steel Hose, 1.15 GPM Angled Spray Valve, 3/8" NPT Vacuum Breaker, Wall Hook & 18" Flexible Stainless Steel Supply Hoses w/ 1/2" NPSM Male Inlets

Product Compliance:

ASME A112.18.1 / CSA B125.1
NSF 61 - Section 9
NSF 372 (Low Lead Content)
2019 DOE PRSV - Class II
CSA B64.8



T&S BRASS AND BRONZE WORKS, INC.

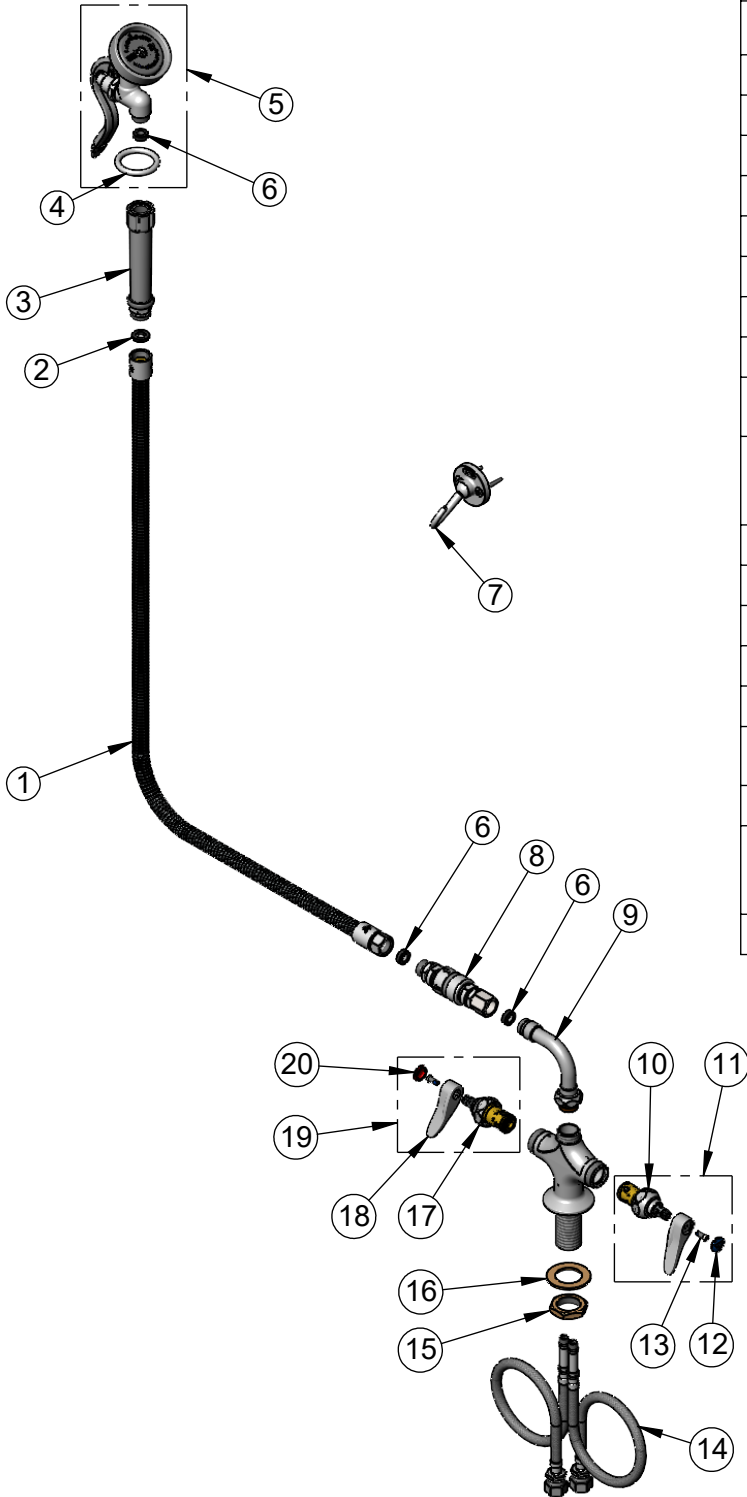
2 Saddleback Cove / P.O. Box 1088
Travelers Rest, SC 29690

Model No.

B-0200-44H-VB

Item No.

Travelers Rest, SC: 800-476-4103 • Simi Valley, CA: 800-423-0150 • Fax: 864-834-3518 • www.tsbrass.com



| ITEM NO. | SALES NO. | DESCRIPTION |
|----------|-------------|--|
| 1 | B-0044-H2A | 44" Flexible Stainless Steel Hose, Less Handle |
| 2 | 001014-45 | Washer, Hose Barrel |
| 3 | 002987-40 | Grip Handle |
| 4 | 000907-45 | Spray Valve Hold Down Ring |
| 5 | B-0107-035 | 1.15 GPM Angled Spray Valve |
| 6 | 010476-45 | #27 Washer |
| 7 | B-0104-D | Dummy Wall Hook |
| 8 | B-0970-01 | 3/8" NPT Vacuum Breaker |
| 9 | 034A | 90° Swivel Adapter Arm |
| 10 | 012442-40NS | Quarter-Turn Eterna Cartridge w/ Spring Check, LTC |
| 11 | 002711-40NS | Quarter-Turn Eterna Cartridge w/ Spring Check, Handle, Blue Index & Screw, LTC |
| 12 | 018506-19NS | Blue Button Index, Press-in |
| 13 | 000925-45 | Lab Handle Screw |
| 14 | 012534-45 | 18" Flexible Supply Hose (2) |
| 15 | 000965-45 | Lock Nut |
| 16 | 002290-45 | Lock Washer |
| 17 | 012443-40NS | Quarter-Turn Eterna Cartridge w/ Spring Check, RTC |
| 18 | 001638-45NS | Lever Handle (New Style) |
| 19 | 002712-40NS | Quarter-Turn Eterna Cartridge w/ Spring Check, Handle, Red Index & Screw, RTC |
| 20 | 001193-19NS | Red Button Index, Press-in |

Product Specifications:

Single Hole Deck Mount Mixing Faucet, Quarter-Turn Eterna Cartridges w/ Spring Checks, 90° Swivel Adapter, 44" Flexible Stainless Steel Hose, 1.15 GPM Angled Spray Valve, 3/8" NPT Vacuum Breaker, Wall Hook & 18" Flexible Stainless Steel Supply Hoses w/ 1/2" NPSM Male Inlets

Product Compliance:

ASME A112.18.1 / CSA B125.1
NSF 61 - Section 9
NSF 372 (Low Lead Content)
2019 DOE PRSV - Class II
CSA B64.8