



T&S BRASS AND BRONZE WORKS, INC.
 2 Saddleback Cove / P.O. Box 1088
 Travelers Rest, SC 29690

Model No.
B-WH4C

Item No.

Travelers Rest, SC: 800-476-4103 • Simi Valley, CA: 800-423-0150 • Fax: 864-834-3518 • www.tsbrass.com

This Space for Architect/Engineer Approval

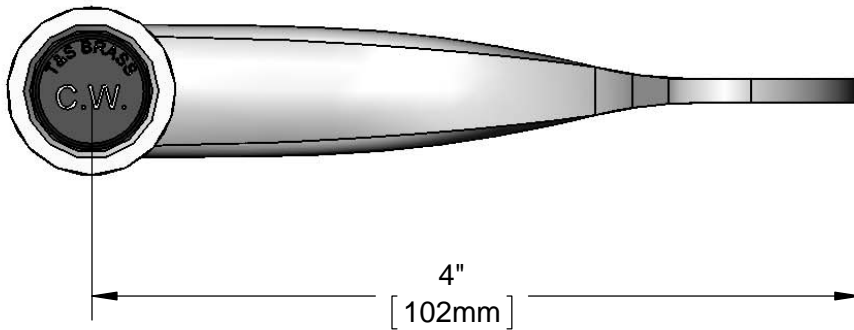
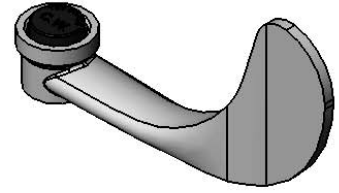
Job Name _____ Date _____


Model Specified _____ Quantity _____

Customer/Wholesaler _____

Contractor _____

Architect/Engineer _____



 Blue (CW) Snap-In Index

 Wrist Action Handle Mounting Screw

3/4"
[18mm]

2 7/16"
[62mm]

13/16"
[20mm]

Product Specifications:
 4" Wrist Action Handle (Polish Chrome) w/ Blue (CW) Snap-In Index & Mounting Screw

Drawn
DHL

Checked
DMH

Approved
JHB

Scale:
1:1

Date:
08/29/12