

3/4-14 UN
Female Outlet

3/4-14 UN
Female Inlet

This Space for Architect/Engineer Approval

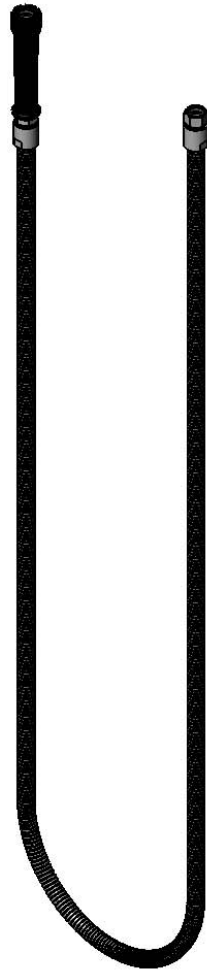
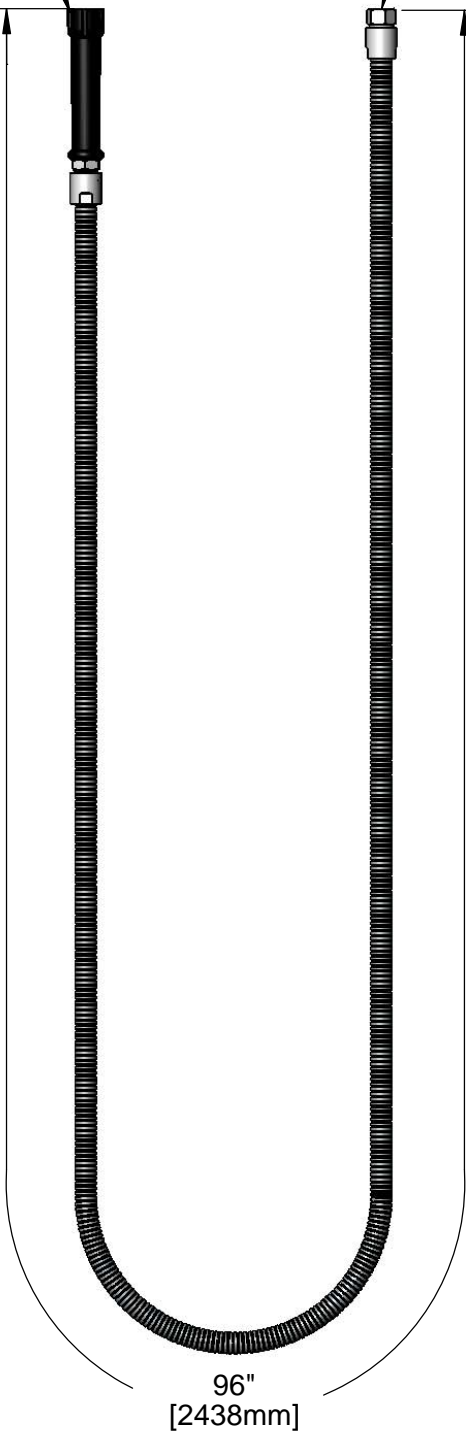
Job Name _____ Date _____

Model Specified _____ Quantity _____

Customer/Wholesaler _____

Contractor _____

Architect/Engineer _____



(2) 010476-45
Washers Furnished
w/ Hose

Model Number

5HSE96

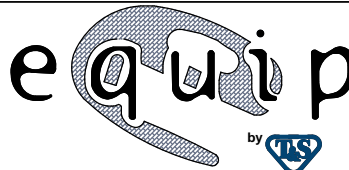
Product Specifications:

96" Flexible Stainless Steel Hose w/ Black Handle & Polyurethane Inner Hose

Product Compliance:

ASME A112.18.1 / CSA B125.1
NSF 61 - Section 9
NSF 372 (Low Lead Content)

equip
Foodservice
Accessories



2 Saddleback Cove, P.O. Box 1088
Travelers Rest, South Carolina 29690
Phone: 800.891.4808 Fax: 800.868.0084
equip.tsbrass.com

Drawn: JBC

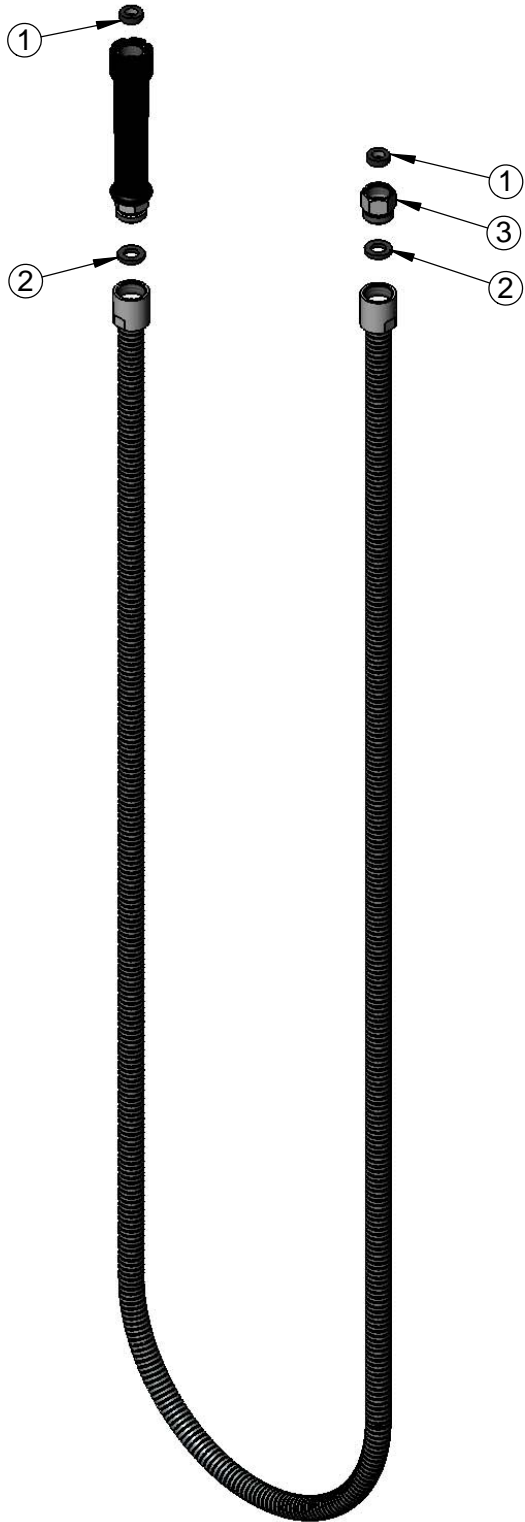
Checked: JRM

Approved: JHB

Date: 08/08/17

Scale: 1:6

Sheet: 1 of 2



| ITEM NO. | SALES NO. | DESCRIPTION |
|----------|-----------|----------------------------------|
| 1 | 010476-45 | #27 Washer |
| 2 | 001014-45 | Washer, B-0100 Hose Barrel |
| 3 | 000729-40 | Nut, 7/8-20 Male x 3/4-14 Female |

Model Number

5HSE96

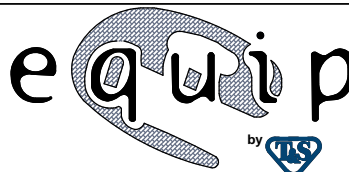
Product Specifications:

96" Flexible Stainless Steel Hose w/ Black Handle & Polyurethane Inner Hose

Product Compliance:

ASME A112.18.1 / CSA B125.1
NSF 61 - Section 9
NSF 372 (Low Lead Content)

equip
Foodservice
Accessories



2 Saddleback Cove, P.O. Box 1088
Travelers Rest, South Carolina 29690
Phone: 800.891.4808 Fax: 800.868.0084
equip.tsbrass.com

Drawn: JBC

Checked: JRM

Approved: JHB

Date: 08/08/17

Scale: NTS

Sheet: 2 of 2