

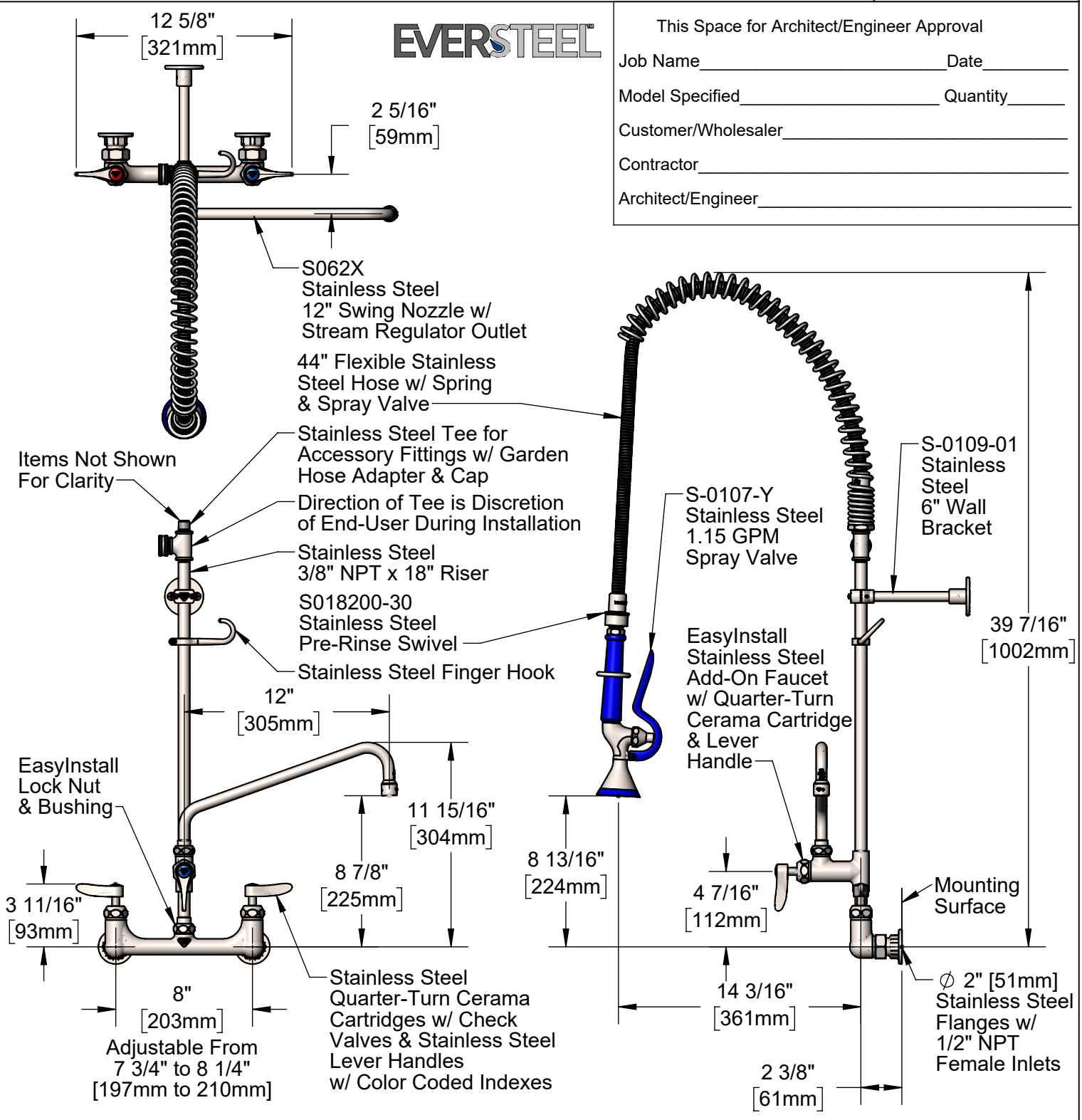


T&S BRASS AND BRONZE WORKS, INC.
 2 Saddleback Cove / P.O. Box 1088
 Travelers Rest, SC 29690

Model No.
S-0133-12-CR-BYS-TGH

Item No.

Travelers Rest, SC: 800-476-4103 • Simi Valley, CA: 800-423-0150 • Fax: 864-834-3518 • www.tsbrass.com



Product Specifications:
 Pre-Rinse Unit: EasyInstall 8" Stainless Steel Wall Mount Mixing Faucet, SS Quarter-Turn Cerama Cartridges w/ Check Valves, SS Lever Handles, SS Add-On Faucet, SS 12" Swing Nozzle, 44" Flexible Stainless Steel Hose, SS Swivel, SS 1.15 GPM Spray Valve, SS Accessory Fitting w/ Garden Hose Adapter & Cap, SS 6" Wall Bracket & SS 1/2" NPT Female Inlets

Product Compliance:
 ASME A112.18.1 / CSA B125.1
 NSF 61 - Section 9
 NSF 372 (Low Lead Content)
 2019 DOE PRSV - Class II



T&S BRASS AND BRONZE WORKS, INC.

2 Saddleback Cove / P.O. Box 1088
Travelers Rest, SC 29690

Model No.

S-0133-12-CR-BYS-TGH

Item No.

Travelers Rest, SC: 800-476-4103 • Simi Valley, CA: 800-423-0150 • Fax: 864-834-3518 • www.tsbrass.com

ITEM NO.	SALES NO.	DESCRIPTION
2	010476-45	#27 Washer
3	S000907-30	SS Spray Valve Hold Down Ring
4	S020795-30	Stainless Steel Grip Handle (Blue)
5	001014-45	Washer, Hose Barrel
6	S018200-30	Stainless Steel Pre-Rinse Swivel w/ 2 Washers
7	S-0044-H2A	44" Flexible Stainless Steel Hose, Less Handle
8	S000888-30	SS EasyInstall Overhead Spring
9	S000821-30	Stainless Steel Spring Body
10	S-TEE-RGD	Stainless Steel Rigid Tee
11	S-0109-01	Stainless Steel 6" Wall Bracket
12	S004R	Stainless Steel Finger Hook
13	S000369-30	Stainless Steel 3/8" NPT x 18" Riser
14	S-0155-CR-LNEZ	Stainless Steel EasyInstall Add-On Faucet w/ Quarter-Turn Cerama Cartridge & Lever Handle, Less Nozzle
15	SEZ-K	Stainless Steel EasyInstall Kit: Nut, Bushing, O-Ring & Lock Washer
16	001065-45	O-Ring
17	014200-45	Star Washer, Anti-Rotation
18	018506-19NS	Blue Button Index, Press-in
19	000925-45	Lab Handle Screw
20	S012447-30NS	Stainless Steel Quarter-Turn Cerama Cartridge w/ Check Valve, Handle, Blue Index & Screw, LTC
21	S012395-30NS	Stainless Steel Quarter-Turn Cerama Cartridge w/ Check Valve, LTC
22	S00AA	SS 1/2" NPT Female Eccentric Flange
23	010569-45	Washer, Inlet Flange Coupling (UK)
24	S012446-30NS	Stainless Steel Quarter-Turn Cerama Cartridge w/ Check Valve, Handle, Red Index & Screw, RTC
25	S012394-30NS	Stainless Steel Quarter-Turn Cerama Cartridge w/ Check Valve, RTC
26	S001638-30NS	Stainless Steel Lever Handle (New Style)
27	001193-19NS	Red Button Index, Press-in
28	S-PT	SS Full Flow Stream Regulator, 55/64-27
29	S062X	Stainless Steel 12" Swing Nozzle w/ Stream Regulator Outlet
30	S-GH	SS Garden Hose Adapter
31	021204-45	Garden Hose Cap
32	S021236-30	SS Rigid Tee w/ Garden Hose Adapter & Cap

Product Specifications:

Pre-Rinse Unit: EasyInstall 8" Stainless Steel Wall Mount Mixing Faucet, SS Quarter-Turn Cerama Cartridges w/ Check Valves, SS Lever Handles, SS Add-On Faucet, SS 12" Swing Nozzle, 44" Flexible Stainless Steel Hose, SS Swivel, SS 1.15 GPM Spray Valve, SS Accessory Fitting w/ Garden Hose Adapter & Cap, SS 6" Wall Bracket & SS 1/2" NPT Female Inlets

Product Compliance:

ASME A112.18.1 / CSA B125.1
NSF 61 - Section 9
NSF 372 (Low Lead Content)
2019 DOE PRSV - Class II