



T&S BRASS AND BRONZE WORKS, INC.
 2 Saddleback Cove / P.O. Box 1088
 Travelers Rest, SC 29690

Model No.
B-3950-01

Item No.

Travelers Rest, SC: 800-476-4103 • Simi Valley, CA: 800-423-0150 • Fax: 864-834-3518 • www.tsbrass.com

This Space for Architect/Engineer Approval

Job Name _____ Date _____

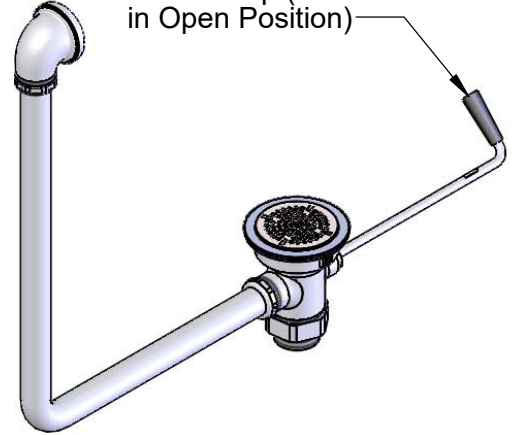
Model Specified _____ Quantity _____

Customer/Wholesaler _____

Contractor _____

Architect/Engineer _____

Twist Handle w/
 Heat Resistant
 Plastic Grip (Shown
 in Open Position)



Removable
 Snap-in Strainer



Ø2 11/16"
 [68mm]

Ø4 7/16"
 [113mm]

Ø1 1/4" [32mm] O.D.
 Overflow Tube

19 1/2"
 [495mm]

12 1/4" ± 1/4"
 [312mm]

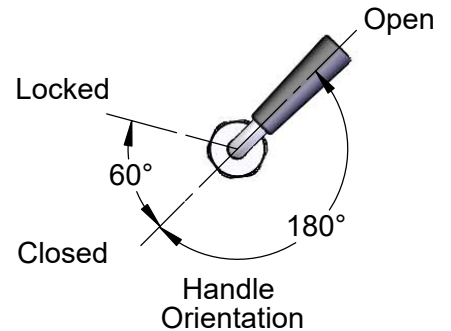
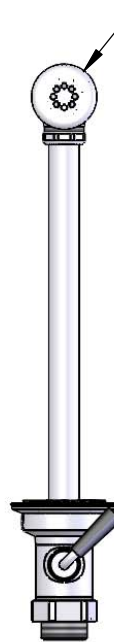
5 11/16"
 [144mm]

2 9/16"
 [67mm]

15 3/8"
 [391mm]

Adapter Converts 2" NPT Male
 to 1 1/2" NPT Male. Remove
 Adapter when 2" NPT Male
 Thread is Needed.

Ø2" [51mm]
 Opening Required



Product Specifications:
 Rotary Waste Drain Valve w/ Twist Handle, 3 1/2" Sink Opening, 2" NPT Male
 Outlet, 1 1/2" NPT Male Adapter & Overflow Tube & Head

Product Compliance:
 ASME A112.18.2 / CSA B125.2



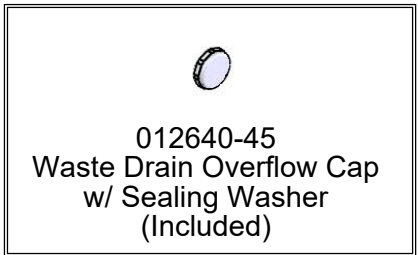
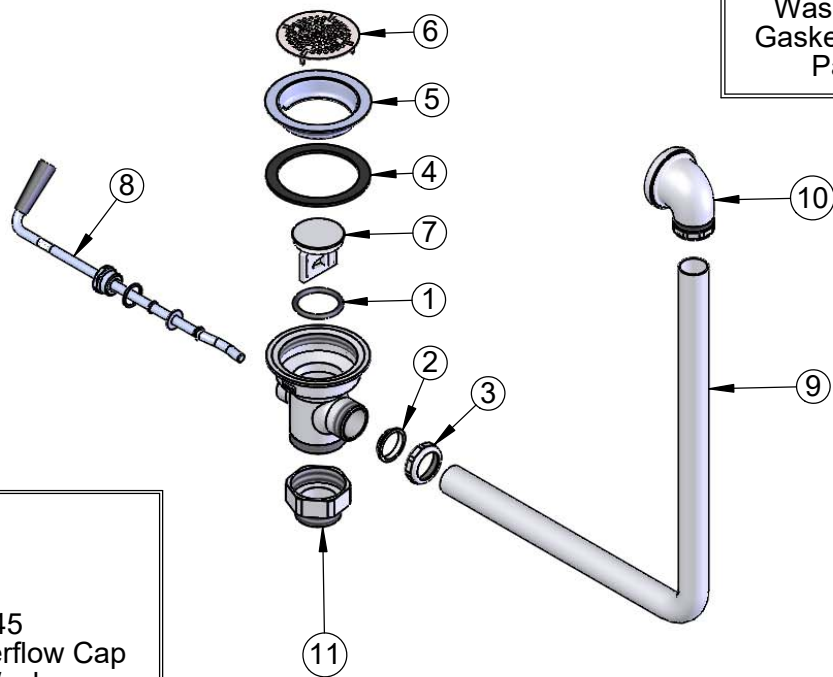
T&S BRASS AND BRONZE WORKS, INC.
 2 Saddleback Cove / P.O. Box 1088
 Travelers Rest, SC 29690

Model No.
B-3950-01

Item No.

Travelers Rest, SC: 800-476-4103 • Simi Valley, CA: 800-423-0150 • Fax: 864-834-3518 • www.tsbrass.com

ITEM NO.	SALES NO.	DESCRIPTION
1	010389-45	O-Ring, Plunger
2	010390-45	Ferrule, Coupling Nut
3	010391-45	Nut, Coupling for Twist Drain
4	010382-45	Gasket, 3 1/2" Face Flange
5	010384-45	Flange, 3 1/2" Face
6	010386-45	Strainer, 3 1/2" Snap-in Removable
7	010388-45	Plunger, Lever and Twist Drain
8	010393-45	Handle, Rotary Waste Valve Twist
9	011355-45	Tube, Overflow Elbow
10	011356-45	Head, Overflow Tube
11	B-3945	Adapter, 2" NPT x 1 1/2" NPT



Product Specifications:
 Rotary Waste Drain Valve w/ Twist Handle, 3 1/2" Sink Opening, 2" NPT Male Outlet, 1 1/2" NPT Male Adapter & Overflow Tube & Head

Product Compliance:
 ASME A112.18.2 / CSA B125.2