



# T&S BRASS AND BRONZE WORKS, INC.

2 Saddleback Cove / P.O. Box 1088  
Travelers Rest, SC 29690

Model No.

**ESA-QD**

Item No.

Travelers Rest, SC: 800-476-4103 • Simi Valley, CA: 800-423-0150 • Fax: 864-834-3518 • www.tsbrass.com

This Space for Architect/Engineer Approval

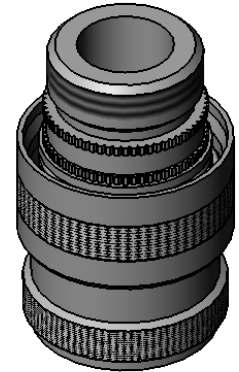
Job Name \_\_\_\_\_ Date \_\_\_\_\_

Model Specified \_\_\_\_\_ Quantity \_\_\_\_\_

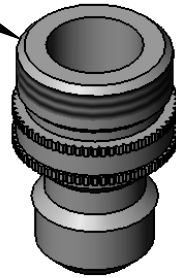
Customer/Wholesaler \_\_\_\_\_

Contractor \_\_\_\_\_

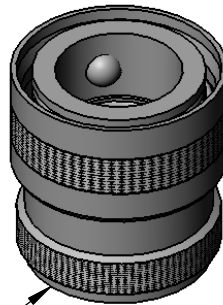
Architect/Engineer \_\_\_\_\_



1/2" Male BSP  
Threads



1/2" Female BSP  
Threads



Chrome Plated Brass

Product Specifications:  
Chrome Plated Brass Quick Disconnect  
w/ 1/2" Male & Female BSP Threads

Drawn

JRM

Checked

DMH

Approved

JHB

Scale:

1:1

Date:

03/28/12