

T&S BRASS AND BRONZE WORKS, INC.
 2 Saddleback Cove / P.O. Box 1088
 Travelers Rest, SC 29690

Model No.

UMPK-6DLN-00

Item No.

Travelers Rest, SC: 800-476-4103 • Simi Valley, CA: 800-423-0150 • Fax: 864-834-3518 • www.tsbrass.com

This Space for Architect/Engineer Approval

Job Name _____ Date _____

Model Specified _____ Quantity _____

Customer/Wholesaler _____

Contractor _____

Architect/Engineer _____



EB-0024-H
 24" Stainless Steel
 Hose w/ Polyurethane
 Inner Hose & Handle

* 8 7/8"
[226mm]

UK-0107
 1.15 GPM
 Blue Spray
 Valve

Finger
 Hook

B-0109-03
 12" Adjustable
 Wall Bracket

Items Not Shown
 For Clarity

EasyInstall Lock Nut
 & Bushing

* 24 3/8"
[618mm]

Quarter-Turn
 Ceramic Cartridges
 w/ Lever Handles
 & Color Coded
 Screws

145X
 3/8" NPT x
 12" Riser

Mounting
 Surface

* 7"
[178mm]

6"
[152mm]

1/2" BSPP
 Male Inlets

Ø 2"
[52mm]

1 9/16"
[39mm]
 Maximum
 Thickness

Rough-In Requirement:
 (2) Ø 1" [25mm] Mounting Holes

* Dimensions Will Vary ±1" Each Installation

Product Specifications:

Pre-Rinse Unit: 6" Deck Mount Mixing Faucet, Quarter-Turn Ceramic Cartridges, Euro Lever Handles, Compact Spring & Flexible Stainless Steel Hose, 1.15 GPM Spray Valve (Blue), Integral Check Valves, 12" Wall Bracket & 1/2" BSPP Male Inlets

Product Compliance:

WRAS Approved Product (UK)



T&S BRASS AND BRONZE WORKS, INC.

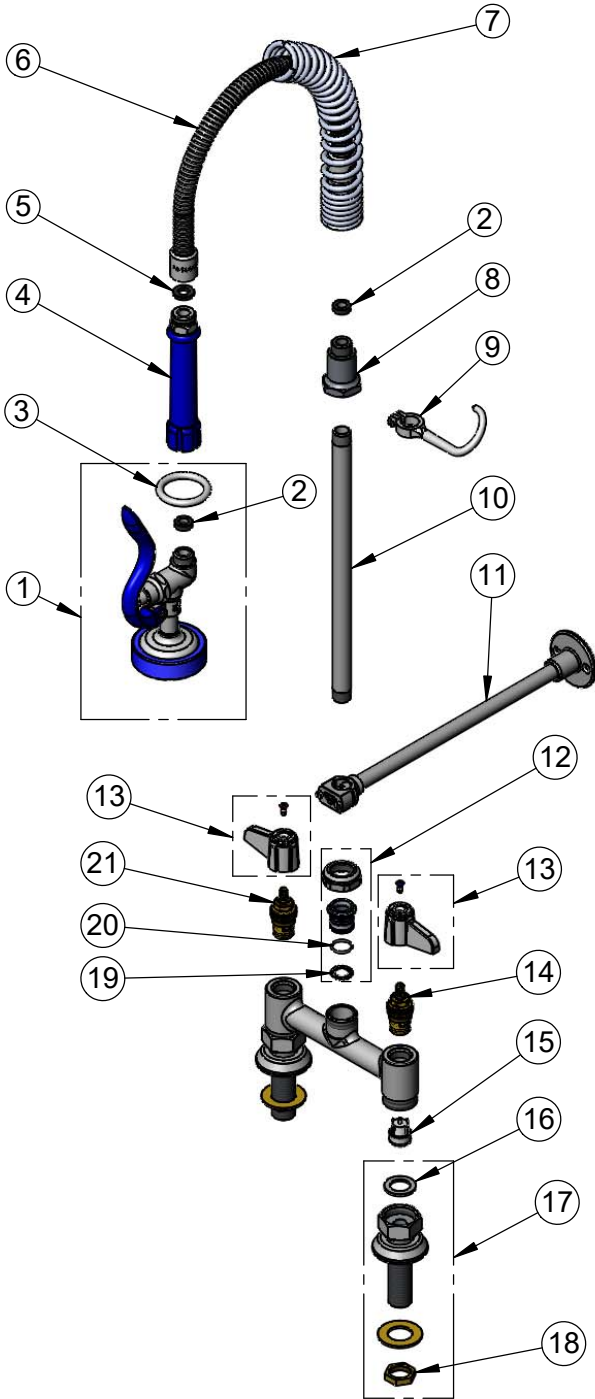
2 Saddleback Cove / P.O. Box 1088
Travelers Rest, SC 29690

Model No.

UMPK-6DLN-00

Item No.

Travelers Rest, SC: 800-476-4103 • Simi Valley, CA: 800-423-0150 • Fax: 864-834-3518 • www.tsbrass.com



ITEM NO.	SALES NO.	DESCRIPTION
1	UK-0107	1.15 GPM Spray Valve (Blue)
2	010476-45	#27 Washer
3	000907-45	Spray Valve Hold Down Ring
4	011482-40	Blue Grip Handle
5	001014-45	Washer, B-0100 Hose Barrel
6	B-0024-H2A	24" Flex Hose Less Handle
7	016795-45	Compact Spring
8	000821-40	Spring Body
9	004R	Finger Hook
10	145X	Nipple, 3/8" NPT x 12"
11	B-0109-03	12" Wall Bracket
12	EU-EZ-K	Euro EasyInstall Retro-Fit Kit
13	E-HDL-L	EU Lever Handle & Blue/Red Screws
14	013788-45	equip, Quarter-Turn Ceramic Cartridge, LTC
15	013840-45	20mm Check Valve
16	010569-45	Washer, Inlet Flange Coupling (UK)
17	011473-40	UK Inlet Flange
18	002954-45	Shank Lock Nut
19	014200-45	Star Washer, Anti-Rotation
20	001062-45	O-Ring
21	013787-45	equip, Quarter-Turn Ceramic Cartridge, RTC

Product Specifications:

Pre-Rinse Unit: 6" Deck Mount Mixing Faucet, Quarter-Turn Ceramic Cartridges, Euro Lever Handles, Compact Spring & Flexible Stainless Steel Hose, 1.15 GPM Spray Valve (Blue), Integral Check Valves, 12" Wall Bracket & 1/2" BSP Male Inlets

Product Compliance:

WRAS Approved Product (UK)