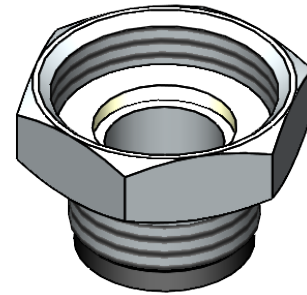
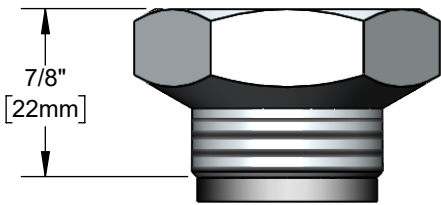




**Architect/Engineering Specifications:**

Adapter set for connecting T&S wall mount faucet to existing Krowne Silver Series inlet flanges, 1 3/8" hex with internal threads to fit T&S wall mount faucet body. Certified to ASME A112.18.1/CSA B125.1, NSF 61-Section 9 and NSF 372.

Job Name _____
Model Specified _____ Quantity _____
Variations Specified _____
Date _____



**Features & Benefits:**

- Wall mount faucet adapter for T&S faucet to Krowne Silver series inlet flanges
- 1 3/8" hex with internal threads to fit T&S wall mount faucet body
- Not applicable to Krowne's Royal series (no inlet adapters required)
- (2) faucet adapters w/ seals
- Material: Polished chrome plated brass

**Product Compliance:**

- ASME A112.18.1 / CSA B125.1
- NSF 61 - Section 9
- NSF 372 (Low Lead Content)



**Warranty:** One Year (Limited)

**Performance Data:**

- N/A

