



**Spray Valves**  
**EB-0108-H**

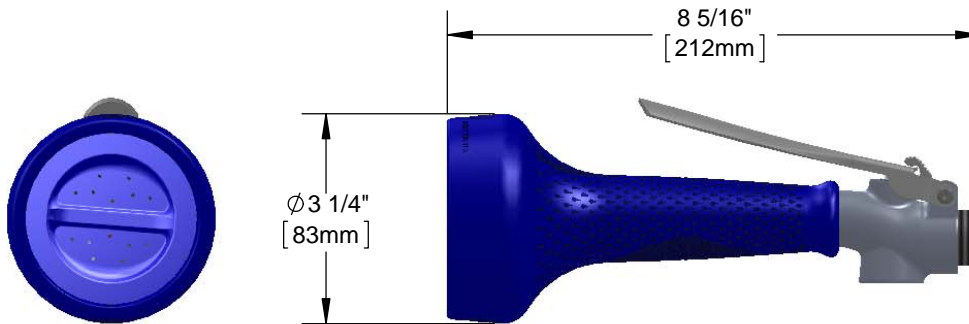
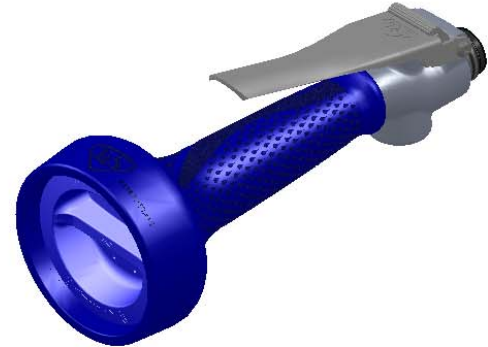
TAG:

*High Flow Spray Valve*

**Architect/Engineering Specifications:**

High flow spray valve with polished chrome plated brass body, stainless steel trigger and 7/8-20 UN male inlet.  
Certified to ASME A112.18.1/CSA B125.1, NSF 61-Section 9 and NSF 372.

Job Name \_\_\_\_\_  
 Model Specified \_\_\_\_\_ Quantity \_\_\_\_\_  
 Variations Specified \_\_\_\_\_  
 Date \_\_\_\_\_



**Features & Benefits:**

- Forged brass body
- High flow JeTSpray valve
- 7/8-20 UN male inlet
- Fast action trigger
- Heat insulated handle with crush resistant grip
- Smart one-handed trigger lock
- Removable screen filter
- Material: Polished chrome plated brass body and insulated grip handle

**Product Compliance:**

- ASME A112.18.1 / CSA B125.1
- NSF 61 - Section 9
- NSF 372 (Low Lead Content)
- EPA Act 2005 Non-Compliant (PRSV)
- Product Not Designed/Intended For Commercial Warewashing in North America

**Warranty:** One Year (Limited)

**Performance Data:**

- Pressure: 20 - 125 psi
- Temperature: 40 °F - 140 °F
- Flow Rate: 3.28 GPM @ 60 psi



**T&S BRASS AND BRONZE WORKS, INC.**



• 2 Saddleback Cove • Travelers Rest, SC 29690  
 Ph 800-476-4103 • Fax 864-834-3518  
 • Simi Valley, CA • Ph 800-423-0150 • www.tsbrass.com

Date: 03/11/16