



T&S BRASS AND BRONZE WORKS, INC.

2 Saddleback Cove / P.O. Box 1088
Travelers Rest, SC 29690

Model No.

EB-0107-J

Item No.

Travelers Rest, SC: 800-476-4103 • Simi Valley, CA: 800-423-0150 • Fax: 864-834-3518 • www.tsbrass.com

This Space for Architect/Engineer Approval

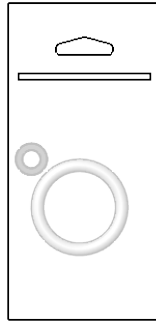
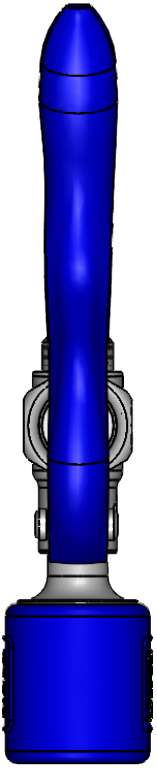
Job Name _____ Date _____

Model Specified _____ Quantity _____

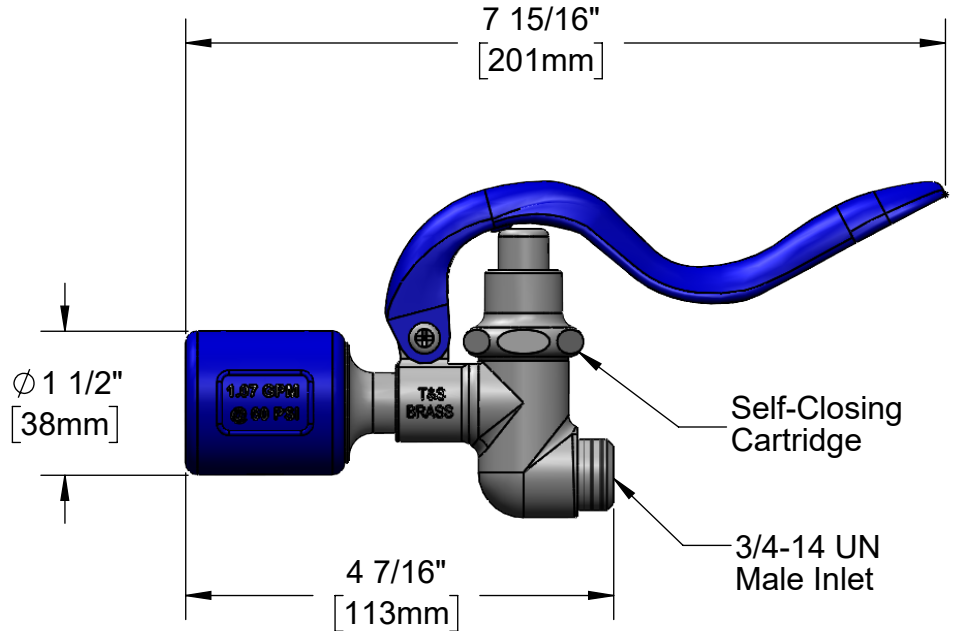
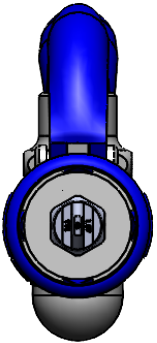
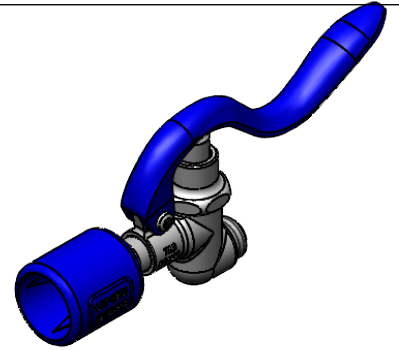
Customer/Wholesaler _____

Contractor _____

Architect/Engineer _____



Hose Washer &
Hold Down Ring
(Included)



Flow Rate: 1.07 GPM (4.1 Lpm) @ 60 psi
Spray Force: 7.2 Ozf (204 Gramf) @ 60 psi

Product Specifications:
Blue Self-Closing Pre-Rinse Spray Valve, 1.07 GPM Spray Nozzle

Product Compliance:
ASME A112.18.1 / CSA B125.1
NSF 61 - Section 9
NSF 372 (Low Lead Content)
2019 DOE PRSV - Class II



T&S BRASS AND BRONZE WORKS, INC.

2 Saddleback Cove / P.O. Box 1088
Travelers Rest, SC 29690

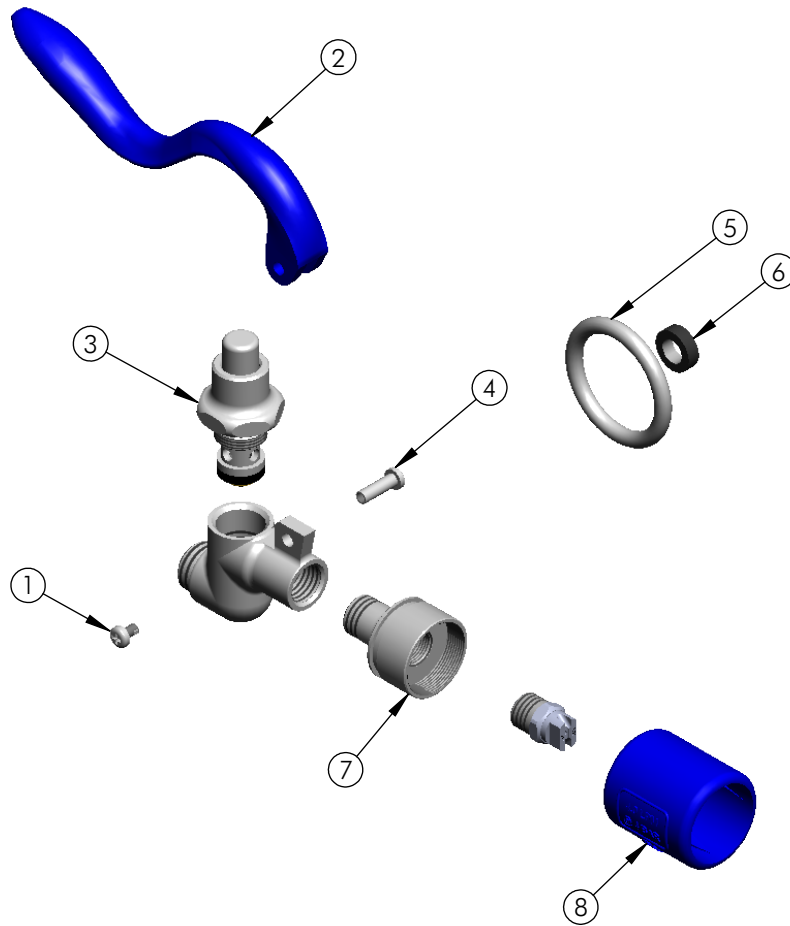
Model No.

EB-0107-J

Item No.

Travelers Rest, SC: 800-476-4103 • Simi Valley, CA: 800-423-0150 • Fax: 864-834-3518 • www.tsbrass.com

ITEM NO.	SALES NO.	DESCRIPTION
1	003199-45	Spray Valve Handle Screw
2	011454-45	Spray Valve Handle - Blue
3	010594-40	B-0107 Bonnet
4	003198-45	Spray Valve Handle Nut
5	000907-45	Spray Valve Hold Down Ring
6	010476-45	#27 Washer
7	003128-25NS	Short Low-Flow PRSV Nozzle
8	018293-45NS	Short Blue Shield Low Flow 1.07 GPM



Product Specifications:
Blue Self-Closing Pre-Rinse Spray Valve, 1.07 GPM Spray Nozzle

Product Compliance:
ASME A112.18.1 / CSA B125.1
NSF 61 - Section 9
NSF 372 (Low Lead Content)
2019 DOE PRSV - Class II