



T&S BRASS AND BRONZE WORKS, INC.
 2 Saddleback Cove / P.O. Box 1088
 Travelers Rest, SC 29690

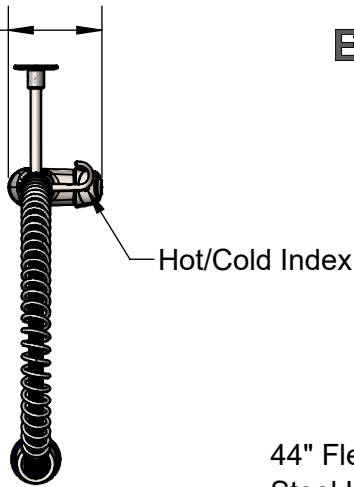
Model No.
S-2780-BY

Item No.

Travelers Rest, SC: 800-476-4103 • Simi Valley, CA: 800-423-0150 • Fax: 864-834-3518 • www.tsbrass.com

4 7/8"
 [124mm]

EVERSTEEL



Hot/Cold Index

This Space for Architect/Engineer Approval

Job Name _____ Date _____

Model Specified _____ Quantity _____

Customer/Wholesaler _____

Contractor _____

Architect/Engineer _____

44" Flexible Stainless Steel Hose w/ Spring & Spray Valve

Items Not Shown For Clarity

Stainless Steel Finger Hook

S-0107-Y Stainless Steel 1.15 GPM Spray Valve

Stainless Steel 3/8" NPT x 24" Riser

EasyInstall Lock Nut & Bushing

Single Lever w/ Ceramic Cartridge

2 3/16"
 [55mm]
 Maximum Thickness

18" Flexible Stainless Steel Supply Hoses w/ G1/2 Female Swivel Fittings (Compatible w/ 1/2" NPSM Threads)

12 15/16"
 [329mm]

14 1/16"
 [357mm]

Mounting Surface

S-0109-01 Stainless Steel 6" Wall Bracket

42 1/2"
 [1080mm]

Ø2"
 [51mm]
 Deck Flange

Rough-in Requirement:
 Ø 1 1/2" [38mm] Mounting Hole

Product Specifications:

Pre-Rinse Unit: EasyInstall Stainless Steel Single Hole Deck Mount Single Lever Faucet, Ceramic Cartridge, 44" Flexible Stainless Steel Hose, Stainless Steel 1.15 GPM New Style Spray Valve, Stainless Steel 6" Wall Bracket & Flexible Stainless Steel Supply Hoses

Product Compliance:

ASME A112.18.1 / CSA B125.1
 NSF 61 - Section 9
 NSF 372 (Low Lead Content)
 2019 DOE PRSV - Class II



T&S BRASS AND BRONZE WORKS, INC.

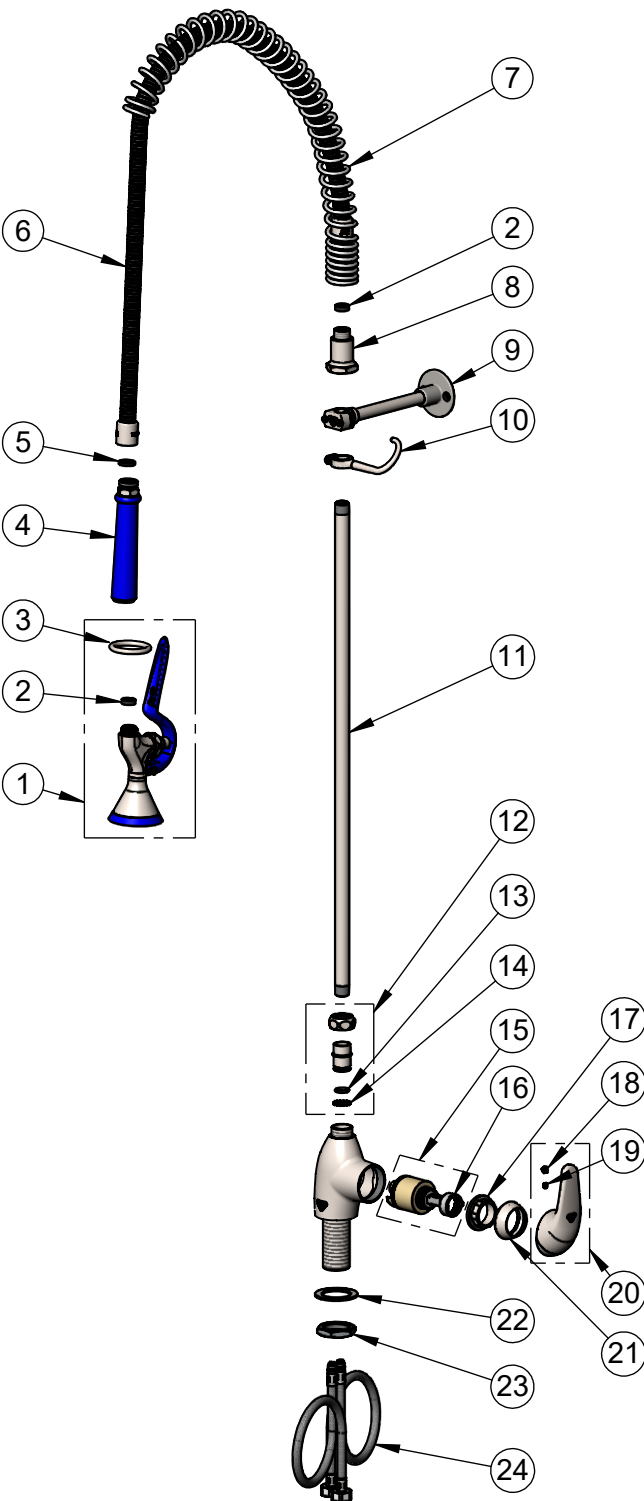
2 Saddleback Cove / P.O. Box 1088
Travelers Rest, SC 29690

Model No.

S-2780-BY

Item No.

Travelers Rest, SC: 800-476-4103 • Simi Valley, CA: 800-423-0150 • Fax: 864-834-3518 • www.tsbrass.com



| ITEM NO. | SALES NO. | DESCRIPTION |
|----------|-------------|---|
| 1 | S-0107-Y | Stainless Steel 1.15 GPM New Style Spray Valve (Blue) |
| 2 | 010476-45 | #27 Washer |
| 3 | S000907-30 | Spray Valve Hold Down Ring |
| 4 | S020795-30 | Stainless Steel New Style Grip Handle (Blue) |
| 5 | 001014-45 | Washer, Hose Barrel |
| 6 | S-0044-H2A | Flexible Stainless Steel Hose |
| 7 | S000888-30 | EasyInstall Overhead Spring |
| 8 | S000821-30 | Spring Body |
| 9 | S-0109-01 | B-109 Wall Bracket Body |
| 10 | S004R | Finger Hook |
| 11 | S000372-30 | 3/8" NPT x 24" Riser, Stainless Steel |
| 12 | SEZ-K | Stainless Steel EasyInstall Kit: Nut, Bushing, O-Ring & Lock Washer |
| 13 | 001065-45 | O-Ring |
| 14 | 014200-45 | Star Washer, Anti-Rotation |
| 15 | 013111-45 | Ceramic Cartridge w/ Temperature Limit Stop |
| 16 | 015400-45 | Temperature Limit Stop |
| 17 | S021022-20 | Locking Nut, Stainless Steel |
| 18 | 014173-45 | Index, Temperature |
| 19 | 016675-45 | Set Screw |
| 20 | S021020-30 | Single Lever Handle, Stainless Steel |
| 21 | S021021-30 | Trim Ring, Stainless Steel |
| 22 | S020656-20 | Washer, Stainless Steel |
| 23 | S020655-20 | Lock Nut |
| 24 | 012436-45DR | Flexible Connector Hose |

Product Specifications:

Pre-Rinse Unit: EasyInstall Stainless Steel Single Hole Deck Mount Single Lever Faucet, Ceramic Cartridge, 44" Flexible Stainless Steel Hose, Stainless Steel 1.15 GPM New Style Spray Valve, Stainless Steel 6" Wall Bracket & Flexible Stainless Steel Supply Hoses

Product Compliance:

ASME A112.18.1 / CSA B125.1
NSF 61 - Section 9
NSF 372 (Low Lead Content)
2019 DOE PRSV - Class II