

Installation and Maintenance Instructions

STAINLESS STEEL SINGLE LEVERS

Limited Lifetime Warranty (Commercial Applications)


T&S warrants to the original purchaser (other than for purposes of resale) that such product is free from defects in material and workmanship for its limited lifetime. During this warranty period, if the product is found to be defective, T&S shall, at its options, repair and/or replace it. To obtain warranty service, products must be returned to...

T&S Brass and Bronze Works, Inc.
Attn: Warranty Repair Department
2 Saddleback Cove
Travelers Rest, SC 29690

Shipping, freight, insurance, and other transportation charges of the product to T&S and the return of repaired or replaced product to the purchaser are the responsibility of the purchaser. Repair and/or replacement shall be made within a reasonable time after receipt by T&S of the returned product. This warranty does not cover items which have received secondary finishing or have been altered or modified after purchase, or for defects caused by physical abuse to or misuse of the product, or shipment of the products.

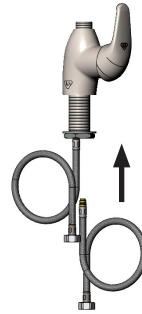
Any express warranty not provided herein, and any remedy for Breach of Contract which might arise, is hereby excluded and disclaimed. Any implied warranties of merchantability or fitness for a particular purpose are limited in duration to the warranty period provided on the product. Under no circumstances shall T&S be liable for loss of use or any special consequential costs, expenses or damages.

Some states do not allow limitations on how long an implied warranty lasts or the exclusion or limitation of incidental or consequential damages, so the above limitations or exclusions may not apply to you. Specific rights under this warranty and other rights vary from state to state.

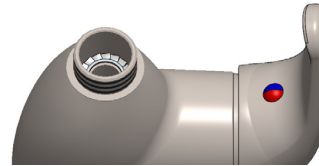
Attention California Residents:
 **WARNING** This product can expose you to chemicals including Lead, Chromium (hexavalent compounds) and Phthalates (DEHP) which are known to the State of California to cause cancer and birth defects or other reproductive harm.

For more information go to
www.P65Warnings.ca.gov.

P/N: 098-021107-45ES Rev.0
 DATE: 08-08-23
 DRAWN: TED
 CHECKED: JMD 06-06-24
 APPROVED: JHB 06-06-24



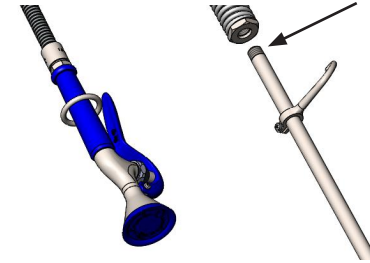
Step 1:
 Insert flex line inlets and tighten by hand. Apply plumber's putty to underside of body and insert into mounting hole. With wrench, tighten the locking nut.



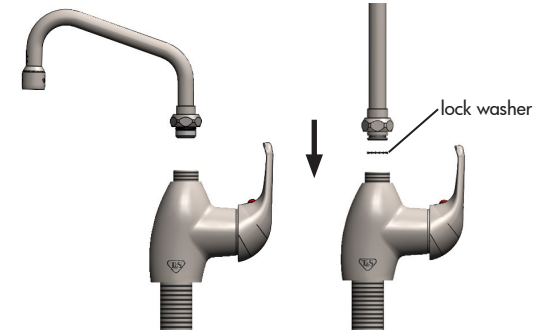
Step 3:
For Pre-Rinse Units: make sure the EasyInstall® locking washer is seated properly inside the faucet body.
For Faucets: remove the EasyInstall® locking washer.



Step 5:
 Lock the EasyInstall® locking nut in place. Tighten with wrench.



Step 2:
For Pre-Rinse Units: apply plumber's tape to top of riser threads and attach to spring assembly. Tighten with wrench.



Step 4:
For Pre-Rinse Units: place riser assembly into faucet body.
For Faucets: place the swing nozzle into faucet body. Press down until the end-fitting "pops" in.

Stainless Steel Base Faucet Assemblies

1	Faucet Body	N/A
2	Cerama Cartridge with Temperature Limit Stop	013111-45
3	Temperature Limit Stop	015400-45
4	Locking Nut	S021022-20
5	Trim Ring	S021021-30
6	Single Lever Handle	S021020-30
7	Set Screw	016675-45
8	Index, Temperature	014173-45
9	Washer	S020656-20
10	Locknut	S020655-20
11	Flexible Connector Hoses (2)	012436-45DR

Riser Assembly

12	Lock Washer, EasyInstall	014200-45
13	Nipple, 3/8" x 24"	S000372-30
14	Swivel Assembly, EasyInstall	SEZ-K
15	Swivel Piece	N/A
16	O-Ring, Swivel Piece	001065-45
17	Asm, Finger Hook & Screw	S004R
18	Wall Bracket, 6" (add -B to model # for wall bracket)	S-0109-01

Pre-Rinse Unit Assembly

19	Spring Body	S000821-30
20	Washer, Hold Down Assembly	010476-45
21	Spring, Overhead	S000888-30
22	Asm, Flexible Stainless Steel Hose	S-0044-H
23	Asm, 1.15 GPM Spray Valve	S-0107
	Asm, 0.65 GPM Spray Valve	S-0107-C
	Asm, 1.07 GPM Spray Valve	S-0107-J
	Asm, 1.15 GPM Spray Valve	S-0107-Y

Stainless Steel Nozzle Assembly

24	Asm, Swing Nozzle w/ Stream Regulator Outlet	
	SS Swing Nozzle - 6"	S059X
	SS Swing Nozzle - 8"	S060X
	SS Swing Nozzle - 12"	S062X
	Full Flow Stream Regulator Outlet	
	SS Swivel Gooseneck - 5-3/4"	S0133X
25	Full Flow Stream Regulator Outlet	S-PT
26	Nozzle (see models)	N/A
27	Nut, Swivel	N/A
28	Washer, Swivel	009538-45
29	Swivel Piece	N/A
30	O-Ring	001074-45
31	Sleeve, Swivel (2)	011429-45

