



T&S BRASS AND BRONZE WORKS, INC.

2 Saddleback Cove / P.O. Box 1088
Travelers Rest, SC 29690

Model No.

B-0179-A12CR-68H

Item No.

Travelers Rest, SC: 800-476-4103 • Simi Valley, CA: 800-423-0150 • Fax: 864-834-3518 • www.tsbrass.com

This Space for Architect/Engineer Approval

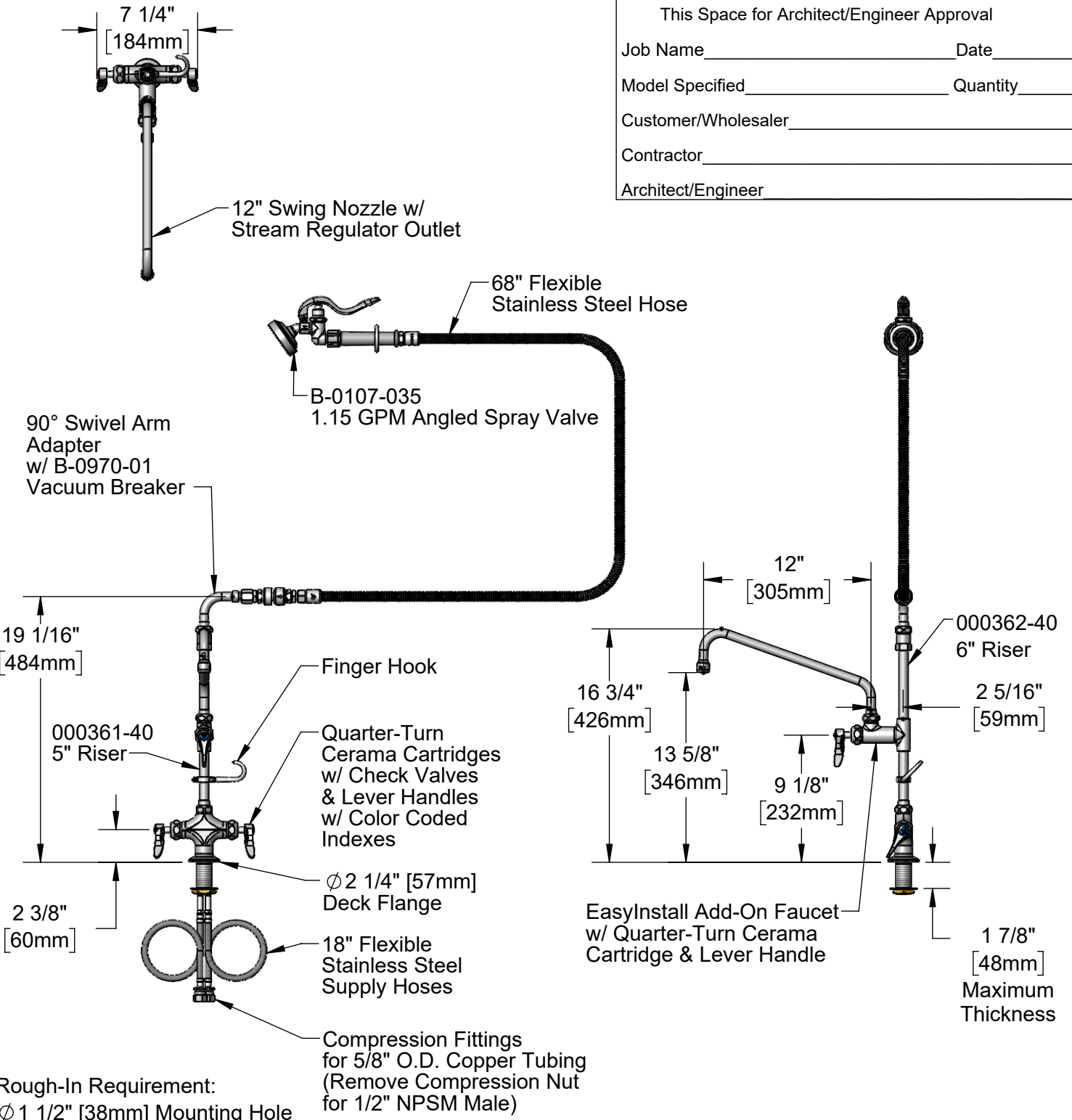
Job Name _____ Date _____

Model Specified _____ Quantity _____

Customer/Wholesaler _____

Contractor _____

Architect/Engineer _____



Product Specifications:

Single Hole Deck Mount Mixing Faucet, Quarter-Turn Cerama Cartridges w/ Check Valves, Lever Handles, 68" Flexible Stainless Steel Hose, 1.15 GPM Angled Spray Valve, Elevated Add-On Faucet w/ 12" Swing Nozzle, 90° Swivel Adapter Arm, Vacuum Breaker & 18" Flexible Stainless Steel Supply Hoses w/ 1/2" NPSM Male Inlets

Product Compliance:

ASME A112.18.1 / CSA B125.1
NSF 61 - Section 9
NSF 372 (Low Lead Content)
2019 DOE PRSV - Class II
CSA B64.8 (VB)



T&S BRASS AND BRONZE WORKS, INC.

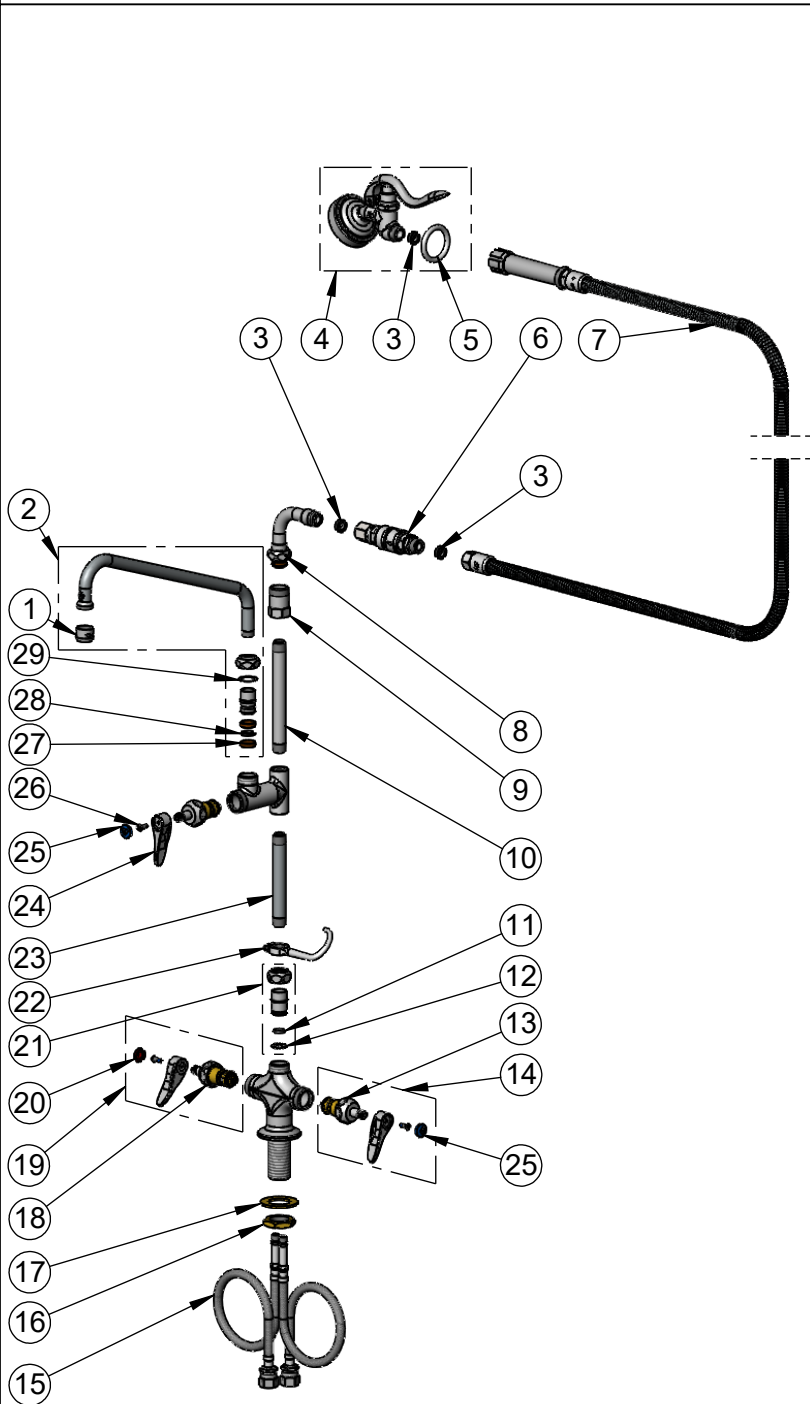
2 Saddleback Cove / P.O. Box 1088
Travelers Rest, SC 29690

Model No.

B-0179-A12CR-68H

Item No.

Travelers Rest, SC: 800-476-4103 • Simi Valley, CA: 800-423-0150 • Fax: 864-834-3518 • www.tsbrass.com



ITEM NO.	SALES NO.	DESCRIPTION
1	B-PT	Full Flow Stream Regulator, 55/64-27
2	062X	12" Swing Nozzle
3	010476-45	#27 Washer
4	B-0107-035	1.15 GPM Angled Spray Valve
5	000907-45	Spray Valve Hold Down Ring
6	B-0970-01	Vacuum Breaker, 3/4-14 UN
7	B-0068-H	104" Flexible Stainless Steel Hose
8	034A	90° Swivel Arm Adapter
9	054X	Swivel Body
10	000362-40	Nipple, 3/8" x 6"
11	001065-45	O-Ring
12	014200-45	Star Washer, Anti-Rotation
13	012395-25NS	Quarter-Turn Cerama Cartridge w/ Check Valve, LTC
14	012447-25NS	Quarter-Turn Cerama Cartridge w/ Check Valve, Handle, Blue Index & Screw, LTC
15	012534-45	18" Flexible Supply Hose (2)
16	000965-45	Lock Nut
17	002290-45	Lock Washer
18	012394-25NS	Quarter-Turn Cerama Cartridge w/ Check Valve, RTC
19	012446-25NS	Quarter-Turn Cerama Cartridge w/ Check Valve, Handle, Blue Index & Screw, RTC
20	001193-19NS	Red Button Index, Press-in
21	EZ-K	EasyInstall Kit
22	004R	Finger Hook
23	000361-40	Nipple, 3/8" NPT x 5"
24	001638-45NS	Lever Handle (New Style)
25	018506-19NS	Blue Button Index, Press-in
26	000925-45	Lab Handle Screw
27	011429-45	Swivel Sleeves (2)
28	001074-45	O-Ring
29	009538-45	Swivel Washer

Product Specifications:

Single Hole Deck Mount Mixing Faucet, Quarter-Turn Cerama Cartridges w/ Check Valves, Lever Handles, 68" Flexible Stainless Steel Hose, 1.15 GPM Angled Spray Valve, Elevated Add-On Faucet w/ 12" Swing Nozzle, 90° Swivel Adapter Arm, Vacuum Breaker & 18" Flexible Stainless Steel Supply Hoses w/ 1/2" NPSM Male Inlets

Product Compliance:

ASME A112.18.1 / CSA B125.1
NSF 61 - Section 9
NSF 372 (Low Lead Content)
2019 DOE PRSV - Class II
CSA B64.8 (VB)