



**T&S BRASS AND BRONZE WORKS, INC.**  
 2 Saddleback Cove / P.O. Box 1088  
 Travelers Rest, SC 29690

Model No.  
**U18-KIT**

Item No.

Travelers Rest, SC: 800-476-4103 • Simi Valley, CA: 800-423-0150 • Fax: 864-834-3518 • www.tsbrass.com



**ADA Compliant**

This Space for Architect/Engineer Approval

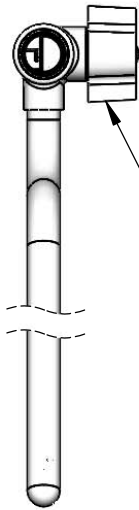
Job Name \_\_\_\_\_ Date \_\_\_\_\_

Model Specified \_\_\_\_\_ Quantity \_\_\_\_\_

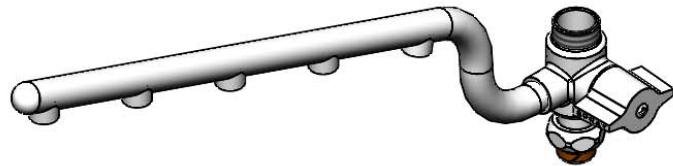
Customer/Wholesaler \_\_\_\_\_

Contractor \_\_\_\_\_

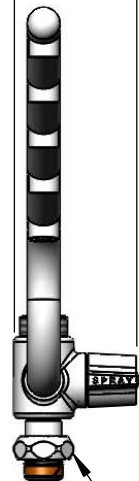
Architect/Engineer \_\_\_\_\_



180° Cartridge switches  
 between Spray Arm  
 and Swing Nozzle



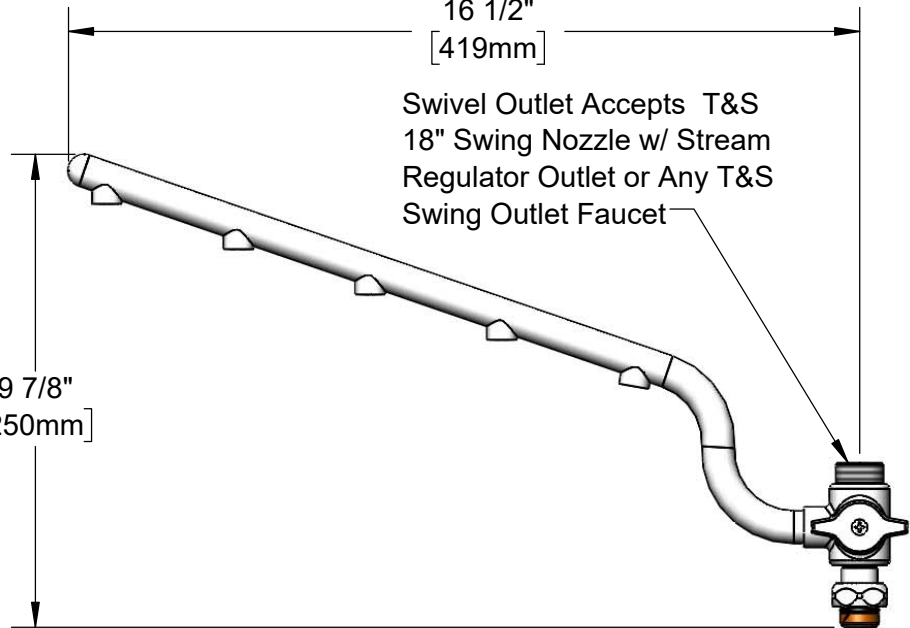
2 9/16"  
 [65mm]



Swivel Nut Fits  
 All Standard T&S  
 Swivel Outlets

16 1/2"  
 [419mm]

9 7/8"  
 [250mm]



Swivel Outlet Accepts T&S  
 18" Swing Nozzle w/ Stream  
 Regulator Outlet or Any T&S  
 Swing Outlet Faucet

Product Specifications:  
 16" ULTRARINSE 1.5 GPM Multiple Tip Spray Arm

Product Compliance:  
 ASME A112.181/CSA B125.1  
 NSF 61 - Section 9  
 NSF 372 (Low Lead Content)  
 ANSI A117.1 (ADA)



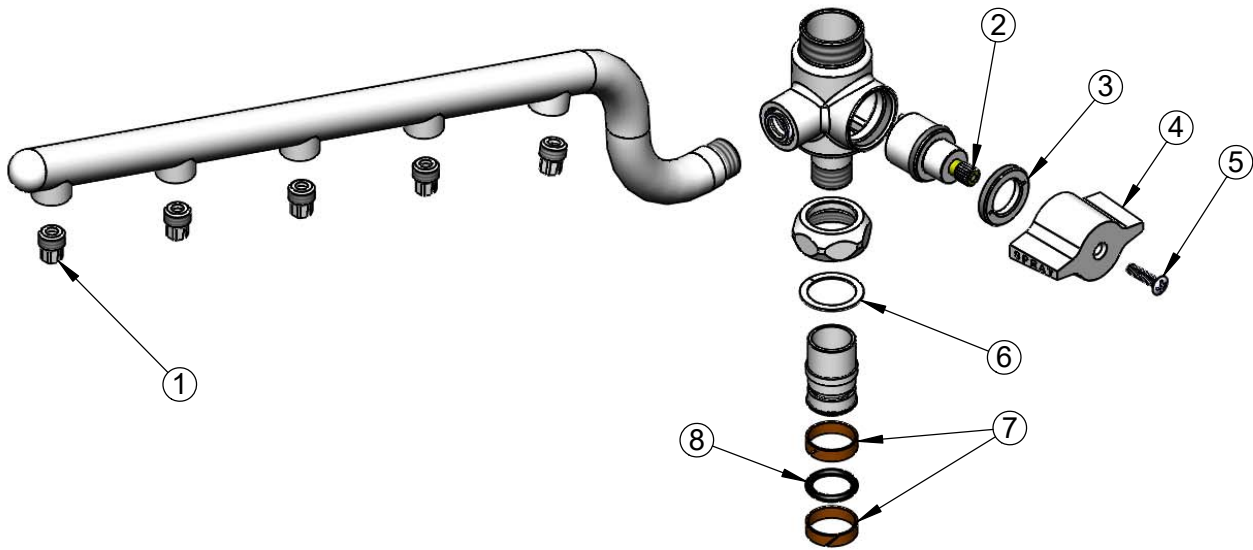
**T&S BRASS AND BRONZE WORKS, INC.**  
 2 Saddleback Cove / P.O. Box 1088  
 Travelers Rest, SC 29690

Model No.  
**U18-KIT**

Item No.

Travelers Rest, SC: 800-476-4103 • Simi Valley, CA: 800-423-0150 • Fax: 864-834-3518 • www.tsbrass.com

ITEM NO.	SALES NO.	DESCRIPTION
1	020666-25	0.3 GPM Spray Tip
2	020641-45	ULTRARINSE Diverter Cartridge
3	020645-45	Diverter Cartridge Nut
4	020642-45	ULTRARINSE Diverter Handle
5	020669-45	M4 Screw, 17mm Long
6	009538-45	Swivel Washer
7	011429-45	Swivel Sleeves (2)
8	001074-45	O-Ring



Product Specifications:  
 16" ULTRARINSE 1.5 GPM Multiple Tip Spray Arm

Product Compliance:  
 ASME A112.181/CSA B125.1  
 NSF 61 - Section 9  
 NSF 372 (Low Lead Content)  
 ANSI A117.1 (ADA)