



**T&S BRASS AND BRONZE WORKS, INC.**  
 2 Saddleback Cove / P.O. Box 1088  
 Travelers Rest, SC 29690

Model No.

**S-2785-S059X**

Item No.

Travelers Rest, SC: 800-476-4103 • Simi Valley, CA: 800-423-0150 • Fax: 864-834-3518 • www.tsbrass.com

This Space for Architect/Engineer Approval

Job Name \_\_\_\_\_ Date \_\_\_\_\_

Model Specified \_\_\_\_\_ Quantity \_\_\_\_\_

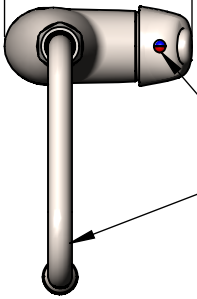
Customer/Wholesaler \_\_\_\_\_

Contractor \_\_\_\_\_

Architect/Engineer \_\_\_\_\_

**EVERSTEEL**

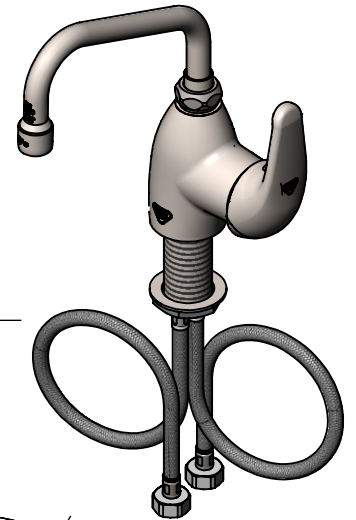
4 7/8"  
[124mm]



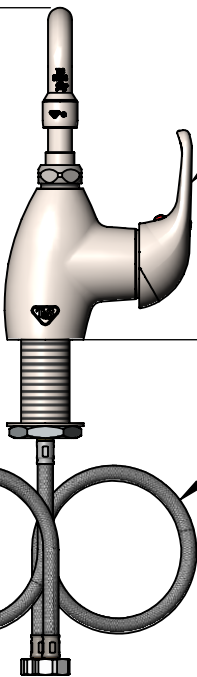
Hot/Cold Index

S059X

Stainless Steel 6" Swing Nozzle  
w/ Stream Regulator Outlet.  
Converts to Rigid w/ 014200-45  
Lock Washer (Included).



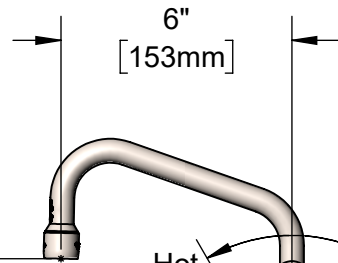
8 5/8"  
[220mm]



Single Lever w/  
Ceramic Cartridge

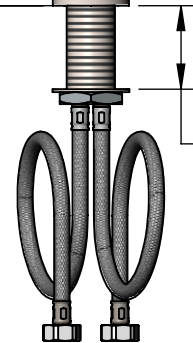
Mounting Surface

5 1/2"  
[140mm]



Hot Cold

18" Flexible Stainless  
Steel Supply Hoses w/  
G1/2 Female Swivel  
Fittings (Compatible w/  
1/2" NPSM Threads)



2 3/16"  
[55mm]  
Maximum  
Thickness

Rough-in Requirement:

Ø 1 1/2" [38mm] Mounting Hole

Product Specifications:

Single Hole Deck Mount Single Lever Faucet, Ceramic Cartridge, Temperature Limit Stop, Stainless Steel 6" Swing Nozzle, & Flexible Stainless Steel Supply Hoses

Product Compliance:

ASME A112.18.1 / CSA B125.1  
NSF 61 - Section 9  
NSF 372 (Low Lead Content)  
ANSI A117.1 (ADA)

Drawn: JMD

Checked: JRM

Approved: JHB

Date: 06/04/24

Scale: 1:5

Sheet: 1 of 2



# T&S BRASS AND BRONZE WORKS, INC.

2 Saddleback Cove / P.O. Box 1088  
Travelers Rest, SC 29690

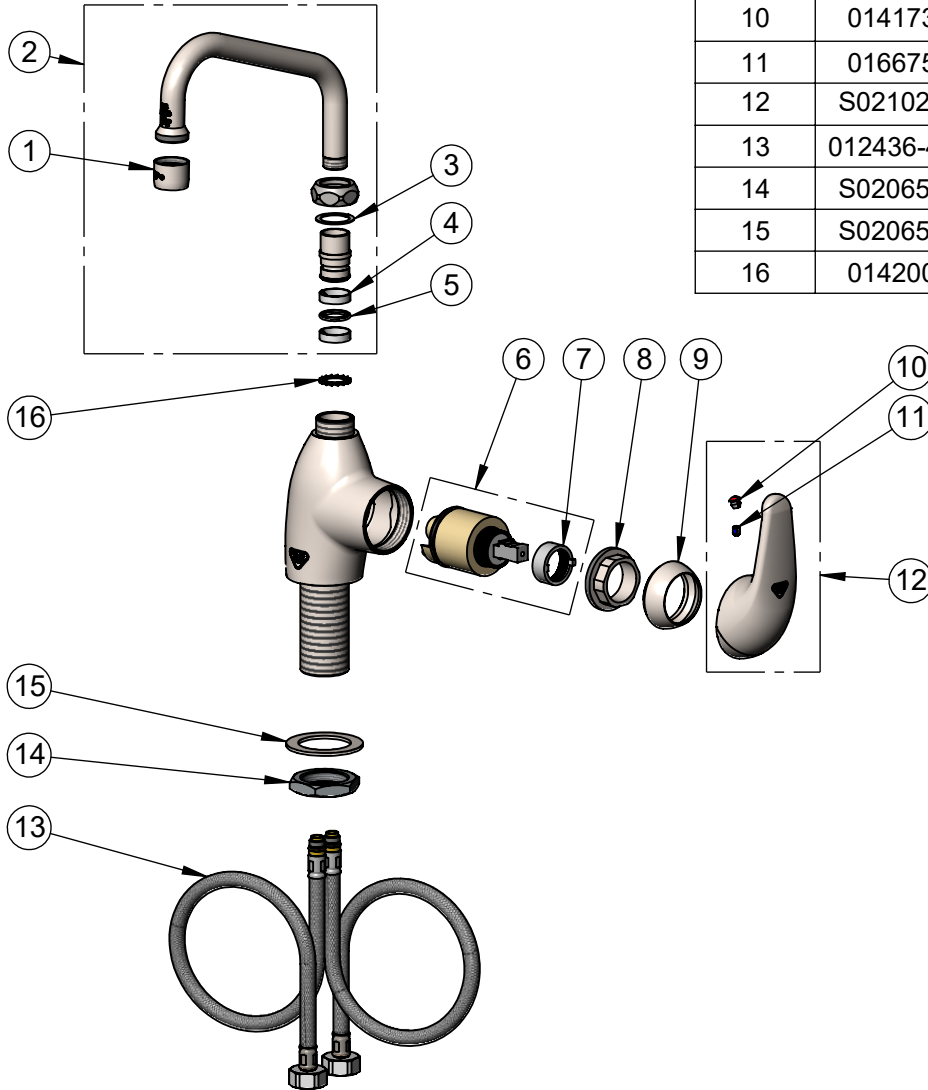
Model No.

**S-2785-S059X**

Item No.

Travelers Rest, SC: 800-476-4103 • Simi Valley, CA: 800-423-0150 • Fax: 864-834-3518 • www.tsbrass.com

ITEM NO.	SALES NO.	DESCRIPTION
1	S-PT	Stainless Steel Full Flow Stream Regulator, 55/64-27
2	S059X	Stainless Steel 6" Swing Nozzle
3	009538-45	Swivel Washer
4	021087-45	Swivel Sleeves (2)
5	001074-45	O-Ring
6	013111-45	Ceramic Cartridge w/ Temperature Limit Stop
7	015400-45	Temperature Limit Stop
8	S021022-20	Locking Nut, Stainless Steel
9	S021021-30	Trim Ring, Stainless Steel
10	014173-45	Index, Temperature
11	016675-45	Set Screw
12	S021020-30	Single Lever Handle, Stainless Steel
13	012436-45DR	Flexible Connector Hose
14	S020655-20	Lock Nut
15	S020656-20	Washer, Stainless Steel
16	014200-45	Star Washer, Anti-Rotation



**Product Specifications:**

Single Hole Deck Mount Single Lever Faucet, Ceramic Cartridge, Temperature Limit Stop, Stainless Steel 6" Swing Nozzle, & Flexible Stainless Steel Supply Hoses

**Product Compliance:**

ASME A112.18.1 / CSA B125.1  
NSF 61 - Section 9  
NSF 372 (Low Lead Content)  
ANSI A117.1 (ADA)