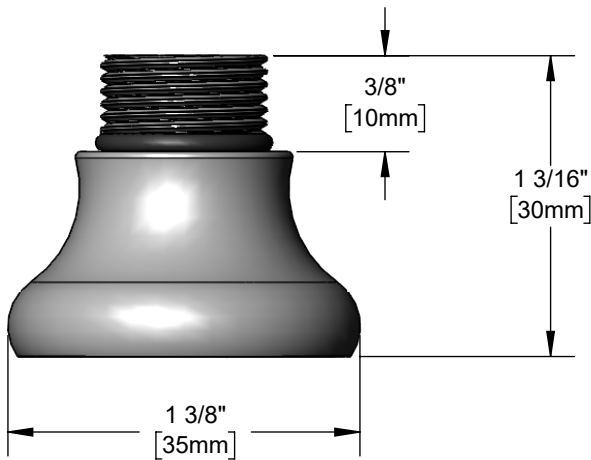
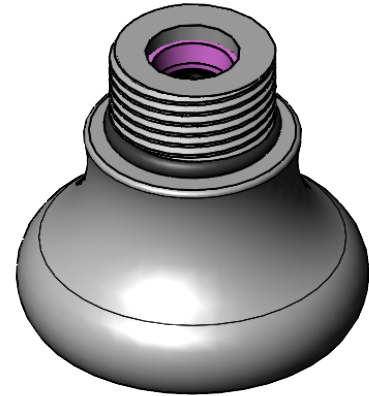




Architect/Engineering Specifications:

Rosespray with multi-laminar (non-aerated) spray pattern, 1.2 GPM flow disc regulator (pink) and 3/8" NPT male thread. Certified to ASME A112.18.1/CSA B125.1, NSF 61-Section 9 and NSF 372.

Job Name	_____		
Model Specified	_____	Quantity	_____
Variations Specified	_____		
Date	_____		



Features & Benefits:

- Rosespray w/ multi-laminar (non-aerated) spray pattern
- 1.2 GPM flow disc regulator (pink)
- 3/8" NPT male thread
- O-ring included
- Fits all series 2 T&S nozzles
- Material: Brass body

Product Compliance:

- ASME A112.18.1 / CSA B125.1
- NSF 61 - Section 9
- NSF 372 (Low Lead Content)



Warranty: One Year (Limited)

Performance Data:

- Pressure: 20 - 125 psi [1.38 - 8.62 bar]
- Temperature: 40°F - 140°F [4.44°C - 60°C]
- Flow Rate: 1.2 GPM [4.54 L/min] @ 60 psi [4.14 bar]

