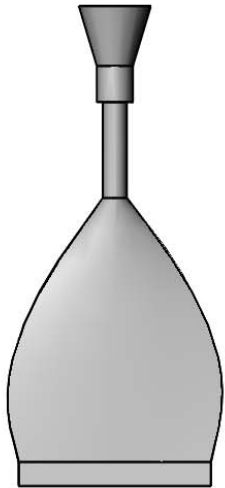




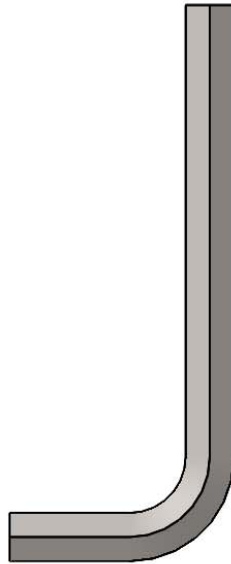
**Architect/Engineering Specifications:**

EasyInstall retro-fit kit, stainless steel. Fits all standard T&S stainless steel swivel base faucets

Job Name \_\_\_\_\_  
 Model Specified \_\_\_\_\_ Quantity \_\_\_\_\_  
 Variations Specified \_\_\_\_\_  
 Date \_\_\_\_\_



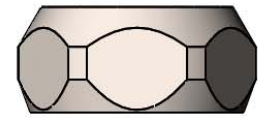
LocTite Capsule



3/8" Hex Key



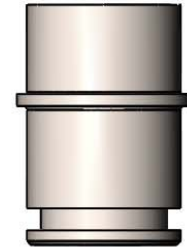
O-Ring



EasyInstall Nut



Lock Washer



EasyInstall Bushing

**Features & Benefits:**

- EasyInstall retro-fit kit
- (1) LocTite capsule
- (1) 3/8" hex key
- (1) lock washer
- (1) O-ring
- (1) EasyInstall nut
- (1) EasyInstall Bushing
- Material: Stainless steel nut & bushing

**Product Compliance:**

- ASME A112.18.1 / CSA B125.1N/A
- NSF 61 - Section 9
- NSF 372 (Low Lead Content)

**Warranty:** One Year (Limited)

**Performance Data:**

- N/A

