



T&S BRASS AND BRONZE WORKS, INC.
 2 Saddleback Cove / P.O. Box 1088
 Travelers Rest, SC 29690

Model No.
S-1210

Item No.

Travelers Rest, SC: 800-476-4103 • Simi Valley, CA: 800-423-0150 • Fax: 864-834-3518 • www.tsbrass.com

EVERSTEEL



ADA Compliant

This Space for Architect/Engineer Approval

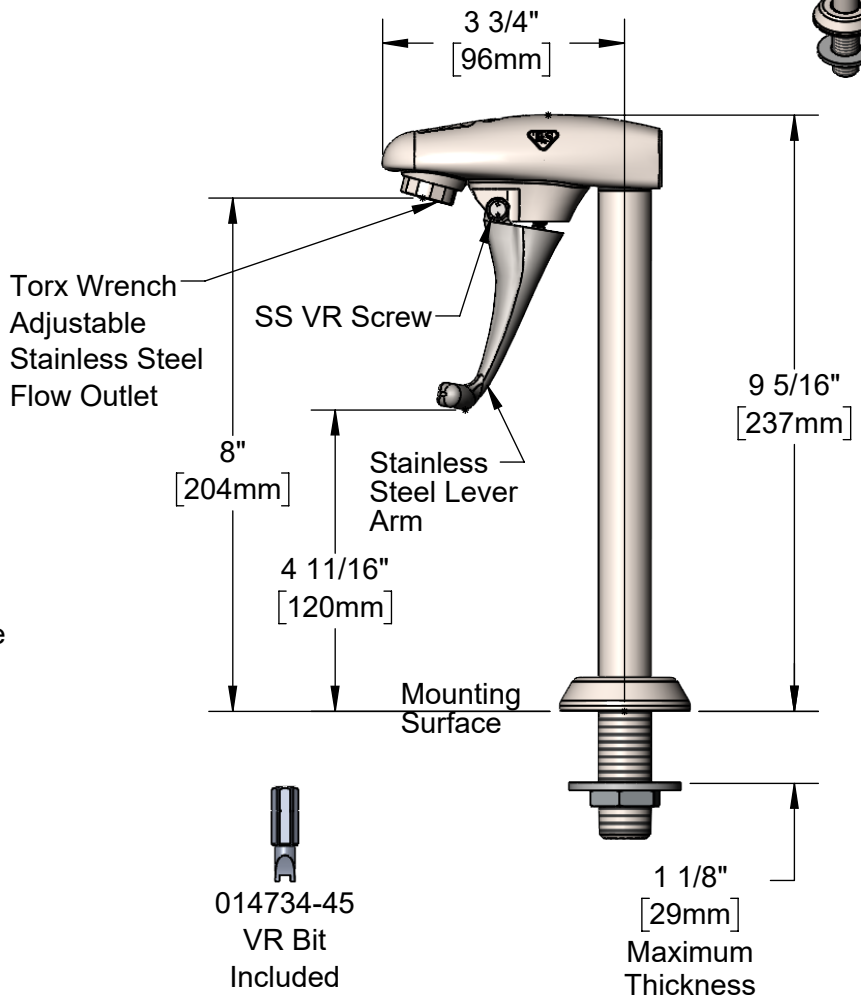
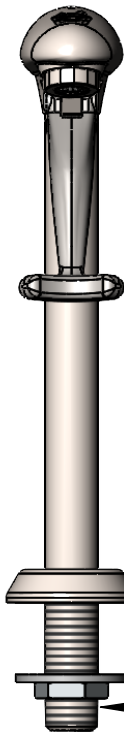
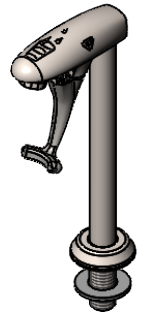
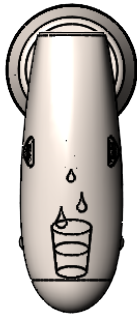
Job Name _____ Date _____

Model Specified _____ Quantity _____

Customer/Wholesaler _____

Contractor _____

Architect/Engineer _____



Ø 2" [51mm] Adjustable Flange

1/2" NPT Male Inlet

Rough-In Requirement:
 Ø 1" [25mm] Mounting Hole

Product Specifications:

8" Deck Mount Pedestal Type Stainless Steel Glass Filler, Push Back Design, Stainless Steel Self-Closing Arm w/ VR Screw, Adjustable Stainless Steel Deck Flange & 1/2" NPT Stainless Steel Male Inlet

Product Compliance:

ASME A112.18.1 / CSA B125.1
 NSF 61 - Section 9
 NSF 372 (Low Lead Content)
 ANSI A117.1 (ADA)

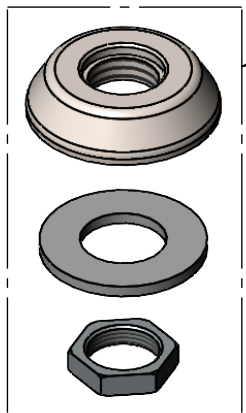
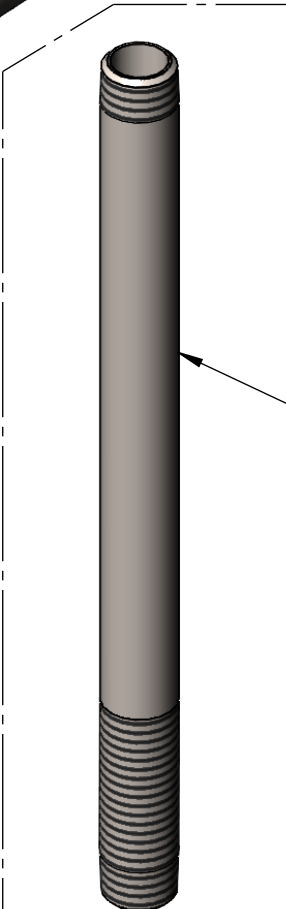
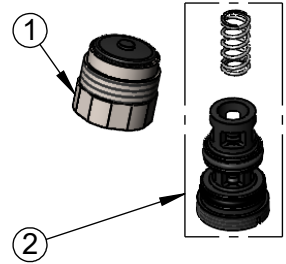
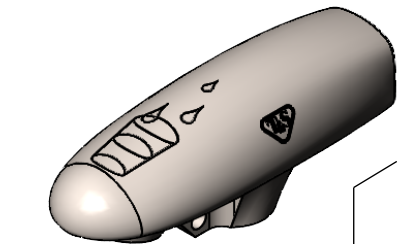


T&S BRASS AND BRONZE WORKS, INC.
 2 Saddleback Cove / P.O. Box 1088
 Travelers Rest, SC 29690

Model No.
S-1210

Item No.

Travelers Rest, SC: 800-476-4103 • Simi Valley, CA: 800-423-0150 • Fax: 864-834-3518 • www.tsbrass.com



ITEM NO.	SALES NO.	DESCRIPTION
1	S015588-30	Adjustable SS Outlet w/ Torx Wrench
2	015589-40	Valve Repair Kit
3	S015550-30	SS Lever Arm Repair Kit w/ VR Screw
4	S016783-30	Adjustable SS Deck Flange Repair Kit
5	S015887-30	Stainless Steel Pedestal
6	S015886-30	SS Pedestal 8" x 1/2" NPT Male Thrd.



Product Specifications:
 8" Deck Mount Pedestal Type Stainless Steel Glass Filler, Push Back Design,
 Stainless Steel Self-Closing Arm w/ VR Screw, Adjustable Stainless Steel
 Deck Flange & 1/2" NPT Stainless Steel Male Inlet

Product Compliance:
 ASME A112.18.1 / CSA B125.1
 NSF 61 - Section 9
 NSF 372 (Low Lead Content)
 ANSI A117.1 (ADA)