



**T&S BRASS AND BRONZE WORKS, INC.**  
 2 Saddleback Cove / P.O. Box 1088  
 Travelers Rest, SC 29690

Model No.  
**B-0677**

Item No.

Travelers Rest, SC: 800-476-4103 • Simi Valley, CA: 800-423-0150 • Fax: 864-834-3518 • www.tsbrass.com

This Space for Architect/Engineer Approval

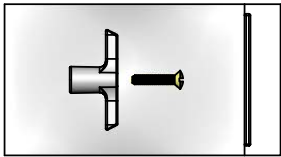
Job Name \_\_\_\_\_ Date \_\_\_\_\_

Model Specified \_\_\_\_\_ Quantity \_\_\_\_\_

Customer/Wholesaler \_\_\_\_\_

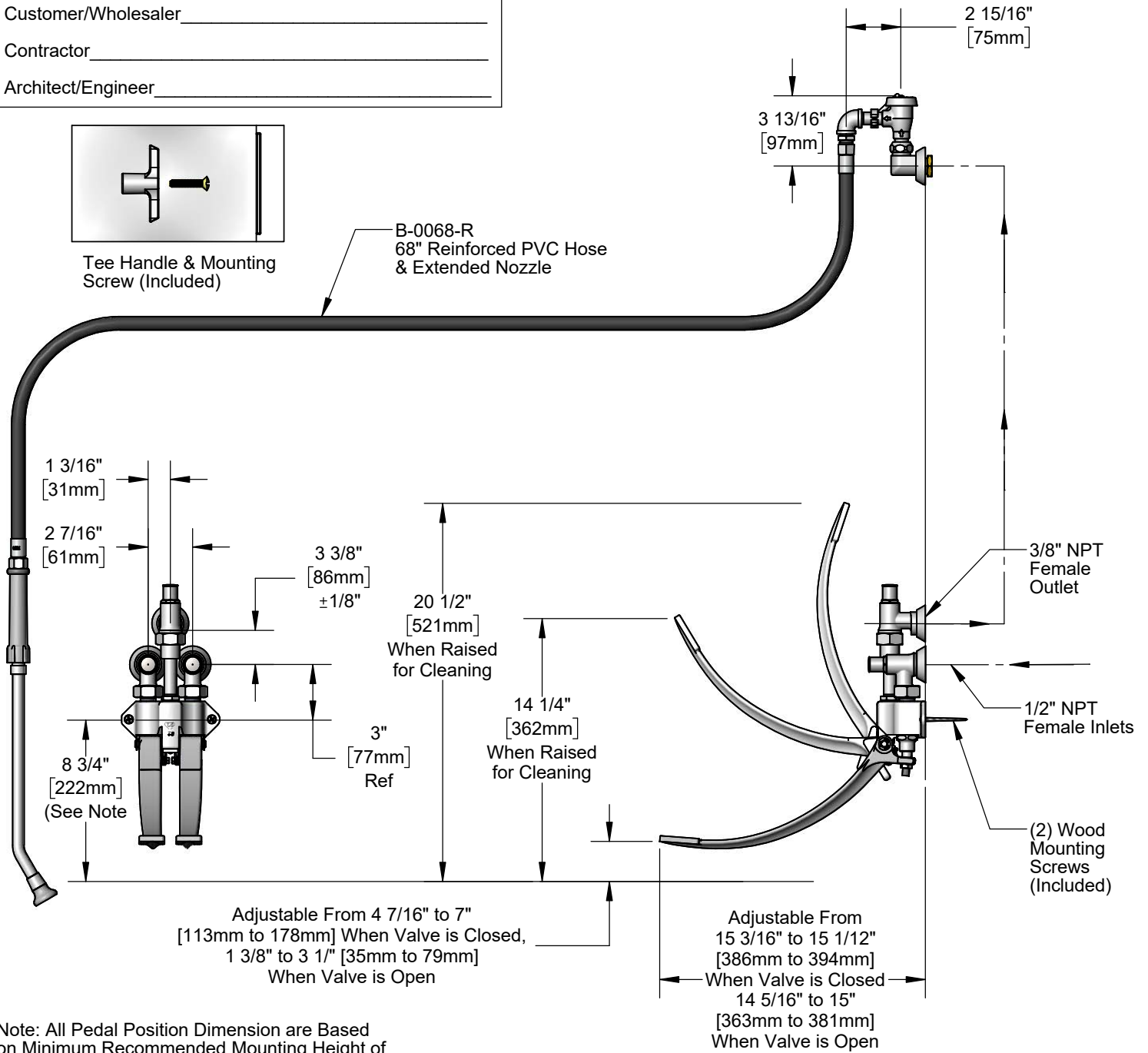
Contractor \_\_\_\_\_

Architect/Engineer \_\_\_\_\_



Tee Handle & Mounting Screw (Included)

B-0068-R  
 68" Reinforced PVC Hose  
 & Extended Nozzle



Note: All Pedal Position Dimension are Based on Minimum Recommended Mounting Height of 8 3/4" [222mm] Above Finished Floors.

Product Specifications:  
**Bedpan Washer, Foot Valve Control, Integral Loose Key Stops, Vacuum Breaker & Extended Nozzle**

Product Compliance:  
 ASME A112.18.1 / CSA B125.1  
 ASSE 1001 (VB)



# T&S BRASS AND BRONZE WORKS, INC.

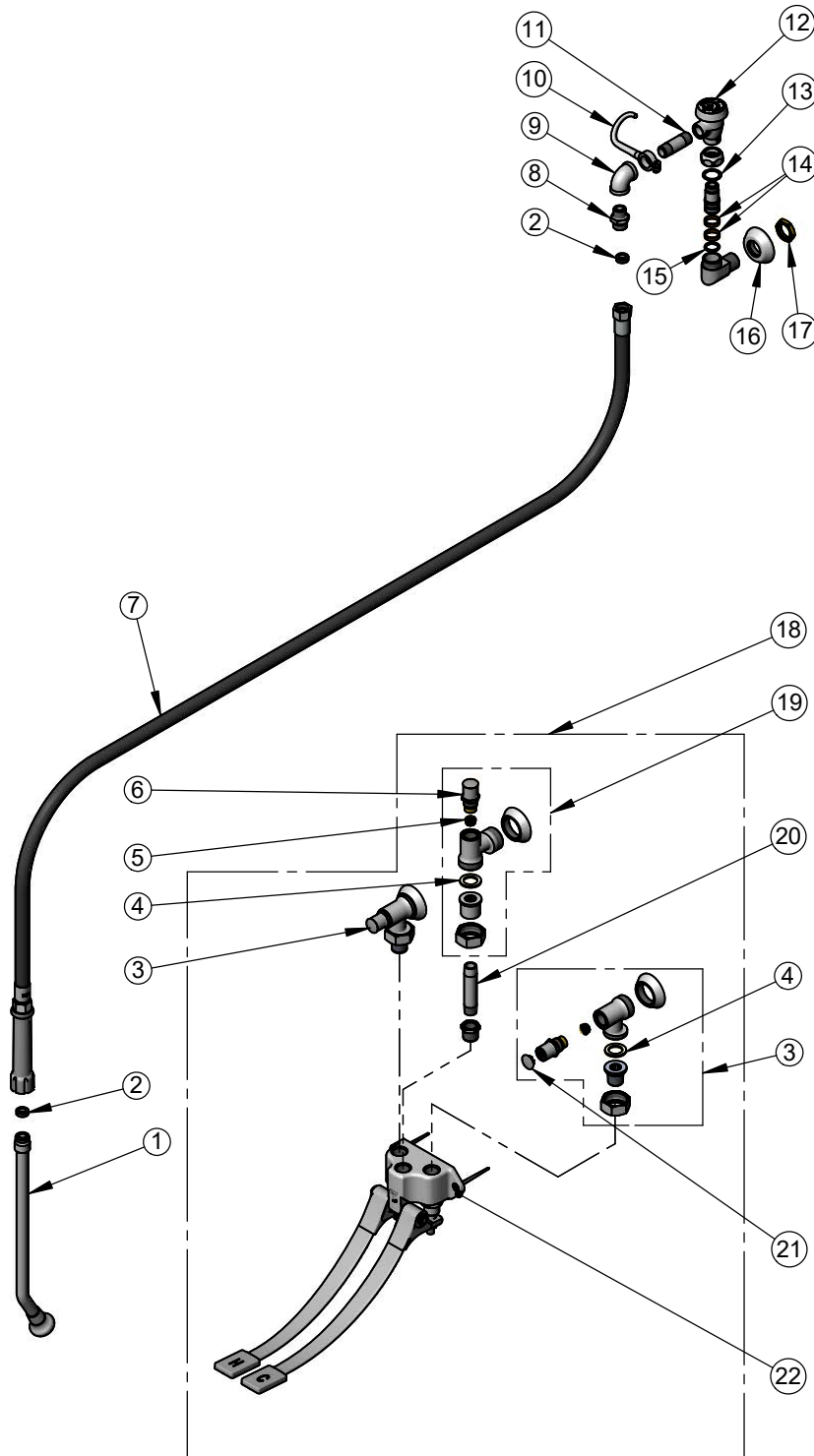
2 Saddleback Cove / P.O. Box 1088  
Travelers Rest, SC 29690

Model No.

**B-0677**

Item No.

Travelers Rest, SC: 800-476-4103 • Simi Valley, CA: 800-423-0150 • Fax: 864-834-3518 • www.tsbrass.com



ITEM NO.	SALES NO.	DESCRIPTION
1	002861-40	Bed Pan Spray Nozzle
2	010476-45	#27 Washer
3	B-1350	Loose Key 1/2" NPT Angle Stop w/ Tee Handle
4	001019-45	Coupling Nut Washer
5	000763-20	Seat
6	166A	Service Stop Spindle w/ Tee Handle & Screw
7	B-0068-R	68" Reinforced PVC Hose
8	053A	Adapter, 3/8" NPT Male
9	001355-40	Elbow, 3/8 NPT
10	004R	Finger Hook
11	000357-40	Nipple, 3/8" NPT x 2"
12	B-0968	3/8" NPT Vacuum Breaker
13	009538-45	Swivel Washer
14	011429-45	Swivel Sleeves (2)
15	001074-45	O-Ring
16	000023-40	Adjustable Wall Flange
17	000713-20	Lock Nut
18	B-0504-01	Wall Mount Double Pedal Valve w/ Angle Stops
19	B-1355	Loose Key 3/8" NPT Angle Stop w/ Tee Handle & Screw
20	010092-40	Nipple, 3/8" NPT x 4 1/4" Long
21	001605-45	Cap
22	B-0504	Wall Mount Double Pedal Valve



002432-45  
T-Handle Screw



001802-45  
T-Handle

**Product Specifications:**

Bedpan Washer, Foot Valve Control, Integral Loose Key Stops, Vacuum Breaker & Extended Nozzle

**Product Compliance:**

ASME A112.18.1 / CSA B125.1  
ASSE 1001 (VB)